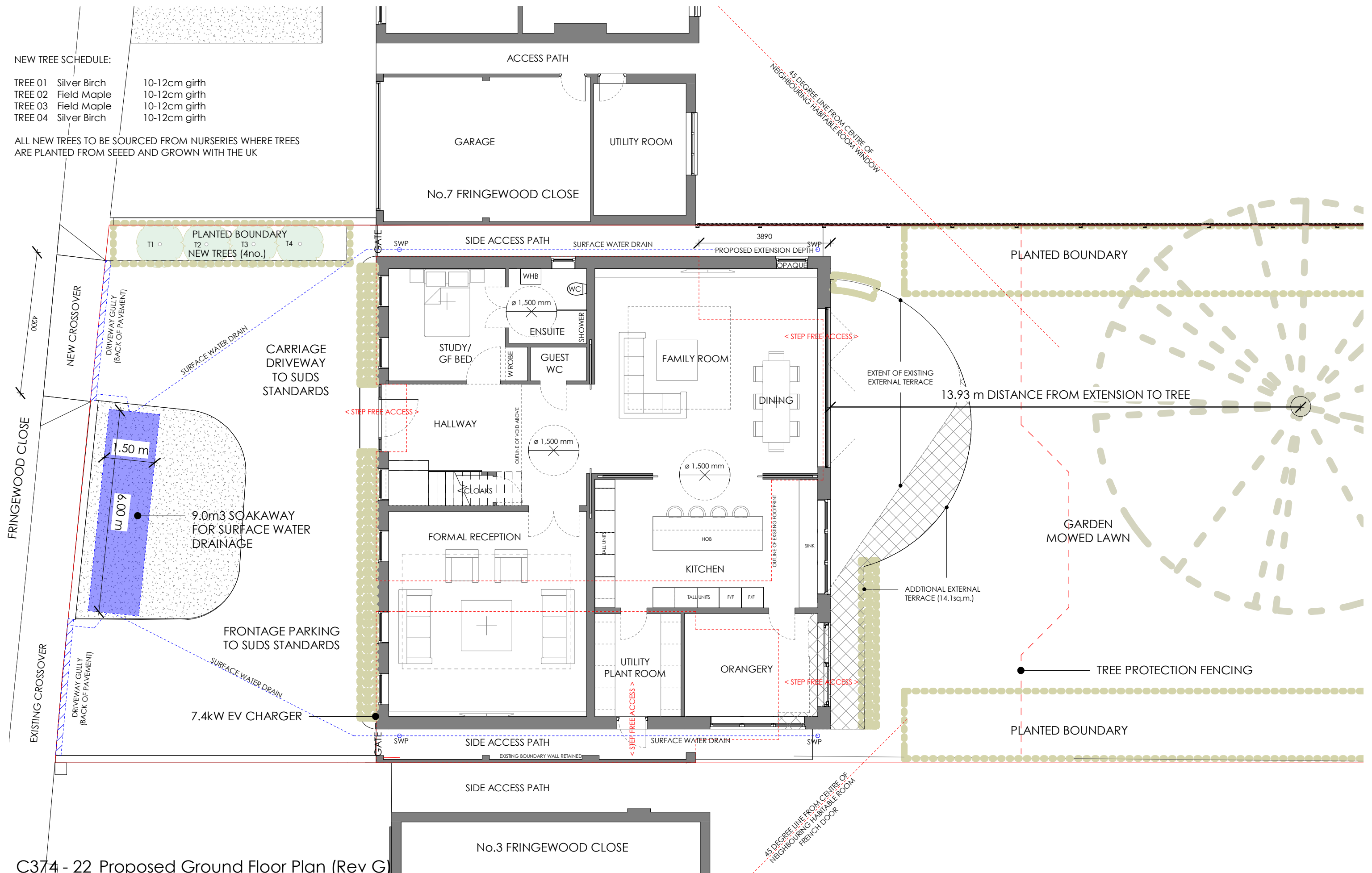


TREE 01	Silver Birch	10-12cm girth
TREE 02	Field Maple	10-12cm girth
TREE 03	Field Maple	10-12cm girth
TREE 04	Silver Birch	10-12cm girth

ALL NEW TREES TO BE SOURCED FROM NURSERIES WHERE TREES
ARE PLANTED FROM SEED AND GROWN WITH THE UK



C374 - 22 Proposed Ground Floor Plan (Rev G)

ALL RIGHTS DESCRIBED IN CHAPTER IV OF THE COPYRIGHT, DESIGNS AND PATENTS ACT 1988 HAVE GENERALLY BEEN ASSERTED.

REV	DATE	NOTE
Rev B	30 JULY '24	HOUSEHOLDER APPLICATION SUBMISSION (REVISED)
Rev C	23 SEPT '24	AS REQUESTED BY LPA (EMAIL 15 SEPT '24) FIRST FLOOR EXTENSION SET BACK TO 2.0m. SIDE ROOF SET DOWN INCREASED TO 600mm.
Rev D	15 NOV '24	VARIATION TO APPLICATION REFERENCE 76184/APP/2024/2039
Rev E	09 APR '25	FULL APPLICATION SUBMISSION
Rev F	19 MAY '25	EV CHARGING LOCATION ADDED
Rev G	01 JUN '25	4No. NEW TREES ADDED & SOAKAWAY ADDED TO FRONTAGE

A step function graph showing a signal over a 5.0m distance. The signal is 0.5 from 0 to 1.0m, 1.5 from 1.0 to 2.0m, 2.5 from 2.0 to 3.0m, 3.5 from 3.0 to 4.0m, and 4.5 from 4.0 to 5.0m.

TEN POINT FIVE architecture 184 WHITTINGTON WAY, PINNER, HA5 5JY T: 020 8429 9206 E: MAIL@TENPOINTFIVE.CO.UK

