

HARMAN HOUSE, UXBRIDGE
SIGNAGE APPLICATION, JULY 2022

&

P

S

S P R A T L E Y
& P A R T N E R S

HARMAN HOUSE, UXBRIDGE
SIGNAGE APPLICATION
JULY 2022

CONTENTS

| | | |
|-----|--|----|
| 1.0 | INTRODUCTION | 1 |
| 2.0 | EXISTING SIGN LOCATIONS | 2 |
| 3.0 | EXISTING SIGNAGE PHOTOS | 3 |
| 4.0 | PROPOSED SIGN - FREESTANDING SIGN, YORK ROAD | 6 |
| 4.1 | PROPOSED SIGN - TOTEM, YORK ROAD | 7 |
| 4.2 | PROPOSED SIGN - FREESTANDING SIGN, GEORGE ST | 8 |
| 4.3 | PROPOSED SIGN - WALL MOUNTED SIGN | 9 |
| 5.0 | PROPOSED SIGN - MAIN ENTRANCE | 10 |



Figure 1. Existing Harman House Main Entrance

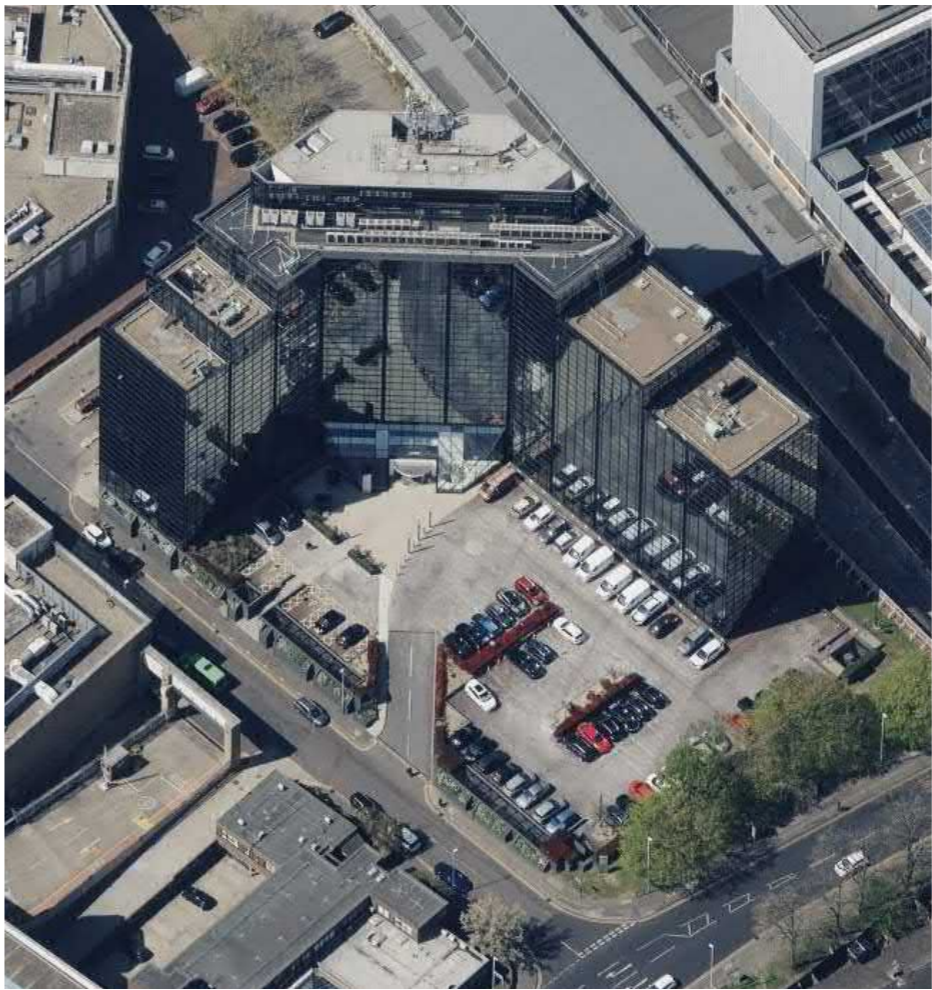


Figure 2. Harman House aerial view of east facade, including car park and main entrance.

This document has been produced by Spratley & Partners to illustrate the initial concept proposals for the refurbishment of the Harman House, Uxbridge office building signage.

The works include the refurbishment of existing signage, removal of signage and proposes new, signage above the main entrance. Each of these changes will help to modernise the way that the Harman House site looks and will improve wayfinding for occupants and visitors.

All the images in this document are based on initial appraisals and are subject to full detailed design.

EXISTING SIGNAGE KEY

- 1 Harman House sign, York Road
- 2 Harman House totem, York Road
- 3 Harman House George St sign
- 4 Harman House George St wall mounted sign / branding
- 5 Harman House main entrance
- 6 Existing totem beside main entrance

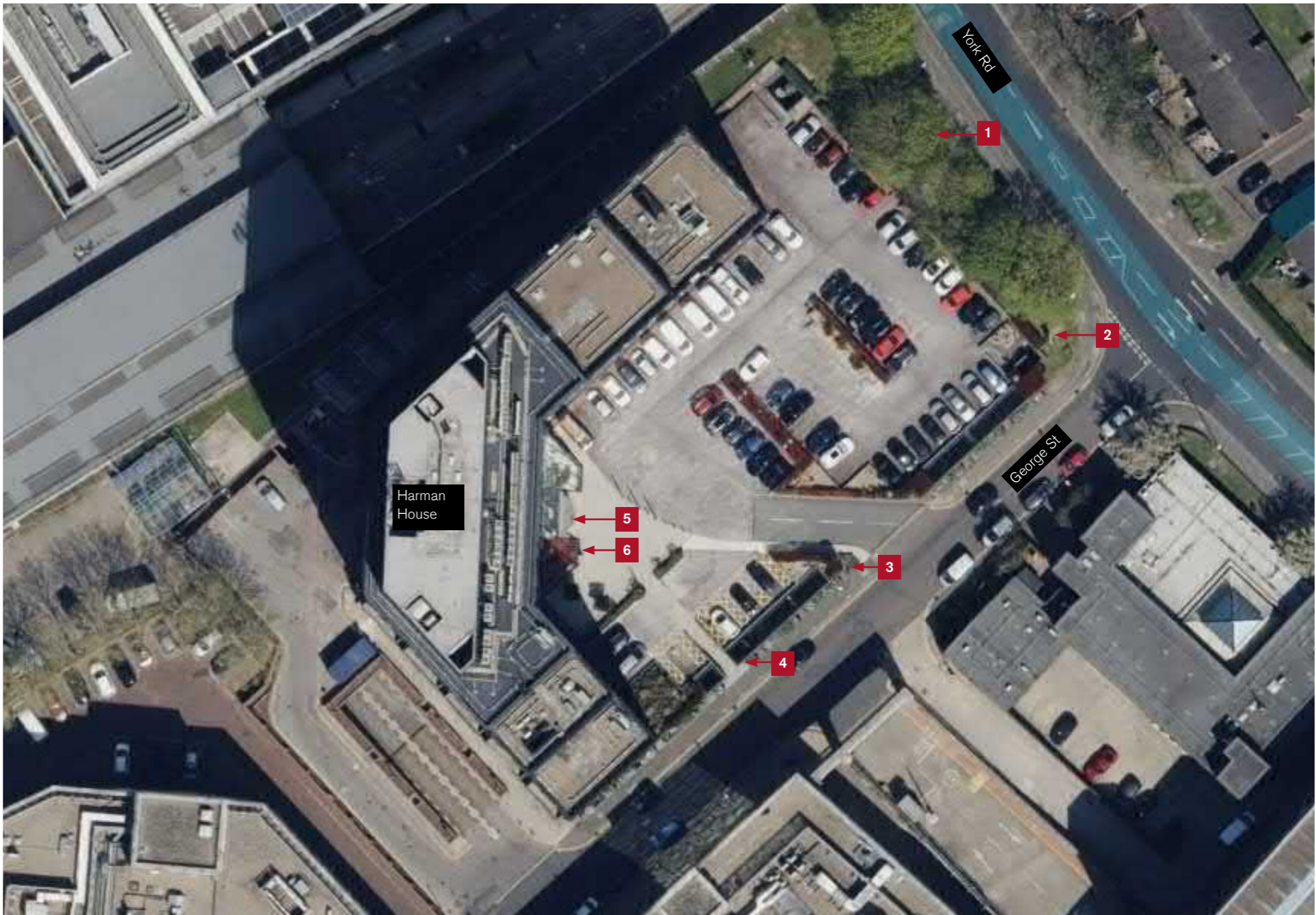


Figure 3. Harman House Satellite View

EXISTING SIGNAGE KEY

- 1 Existing Harman House sign, beside the pedestrian access to the site from York Road. Has a grey PPC finish with black vinyl lettering to both sides.
- 2 Existing Harman House totem at the corner of York Road and George Street. Has a stainless steel finish, with white backlit Harman House logo, "Harman House" text and slim border.



Existing Harman House sign, York Road



Existing Harman House sign, York Road (close up)



Existing Harman House totem, York Road



Existing Harman House totem, York Road (close up)

EXISTING SIGNAGE PHOTOS

EXISTING SIGNAGE KEY

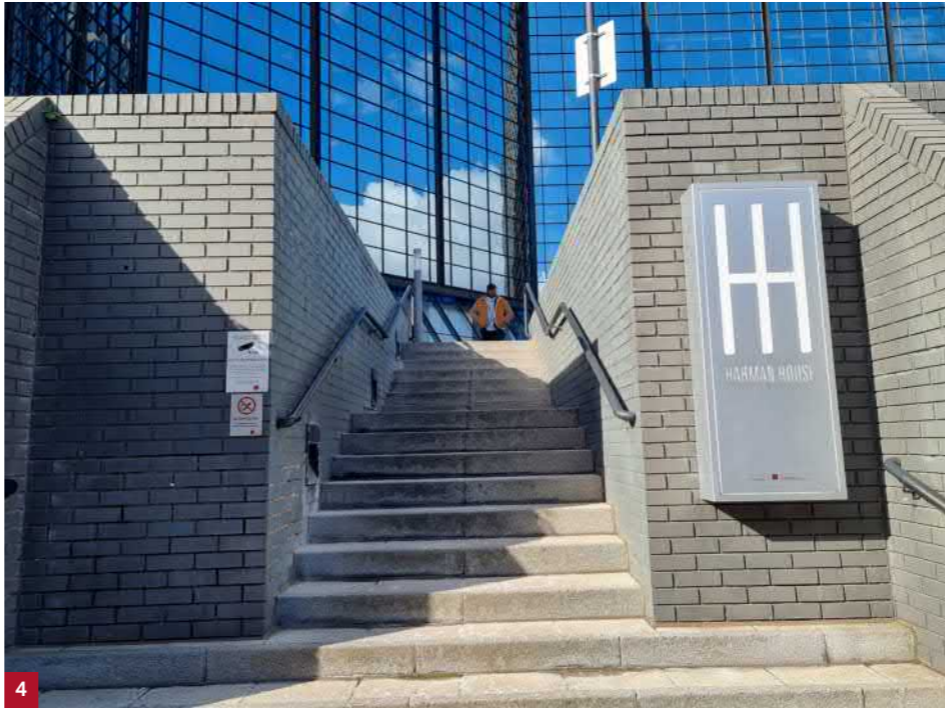
- 3 Existing Harman House sign, beside the pedestrian and vehicle access to the site from George St. Has a grey PPC finish with black vinyl lettering.
- 4 Existing Harman House wall mounted sign at the beside the pedestrian access from George Street. Has a stainless steel finish, with white backlit Harman House logo, "Harman House" text and slim border.



Existing George St sign



Existing George St sign (close up)



Existing George St wall mounted sign / branding



Existing George St wall mounted sign / branding (close up)

EXISTING SIGNAGE PHOTOS

EXISTING SIGNAGE KEY

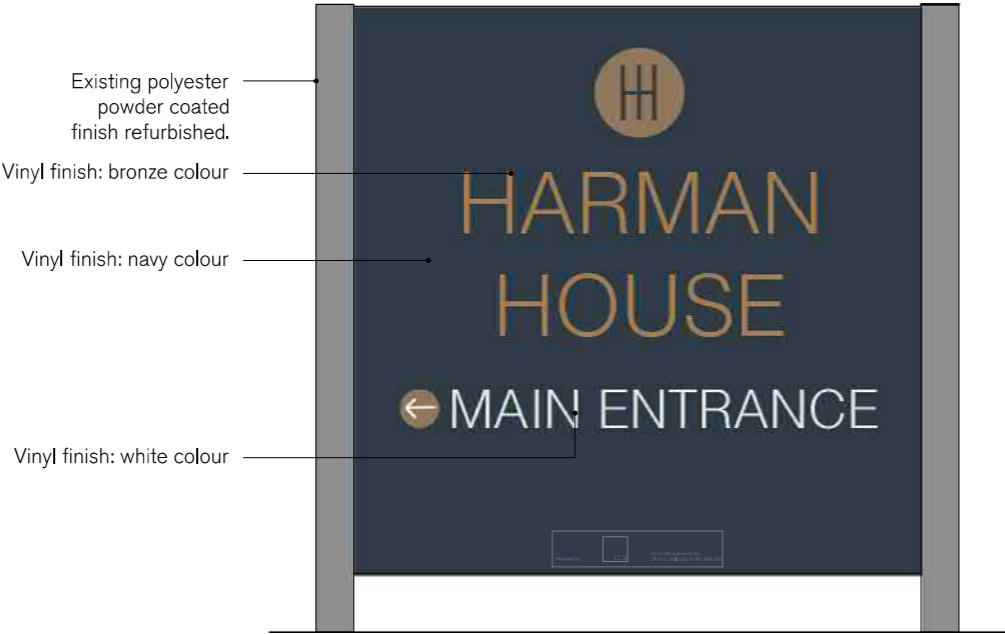
- 5 Harman House main entrance
- 6 Existing totem beside main entrance. Has a stainless steel finish, with white backlit Harman House logo, "Harman House" text and slim border.



Existing totem beside Harman House main entrance.



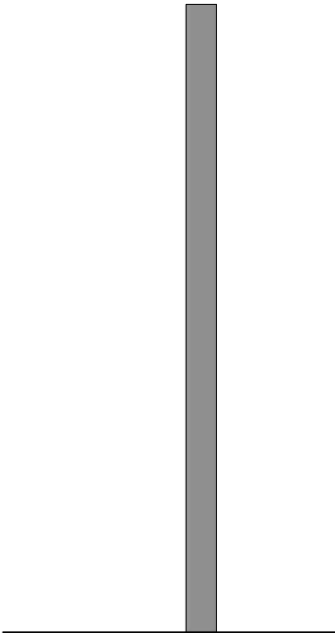
Existing Harman House main entrance.



Proposed Front Elevation



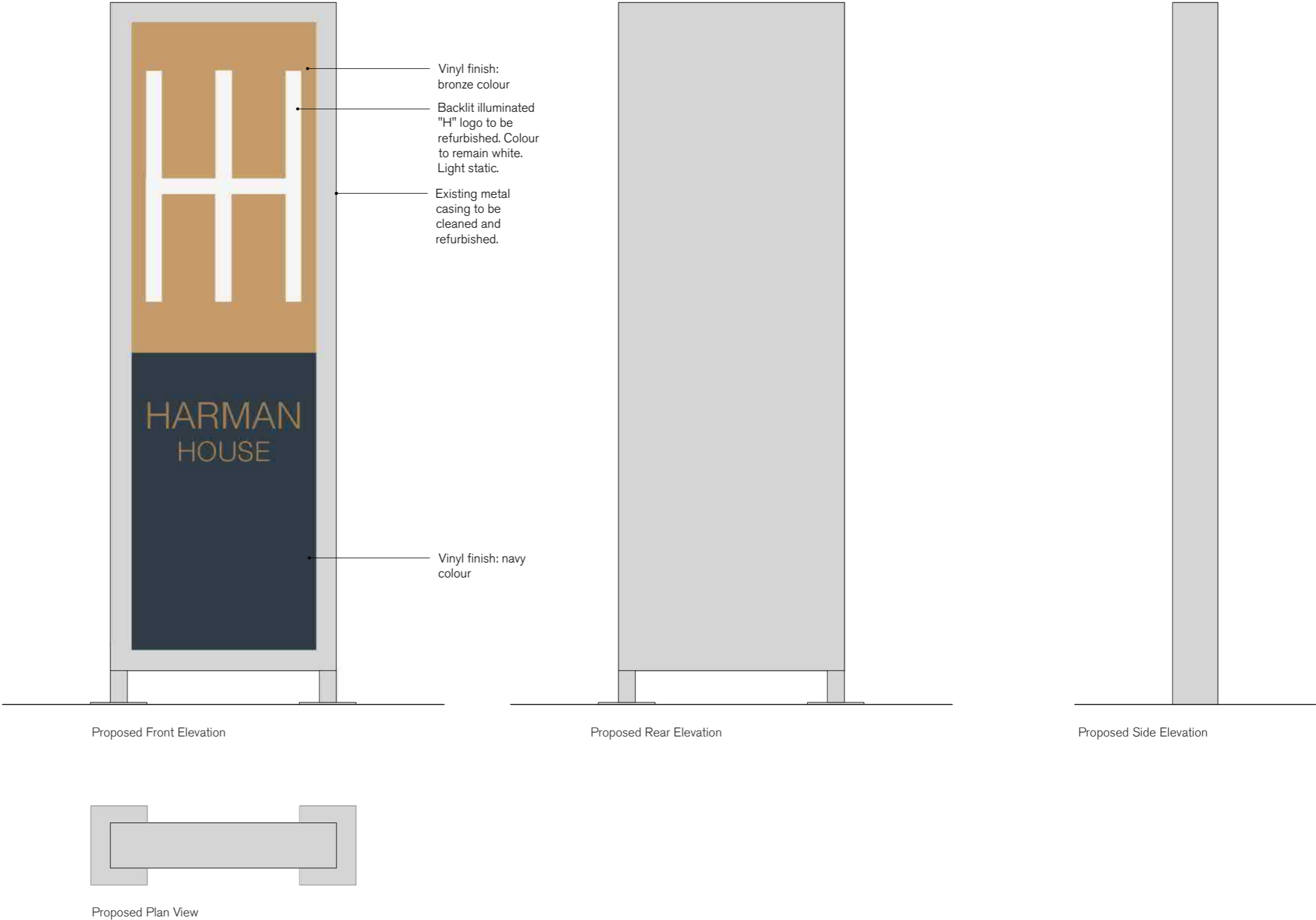
Proposed Rear Elevation



Proposed Side Elevation

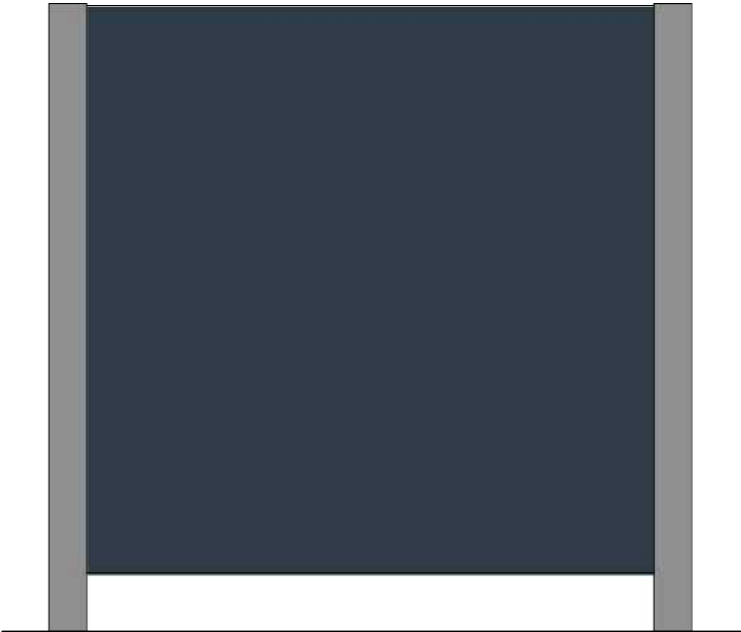


Proposed Plan View

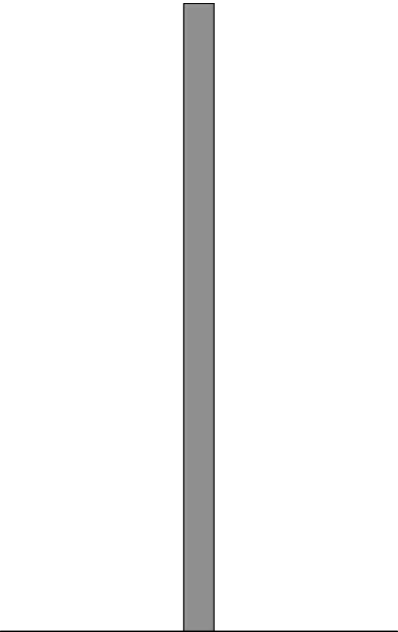




Proposed Front Elevation



Proposed Rear Elevation

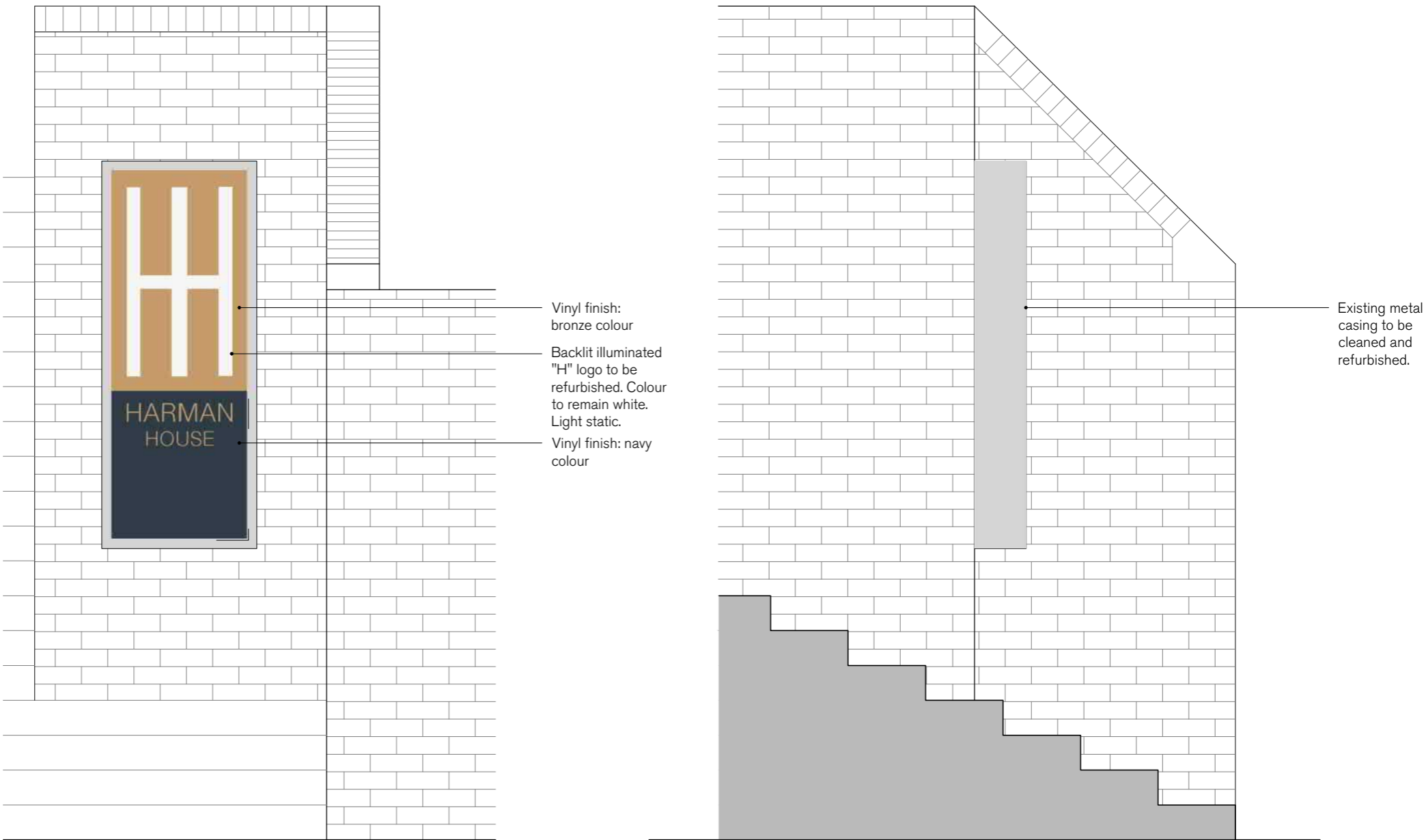


Proposed Side Elevation



Proposed Plan View

PROPOSED SIGN 4 - WALL MOUNTED SIGN



Proposed Front Elevation

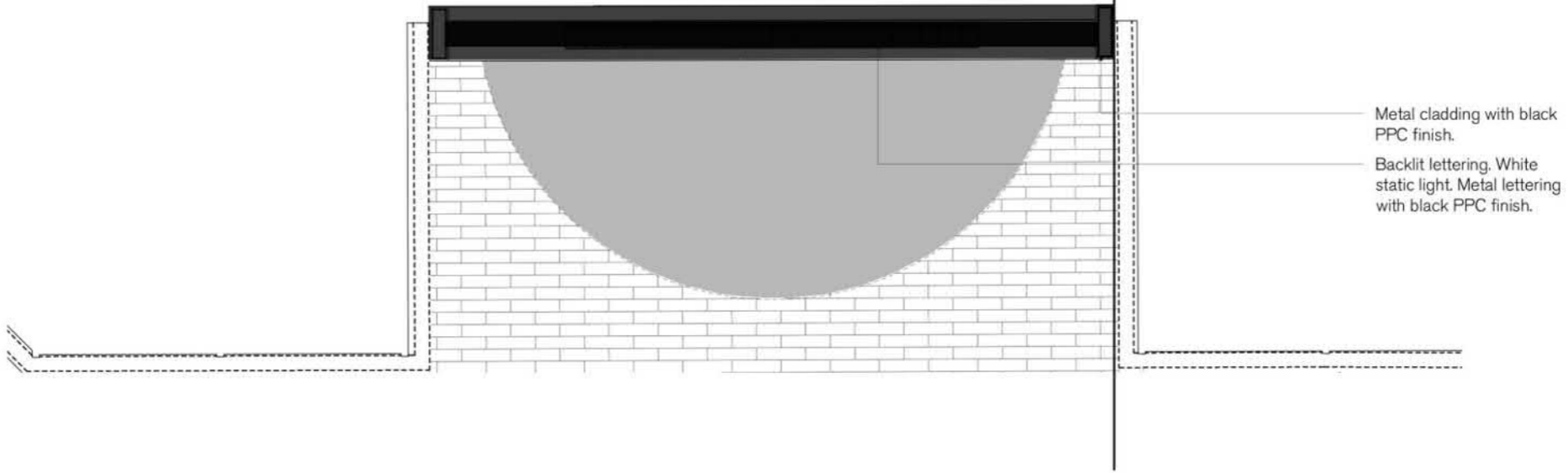
Proposed Side Elevation

Proposed Plan View

PROPOSED SIGN 5 - MAIN ENTRANCE



Proposed Main Entrance Elevation (Totem Removed)



Proposed Main Entrance Plan

S P R A T L E Y
& P A R T N E R S