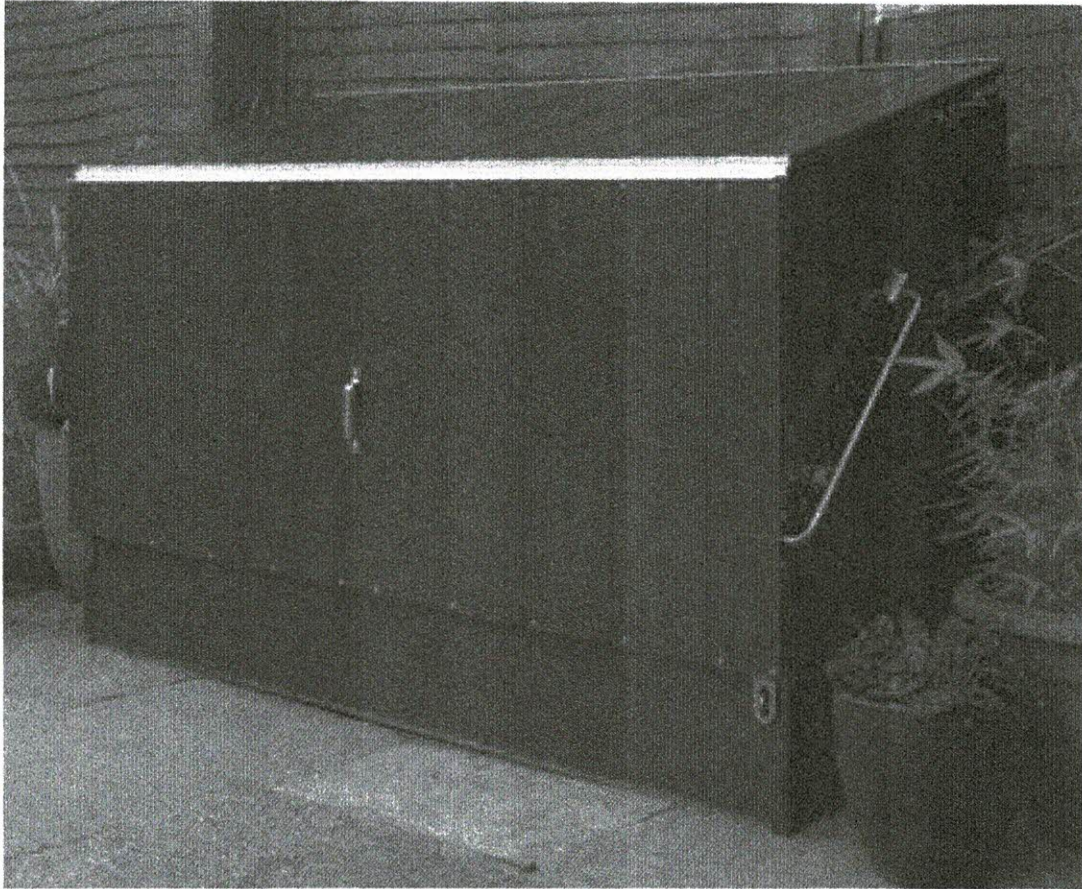


Cycle Storage

<https://www.robertdyas.co.uk/trimetals-protect-a-cycle-anthracite>



SKETCH 1

Specifications

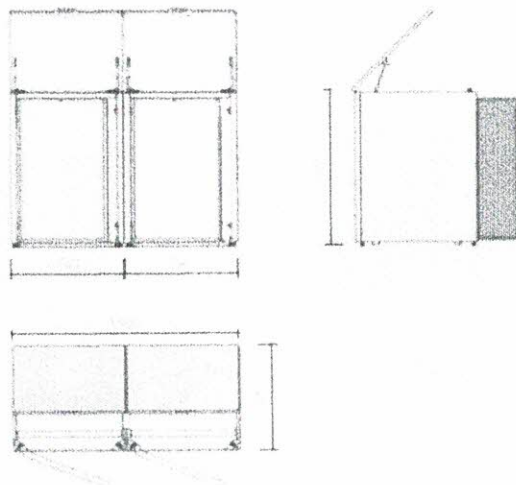
- Tested and certified by the loss prevention certification board (awarded the lps1175 security rating 1)
- Secured by design approved - police preferred specification
- Padlocks, ground anchor and security chain included
- Integral metal base included complete with fixings for securing to concrete
- Pvc coated galvanised panels - 25 year guarantee
- Supplied in anthracite grey
- The first and only metal sheds and storage endorsed by the rhs (royal horticultural society)
- Colour: Anthracite
- Dimensions: H133 x W196 x D90cm

Refuse Storage

<https://ctybox.co.uk/collections/loft/products/hatch-steel?variant=40895443533986>



Double Bin Store



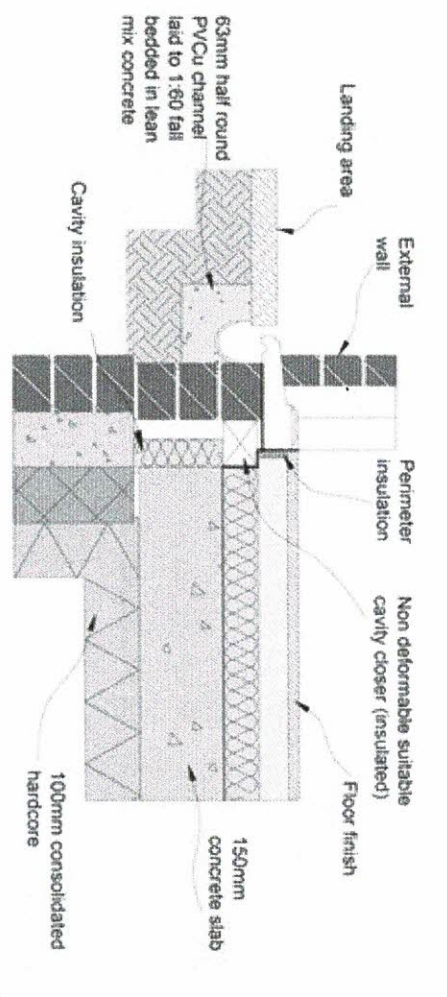
Specifications

- Made of high quality powder-coated galvanised steel and stainless steel hardware, CTYBOX bin stores are built to last
- Lift up lids with gas struts assisted support
- Hard ground anchor kit and stainless steel chain are included

SKETCH 2

External Landing and Drainage

Objective: Ensure external landing is large and level enough for easy access for wheelchair users and ambulant people, whilst avoiding standing water and limiting the amount of surface water reaching the threshold.



Process

1. Install an external landing with a fall ratio of between 1:40 and 1:60.
2. Ensure water falls away from the doorway in a single direction and make sure there are no cross falls.
3. Build a drainage channel between the landing and the threshold.

SKETCH 3