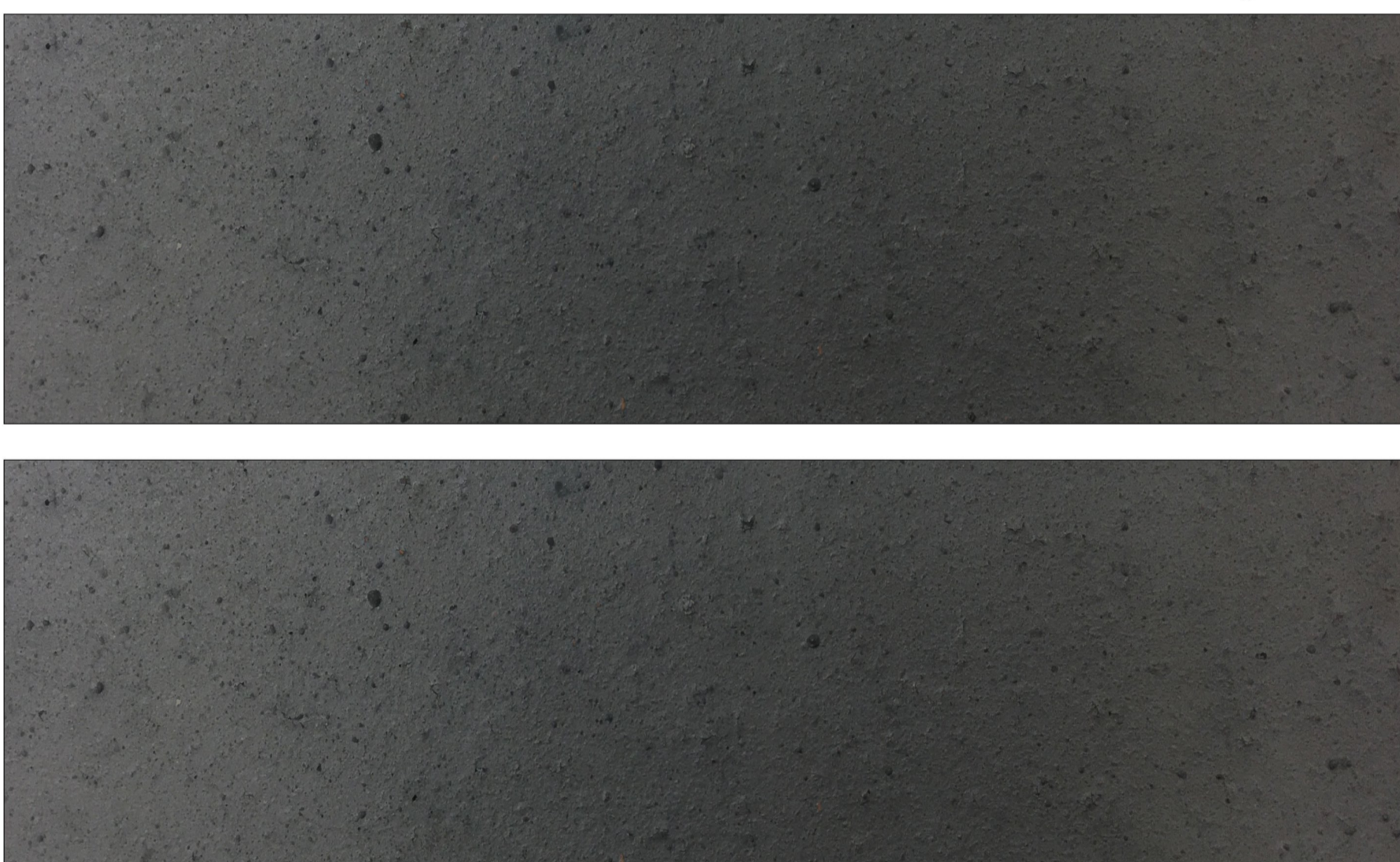




2. TIMBER
Accoya or similar modified softwood naturally weathered to silver grey colour



6. GREEN ROOF
Intensive Green Roof with deep growing substrate and biodiverse planting of grasses, herbaceous and shrub planting.



1. BRICK
Engineering brick for walls, retaining walls and pavements in dark grey or similar



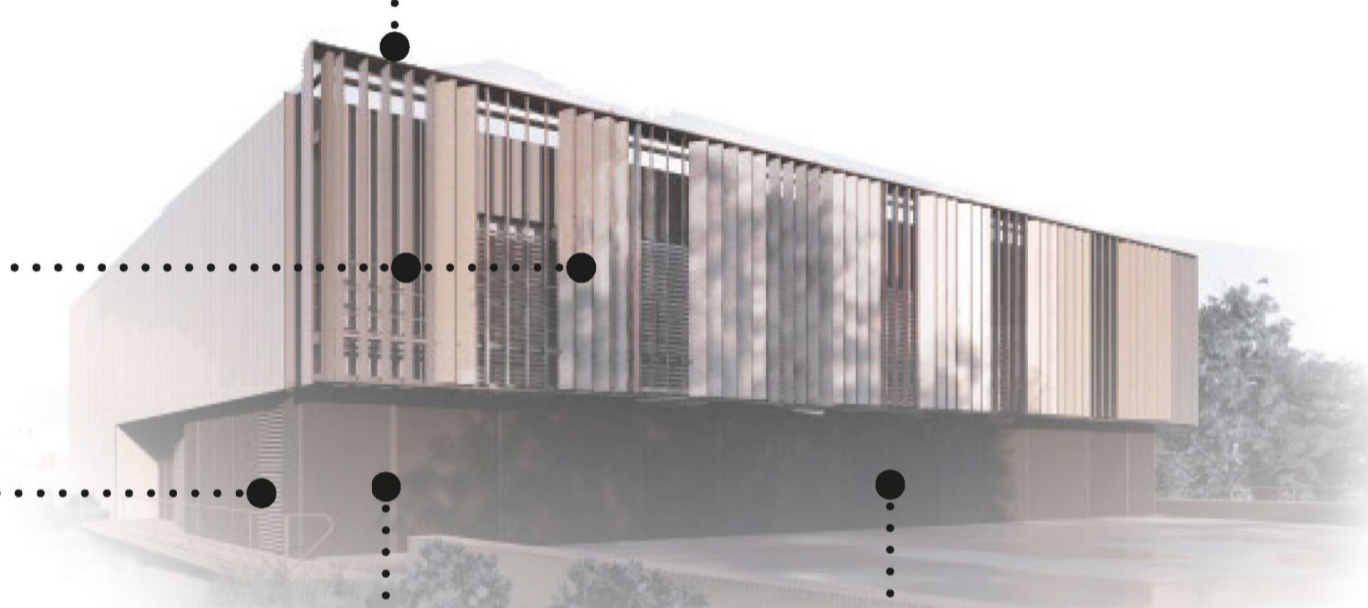
5. GLASS
Over door glazing, semi-obscured in metal frame




4. STAINLESS STEEL
Kick plates, handles and special panels in brushed finish



3. METAL
Steel cladding panels, doors and louver panels polyester powder coated dark grey



NOT FOR CONSTRUCTION

					<p>HS2 accepts no responsibility for any circumstances which arise from the reproduction of this document after alteration, amendment or abbreviation or if it is issued in part or issued incompletely in any way.</p> <p>© Crown Copyright and database right 2018. All rights reserved. Ordnance Survey Licence number 100049190</p> <p>© Crown Copyright material is reproduced with the permission of Land Registry under delegated authority from the Controller of HMSO. This material was last updated on 2018 and may not be copied, distributed, sold or published without the formal permission of Land Registry. Only an official copy of a title plan or register obtained from the Land Registry may be used for legal or other official purposes.</p>					<p>Legends/Notes:</p> <ol style="list-style-type: none"> All dimensions are in metres unless noted otherwise. All levels are in metres relative to OD (Ordnance Datum, Newlyn) unless noted otherwise. Chainages are expressed in metres and measured from Euston Station. Global coordinates are indicated by Eastings (E) and Northings (N) to the project snake grid. All angles are in degrees (0°-360°) unless noted otherwise. Dimensions are not to be scaled from the drawing. For the scope of works by the rail systems contractor, as indicatively shown on the drawings, refer to WI 100 Elevational views are for illustration purposes only. Refer to architectural elevations and model for technical information. Material samples are provided for information and will be as shown or similar approved. 					 <p>Registered in England Registration No. 06791686 Registered office: 2 Snow Hill, Queensway, Birmingham, B4 6GA</p> <p>OFFICIAL</p> <p>Creator/Originator SCS JV - Design House</p>					<p>Zone West Ruislip Portal</p> <p>Design Stage Detailed Design</p> <p>Drawing Title West Ruislip Portal Schedule 17 Plans and Specifications Material Board For Approval</p>			<p>Project/Contract HS2-MWCC SCS Sector S2</p> <p>Discipline/Function Architectural</p> <p>Drawn D.Koroni</p> <p>Checked V.De Siqueira</p> <p>Approved M.Gaby</p> <p>Date 20/12/19</p> <p>Scale NTS</p> <p>Size A1</p> <p>Drawing No. 1MC04-SCJ_SDH-AR-DPH-SS05_SL07-484211</p> <p>Rev. C01</p>		
Rev	Description	Drawn	Checked	Con App	HS2 App	Scale with caution as distortion can occur.																			