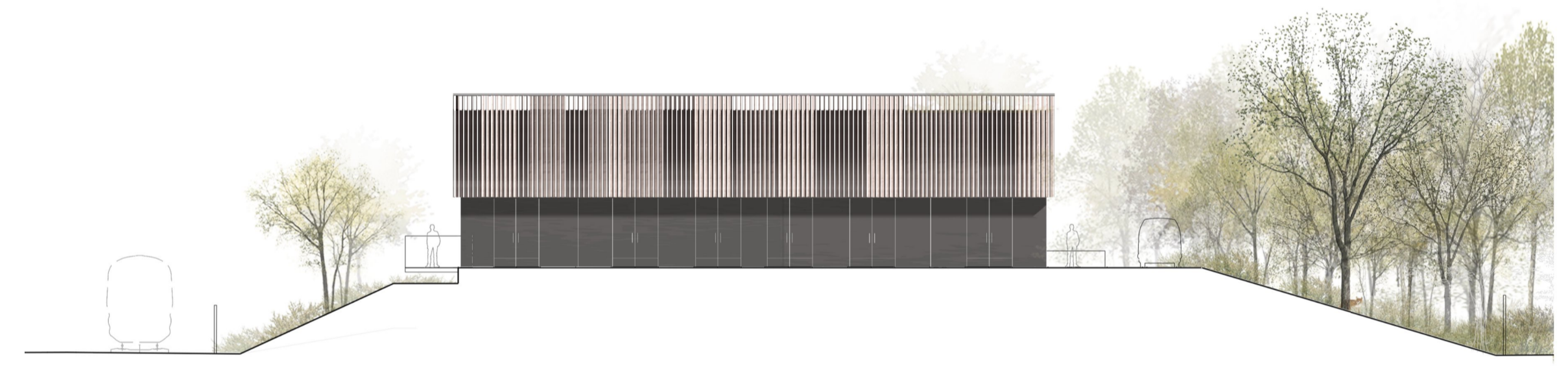
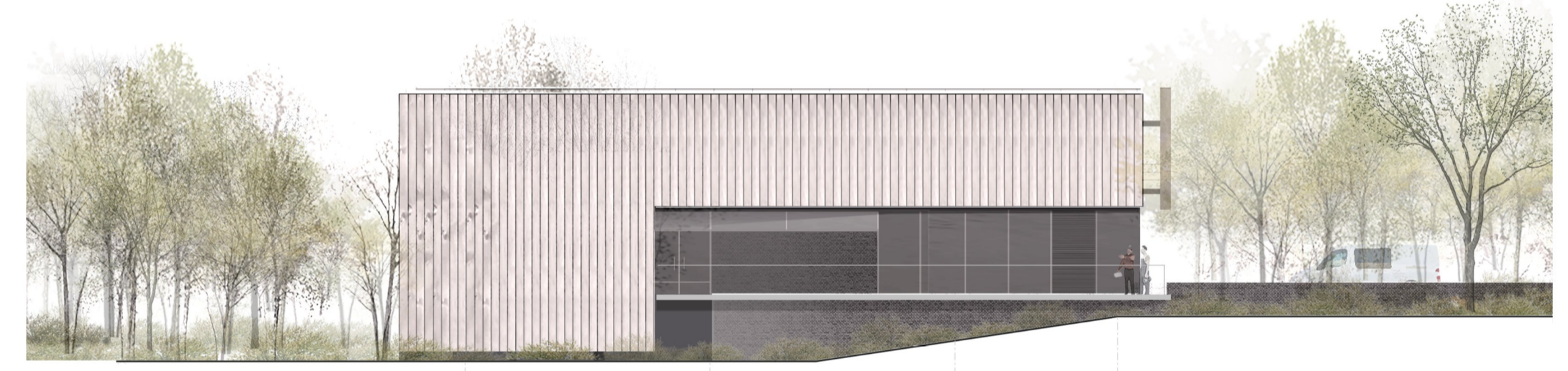


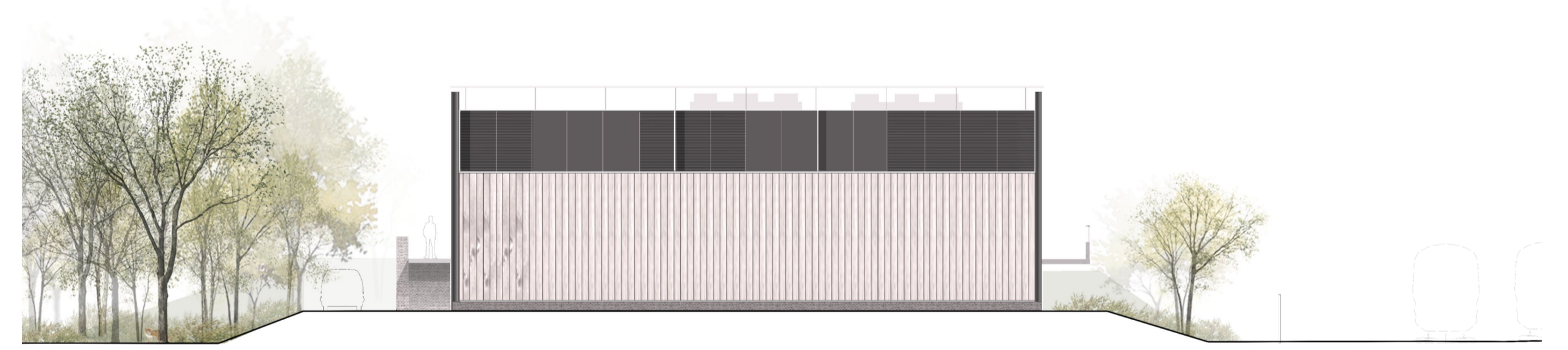
1 Headhouse and Portal South Elevation from Network Rail Corridor
 NTS



2 Headhouse East Elevation from hardstanding and main access
 NTS



3 Headhouse South Elevation from Network Rail corridor
 NTS



4 Headhouse West Elevation from Portal
 NTS



5 Headhouse North Elevation from Golf Course area
 NTS

NOT FOR CONSTRUCTION

<p>HS2 accepts no responsibility for any circumstances which arise from the reproduction of this document after alteration, amendment or abbreviation or if it is issued in part or issued incompletely in any way.</p> <p>© Crown Copyright and database right 2018. All rights reserved. Ordnance Survey Licence number 100049190</p> <p>© Crown Copyright material is reproduced with the permission of Land Registry under delegated authority from the Controller of HMSO. This material was last updated on 2018 and may not be copied, distributed, sold or published without the formal permission of Land Registry. Only an official copy of a title plan or register obtained from the Land Registry may be used for legal or other official purposes.</p>					<p>Legends/Notes:</p> <ol style="list-style-type: none"> All dimensions are in metres unless noted otherwise. All levels are in metres relative to OD (Ordnance Datum, Newlyn) unless noted otherwise. Chainages are expressed in metres and measured from Euston Station. Global coordinates are indicated by Eastings (E) and Northings (N) to the project snake grid. All angles are in degrees (0° 360°) unless noted otherwise. Dimensions are not to be scaled from the drawing. For the scope of works by the rail systems contractor, as indicatively shown on the drawings, refer to WI 100 Elevational views are for illustration purposes only. Refer to architectural elevations and model for technical information. Security screen not shown Trees and embankments are indicative. Height is indicative and illustrated as per a 15 year-old tree. Refer to landscape drawings. 					<p>11. Work No. 1/62 (footpath diversion and associated works subject to separate requests for approval) not shown as part of this application.</p>					<p>Registered in England Registration No. 06791686 Registered office: 2 Snow Hill, Queensway, Birmingham, B4 6GA</p> <p>OFFICIAL</p> <p>Creator/Oriinator SCS JV - Design House</p>			<p>Zone: West Ruislip Portal</p> <p>Design Stage: Detailed Design</p> <p>Drawing Title: West Ruislip Portal Schedule 17 Plans and Specifications Illustrated Elevations For Information</p>			<p>Project/Contract: HS2-MWCC SCS Sector S2</p> <p>Discipline/Function: Architectural</p> <p>Drawn: D.Koroni Checked: V.De Siqueira Approved: M.Gaby</p> <p>Date: 20/12/19 Scale: N/A Size: A1</p> <p>Drawing No.: 1MC04-SCJ_SDH-AR-DPH-SS05_SL07-483212 Rev: C01</p>		
Rev	Description	Drawn	Checked	Con App	HS2 App	Scale with caution as distortion can occur.																	