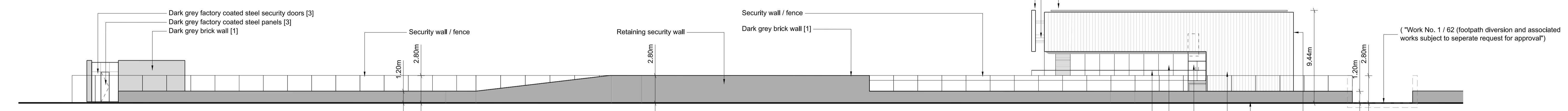
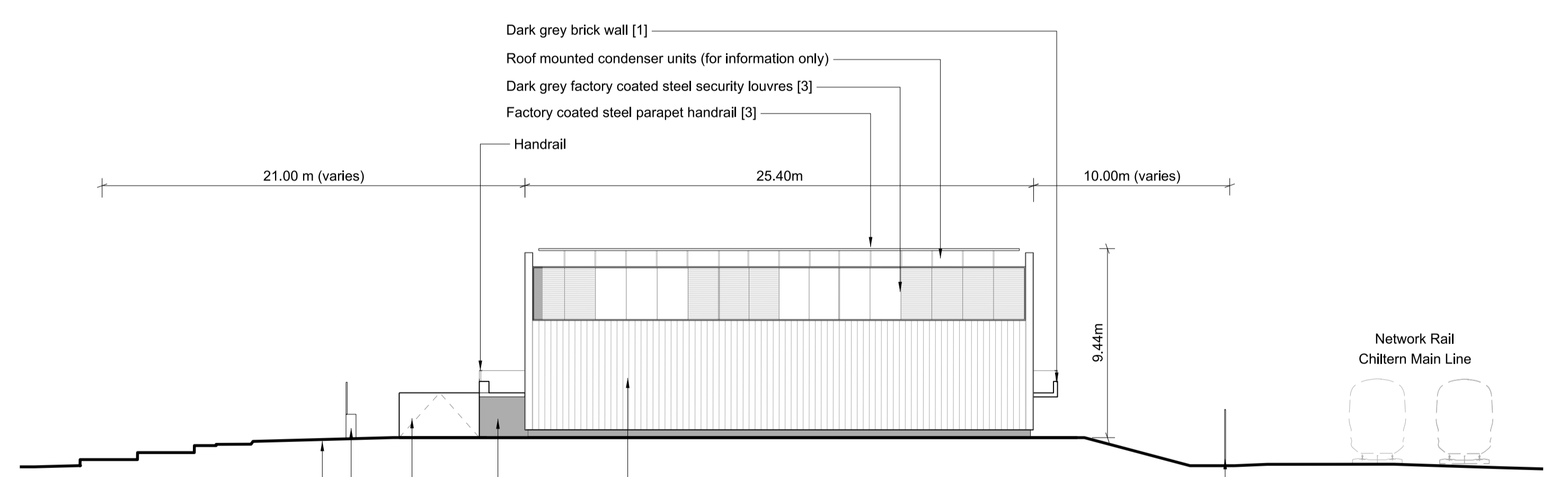


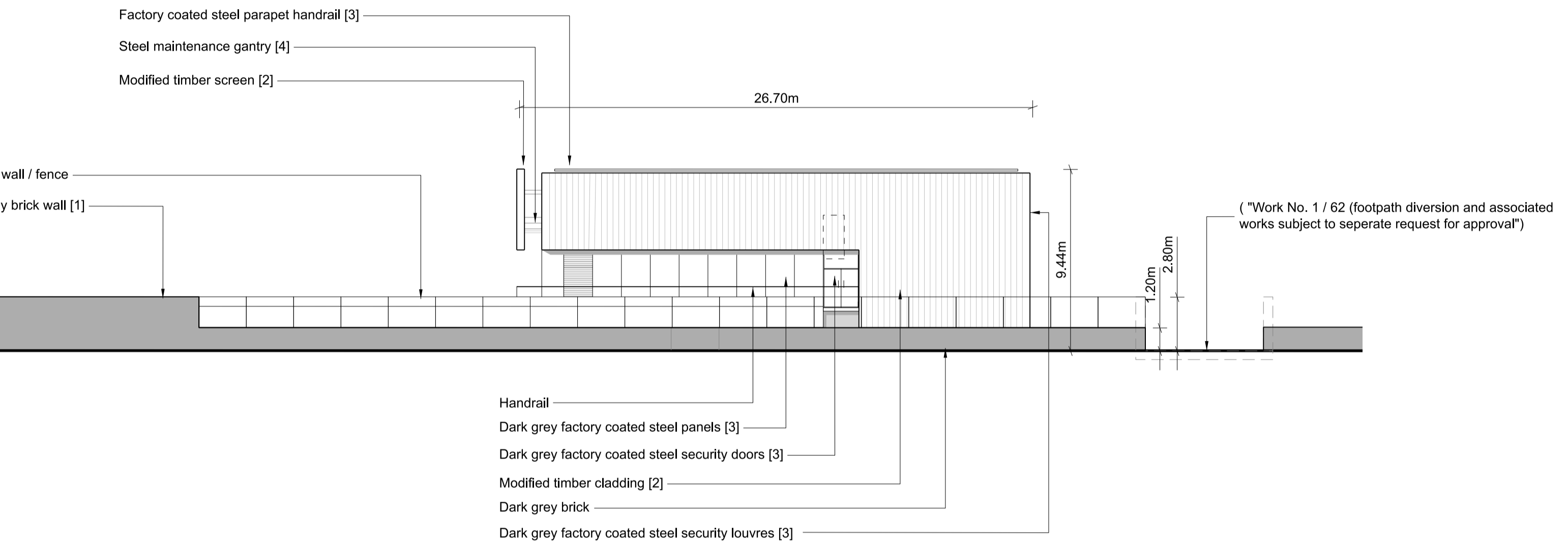
1 East Elevation
1:200



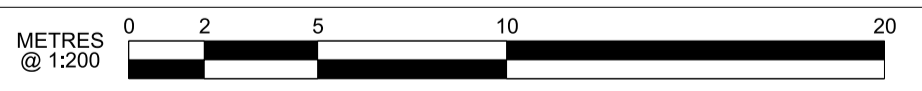
2 North Elevation 2
1:200



3 West Elevation 3
1:200



4 South Elevation 4
1:200



NOT FOR CONSTRUCTION

HS2 accepts no responsibility for any circumstances which arise from the reproduction of this document after alteration, amendment or abbreviation or if it is issued in part or issued incompletely in any way. © Crown Copyright and database right 2018. All rights reserved. Ordnance Survey Licence number 100049190 © Crown Copyright material is reproduced with the permission of Land Registry under delegated authority from the Controller of HMSO. This material was last updated on 2018 and may not be copied, distributed, sold or published without the formal permission of Land Registry. Only an official copy of a title plan or register obtained from the Land Registry may be used for legal or other official purposes.				
P01	WRAP_Schedule 17 Re-Submission	DK	VD	
C01	WRAP_Schedule 17 Re-Submission	DK	VD	LN
Rev	Description	Drawn	Checked	Con App

- Legends/Notes:
- All dimensions are in metres unless noted otherwise.
 - All levels are in metres relative to OD (Ordnance Datum, Newlyn) unless noted otherwise.
 - Chainages are expressed in metres and measured from Euston Station.
 - Global coordinates are indicated by Eastings (E) and Northings (N) to the project snake grid.
 - All angles are in degrees (0°-360°) unless noted otherwise.
 - Dimensions are not to be scaled from the drawing.
 - Dimensions and levels are approximate and subject to Detail Design.
 - Landscape areas subject to future Schedule 17 bringing into use approval, for vegetation and embankments please refer to Landscape drawings.
 - Only the location for boundary walls and fencing is for approval. Design of these structures are NOT for approval.

10. For Material Details see plan 1MC04-SCJ_SDH-AR-DPH-SS05_SL07-484211, for specific material reference please see numbers in brackets.
 11. All ground levels shown are approximate and proposed.
 12. Lighting arrangements are for approval under this application.
 13. Road vehicle parking is for approval. Access arrangements/ passing bay are not for approval.
 14. Drawings referred to in plan are for information only.

Zone	West Ruislip Portal			Project/Contract	HS2-MWCC SCS Sector S2		
Design Stage	Detailed Design			Discipline/Function	Architectural		
Drawing Title	West Ruislip Portal Schedule 17 Plans and Specifications Headhouse Elevations For Approval			Drawn	Checked	Approved	
				D.Koroni	V.De Siqueira	M.Gaby	
				Date	Scale	Size	
				20/12/19	AS SHOWN	A1	
				Drawing No.	Rev.		
				1MC04-SCJ_SDH-AR-DEL-SS05_SL07-483211	C01		