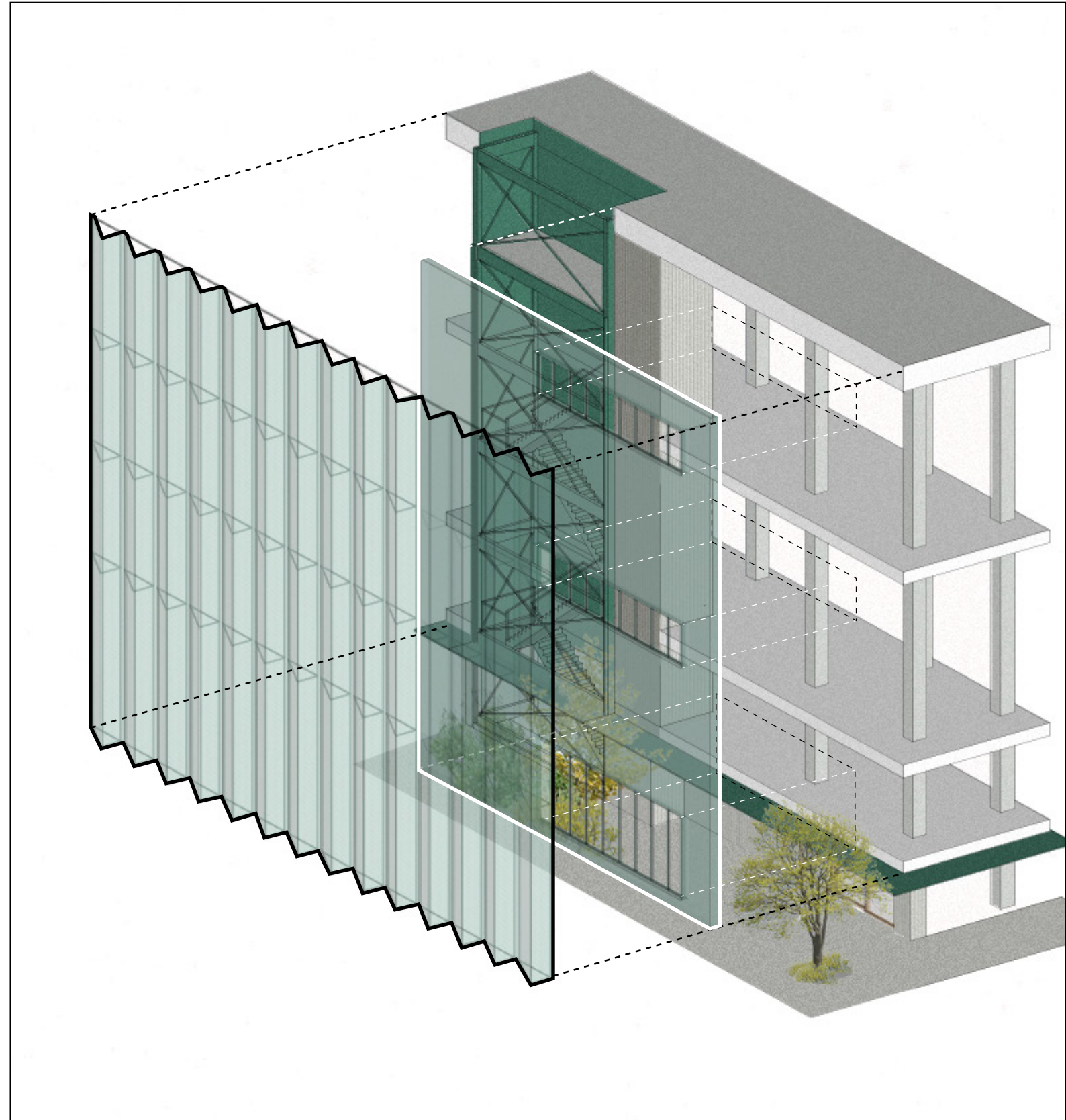


1.0 Facade and depth:

The facade has been designed to have a depth and a profiled cladding, the green metal will be arranged vertically and will provide an articulated facade from street level. This will be on the South and West facades, a more conventional and smoother cladding will be proposed on the East and North sides.



1.1 Glazing and depth:

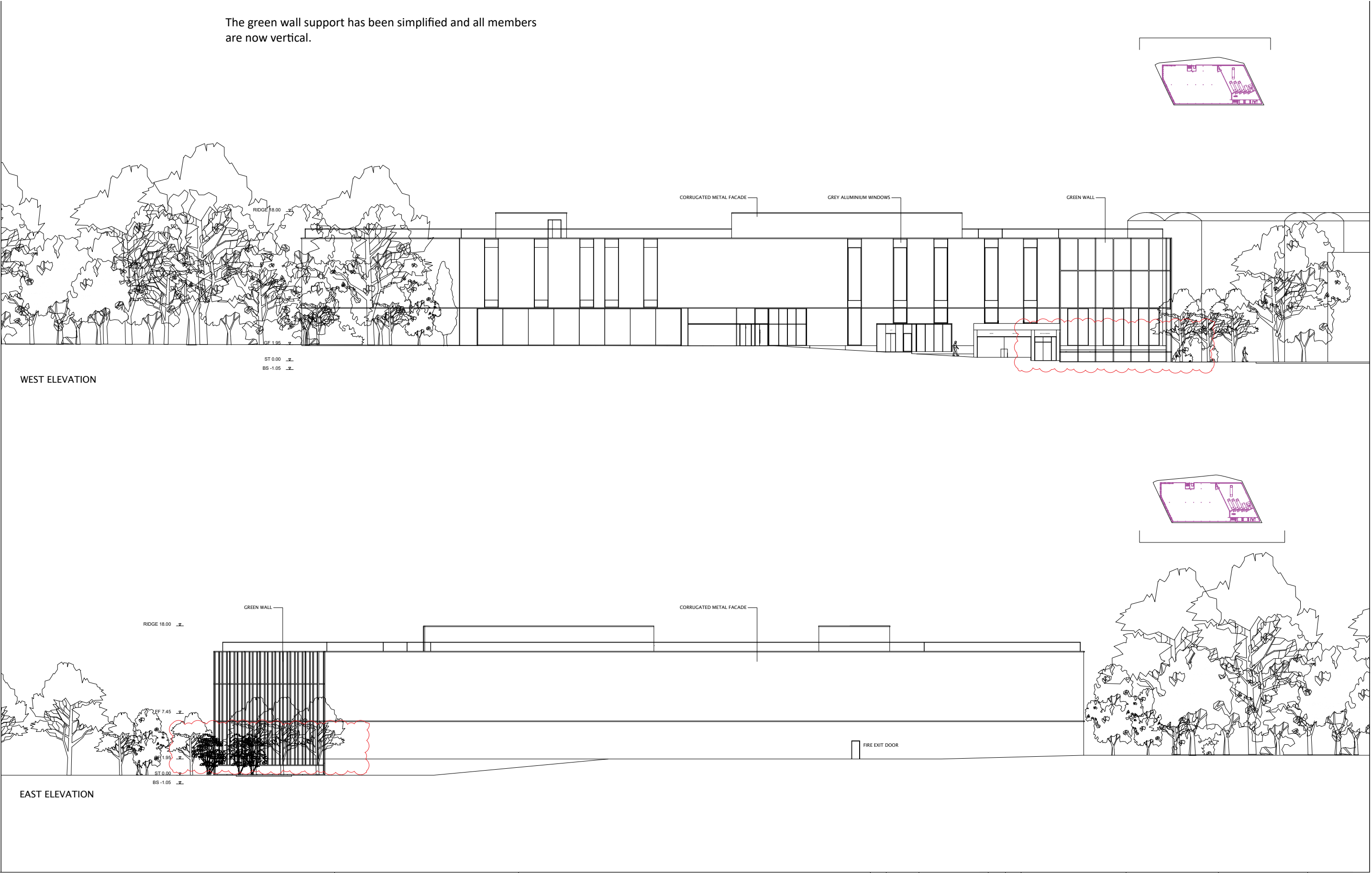
As part of the facade design the windows have been set back from the facade line, which will give them depth and a metal frame and reveal detail.

The glazing has also been designed and placed to aid with the target of the highest energy rating and efficiency.



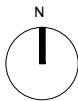
1.2 Green wall

The green wall support has been simplified and all members are now vertical.

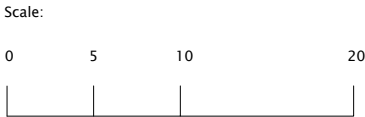


Nick Willson Architects

G2 Hoxton Works
128 Hoxton Street
London N1 6SH
+44 (0)20 7012 1674
www.nickwillsonarchitects.com



Notes:
Scaling for planning purposes only



03	230220	Green wall rev	cad	NW
02	230119	Car entrance rev	cad	NW
01	230108	Cycle entrance rev	cad	NW
Rev	Date	Description	By	NW

Project Beaches Yard	Project description Warehouse	Stage Planning	Job N 0203
Title Proposed West & East Elevation	Scale 1:200@A1	Drawing No 101	Rev 03