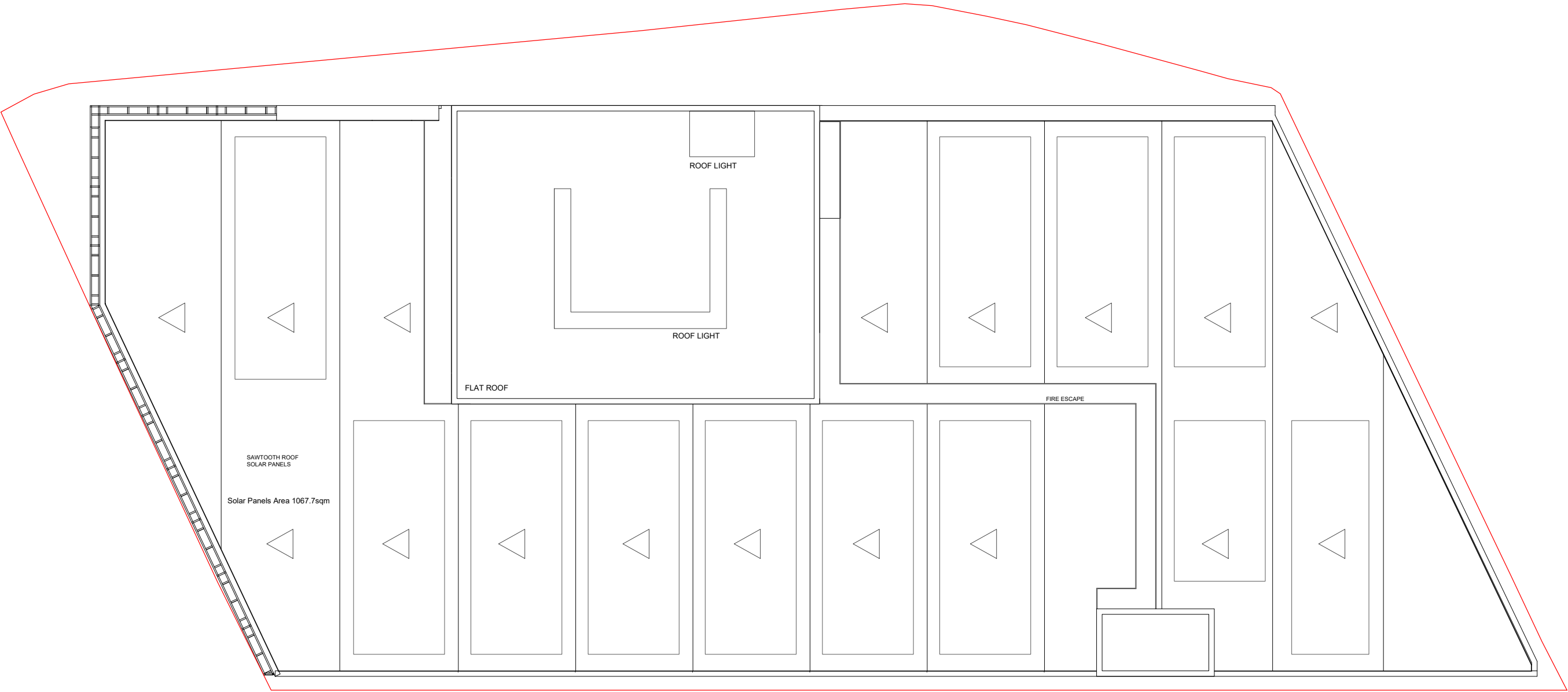
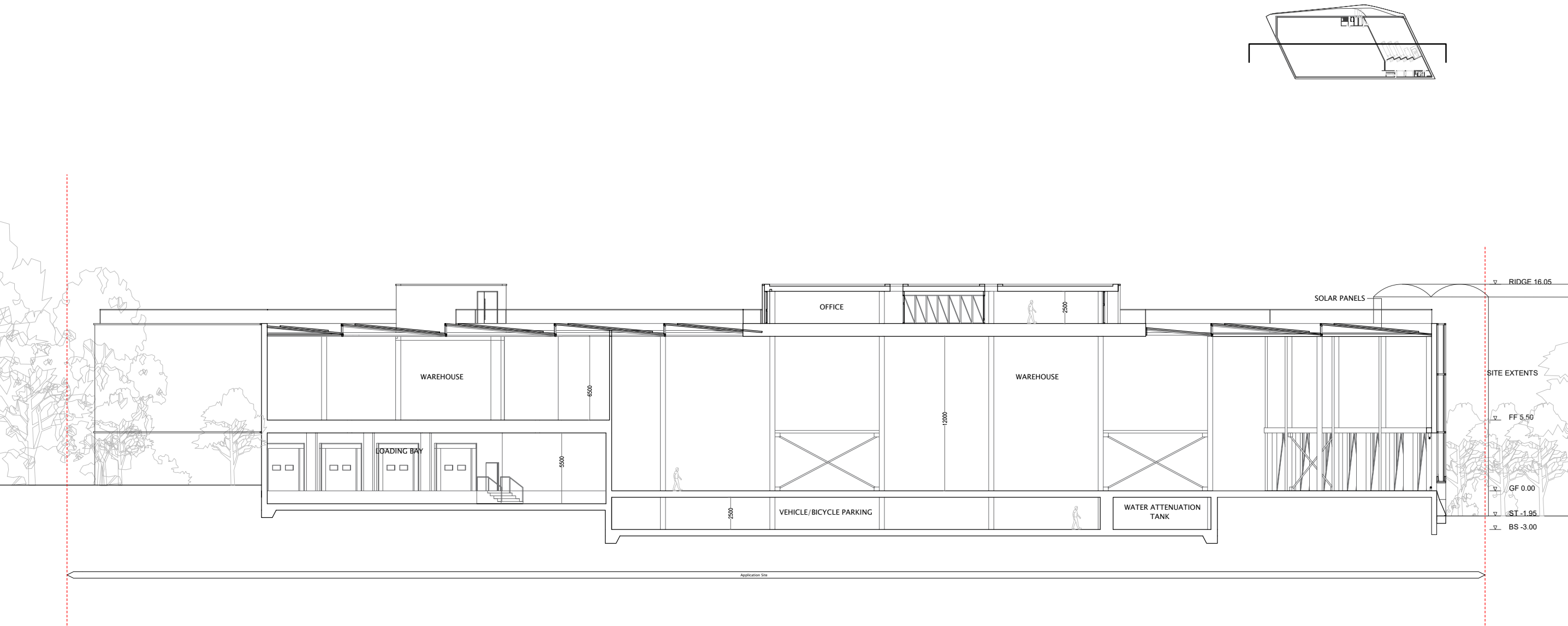


6.9 Roof plan

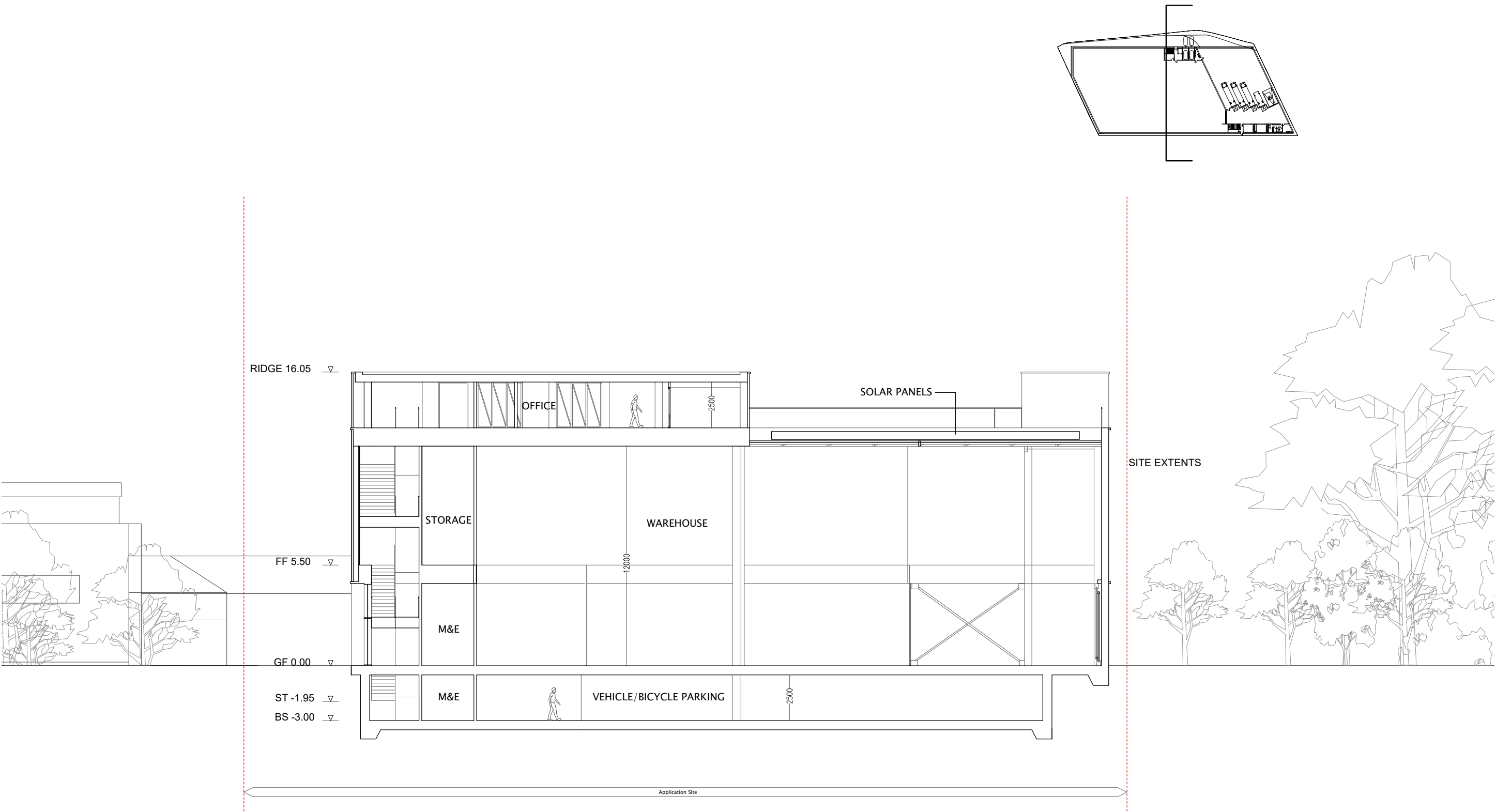


6.10 Sections



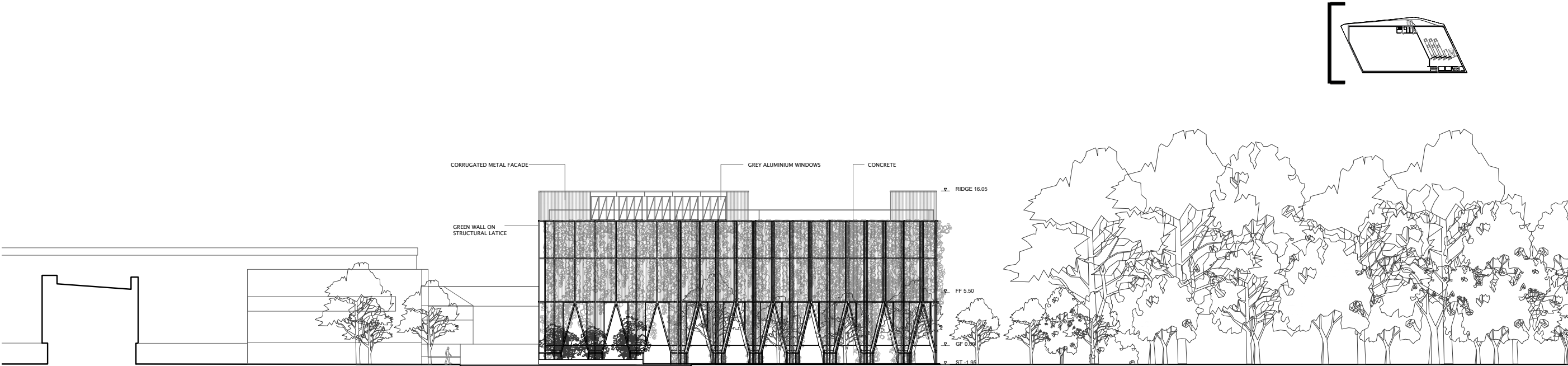
Long Section

6.10 Sections

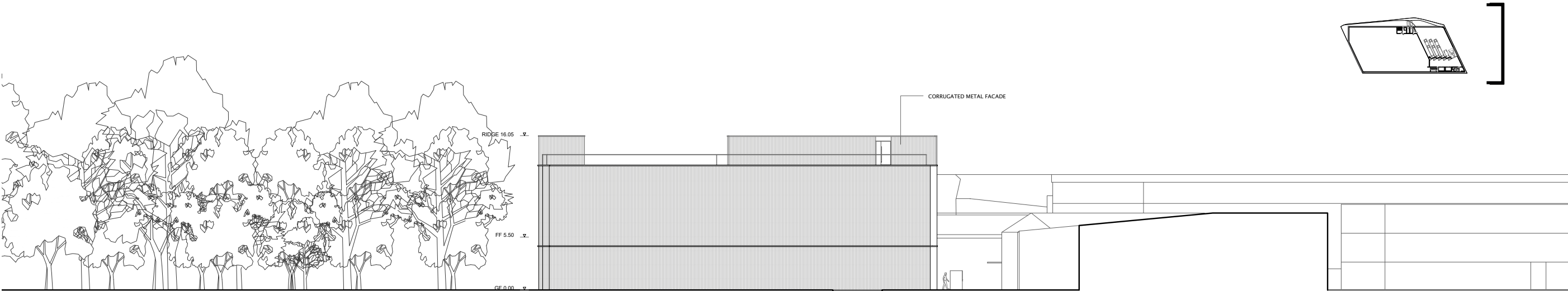


Cross Section

6.11 South and North Elevation

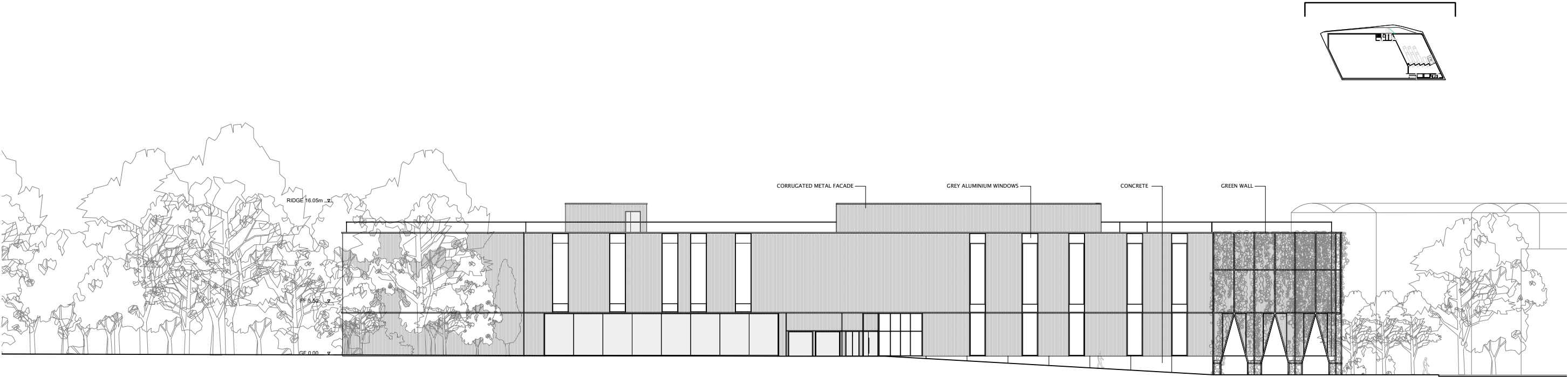


SOUTH ELEVATION

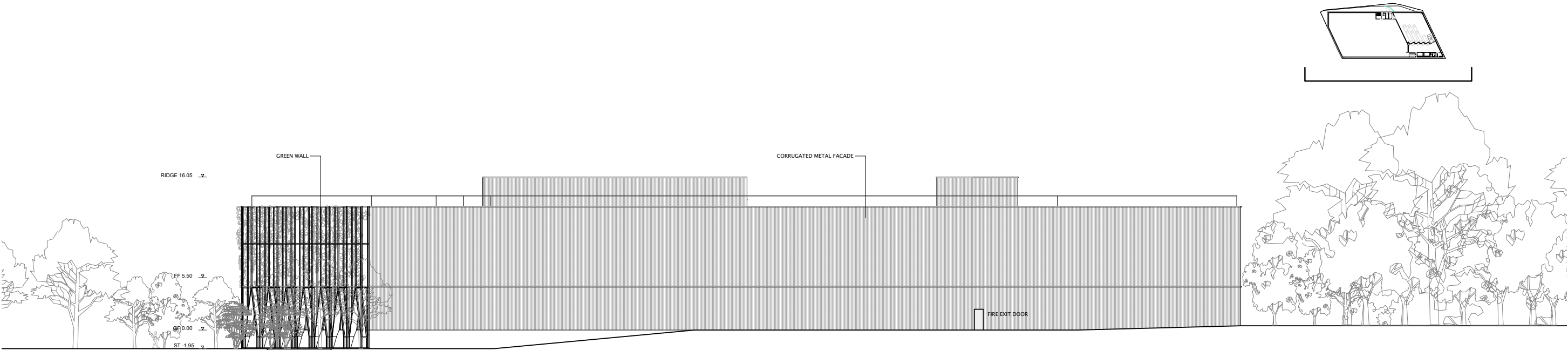


NORTH ELEVATION

6.12 West and East Elevations



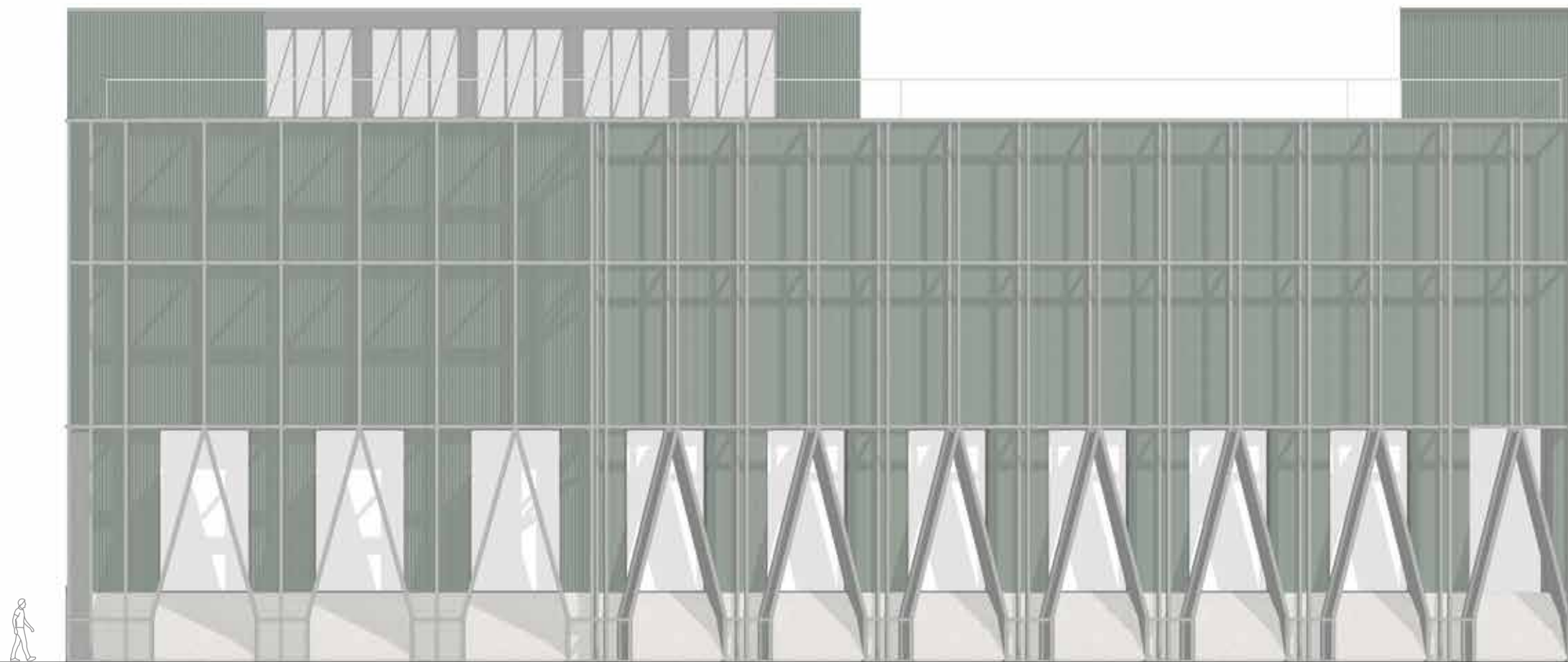
WEST ELEVATION



EAST ELEVATION

6.13 South Elevation

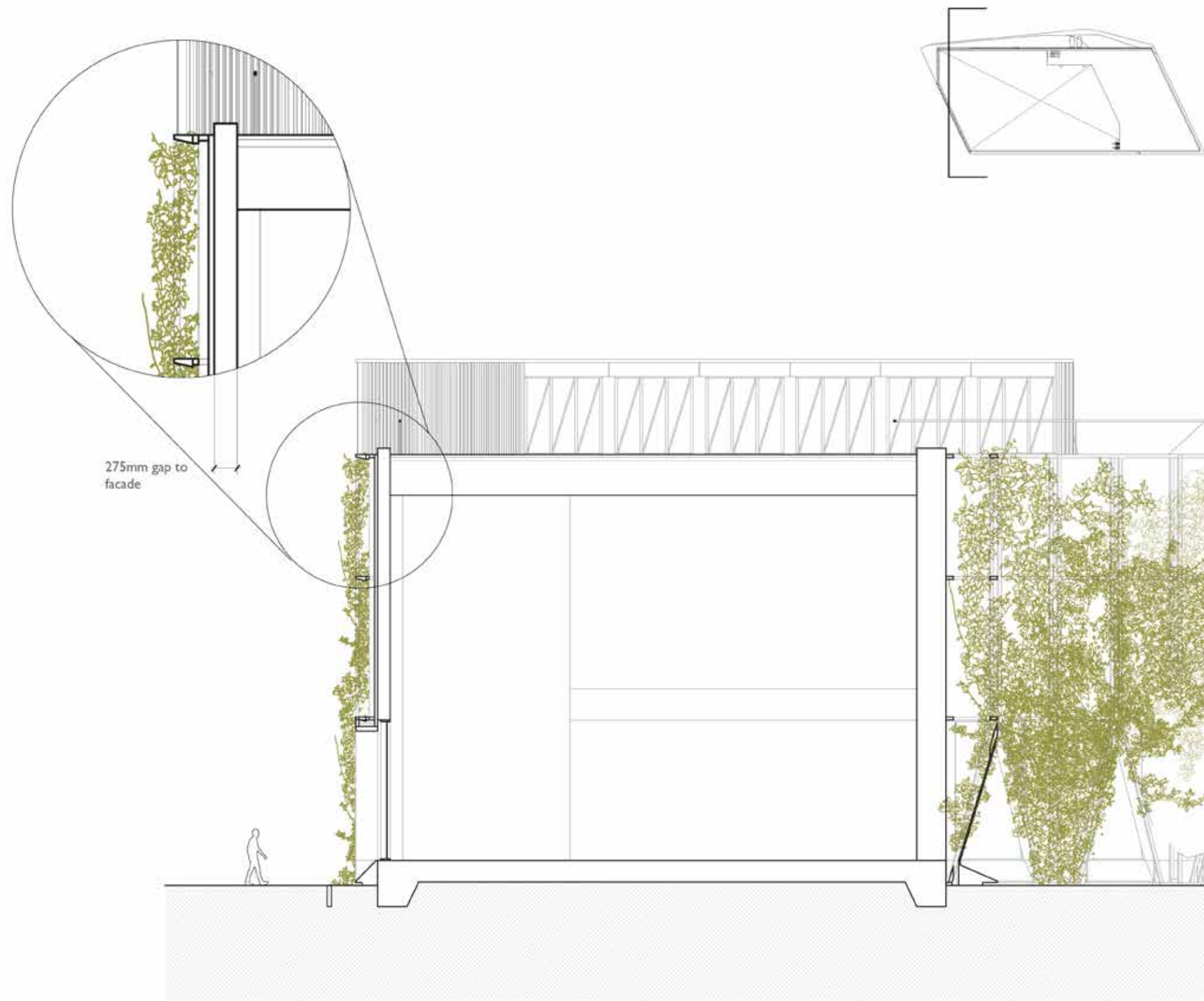
Additional attention was given to the South facade to provide a textured street frontage to the building along Horton Road. Attached to the corrugated facade, a green wall extends the nearby golf course landscape onto the front, softening the visual impact of the building. The green wall comprises a metal structural lattice enveloped in ivy and other climber plants.



6.18 West Elevation

Additional attention was given to the West facade to provide a textured street frontage to the building leading up to the entrance of the building. Long recessed windows articulate the face introducing a series of thresholds and creating a sense of rhythm on the facade.





Early green wall design

6.19 View from West Elevation



6.20 View from Golf course



Outline of Proposed building. 18m in height

The photograph used in this exercise was captured on the 25th of March 2022 in the surrounding context. The picture depicts the visual impact the warehouse will have on its context in wintertime when vegetation is at its lowest density.



B_PhotoGraph

6.21 View from Golf course



Prologis

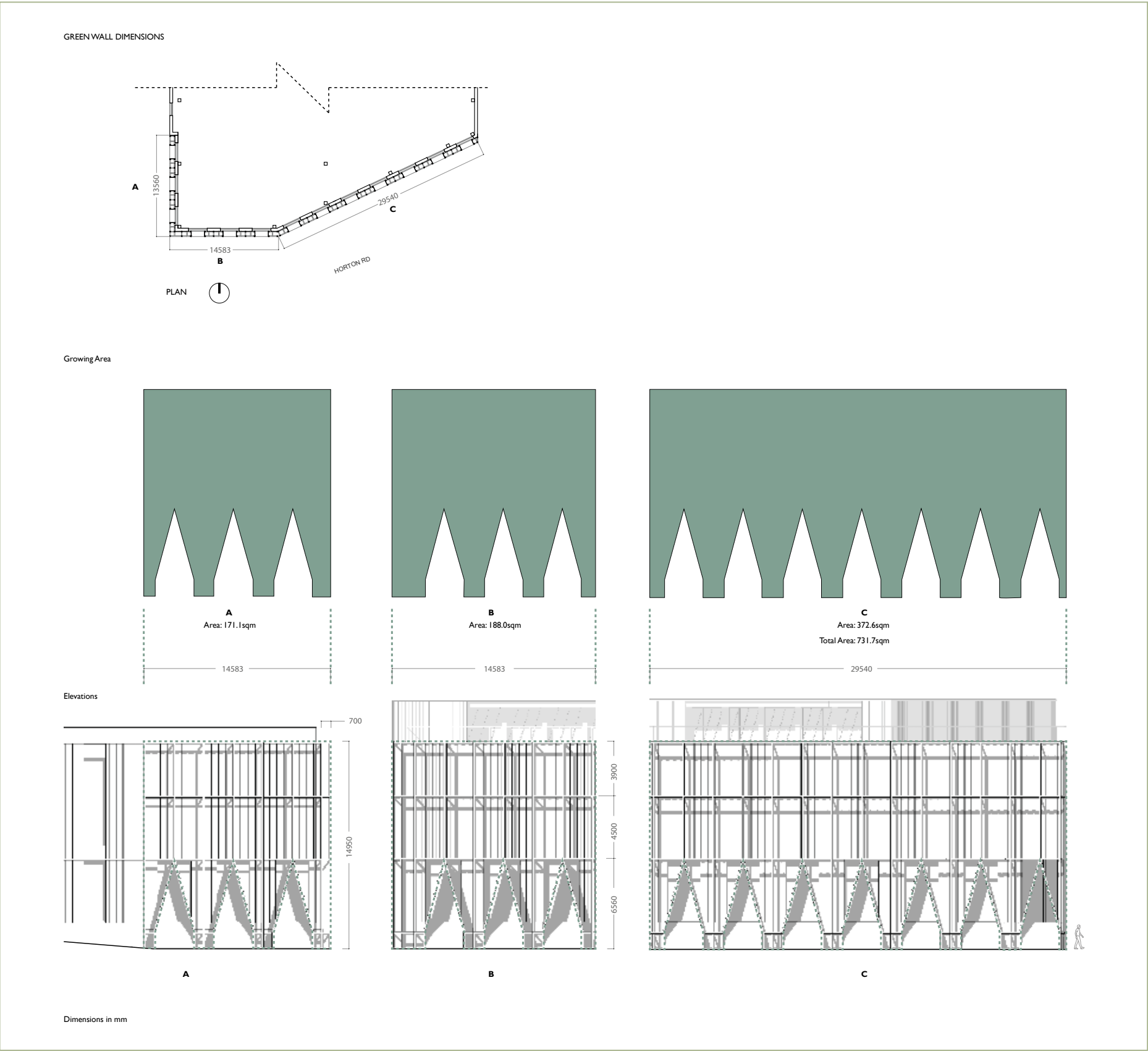
Beaches Yard

6.22 Landscaping strategy

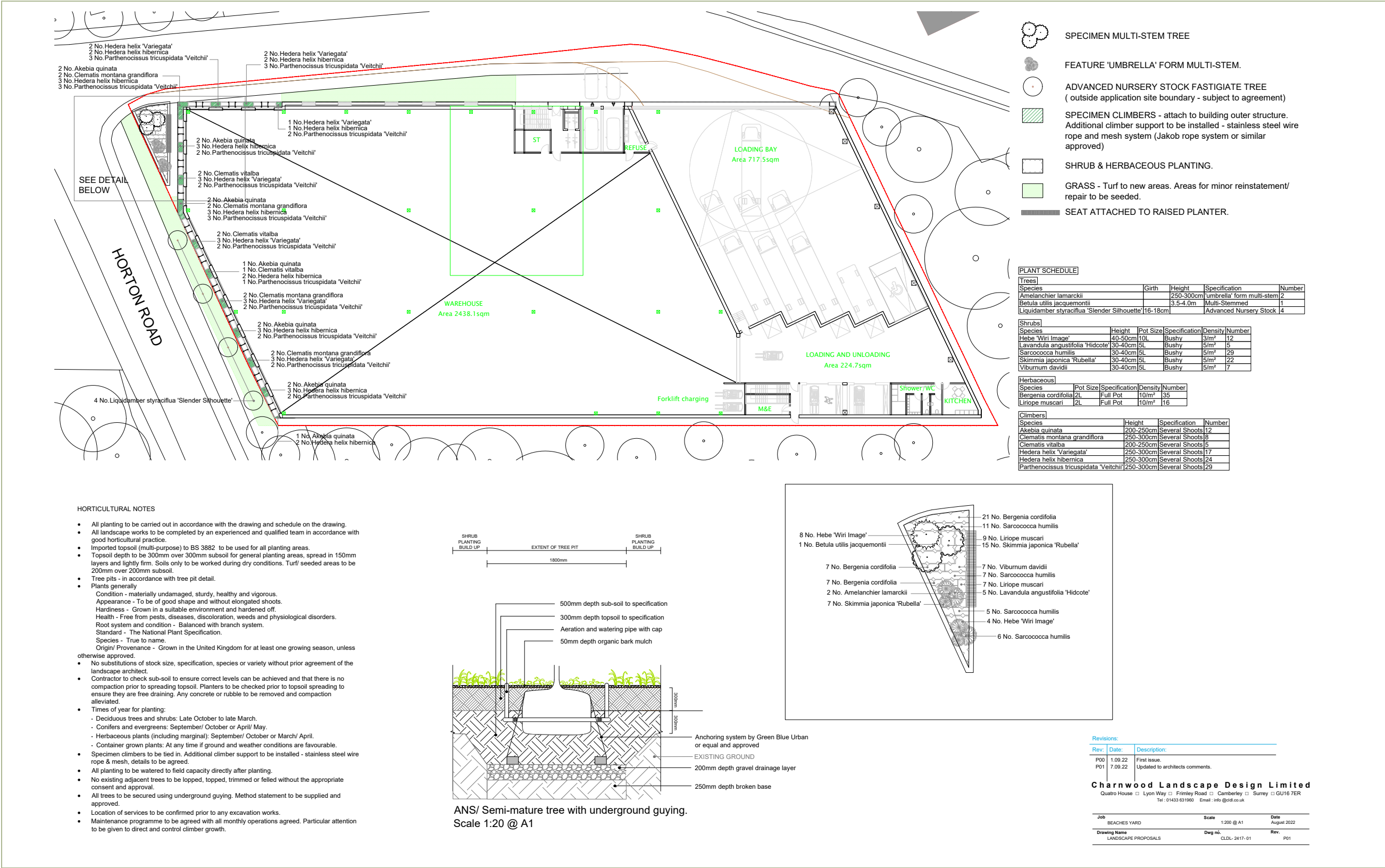
The landscaping strategy is integral to the project and we have taken on board the points made at pre application stage. The corner of the building facing Horton road has been enhanced and improved with a full height green wall. The green wall wraps around the corner of the building and softens the visual impact when viewed from the surrounding areas. A new steel frame that articulates the facade and provide depth and shadow will support plants that will grow from a lush green wall. A sustainable irrigation using rain water will provide watering for the plants. This new green wall will provide 731.7 sqm of new planting

In addition to the green wall we are proposing planting and soft landscaping to the corners of the project, A planter on the corner of Horton road will contain shrubs trees and plants. This will help soften the view from street level and aid with bio diversity. We are also proposing a non irrigated green roof on the top of the office space.

Please refer to the following pages for the exact design and planting types.



6.23 Landscaping strategy



6.24 Landscaping strategy



VERTICAL GREENING

Stainless steel wire rope and mesh system to be installed to support and direct climber growth up and through the metal structure that wraps around the southern and south western building elevations.

Specimen climbers to provide an attractive and dynamic elevational treatment that provides significant long-term biodiversity benefits.



CLIMBERS

Evergreen and deciduous climbers proposed to provide seasonal interest and a balance of growth rates.

- *Akebia quinata* – semi-evergreen climber for full or partial sun.
- *Clematis vitalba* – vigorous deciduous climber.
- *Clematis montana* e.g. *grandiflora* – deciduous, vigorous climber with white flowers late spring and early summer.
- *Hedera helix* – evergreen climber. Numerous varieties available e.g. *Hibernica* 'Variegata', *hibernica*. Valuable source of shelter, nectar and pollen.
- *Parthenocissus tricuspidate* 'Veitchii' – vigorous deciduous climber with good autumn colour, providing valuable habitat for insects and small birds.



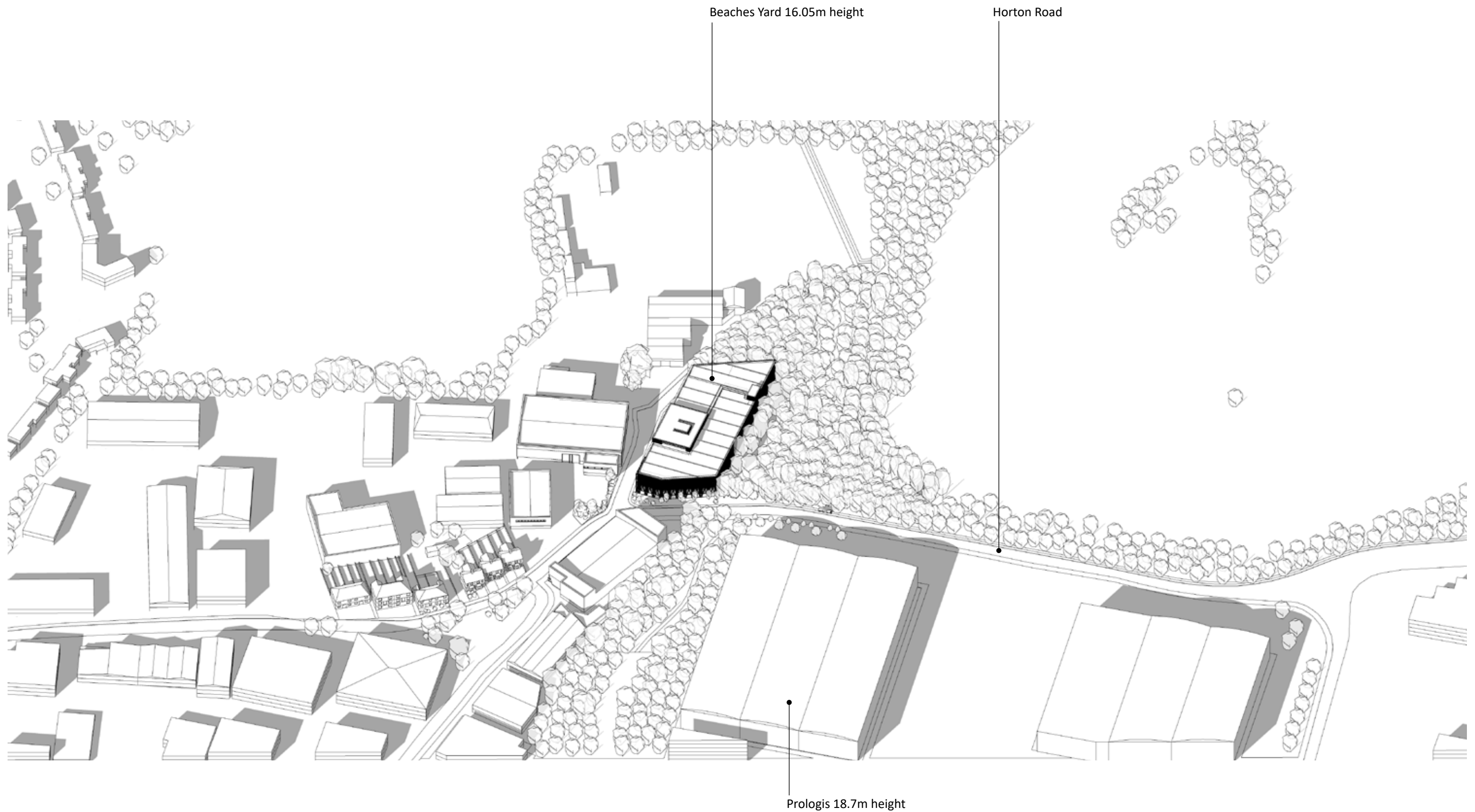
6.25 View from Junction



6.25 View at Entrance



6.26 Context Aerial View



NICK WILLSON ARCHITECTS

G2 Hoxton Works 128 Hoxton Street
London
N1 6SH

02070121674
nick@nickwillsonarchitects.com