
Technical Note

Project:	Beaches Yard, Horton Road, West Drayton	SMA Ref:	6969
Subject:	Waste Management Plan (WMP)		
Prepared by:	Rhys Donoghue	Date:	18.08.2022
Checked by:	David Wiseman	Date:	19.08.2022
Revised by:	Rhys Donoghue	Date:	15.03.2023

1.0 INTRODUCTION

- 1.1. This Waste Management Plan (WMP) has been prepared by Stuart Michael Associates, consulting engineers, on behalf of Harvest Land Management. For a proposed warehouse development at Horton Road, West Drayton. The proposed site layout is shown in **Appendix A**.
- 1.2. This WMP sets out the methods to ensure all waste is efficiently and safely stored and collected. The WMP will be passed to the occupiers of the Site to ensure the sites waste is adequately managed.

2.0 WASTE STORAGE

- 2.1. A waste collection and storage area will be provided on the ground floor, with access off of the warehouse and yard. It is here waste from all floors will be stored before collection by a waste management company. The waste management company has yet to be appointed but will be appointed before the site is operational.
- 2.2. The storage area will have separate bins for recyclable waste including: paper/cardboard, plastic, metal, glass and textile, and non-recyclable waste. All waste will be sorted by the employees to ensure that all recyclable items can be correctly recycled. This will minimise the waste generation of the development.
- 2.3. It is not anticipated that operations within the warehouse will generate hazardous materials, however due to the nature of warehouse operations hazardous waste will need to be disposed of. This could include flammable or corrosive items. To ensure the danger of these items is minimised they will be stored in secure safety containers until they can be collected.

3.0 WASTE COLLECTION

- 3.1. A waste management company will be appointed which will ensure the regular scheduled collection of waste generated by the development.
- 3.2. Collections will be scheduled to minimise conflict with traffic on the local highway network in the peak commute hours and any deliveries to the site.
- 3.3. All waste collections from the site will be overseen by a member of staff who is trained to use the HGV turntable.
- 3.4. Swept path drawings for a refuse vehicle are shown on **Drawing 6969.005D**.

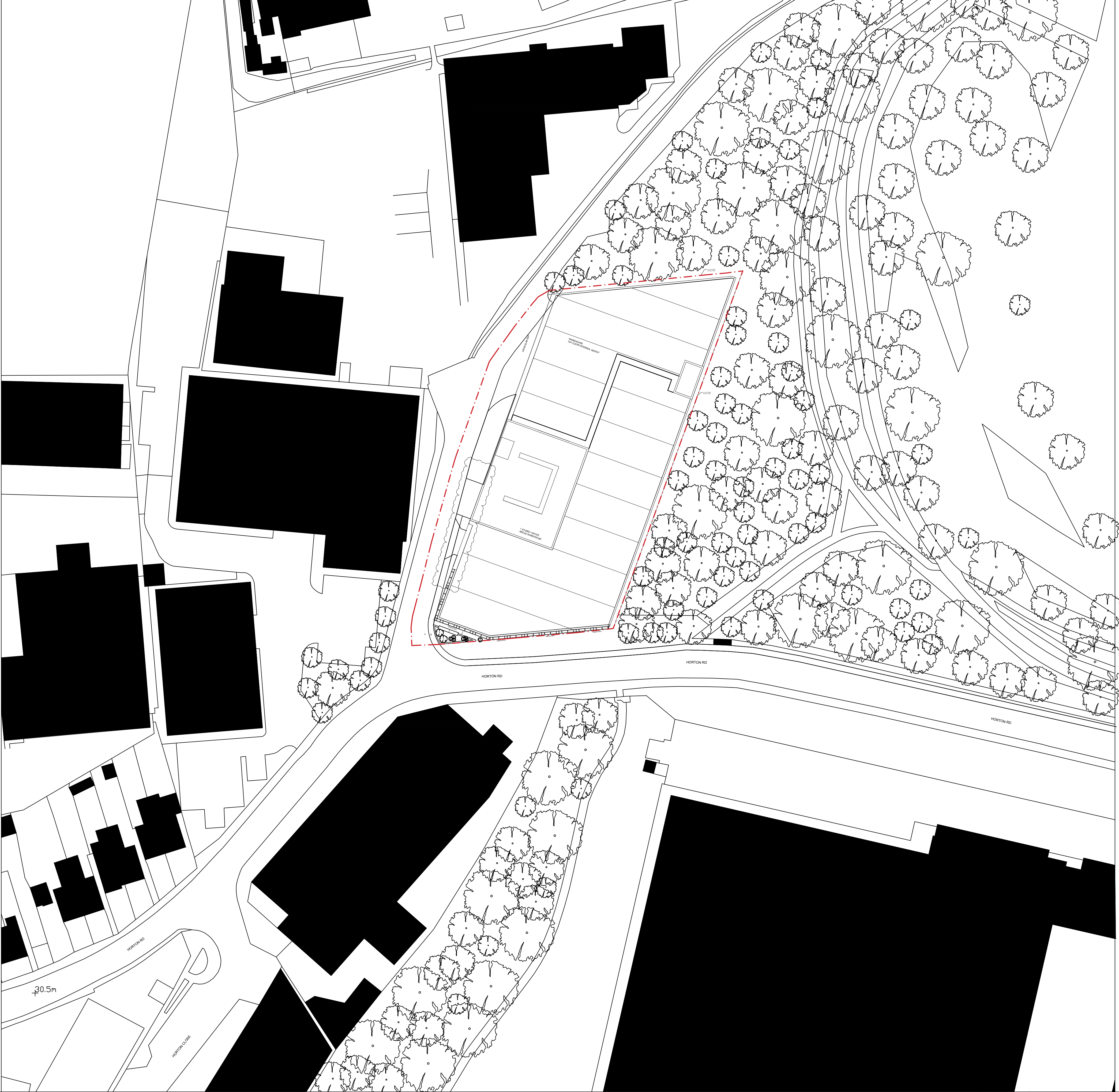
4.0 WASTE MANAGEMENT

Waste Reduction

4.1. Consideration will be given to processes within the warehouse operation to ensure minimal waste is generated. Examples of some process include:

- Reduce the amount of surplus materials by ordering the correct amount of materials at the right time;
- Minimise the use of non-recyclable products;
- Minimise spoilage, through 'just in time' deliveries and secure, dry storage facilities.

APPENDIX A

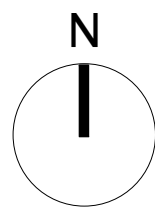
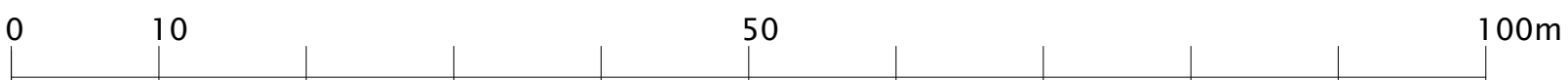


Nick Willson Architects

G2 Hoxton Works
128 Hoxton Street
London N1 6SH
+44 (0)20 7012 1674
www.nickwillsonarchitects.com

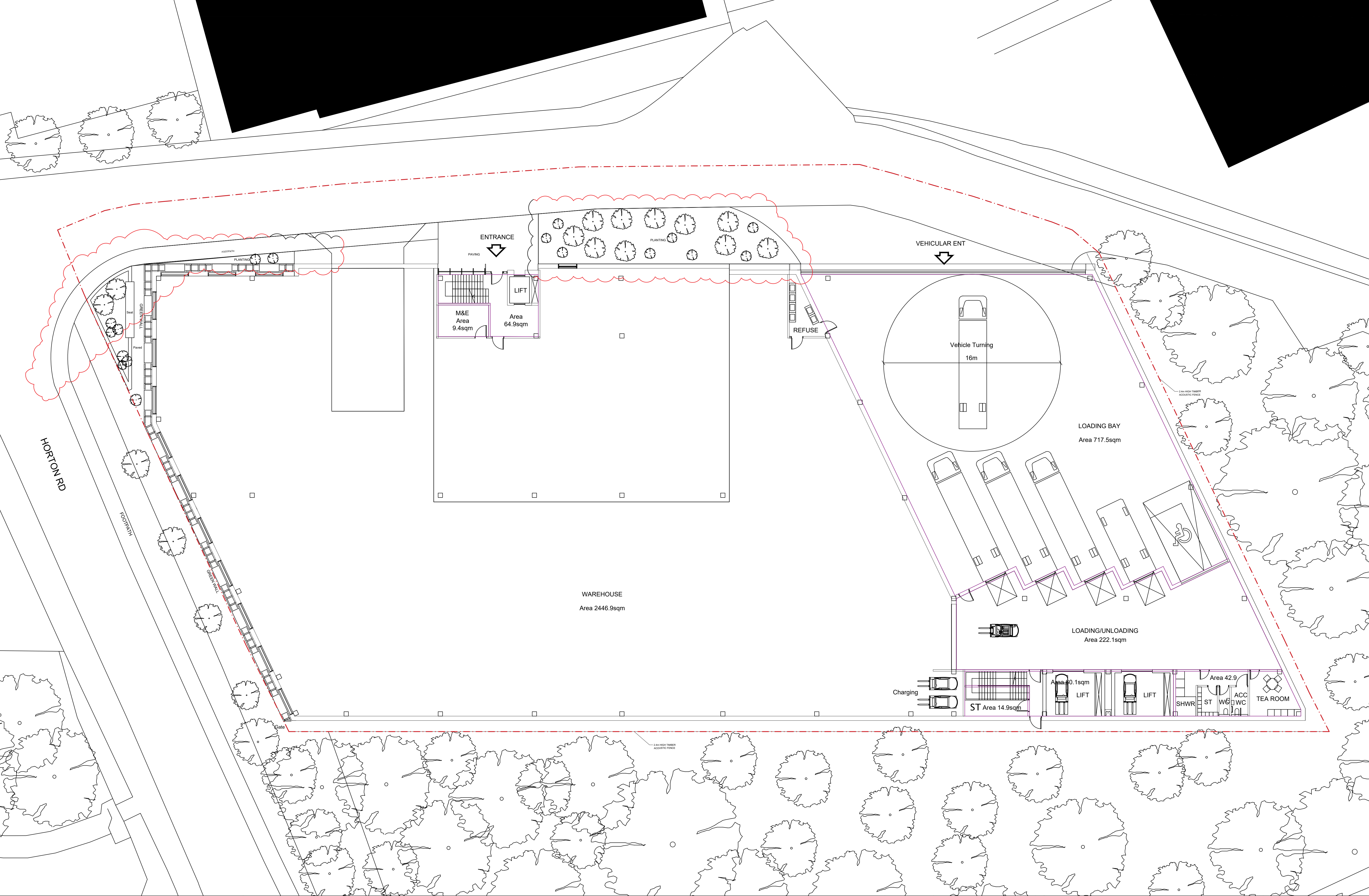
Notes:
All dimensions to be confirmed by contractor on site.
Do not scale from drawings.

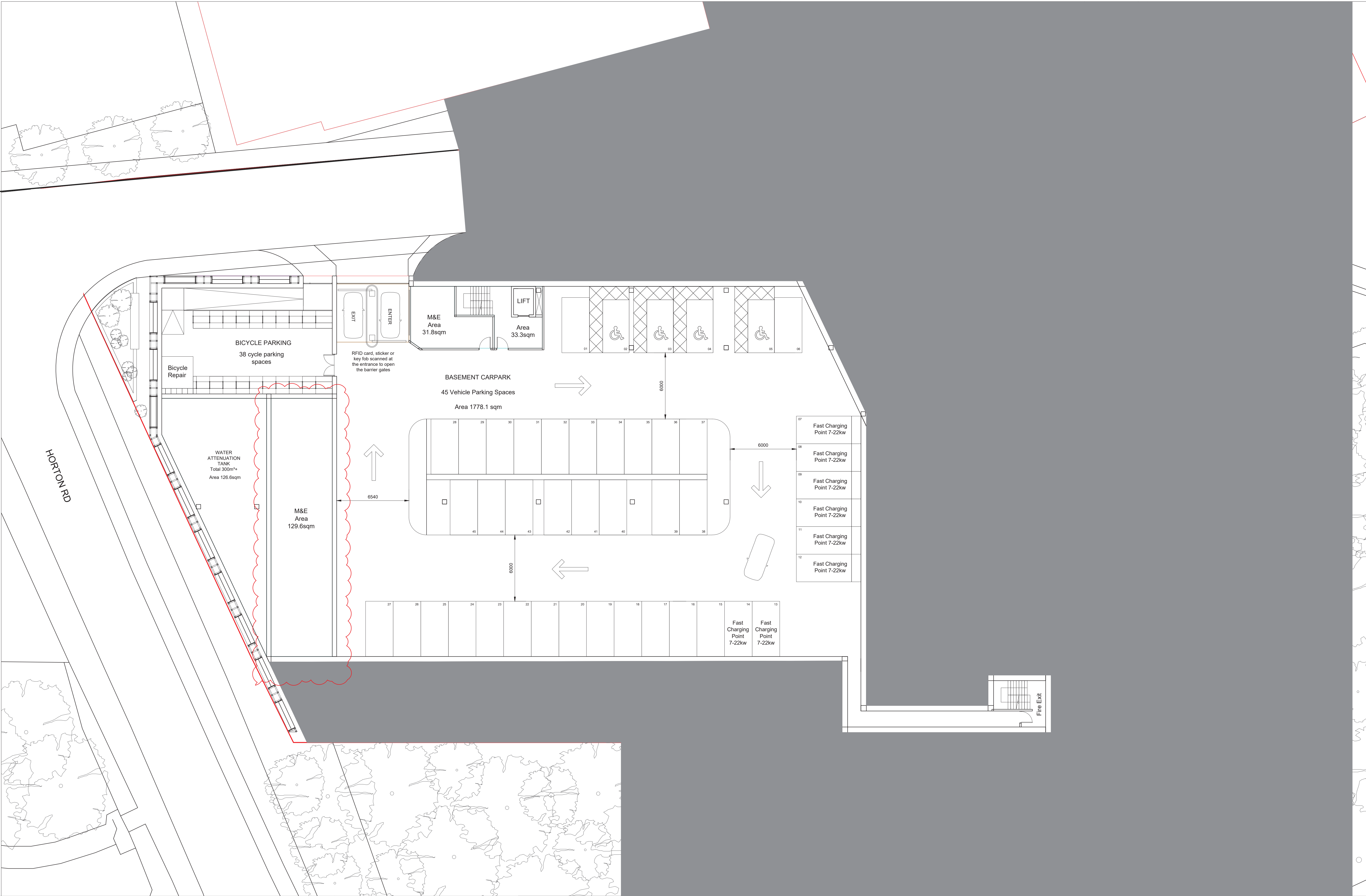
Scale 1:500

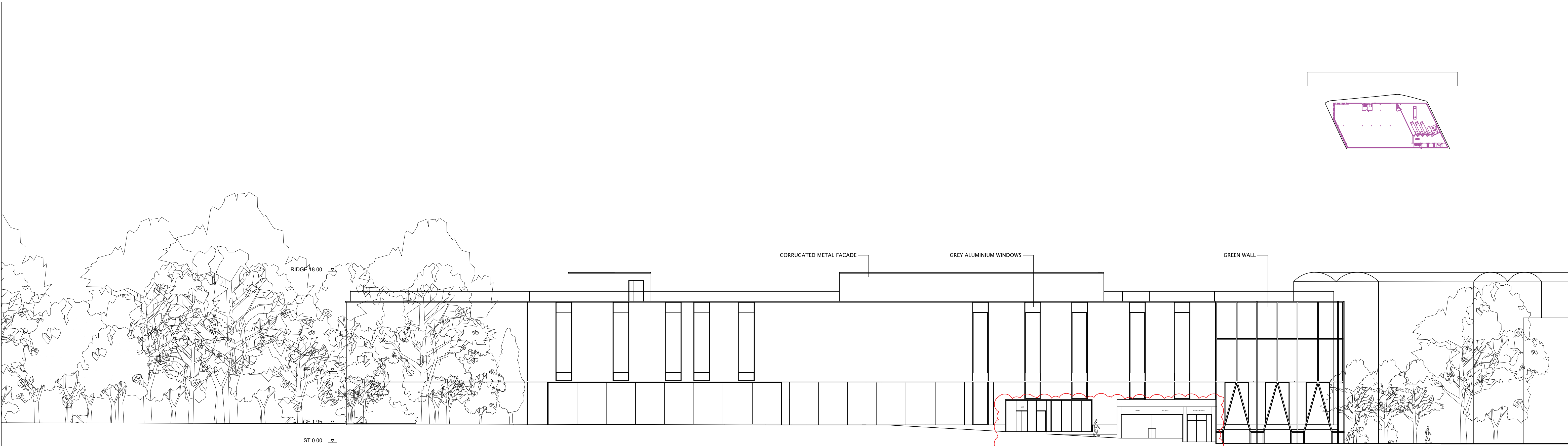


03	23/03/10	site boundary			
02	23/01/24	site boundary/entrance			
Rev	Date	Description	By	NW	

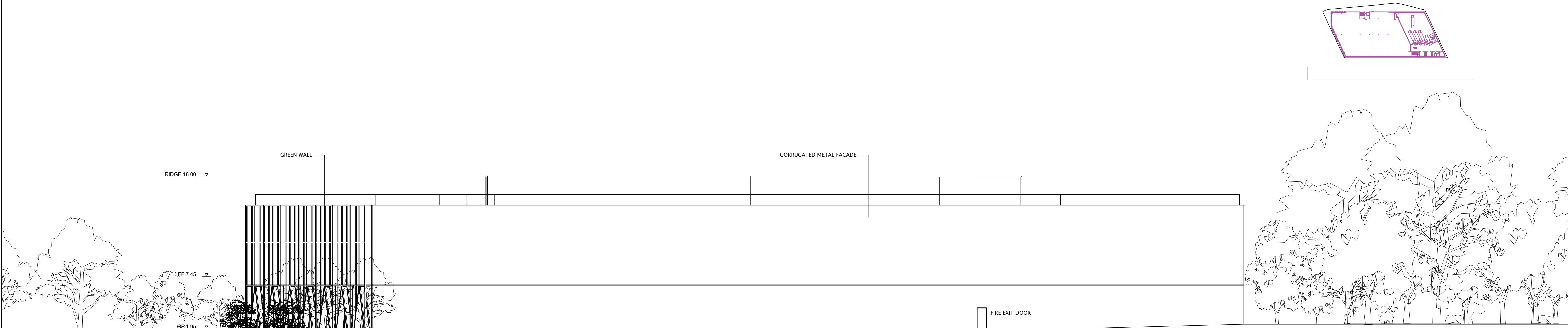
Project	Beaches Yard	Project description	Warehouse	Scale	1:50@A1 1:500@A3	Job No	0203
Title	Site Layout Plan	Stage	Planning	Drawing No	003	Rev	03







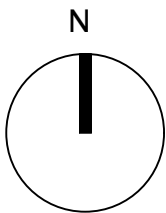
WEST ELEVATION



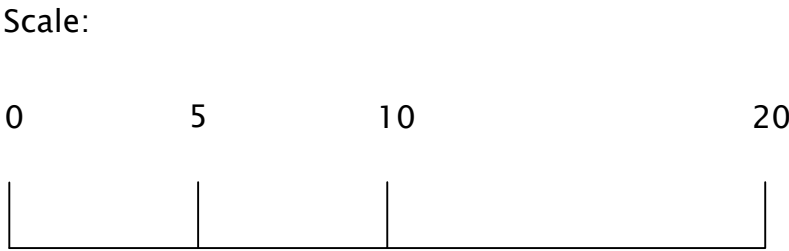
EAST ELEVATION

Nick Willson Architects

G2 Hoxton Works
128 Hoxton Street
London N1 6SH
+44 (0)20 7012 1674
www.nickwillsonarchitects.com



Notes:
Scaling for planning purposes only



02 01	23/01/19 23/01/08	Car entrance rev Cycle entrance rev	cad cad	nw nw	Project Beaches Yard	Project description Warehouse	Stage Planning	Job N 0203
					Title Proposed West & East Elevation	Scale 1:200@A1	Drawing No 101	Rev 02

DRAWINGS



D	LAYOUT UPDATED	RD	RD	15.03.23
C	LAYOUT UPDATED	RD	RD	23.01.23
B	LAYOUT UPDATED	RD	JGP	02.12.22
A	LAYOUT UPDATED	RD	DLW	13.09.22
Rev	Description	Drn	Chk	Date

REVISIONS				
Preliminary	Approval	Tender	Const.	

DATE	AUG 22	DRAWN	RD	CHECKED	DLW	ISSUE	CHECKBOX
DRAWING No.	6969.005	REV	D	SCALE	1:500	@	A3

© This drawing is the copyright of Stuart Michael Associates Limited. It may not be reproduced or amended without the written approval of Stuart Michael Associates



STUART MICHAEL ASSOCIATES
CONSULTING ENGINEERS

Stuart Michael Associates Ltd
Coombe House, Coombe Square, Thatcham, Berkshire RG19 4JF

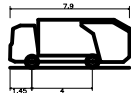
T: 01635 867 711

e: mail@stuartmichael.co.uk

F: 01635 861 715

w: www.stuartmichael.co.uk

PRIVATE REFUSE VEHICLE



Private Refuse Vehicle
Overall Length 7.900m
Overall Width 2.400m
Overall Body Height 2.400m
Min Body Ground Clearance 0.380m
Max Track Width 2.400m
Lock to lock time 6.000m
Kerb to Kerb Turning Radius 9.025m

JOB TITLE
BEACHES YARD, HORTON ROAD,
WEST DRAYTON

DRAWING TITLE
WASTE MANAGEMENT AUTOTRACK
SWEEP PATH ANALYSIS