

27-45 PETWORTH GARDENS, HILLINGDON
Landscape Strategy - March 2023

PLANTING - Indicative species

TREES



Malus sylvestris
Crab apple



Crataegus monogyna
Hawthorn

Shrubs



Lavandula angustifolia 'Hidcote'
English lavender

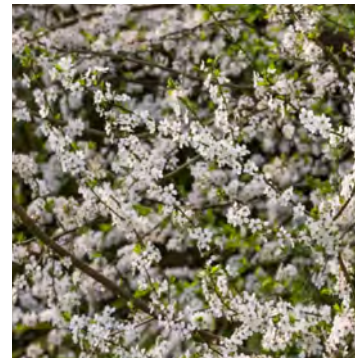
Native Hedge



Acer campestre
Field Maple



Ilex aquifolium
English Holly



Prunus avium
Wild cherry

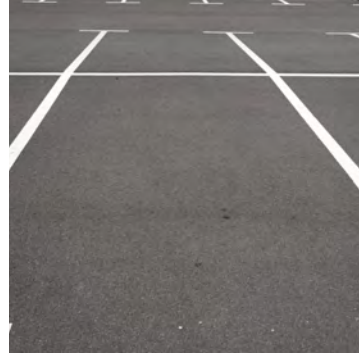


Rosa canina
Dog Rose

HARD SURFACING, FURNITURE - Precedent images



Drivesett Tegula Priora
Colour: Traditional
Patios, pedestrian paths,
front of development



Tarmac
Drive, parking



Close boarded timber fence panels
Boundaries

LIGHTING - Precedent images



Hunza Hunza Pillar Lights
Wall Mounted or Similar
Colour: Stainless steel
Dwelling entrance



Hunza PURE LED Bollard Light
or Similar
Colour: Stainless steel
Driveway

BIODIVERSITY ENCHANCEMENT - Wildlife friendly planting

NATIVE PLANTS FOR BIRDS



Hawthorn

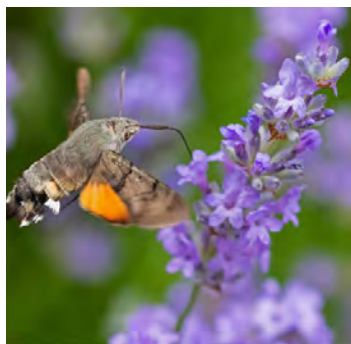


Holly

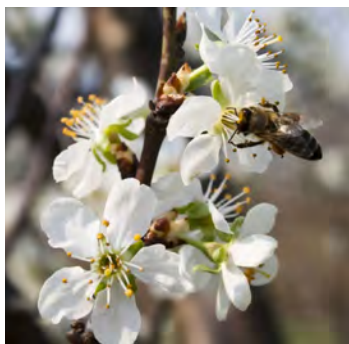


Dog rose

NATIVE PLANTS FOR POLINATORS



Lavender



Wild cherry



Crab apple