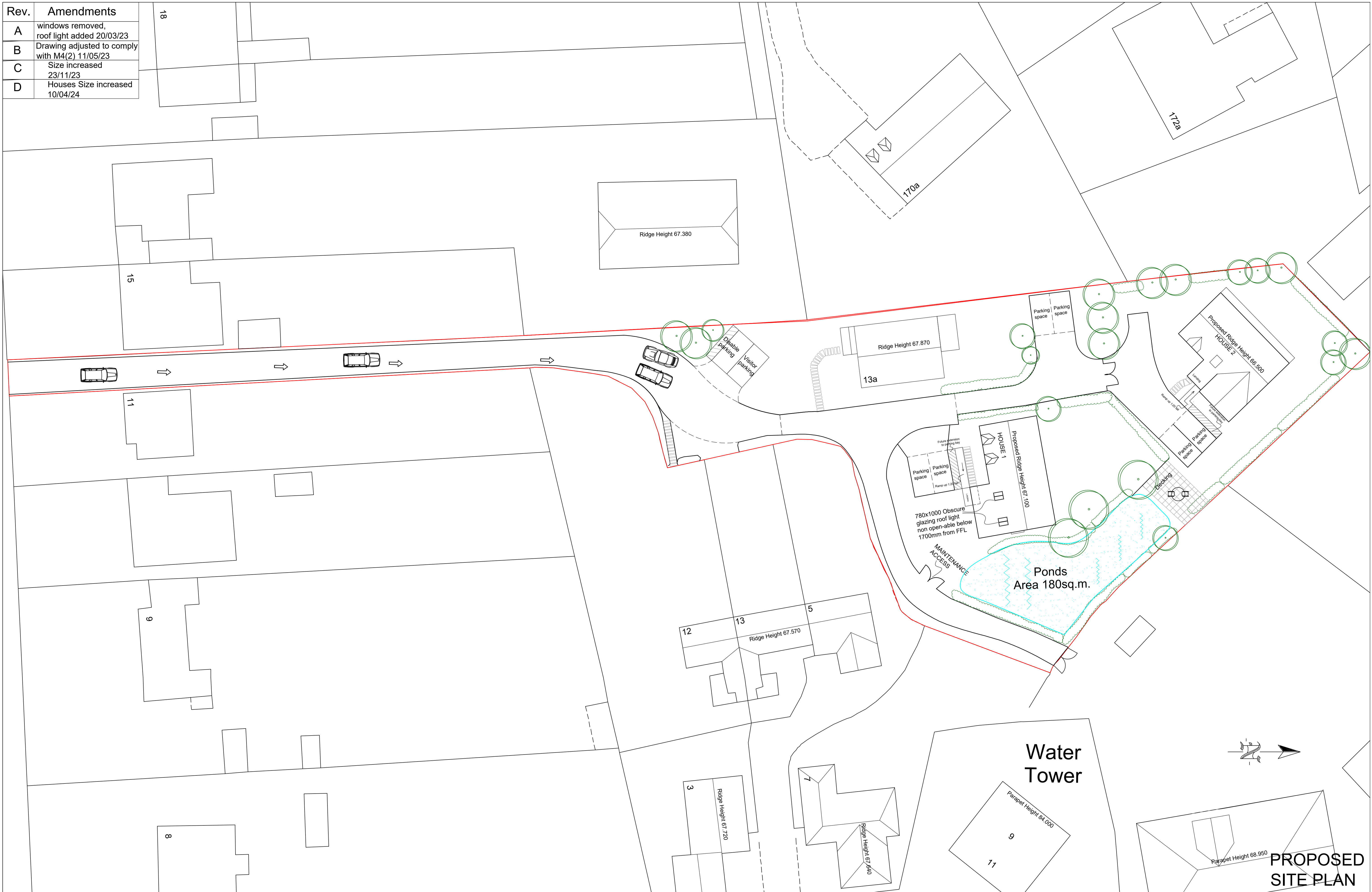
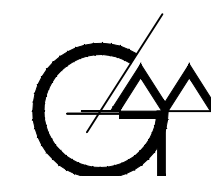


Rev.	Amendments
A	windows removed, roof light added 20/03/23
B	Drawing adjusted to comply with M4(2) 11/05/23
C	Size increased 23/11/23
D	Houses Size increased 10/04/24



13A NORTH COMMON ROAD, UXBRIDGE, LONDON. UB8 1PD



THE GILLETT MACLEOD PARTNERSHIP  
Chartered Architects & Town Planning Consultants  
1 High Road Old Eastcote Pinner Middlesex HA5 2EW tel. 0208 868 1333

Drg. No.	22/3511/23	<div>REVISION</div> <div>D</div> <div> <div>C</div> <div>drawn</div> </div>
Scale	1:200	
Date	18/05/22	
Drawn by	AK	