

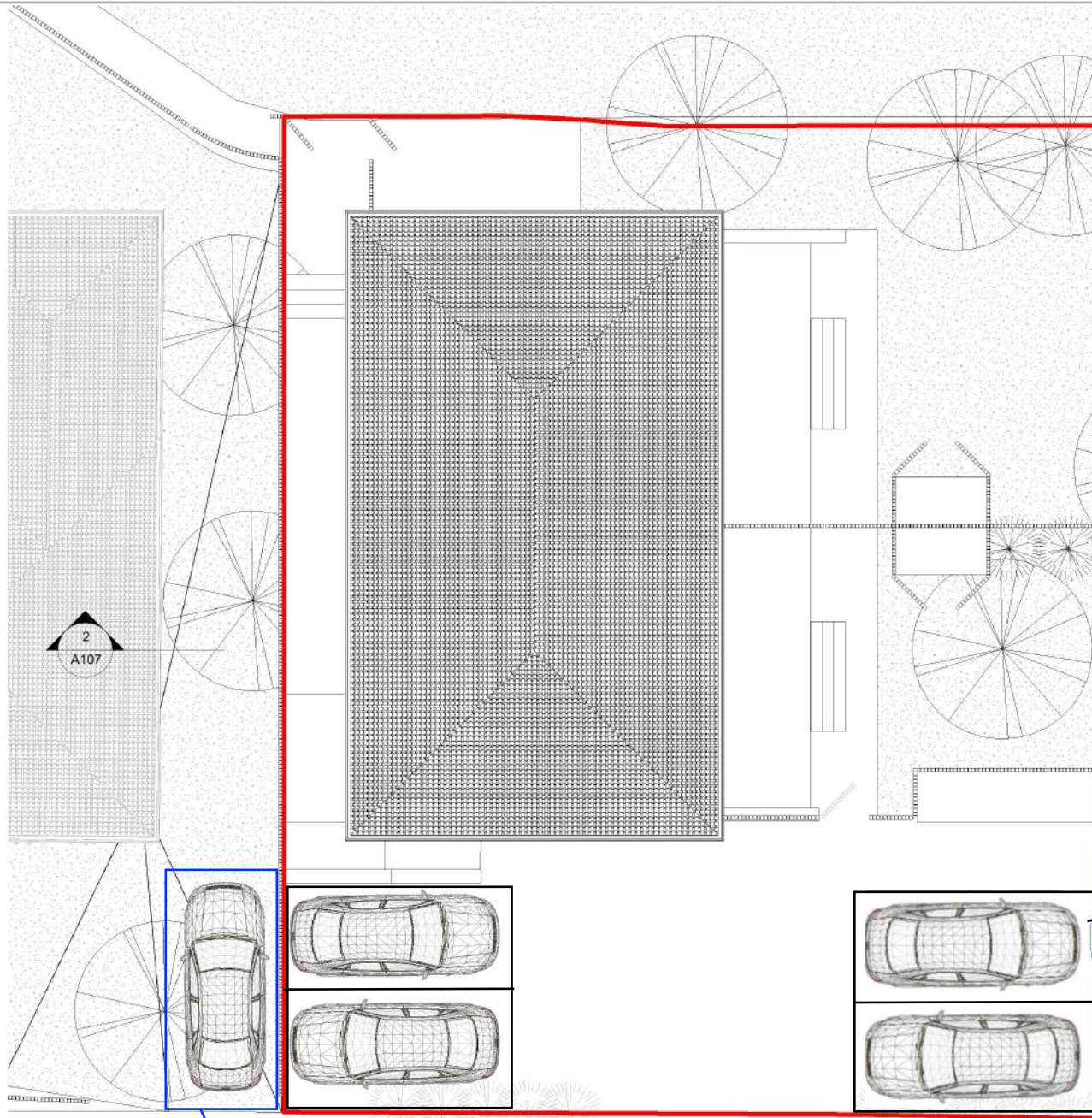
Parking Allocation Scheme

Finished development will have 4 distinct parking spaces.

Once development commences, each dwelling will be assigned a door number by the Street and Naming department.

These numbers will be marked clearly on the car park spaces.

This allocation will remain in place for the lifetime of future ownership, unless agreed otherwise by future owners.



Each car park space to be 2.4m x 4.8m to meet minimum standards

Please refer to planning 74136/APP/2018/3285, where planning was granted for vehicular crossover and hardstanding to the front. 1 car park space to constructed at 7 Berkeley Close during development. Highways department to construct crossover.