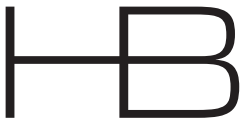


# HESELBRAND

Revision B - 01.11.2022

EXTERNAL MATERIALS, LANDSCAPING & BIKE & WASTE STORGE SPECIFICATIONS  
Planning Ref: 74574/APP/2019/431  
42-48 Windmill Hill, London

70 Hatton Garden, London EC1N 8JT +44 (0) 20 7242 7633 Pilestredet 75C, 0354 Oslo +47 (0) 92 460 468



The following document along with the attached drawings show the proposed external materials, and details for the new development at 42-48 Windmill Hill - 74574/APP/2019/431 as requested in the approval letter. This document seeks the discharge of Condition No.3, 5 & 7.

#### Noted Conditions

- Condition to control the external materials (No.3)
- Condition to require further details of the proposed landscaping (No.5)
- Condition of secure cycle storage and control storage of waste within the site (No.7)

#### Condition No.3 - Condition to control the external materials

The drawings 053-A-100, 053-A-104, 053-A-203 and 053-A-300 show the proposed external materials. The materials included are the following:

- Fascia cladding
- Curtain walling
- Balcony railings
- Sliding doors & windows
- Tiling to Balconies
- EML cladding to external staircase
- Corrugated cladding sheets

#### Condition No.5 - Condition to require further details of the proposed landscaping

The drawings 053-A-100, 053-A-104, 053-A-300 show how we intend to hard landscape the site through the use of urban steel planters, concrete paving and external lighting.

The site is predominately urban and has a shared access to a working motorbike garage and 2 x residential units and therefore requires a strong and durable floor finish in cast concrete.

Planting needs to be easily maintained and protected from high traffic and therefore we propose a series of long rectangular steel planters to be positioned at the entrance of the main site as well as the entrance to the residential units. All planters will be inspected and watered on a regular basis with any dying plants replaced.

Modern, durable and subtle external light fittings are proposed along the entrance wall to the main site as well as in high traffic areas (bike storage and stairwell) of the residential units.

#### Condition No. 6 - Condition of secure cycle storage and control storage of waste within the site

Drawing 053-A-100 shows how we intend to provide safe cycle storage for both the residential units and the motorbike showroom.

We propose to install two-tiered cycle racks for 8nr. cycles to the side of the main building, underneath the residential staircase. The two-tiered racks allow for a greater amount of storage and easier access (there is not sufficient space for the required capacity using Sheffield cycle stands). This is ample storage for the 2nr. apartments in the proposal plus additional space for visitor cycle storage.

This zone is protected from the weather, out of sight from the main road and located behind and secure & lockable gate.

#### Condition No. 7 - Condition of details to storage of refuse bins

The proposal to control waste from both the residential flats and the motorbike garage is to install an external black metal bin enclosure that encases 2 x wheelie bins per flat and 1 x 1100L Euro bin for the garage. All bins will correspond with Hillingdon council and each unit will have their own access door. The enclosure is durable and modern in appearance for its intended purposes.

## 1. FASCIA CLADDING

Supplier - Aluminium Pressings

Specification / Notes - Aluminium fascia cladding to external columns and parapet

Colour - Black



## 2. CURTAIN WALLING SYSTEM

Supplier - Lancashire Shop fronts

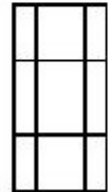
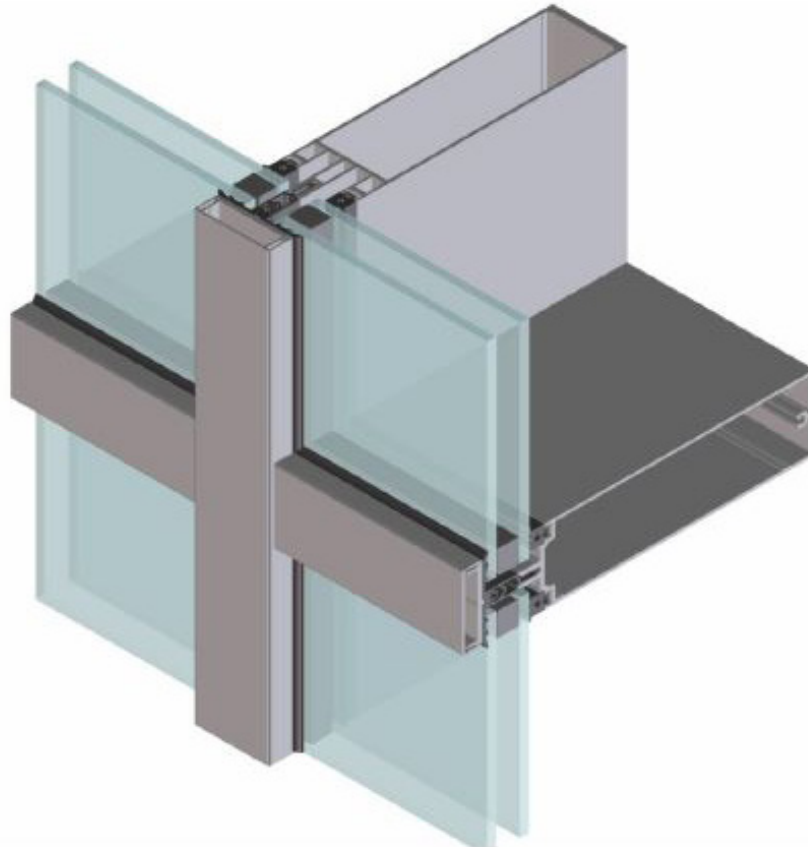
Specification / Notes - Comar 6EFT. Combination of glass and solidpanels

Colour - Black

### 2 Typical details Comar 6EFT

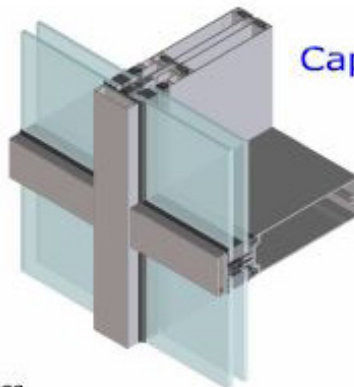
Copyright and ownership of this drawing is vested in EFT.  
Euro Facade Systems Ltd, whose prior written consent is required  
for its use, reproduction or for publication to any third party.  
All other rights reserved.  
Subject to modifications.

Capped



Fabricators Guide

Capped Split Mullion



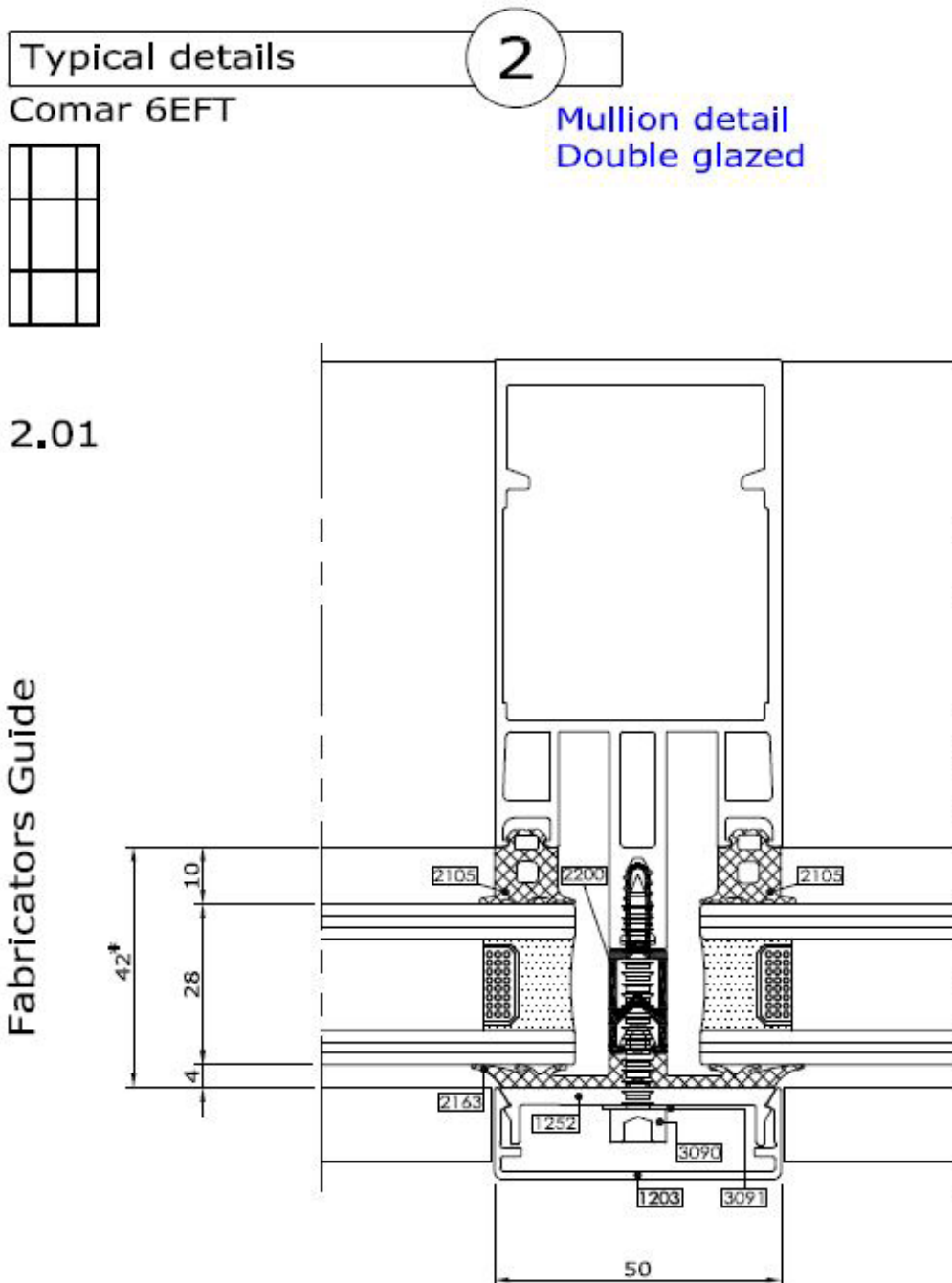
Changes reserved  
Sous reserve de modifications  
Änderungen vorbehalten

Issue: 05  
Date : 10 -16

  
**comar**  
ARCHITECTURAL ALUMINIUM SYSTEMS



2. CURTAIN WALLING SYSTEM  
 Supplier - Lancashire Shop fronts  
 Specification / Notes - Comar 6EFT  
 Colour - Black



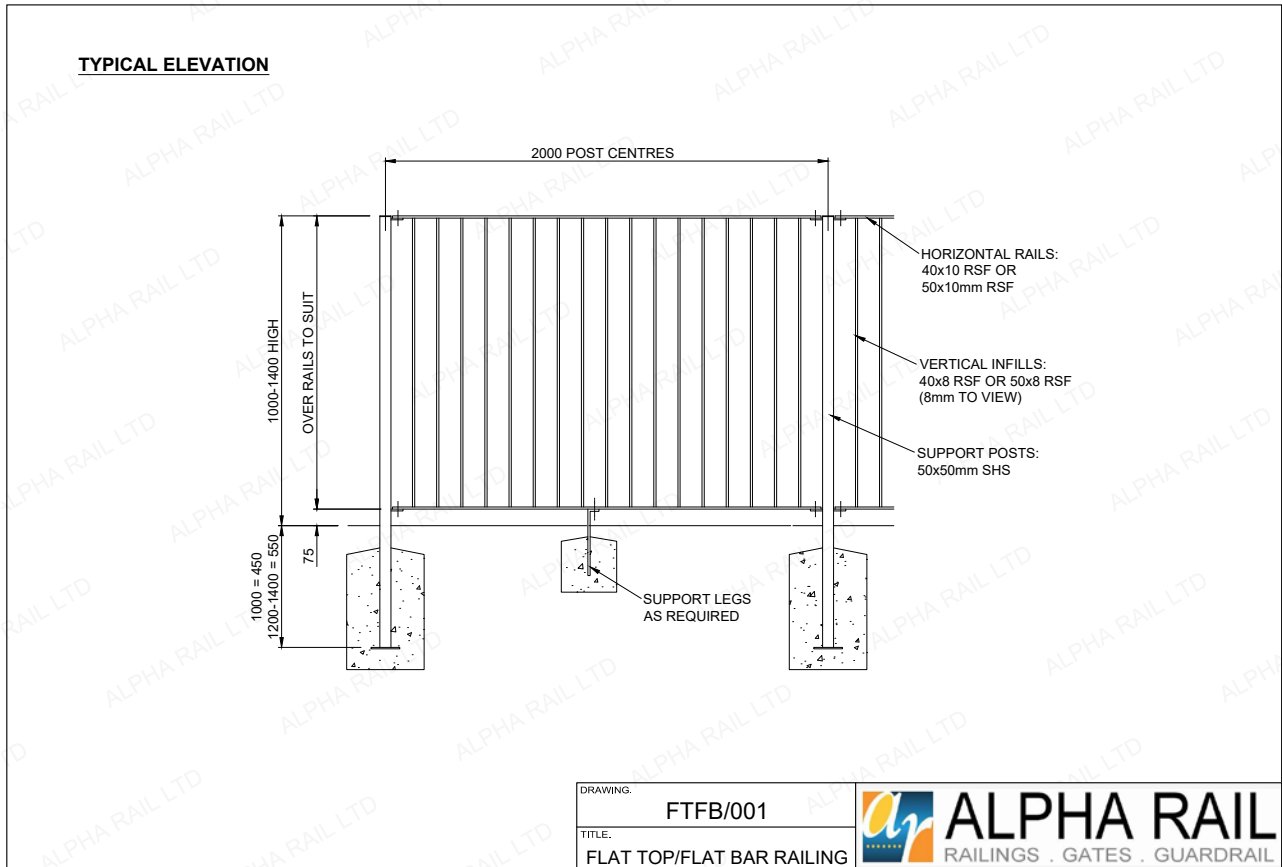
Copyright and ownership of this drawing is vested in EFT, Euro Facade Systems Ltd, whose prior written consent is required for its use, reproduction or for publication to any third party. All other rights reserved. Subject to modifications.

### 3. BALCONY RAILINGS

Supplier - Bespoke, Main build contractor

Specification / Notes - All railings to balconies to be made from flat bar profile steel

Colour - Black



## 4. SLIDING DOORS & WINDOWS

Supplier - A Plus Windows

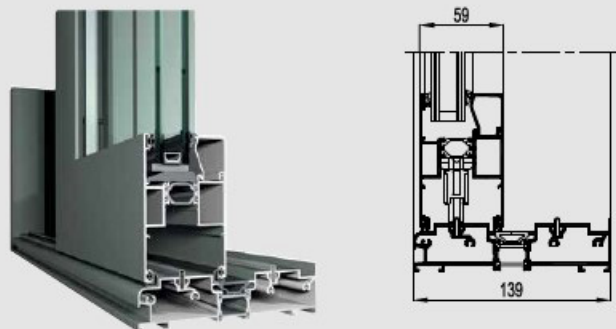
Specification / Notes - CP 130 Aluminium

Colour - Black



**CP 130**  
Aesthetic functionality

**R**  
**REYNAERS**  
aluminium



Concept Patio® 130 is a highly insulated slide and lift-slide system, which meets the highest requirements with regard to insulation, stability and safety.

CP 130 is available with various opening possibilities. The low threshold option offers a solution to improve the buildings accessibility. A special corner solution makes it possible to open up spaces without any fixed corner element, creating a perfect and clear continuity between the indoor and outdoor spaces. This makes CP 130 ideal for rooms with a view.

This robust system allows the construction of large and stable sliding windows and doors with a vent weight up to 300 kg. It also offers an aesthetical slimline middle section. Additionally, CP 130 can comply with burglar resistance class 2, offering a safe and secure solution.



## 5. TILING TO BALCONIES

Supplier - Tileco-online

Specification / Notes - Dorset red flats 150mm x 150mm Quarry tile to external floor, walls and ceilings

Colour - Red Quarry



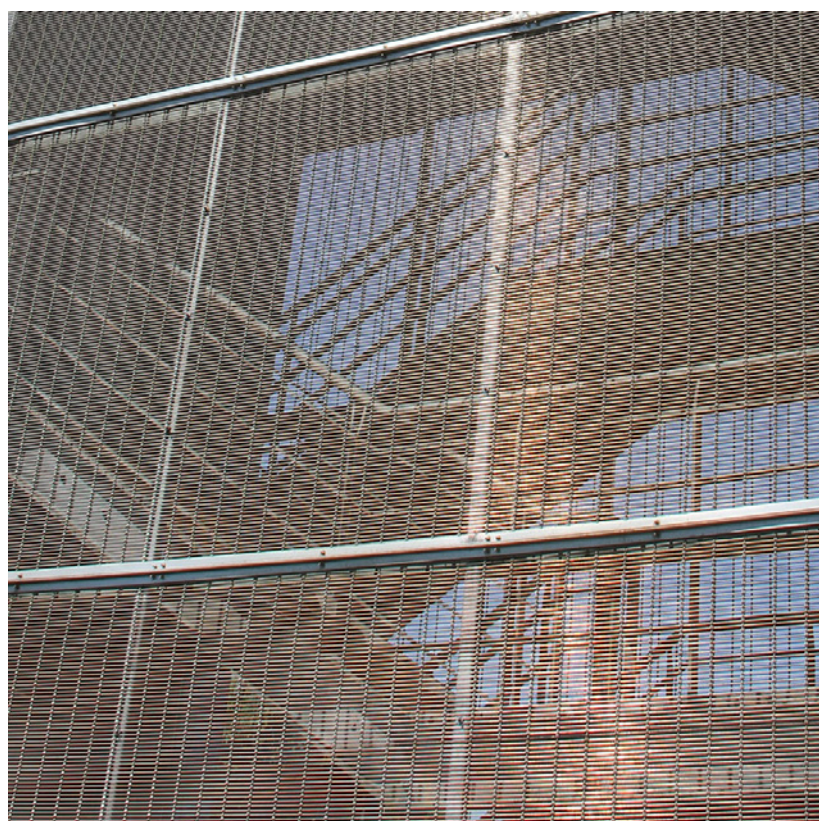
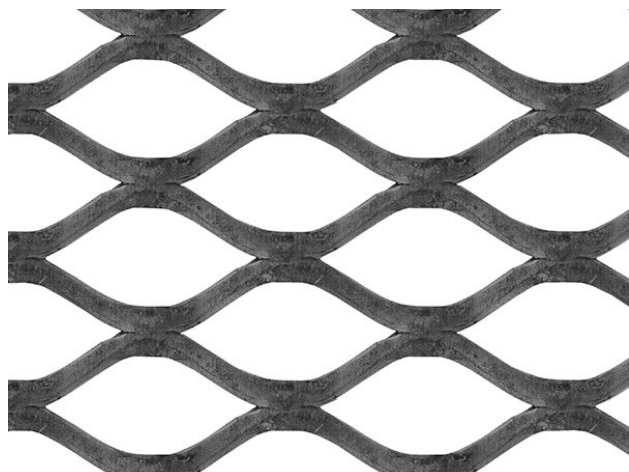


## 6. EXPANDED MILD STEEL

Supplier - F H Brundle

Specification / Notes - Expanded Mild Steel 2073F

Colour - Black



## 7. CURTAIN WALLING SYSTEM

Supplier - Lancashire Shop fronts

Specification - Comar 6EFT

Colour - Black

### ROOFING

## BOX PROFILE 32/1000 PVC Plastisol

Lighter with a lower profile and attractive appearance.

Cladco Profile 32/1000 trapezoidal, sometimes referred to as box profile single skin sheet gives robust sheet strength with 6 profiles of 200mm pitch across the sheet width and 32mm profile height. It's made from coated steel strip and gives 1000mm actual width cover when lapped.

Available in 0.7mm and 0.5mm sheet thickness, PVC Plastisol, Polyester paint finish and plain galvanised coated.



### Uses of 32/1000 Box Profile PVC Roof Sheets:

Our PVC Plastisol coated roofing sheets can be used for a range of uses. Profile roofing sheets can be used as a single skin sheeting or over clad of an existing roof or as part of a built-up insulated system.

### Benefits of 32/1000 Box Profile Roofing Sheets:

These sheets are highly economical and robust profile can be manufactured to your specific length requirements. They have been independently tested in line with current CE EN 14782.

SPECIFICATIONS	
Applications	Wall or Roof (Vertical or Horizontal)
External Finish	PVC Plastisol
Internal Finish	Light grey Polyester
External Face	Profiled 32/1000, 32mm profile height, 200mm pitch centres
Standard Width	1000mm when lapped
Max Length	9m
Minimum Pitch	4 degrees
Gauge Thickness	0.7mm
Weight	6.9kg/m2 approximately



**PLEASE NOTE** – Extra care should always be taken when handling metal sheets and flashings we advise using the correct type of Glove when handling or moving metal sheets and flashings.



01837 659901 [info@cladco.co.uk](mailto:info@cladco.co.uk)  
[www.cladco.co.uk](http://www.cladco.co.uk)

Beardown Road, Exeter Road Industrial Estate, Okehampton EX20 1UA

## 1. EXTERNAL PLANTERS

Supplier - Main Contractor

Specification - Blackened metal rectangular planters

Colour - Black



## 2. CONCRETE TILED FLOOR

Supplier - Main Contractor

Specification - Gridded cast concrete floor

Colour - Black





### 3. EXTERNAL WALL LIGHTS

Supplier - Nordlux

Specification - Nordlux rectangular external wall light

Colour - Galvanised

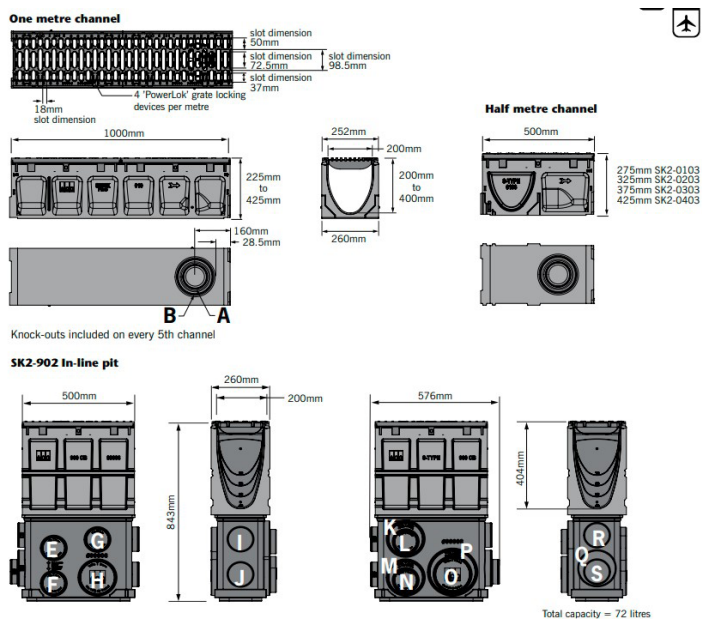
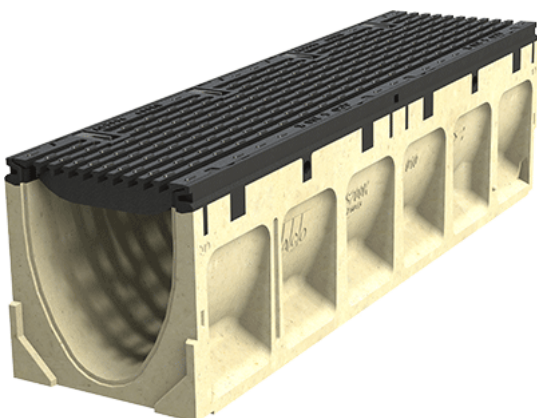


### 4. EXTERNAL ACO DRAIN

Supplier - ACO

Specification - Powerdrain s200K Load Class C-D

Colour - Black





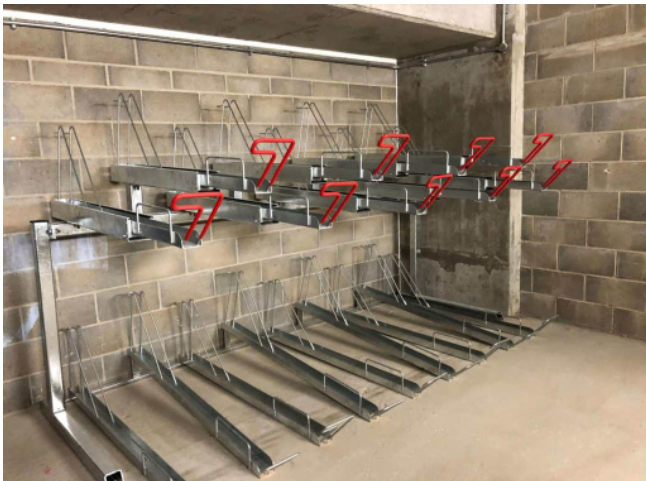
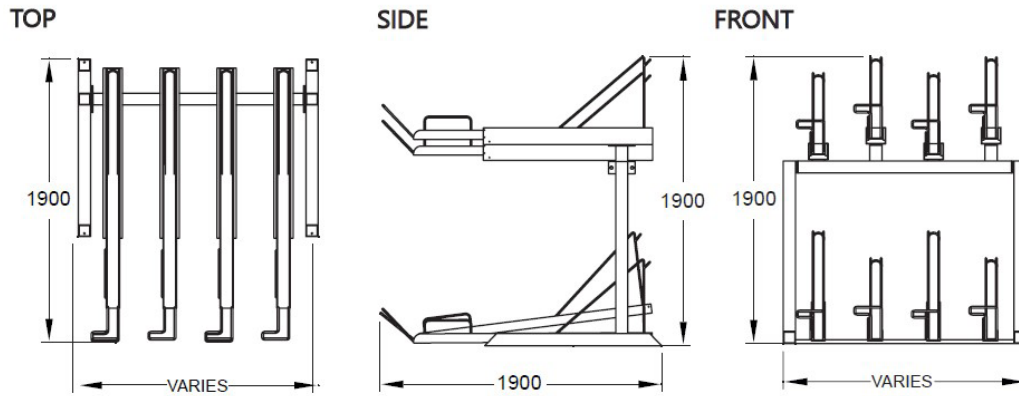
**1. BIKE STAND**

Supplier - The Bike Storage Company

Specification - Two Tier Bike Rack

Colour - Galvanised

Total: 4 (2 per bike dock, 8 bikes in total)



1. EXTERNAL BIN ENCLOSURE  
 Supplier - Lang and Fulton or similar  
 Specification - Europa Italia series  
 Colour - Black

