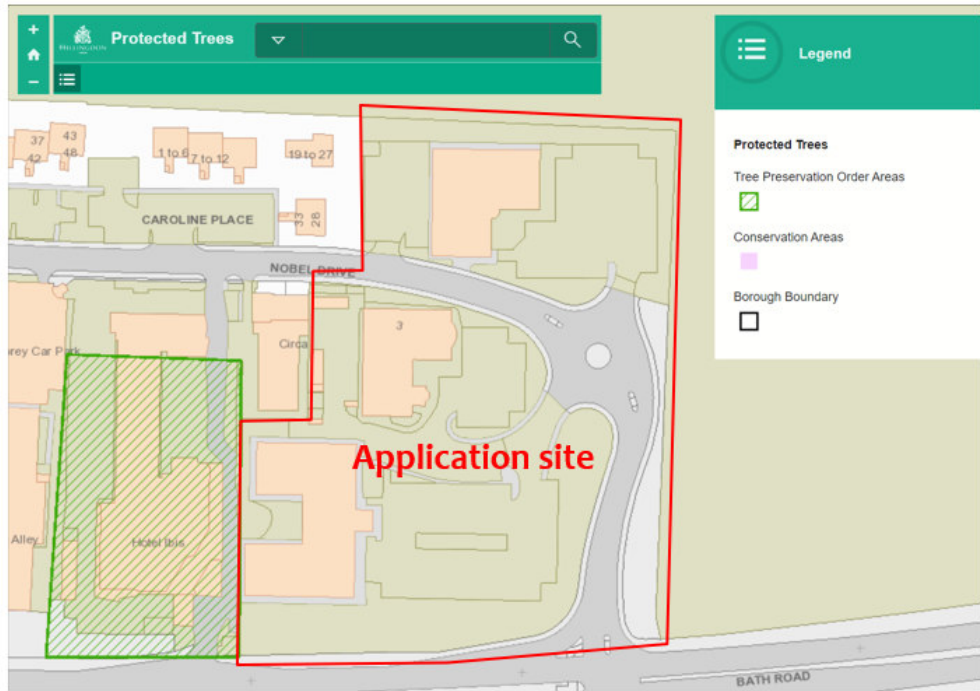


Photographs



Statutory Protection

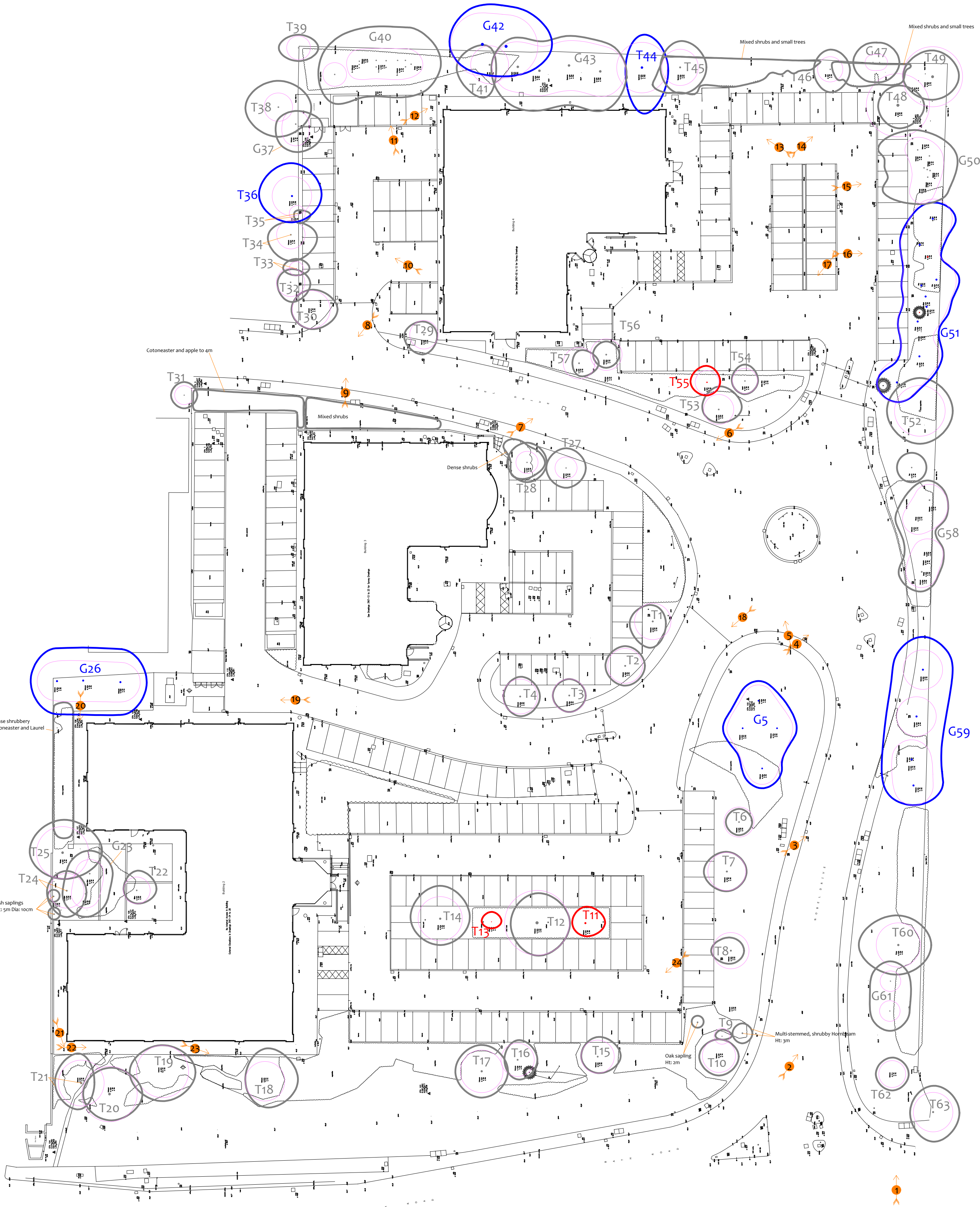
On the 13<sup>th</sup> January 2023, we accessed the local authority website. A screenshot is produced below:



This indicates that:

- The site is not within a conservation area.
- There are no tree preservation orders affecting trees within the site.
- There is a tree preservation order affecting trees immediately adjacent to the site. TPO Reference: 337.

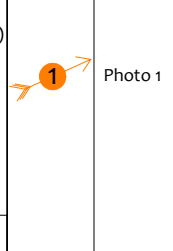
Drawing No: CCL10074B / TCP Rev: 1		Tree Retention Categories	
Title: Tree Constraints Plan (Existing Layout)		Category A tree	Trees of high quality with an estimated life expectancy of 40+ years. Usually large trees with significant presence or smaller trees with excellent form. Retention of these trees is highly desirable.
Site: Status Park, Nobel Drive, UB3 5EY		Category B tree	Trees of moderate quality with a life expectancy of 20+ years. Usually mature trees, or younger trees with good form. Retention of these trees is desirable though less than Category A trees.
Scale: 1:5000		Category C tree	Unremarkable trees of low quality and merit. Individual specimens are not considered to be a material planning consideration.
Paper Size: A1		Category U tree	Trees unsuitable for retention due to their very poor condition.



# Tree Constraints Plan

Status: Final

	B5 s837 Root Protection Area (radius = 1xstem diameter)
	Root Protection Area needing amendment due to site conditions, e.g. presence of existing road or building.
	Root Protection Area having been amended to account for site conditions
T1 = Tree No 1	G2 = Group No 2 H3 = Hedge No 3



**MN** = Measured North:  
Canopy spreads are sometimes measured to an approximate N defined by site features. Often more accurate, especially where rows of trees are not aligned N-S or E-W.

Tree Ref.	Species	Height (m)	Radius (m)	Area (sq m)
T1	Box Elder	4.5	2.8	24.4
T2	Norway Maple	5	2.8	22.4
T3	Norway Maple	4.5	2.5	20.4
T4	Norway Maple	4.5	2.6	22.4
G5	Norway Maple	4.5	2.4	18.4
T6	Norway Maple	4	2.3	16.4
T7	Norway Maple	5	2.9	26.4
T8	Box Elder	4.5	2.8	24.4
T9	Hornbeam	5	1.2	5.2
T10	Box Elder	4.5	2.5	20.4
T11	Box Elder	5	3.0	28.4
T12	Box Elder	6	4.9	76.4
T13	Box Elder	3	0.7	2.4
T14	Box Elder	5.5	3.4	36.4
T15	Norway Maple	6	2.5	20.4
T16	Norway Maple	6	2.5	20.4
T17	Norway Maple	6	3.2	33.4
T18	Norway Maple	7	3.0	28.4
T19	Norway Maple	7.5	4.0	49.4
T20	Norway Maple	6	4.2	55.4
T21	Norway Maple	5	3.5	38.4
T22	Italian Alder	8.5	2.0	13.4
G23	Cherry	5	2.2	15.4
T24	Cherry	5	2.8	22.4
T25	Cherry	8	4.0	49.4
G26	Norway Maple	8	3.0	28.4
T27	Apple	5	1.7	9.4
T28	Apple	5	1.7	9.4
T29	Apple	8.5	2.2	15.4
T30	Maple	6	2.9	26.4
T31	Ash	7	1.4	7.4
T32	Norway Maple	7	2.2	15.4
T33	Norway Maple	7	1.1	4.4
T34	Norway Maple	6	2.2	15.4
T35	Norway Maple	12	5	21.4
T36	Norway Maple	10	3.0	28.4
G37	Norway Maple	8	2.0	13.4
T38	Norway Maple	10	2.2	15.4
T39	Norway Maple	8	1.8	10.4
G40	Field Maple, Elder & Cherry	9	1.8	10.4
T41	Cherry	9	2.9	26.4
G42	Oak	11	4.8	72.4
G43	Field Maple	10	3.8	46.4
T44	Norway Maple	9	2.8	24.4
T45	Norway Maple	7	1.9	12.4
T46	Ash	7	1.9	12.4
G47	Oak & Hawthorn	6	1.2	5.2
T48	Ash	9	4.8	72.4
T49	Ash	6	4.6	65.4
G50	Field Maple, Elder & Cherry	7.5	1.9	12.4
G51	Pine	9	3.0	28.4
T52	Cherry	6	3.8	46.4
T53	Hedera/Birch	6	2.3	16.4
T54	Beech	7	1.9	12.4
T55	Beech	5.5	1.8	10.4
T56	Apple	6	2.4	18.4
T57	Apple	6	2.4	18.4
G58	Cherry	6	2.4	18.4
G59	Norway Maple	8.5	3.0	28.4
T60	Cherry	7.5	3.4	36.4
G61	Hornbeam	5	1.6	8.4
T62	Correlation Cherry	5.5	3.0	13.4
T63	Field Maple	7	3.0	28.4