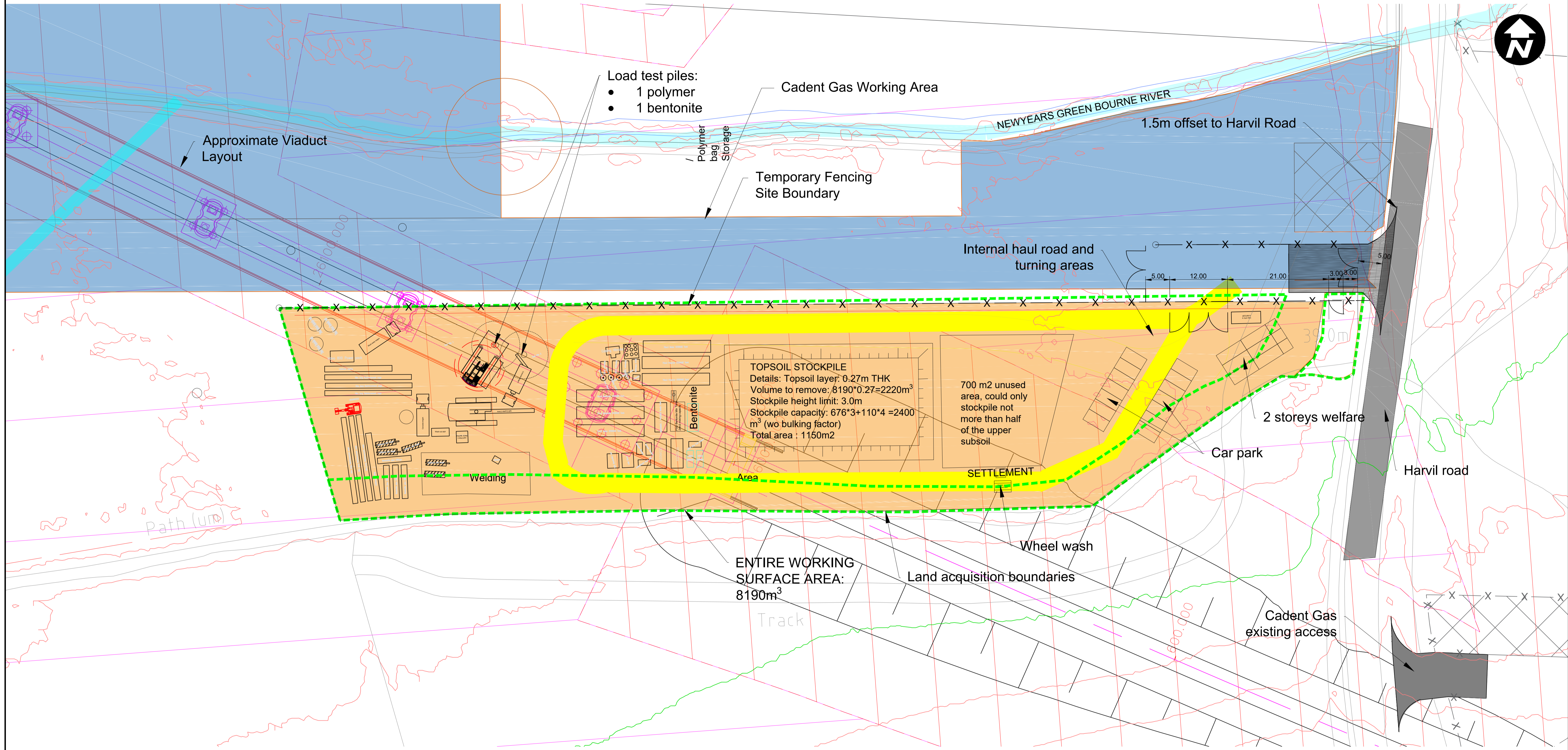
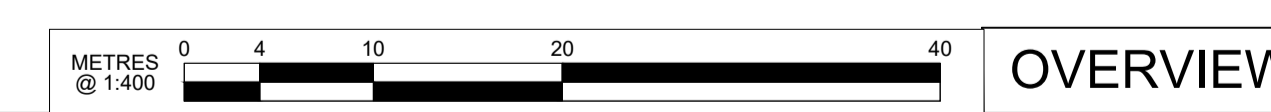


LOAD TEST PILE COMPOUND ARRANGEMENT PLAN VIEW



FOR INFORMATION



P01	First Issue	DL	DL	MK		<p>HS2 accepts no responsibility for any circumstances which arise from the reproduction of this document after alteration, amendment or abbreviation or if it is issued in part or issued incompletely in any way.</p> <p>© Crown Copyright and database right 2017. All rights reserved. Ordnance Survey Licence number 100049190</p> <p>© Crown Copyright material is reproduced with the permission of Land Registry under delegated authority from the Controller of HMSO.</p> <p>This material was last updated on 2017 and may not be copied, distributed, sold or published without the formal permission of Land Registry. Only an official copy of a title plan or register obtained from the Land Registry may be used for legal or other official purposes.</p>
Rev	Description	Drawn	Checked	Con App	HS2 App	Scale with caution as distortion can occur.

Legends/Notes:	
<p>ENTIRE WORKING SURFACE AREA: 8190m³</p>	

Registered in England
Registration No. 06791686
Registered office:
2 Snow Hill,
Queensway,
Birmingham, B4 6GA

OFFICIAL

Creator/Originator
ALIGN JV

Zone	COLNE VALLEY VIADUCT & SURFACE WORKS		Project/Contract	HS2 - 1MC05 CONTRACT	
Design Stage	SCHEME DESIGN		Discipline/Function TOWN AND COUNTRY PLANNING		
Drawing Title	WORKSITE 1 : HARVIL ROAD INDICATIVE SITE LAYOUT (FOR SCHEDULE 17)		Drawn	Checked	Approved
			D.Leroyer	D.Leroyer	M.Klein
	Date	Scale	Size		
	05/11/18	1:400	A1		
Code	Suitability	Drawing No.		Rev.	
S2	Suitable for Information	1MC05-ALJ-TP-DGA-CS01_CL01-803001		P01	