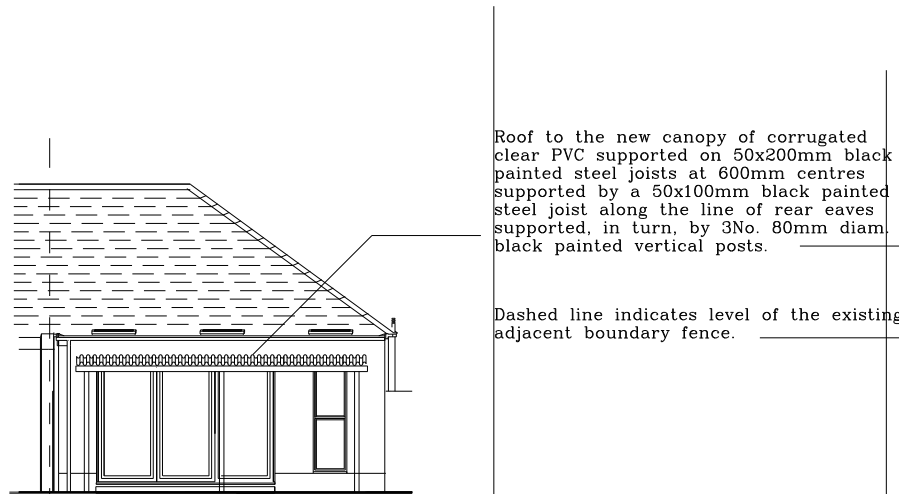


ELEVATIONS+SECTION AS PROPOSED



REAR ELEVATION
AS PROPOSED

Roof to the new canopy of corrugated clear PVC supported on 50x200mm black painted steel joists at 600mm centres supported by a 50x100mm black painted steel joist along the line of rear eaves supported, in turn, by 3No. 80mm diam. black painted vertical posts.

Dashed line indicates level of the existing adjacent boundary fence.

Roof construction supported by 3No.80mm diameter vertal posts painted black gloss.

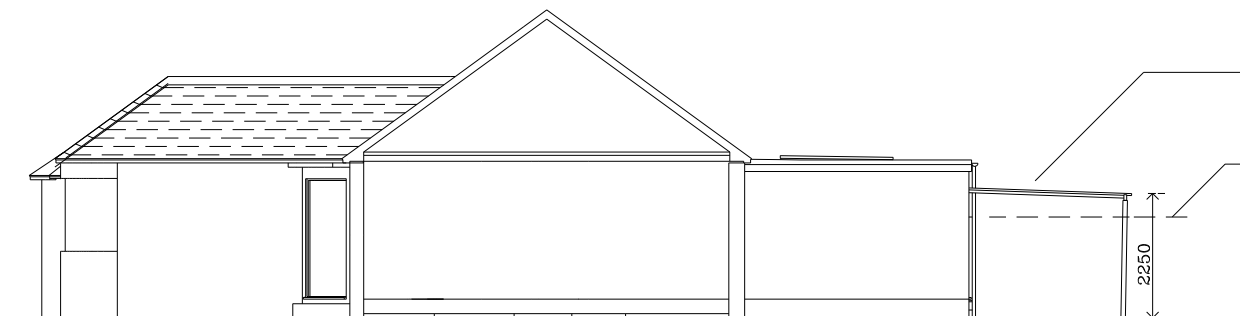


SOUTH (FLANK) ELEVATION
AS PROPOSED

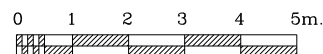
Roof to the new canopy of corrugated clear PVC supported on 50x200mm black painted steel joists at 600mm centres supported by a 50x100mm black painted steel joist along the line of rear eaves supported, in turn, by 3No. 80mm diam. black painted vertical posts.

Dashed line indicates level of the existing adjacent boundary fence.

Roof construction supported by 3No.80mm diameter vertal posts painted black gloss.



LONG SECTION
AS PROPOSED



REVISION :

SHEET TITLE
150, PAVILION WAY,
HILLINGDON HA4 9JP.

SINGLE STOREY CANOPY TO
THE REAR OF HOUSE

ELEVATIONS+SECTION
AS PROPOSED (PLANNING)

SCALE :	1:100 @A3	STATUS.	
DATE :	OCT'2023	PRELIMINARY	
DRAWN BY :	C.L.	COMMENT/APPROVAL	X
CHECKED :	C.L.	INFORMATION	
		TENDER	
		CONSTRUCTION	

DO NOT SCALE - VERIFY ALL DIMENSIONS ON SITE AND
REPORT ALL ERRORS/OMISSIONS TO ARCHITECT BEFORE
COMMENCING WORK. IF IN DOUBT - PLEASE ASK.

DRAWING NUMBER : 22316/ 08 REV.

CHRIS LAWES ARCHITECT

THE STUDIO,
9, MARBLE HILL CLOSE, TWICKENHAM, MDDX, TW1 3AY
TELEPHONE 020.8891.0056 FAX 020.8607.9843