



CROWN TRADING CENTRE – DESIGN ADJUSTMENTS
PLANNING ISSUE

GREYSTAR

JJ Rhatigan
Building Contractors



**FRANK
REYNOLDS
ARCHITECTS**

INTRODUCTION

During the detailed design of the buildings, small adjustments have been made in order to reflect emerging legislation (notably fire legislation), introduced through quality improvements in building products, correct some small inconsistencies in the consented scheme, and as a result of feedback from third parties (notably the police). During these changes we have at all times maintained the vision established in the consented scheme. This report describes as simply as possible what those changes are.

CONTENTS

Core Amendments	p03
‘Brick Slot’ Amendments	p06
Balcony Amendments	p09
Window Amendments	p12
Metal Panel Amendments	p16
Metal Stair Omission	p19



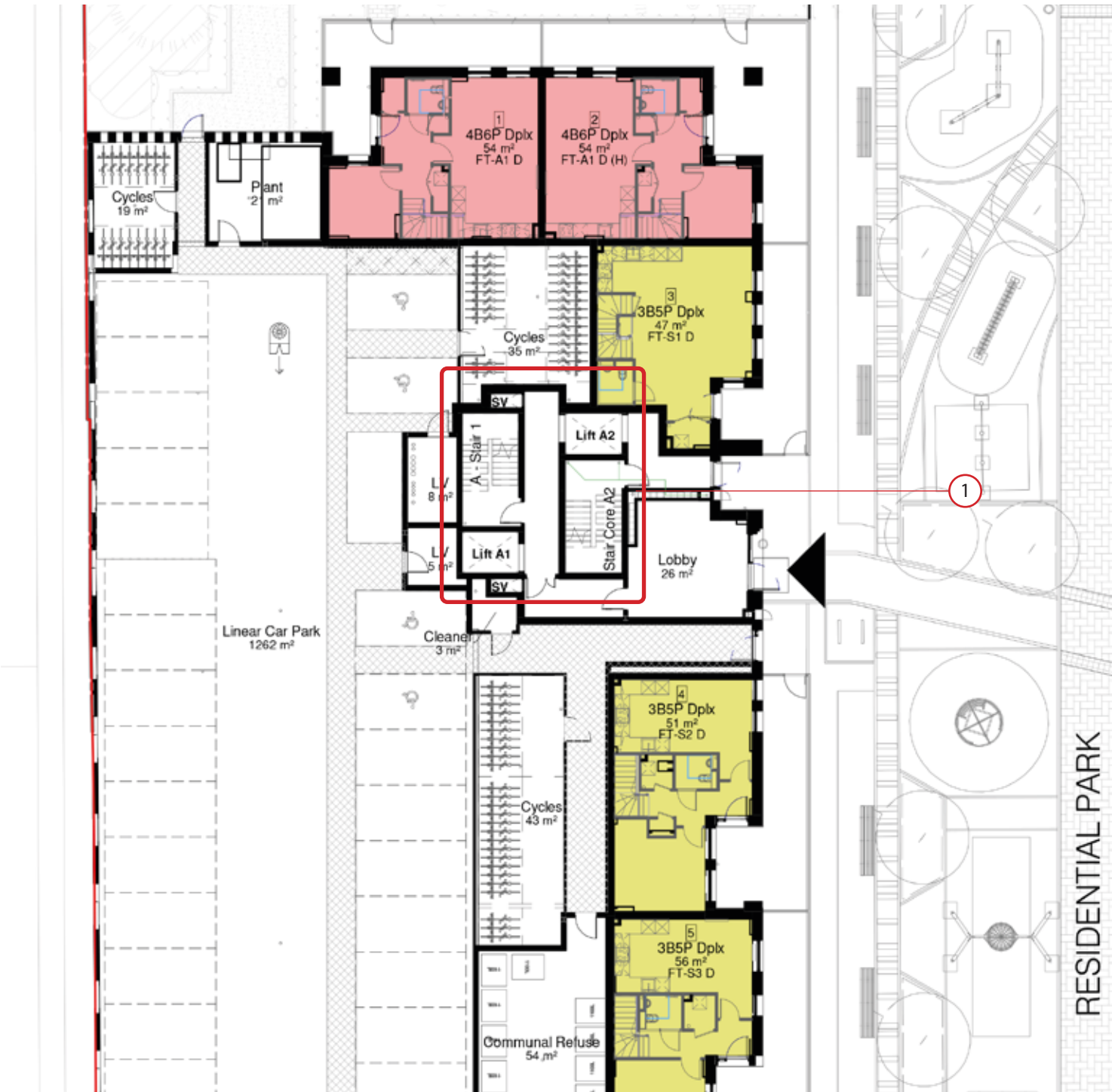
CORE AMENDMENTS

CORE AMENDMENTS

CONSENTED TYPICAL GROUND FLOOR PLAN



PROPOSED TYPICAL GROUND FLOOR PLAN

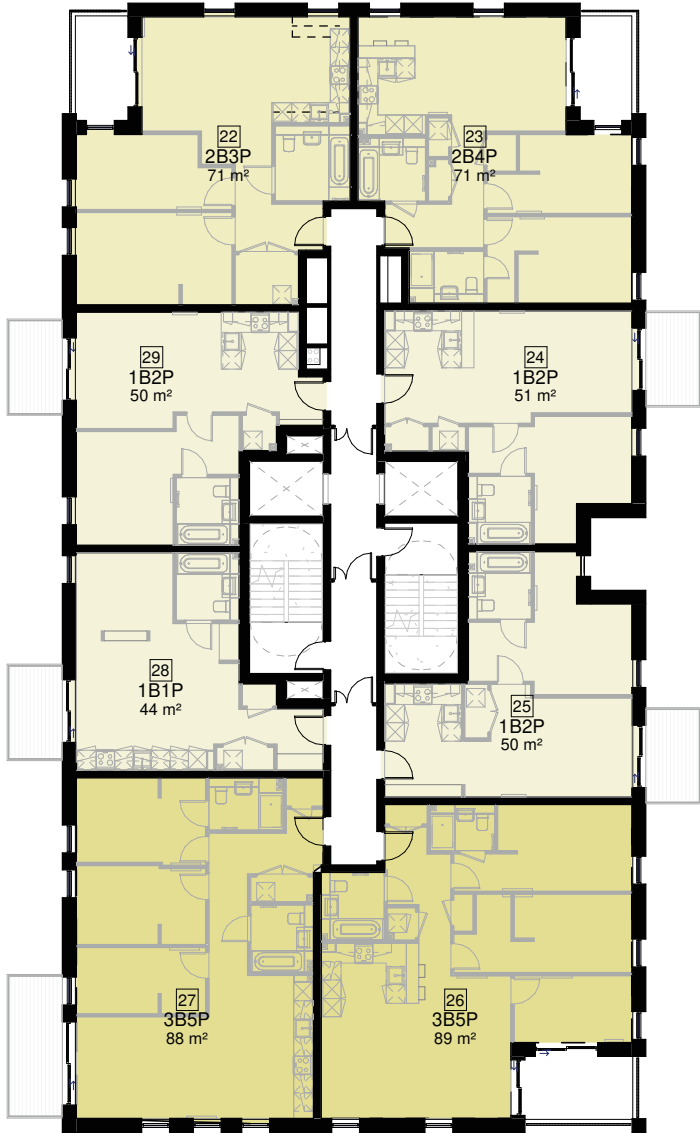


Summary of Changes

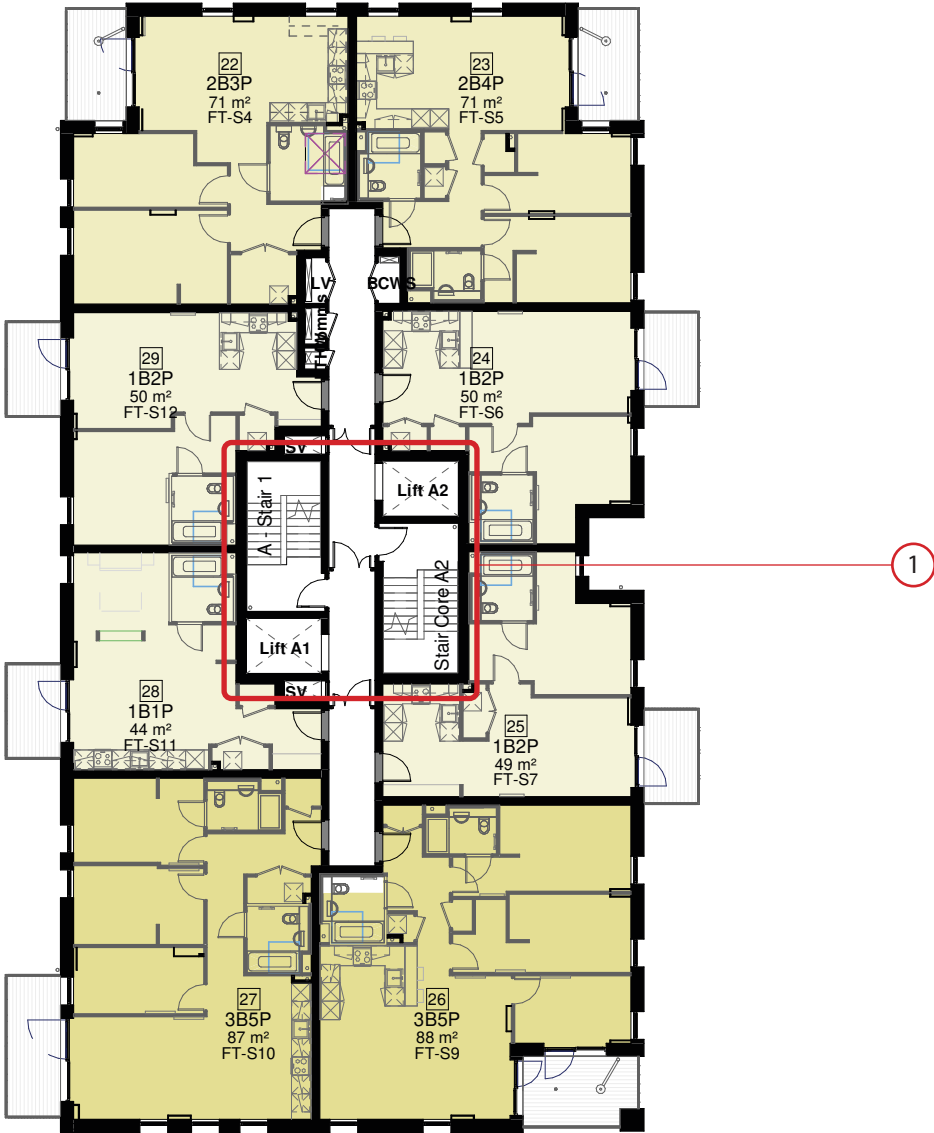
- 1. Lift and stair positions amended, and fire door added to comply with emerging fire regulations.

CORE AMENDMENTS

CONSENTED TYPICAL UPPER FLOOR PLAN



PROPOSED TYPICAL UPPER FLOOR PLAN



Summary of Amendments

- 1. Lift and Stair positions amended to comply with emerging fire regulations

'BRICK SLOT' AMENDMENTS

'BRICK SLOT' AMENDMENTS

CONSENTED GA ELEVATION - WEST ELEVATION CF



PROPOSED GA ELEVATION - WEST ELEVATION CF



Summary of Amendments

1. In order to give better modulation to the façade, and to accommodate a manufacturing issue for bolt-on balconies, we have removed the brickwork from each floor level in this vertical band. This allows the recess to be read more clearly, and brings a better depth to the composition as a whole.

'BRICK SLOT' AMENDMENTS

CONSENTED GA ELEVATION - EAST ELEVATION CF



PROPOSED GA ELEVATION - EAST ELEVATION CF



Summary of Amendments

1. In order to give better modulation to the façade, and to accommodate a manufacturing issue for bolt-on balconies, we have removed the brickwork from each floor level in this vertical band. This allows the recess to be read more clearly, and brings a better depth to the composition as a whole.

BALCONY AMENDMENTS

BALCONY AMENDMENTS

CONSENTED GA ELEVATION - WEST ELEVATION BE



PROPOSED GA ELEVATION - WEST ELEVATION BE



Summary of Amendments

1. During detailed design it has been necessary to slightly move the balconies to prevent reinforcement clash with columns within the building. They have been moved as little as possible and in no way affect the architecture of the buildings.

BALCONY AMENDMENTS

CONSENTED GA ELEVATION - WEST ELEVATION AD (PODIUM)



PROPOSED GA ELEVATION - WEST ELEVATION AD (PODIUM)



Summary of Amendments

1. During detailed design it has been necessary to slightly move the balconies to prevent reinforcement clash with columns within the building. They have been moved as little as possible and in no way affect the architecture of the buildings.