

ADVISORY NOTES

- DO NOT SCALE FROM THIS DRAWING
- ALL DIMENSIONS TO BE CHECKED ON SITE
- ANY DISCREPANCIES SHOULD BE REPORTED TO THE ARCHITECT / CONTRACT ADMINISTRATOR

COM REGULATIONS

ALL CURRENT DRAWINGS, SCHEDULES AND SPECIFICATIONS FOR THIS PROJECT ARE TO BE READ IN CONJUNCTION WITH THE PROJECT SPECIFIC DESIGNERS RISK ASSESSMENT DOCUMENT

PRODUCT SPECIFICATION

ALL NAMED BUILDING PRODUCTS (E.G. ANCON ST1 WALL TIE) MUST BE INSTALLED IN ACCORDANCE WITH MANUFACTURERS RECOMMENDATIONS, TEST CERTIFICATES, RELATIVE AGREEMENTS AND PROJECT SPECIFIC REQUIREMENTS

WHERE GENERIC PRODUCTS ARE SPECIFIED OR ANNOTATED ON THE DRAWINGS, THE CONTRACTOR IS RESPONSIBLE FOR ENSURING COMPATIBILITY AND SUITABILITY OF THE SELECTED PRODUCT OR SYSTEM

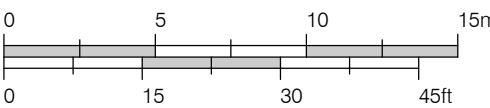
EXTERNAL FACADE MATERIALS

ALL MATERIALS USED IN THE EXTERNAL FACADE ARE TO BE OF **EUROPEAN CLASSIFICATION A2-s1,dl OR A1** IN ACCORDANCE WITH BS EN 13501-1:2007+AT:2009 UNLESS IDENTIFIED AS ONE OF THE EXEMPTIONS AS LISTED IN REGULATION 7 OF APPROVED DOCUMENT B.

MEMBRANES USED AS PART OF THE EXTERNAL WALL CONSTRUCTION ABOVE GROUND LEVEL SHOULD ACHIEVE A **MINIMUM OF CLASS B-S1-d2**

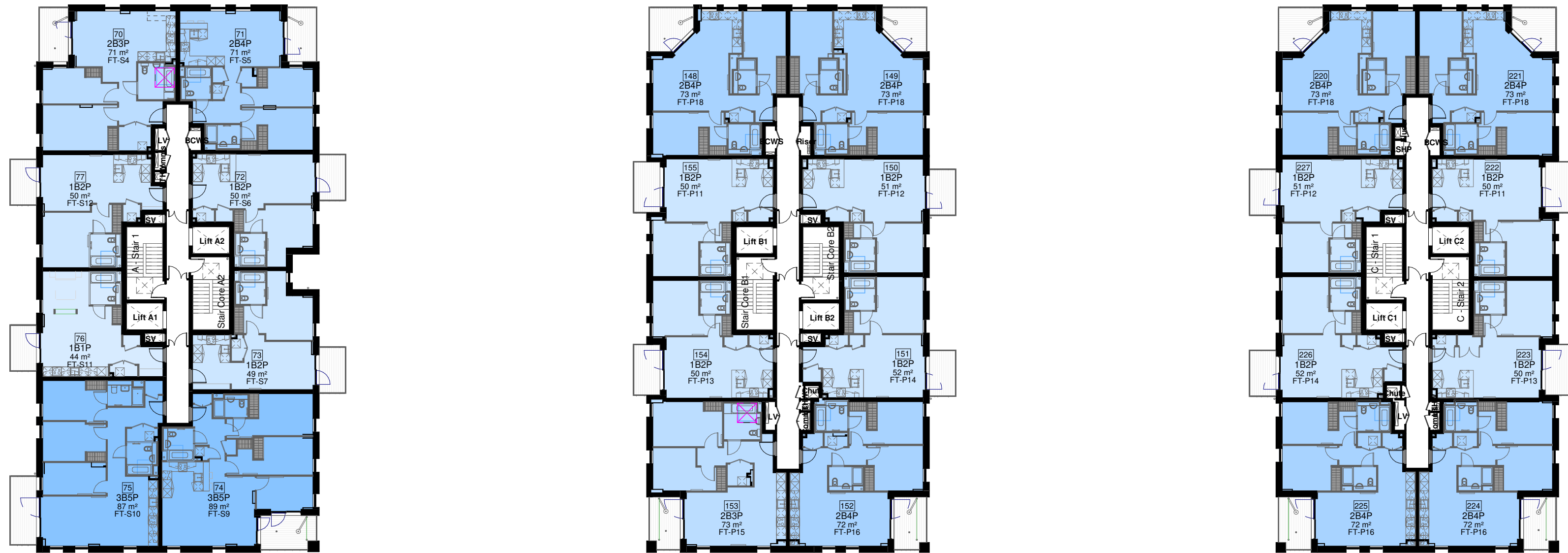


Scale 1:250



Legend

- 1B1P Pfs
- 1B2P Pfs
- 2B3P Pfs
- 2B4P Pfs
- 3B5P Pfs



P04	24.07.2024	Planning Amendments
P03	15.08.2022	2 Stair Redesign - S73 Submission V2
P02	06.08.2021	Section 73 Submission
P01	04.06.2020	Updated to LBH Comments

Rev	Date	Description	©
-----	------	-------------	---



**FRANK  
REYNOLDS  
ARCHITECTS**

22C Shephardes Walk, London N1 7LB

T: +44 (0)20 7812 8454

CLIENT

JJ Rhatigan



PROJECT

Crown Trading Centre

DRAWING NAME  
**Ninth Floor Plan**

STATUS	PLANNING	DATE	Aug 2022
DRAWN	CHECKED	SCALE	SIZE
AD	CP	1 : 250	A1
JOB NO.	DRAWING NO.	REV	
1140	PL009	P04	
CTC-FRA-A-PL009			