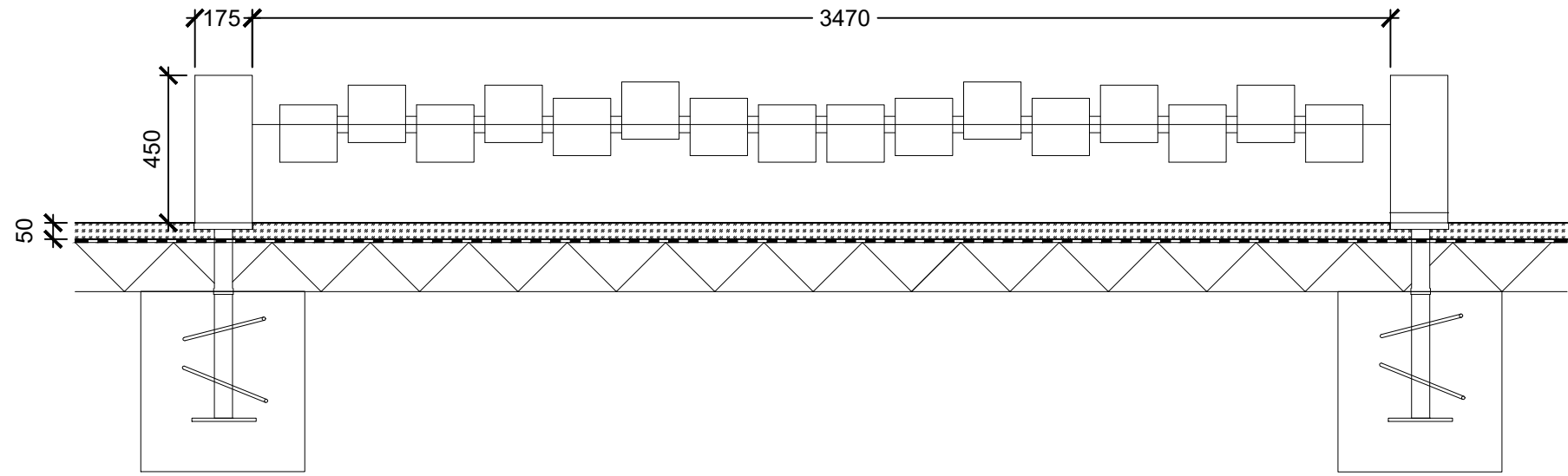


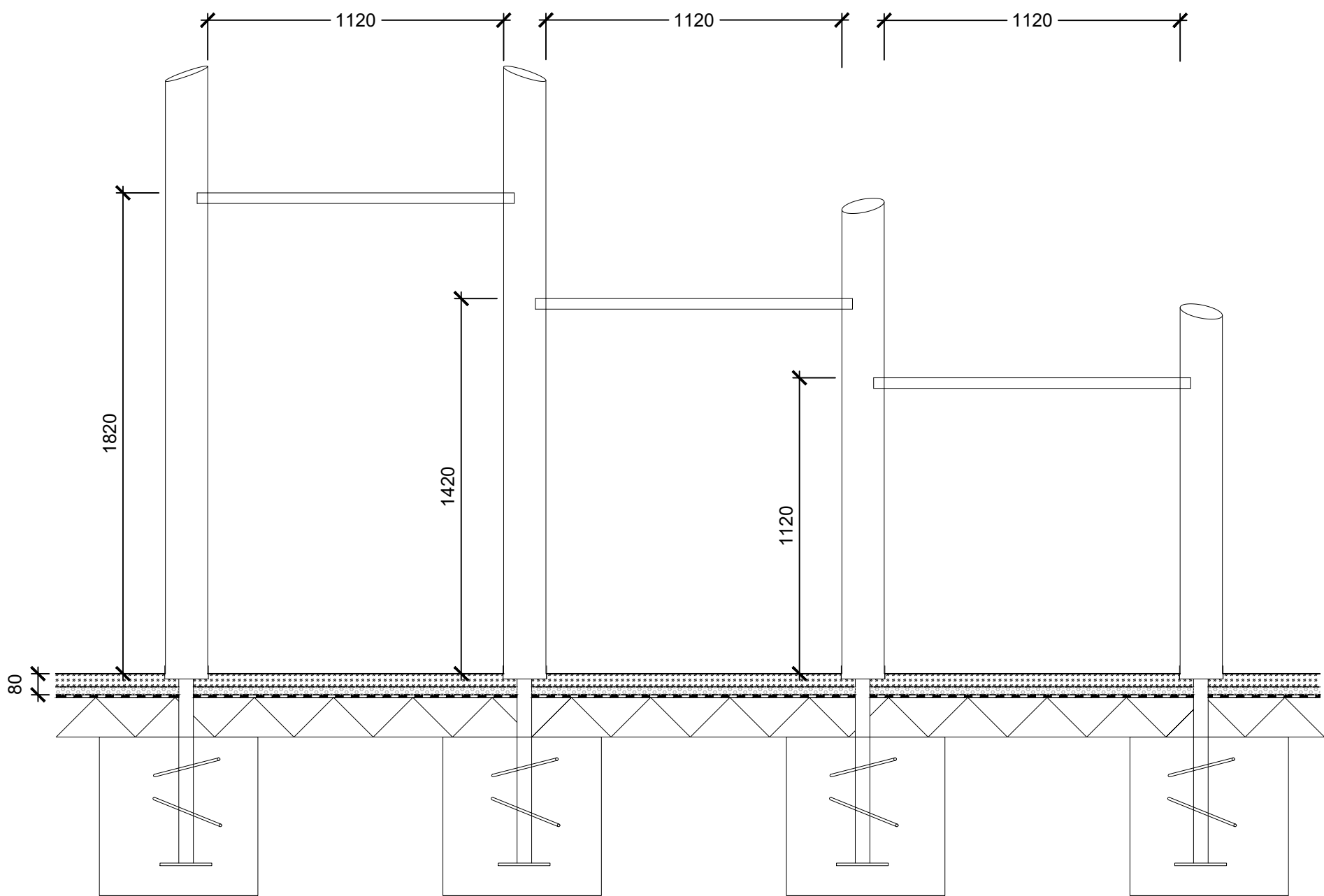
R1
2065 CLIMBING WALL

Quantity: 1Nos.
Ref: Climbing wall with 2 elements (Ref: 7.77010)
Fixing: Galvanised metal ground anchors for in-ground fixing. Foundation strictly to manufacturer's instructions. Top of foundation to be 150mm (minimum) below surface level.
CFH: 2m
Supplier: TIMBERPLAY LTD, Aizlewood's Mill, Nursery Street, Sheffield, S3 8GG
Safety Surface: 80mm depth Tiger Mulch by Star Rubber Ltd or similar approved
Two stage rubber safety surface:
a. Surface course of 50mm x Tiger mulch (Earth tone 1)
b. Base course of 30mm x 2-6mm SBR Rubber crumb



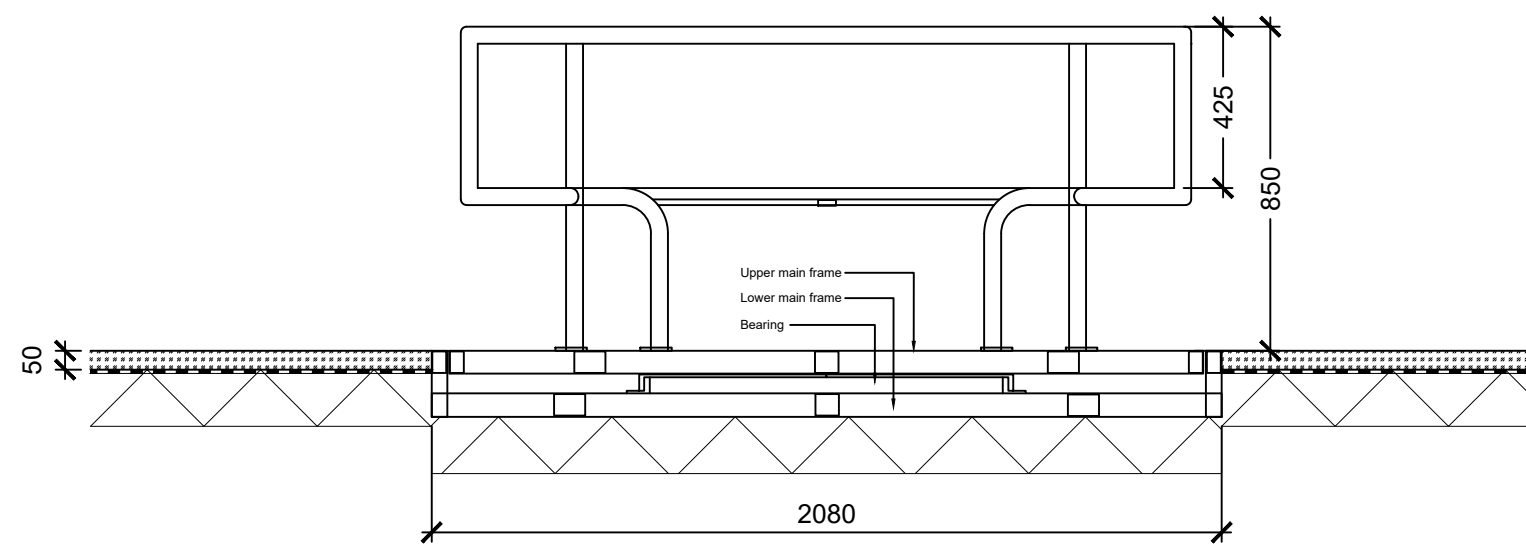
R2
2065 BALANCE BLOCKS

Quantity: 1Nos.
Ref: Balance blocks (Ref: 6.51700)
Fixing: Steel feet underground fixing. Foundation strictly to manufacturer's instructions. Top of foundation to be 150mm (minimum) below surface level.
CFH: s0.60m
Supplier: TIMBERPLAY LTD, Aizlewood's Mill, Nursery Street, Sheffield, S3 8GG
Safety Surface: 50mm depth Tiger Mulch by Star Rubber Ltd or similar approved
Surface course of 50mm x Tiger mulch (Earth tone 1)



R3
2065 HORIZONTAL BARS

Quantity: 1Nos.
Ref: Horizontal bars (Ref: L6.96000)
Fixing: Galvanised metal ground anchors for in-ground fixing. Foundation strictly to manufacturer's instructions. Top of foundation to be 150mm (minimum) below surface level.
CFH: 2m
Supplier: TIMBERPLAY LTD, Aizlewood's Mill, Nursery Street, Sheffield, S3 8GG
Safety Surface: 80mm depth Tiger Mulch by Star Rubber Ltd or similar approved
Two stage rubber safety surface:
a. Surface course of 50mm x Tiger mulch (Earth tone 1)
b. Base course of 30mm x 2-6mm SBR Rubber crumb



R4
2065 WHEELSPIN ROUNDABOUT

Quantity: 1Nos.
Ref: Wheelspin roundabout (Ref: IP12)
Material: Galvanised, powder coated steel with HDPE seatback
Fixing: Galvanised metal in-ground frame. Foundation strictly to manufacturer's instructions.
CFH: s1.00m
Supplier: Jupiter Play & Leisure, 23 Rectory Rd, West Bridgford, Nottingham NG2 6BE, info@jupiterplay.co.uk
Note: All to Manufacturers guidance.
Safety Surface: 50mm depth Tiger Mulch by Star Rubber Ltd or similar approved
Surface course of 50mm x Tiger mulch (Earth tone 1)

notes

- The contractor is responsible for checking dimensions, tolerances and references. Any discrepancy to be verified with the Architect before proceeding with the works.
- Where an item is covered by drawings to different scales the larger scale drawing is to be worked to.
- Do not scale drawing. Figured dimensions to be worked to in all cases.

CDM Regulations 2015

ALL current drawings and specifications for the project must be read in conjunction with the Designer's Hazard and Environmental Assessment Record.

| | | |
|-----|---------------------|----------|
| | | |
| | | |
| P1 | ISSUED FOR PLANNING | 13.02.23 |
| REV | AMENDMENT | DATE |

Client:
GREYSTAR

GREYSTAR™
The Global Leader in Rental Housing

Project:
CROWN TRADING CENTER, HAYES, LONDON

Title:
DETAILS - PLAY 01

Scale:
1:20 | A1

Date: FEB 2023
Drawn: DT
Checked: PW



L.D.A.
LANDSCAPE DESIGN ARCHITECTURE
17a Cannon Hill Rd
Coventry
CV4 7AZ
Tel: 02476 696666 Mob: 07977 483787
info@landscapearchitect.co.uk

Drawing no. L1115 - 3.1 - 2065

Job no. L1115

Revision. P1