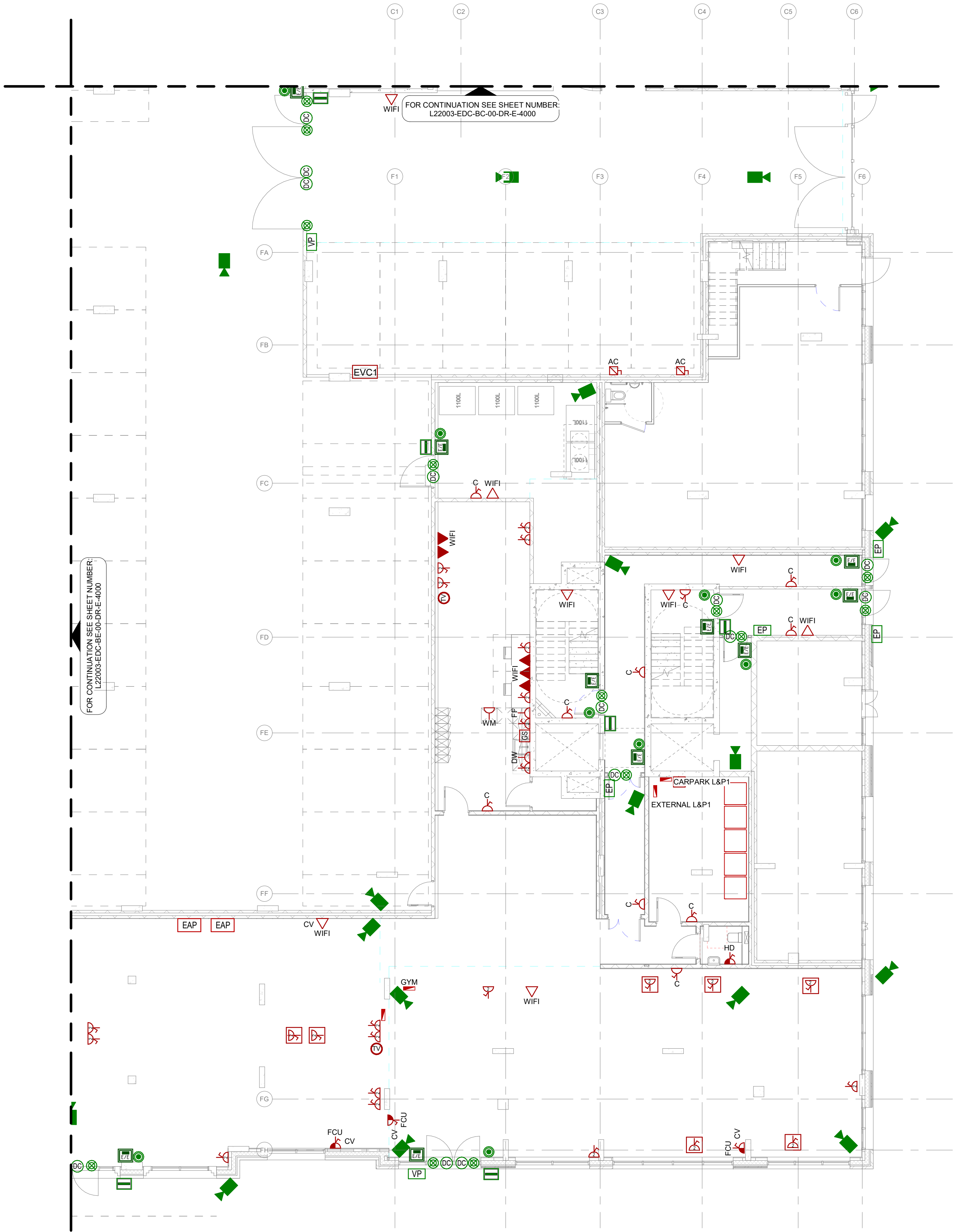


ELECTRICAL SERVICES ARE TO BE CO-ORDINATED WITH INTERIOR DESIGN LAYOUT



1 Block F - Ground Floor - General Services Layout  
1 : 100

NOTES

1. THIS DRAWING IS TO BE READ IN CONJUNCTION WITH ALL DRAWINGS, SPECIFICATION, SCHEDULES ETC. PRODUCED BY THE MEP CONSULTANTS AND WIDER DESIGN TEAM.
2. ALL DIMENSIONS IN MILLIMETERS UNLESS OTHERWISE STATED.
3. DO NOT SCALE. WORK TO MEASURED DIMENSIONS ONLY. ALL DIMENSIONS & LEVELS ARE TO BE CHECKED BY THE CONTRACTOR ON SITE PRIOR TO WORK COMMENCING.
4. THE INFORMATION ON THIS DRAWING IS INDICATIVE ONLY OF THE DESIGN INTENT. THE CONTRACTOR SHOULD USE THIS AS A BASIS ONLY FOR THE DESIGN DEVELOPMENT & PRODUCTION OF WORKING DRAWINGS FOR SITE USE.
5. ANY DISCREPANCIES, ERRORS OR OMISSIONS ARE TO BE CLARIFIED WITH THE RELEVANT ENGINEER AT THE EARLIEST OPPOTUNITY.
6. ALL WORKS ARE TO BE IN ACCORDANCE WITH THE CURRENT RELEVANT REGULATIONS, BUILDING REGULATIONS, BRITISH STANDARDS, ACCEPTED CODES OF PRACTICE & TRADE ASSOCIATION REQUIREMENTS.
7. IT IS THE ELECTRICAL CONTRACTOR'S RESPONSIBILITY TO LIAISE WITH THE MAIN CONTRACTOR & ALL OTHER TRADES TO ENSURE THE CO-ORDINATION OF WORKS TO SUIT PROGRAM CONTRACTS & AVOID CLASHES.
8. ACCESS STRATEGY TO BE AGREED BY ARCHITECT.
9. PLEASE REFER TO ELECTRICAL SERVICES RISER LAYOUT DRAWING FOR EQUIPMENT, DATA AND POWER SUPPLY REQUIREMENTS.

LEGEND

- LLDB LANDLORDS TPN DISTRIBUTION BOARD
- RY RYEFIELD BOARD
- MAIN PANELBOARD
- MCP MECHANICAL CONTROL PANEL
- UNSWITCHED FUSED SPUR
- GSM UNSWITCHED FUSED SPUR (GLOBAL SYSTEM FOR MOBILE)
- SWITCHED FUSED CONNECTION UNIT
- C CLEANERS SOCKET OUTLET
- 13A TWIN SWITCHED OUTLET
- 13A SINGLE SWITCHED OUTLET
- 13A SINGLE UNSWITCHED OUTLET
- 13A TWIN SWITCHED SOCKET FLOOR MOUNTED
- COMMANDO SOCKET
- SPN ISOLATOR
- TPN ISOLATOR
- P PANIC BUTTON
- D/T DATA / TELEPHONE OUTLET
- WIFI WIFI ACCESS POINT
- TWIN DATA OUTLET
- TV POINT
- EVACUATION ALERT SOUNDER
- VEP VEHICLE ENTRY
- EP AUDIO ENTRY PHONE
- VP VIDEO ENTRY PHONE
- EAP EVACUATION ALARM PANEL
- DC DOOR CONTACT
- CCTV CAMERA
- ELECTRIC STRIKE / MAGLOCK
- EMERGENCY DOOR RELEASE BREAK GLASS UNIT
- DOOR RELEASE & EMERGENCY EXIT BUTTON
- PROXIMITY FOB READER
- E/E DOOR RELEASE EXIT BUTTON

T01	09.09.2022	STAGE 3 ISSUE	JM	JT
Rev	Date	Description	Orig	App



Name of Job  
CROWN TRADING CENTRE HAYES

Title of Drawing  
BLOCK F - GROUND FLOOR - GENERAL SERVICES LAYOUT

Drawing No:  
L22003-EDC-BF-00-DR-E-4000

Scale @ A1	Model Manager	Project Manager
1 : 100	RT	JT

**EDC**

**Mechanical & Electrical Consulting Engineers**

Cork Office  
Tel: +353 (0)21 4280476,  
email: info@edcengineers.com

Dublin Office  
Tel: +353 (0)1 5313693,  
email: info@edcengineers.com

London Office  
Tel: +44 (0)203 0040062  
www.edcengineers.com