



Crown Trading Centre

External Materials Document

Revision PL1 - 05.12.2023

JJ Rhatigan
Building Contractors

EXTERNAL MATERIALS

The primary external material palettes have been identified in the DAS.

During stage 3 the preferred primary material options have been defined as;

- 1. Red Brick (used mainly on Buildings A,B,C) - **Albion** by Michelmersch
- 2. Black Brick (used mainly on Buildings D,E,F) - **Anthracite Handmade** by AAB
- 3. White Brick (used mainly on Buildings D,E,F) - **Perla** by Vandersanden
- 4. Cladding to setback stories of Buildings D,E,F - **Valcan Natural + texture Raw - 2031 Compressed Fibre cement panel with secret fix**
- 5. All PPC metalwork to windows, curtain walling, railings, copings etc. to be in **matt PPC finish in RAL 9004 'Signal Black'**



EXTERNAL MATERIALS

RED BRICK - BUILDINGS A,B,C



Michelmersh Floren.be 'ALBION'



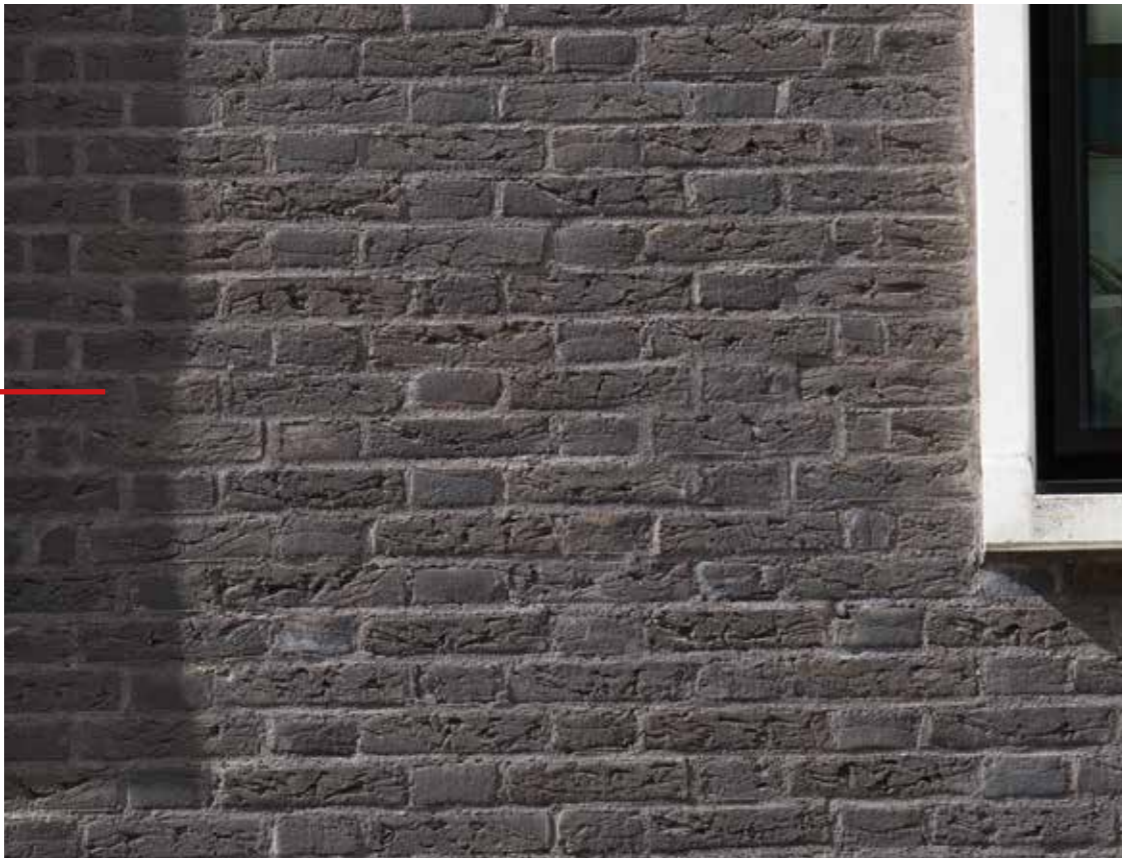
Nearest precedent scheme -

Langley Square, Mill Pond, Kent

EXTERNAL MATERIALS

DARK BRICK - BUILDINGS D,E,F

2. —



Anthracite Handmade by AAB



Nearest precedent scheme -

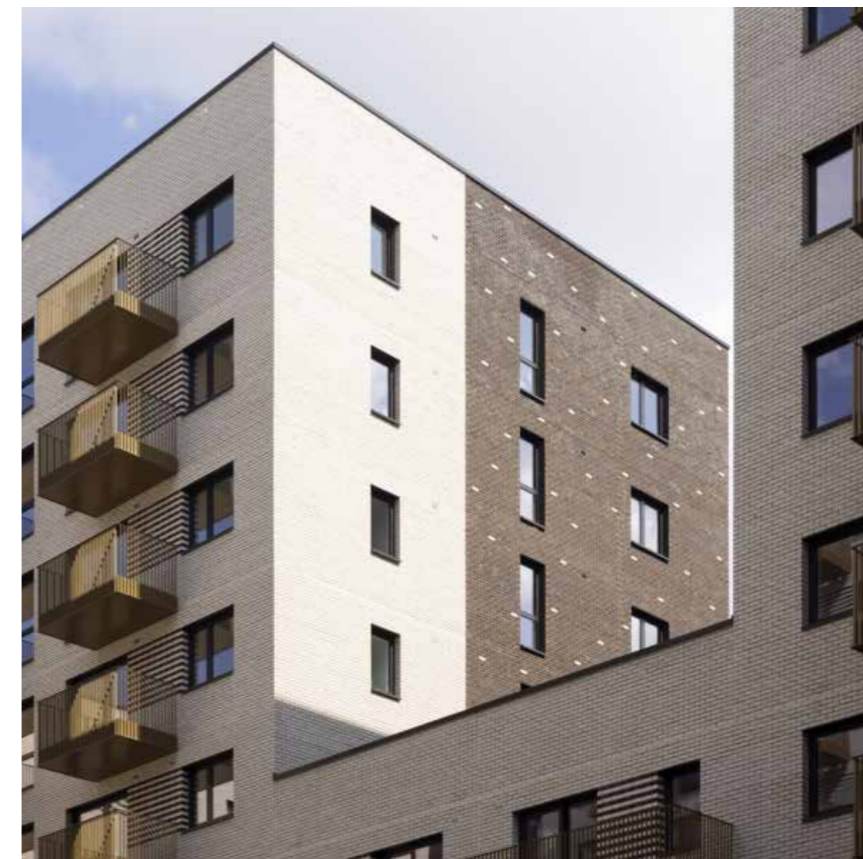
101 on Cleveland - Cleveland Street, London

EXTERNAL MATERIALS

WHITE BRICK - BUILDINGS D,E,F



Vandersanden "Perla" White with mortar colour, Dove hole by Cemex



Nearest precedent scheme -

Equipment Works, Walthamstow by Greystar & Telford Homes

