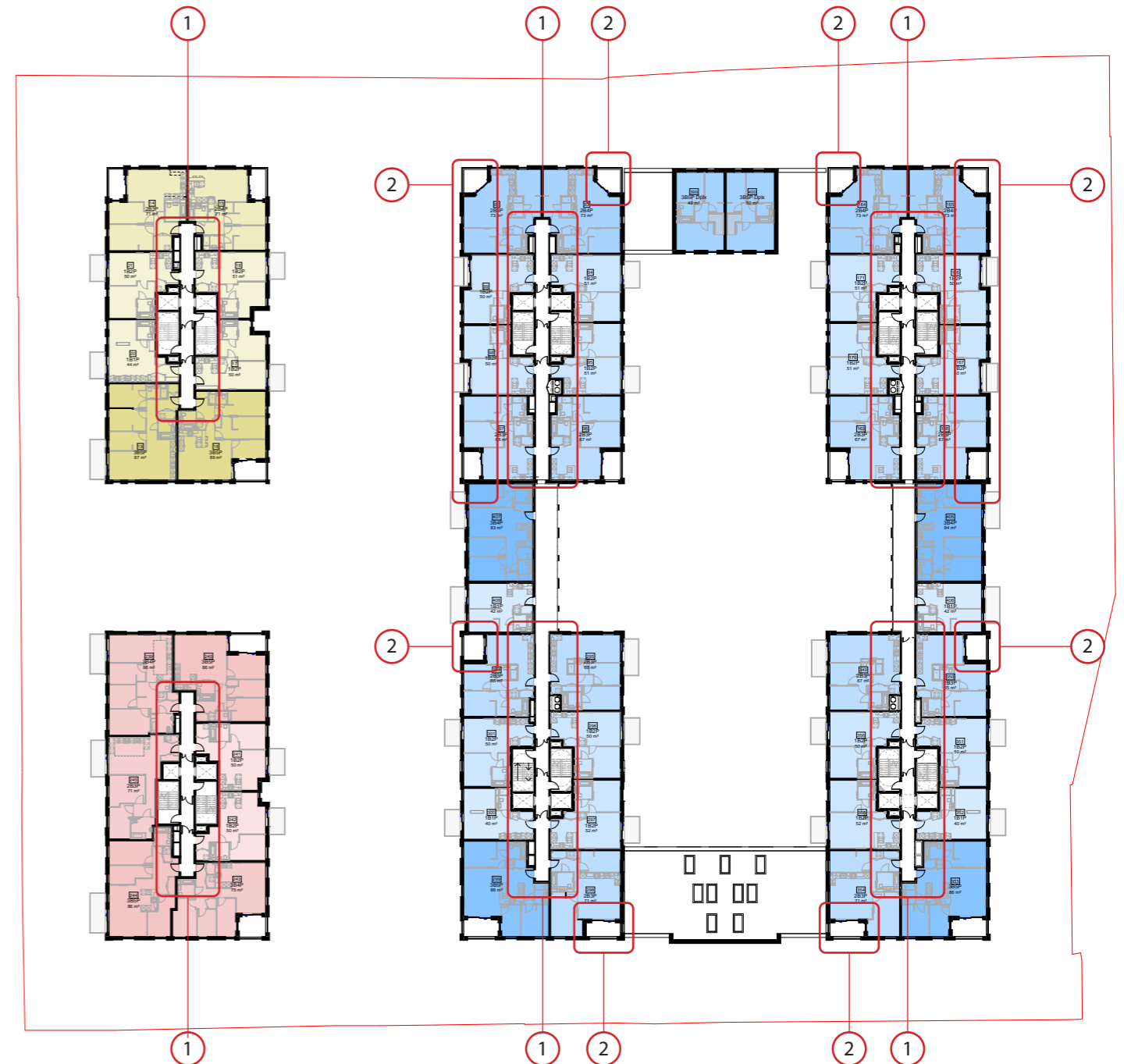


APPROVED - SECOND FLOOR PLAN PL002 REV P02



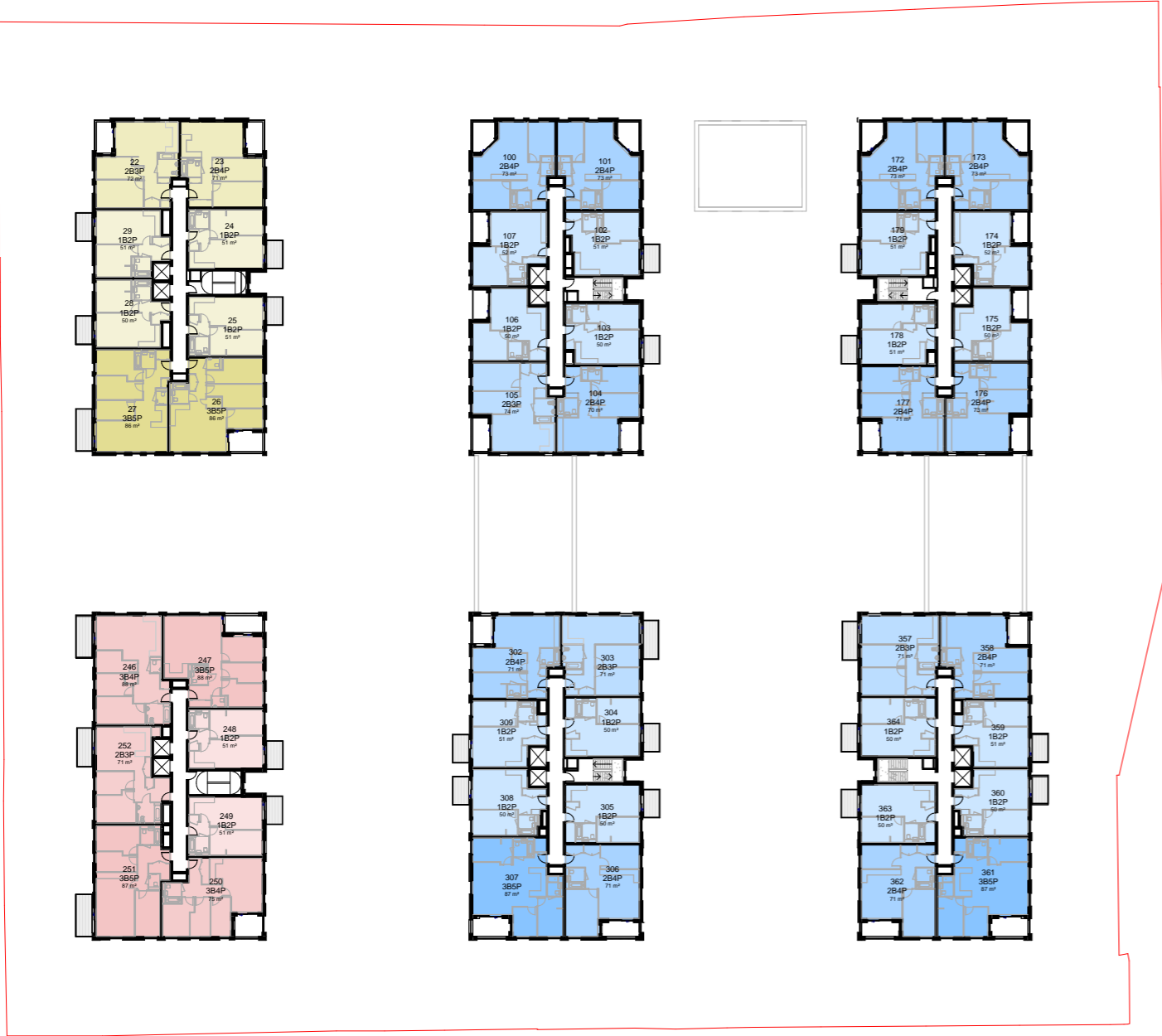
PROPOSED AMENDED LAYOUT



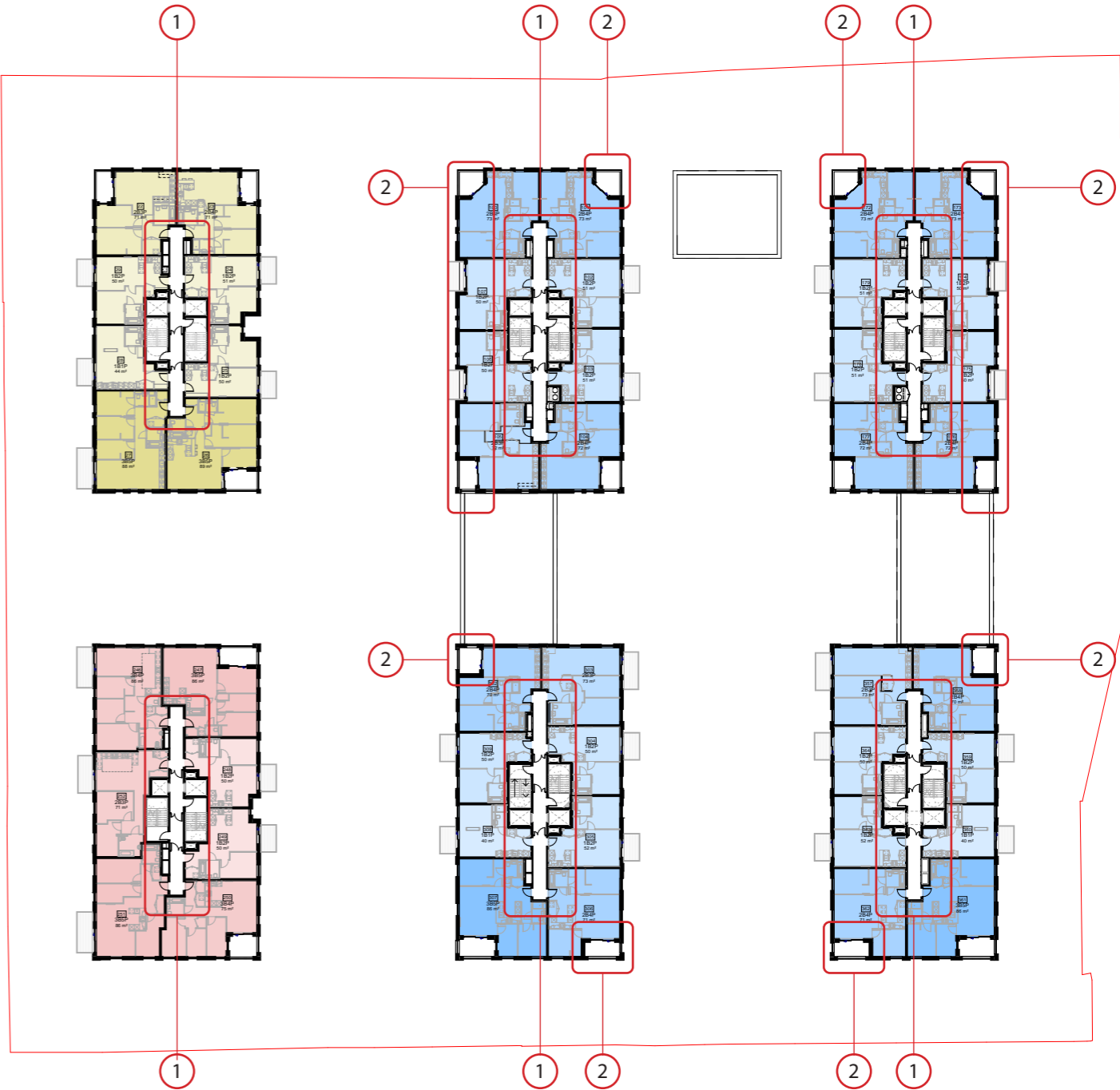
Summary of Changes

1. Second escape stair added to all cores to provide a secondary means of escape for all residents in the event of a fire. Adjacent homes, risers etc all adjusted to suit.
2. Nominal changes to balconies and facade to ensure that internal flat layouts retain compliance with future fire regulations and ensure escape path distances are reduced where possible as advised by JGA Fire.
- Note - overall change in occupancy is required to allow for the additional stairs to be added. Generally this is done by a reduction of 1B2P homes to 1B1P homes. There is no proposed change to the number of family sized dwellings.

APPROVED -THIRD FLOOR PLAN PL003 REV P02



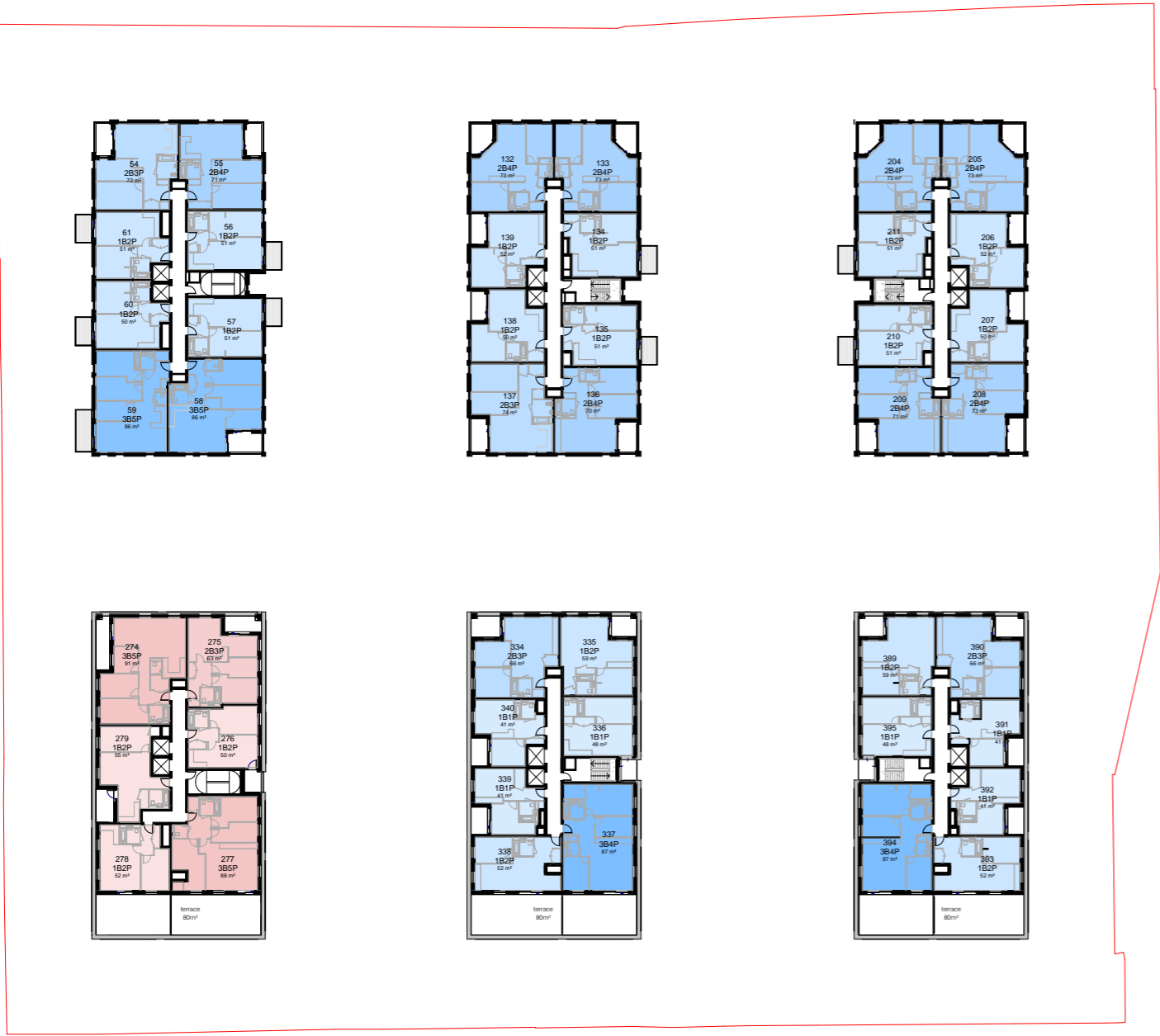
PROPOSED AMENDED LAYOUT



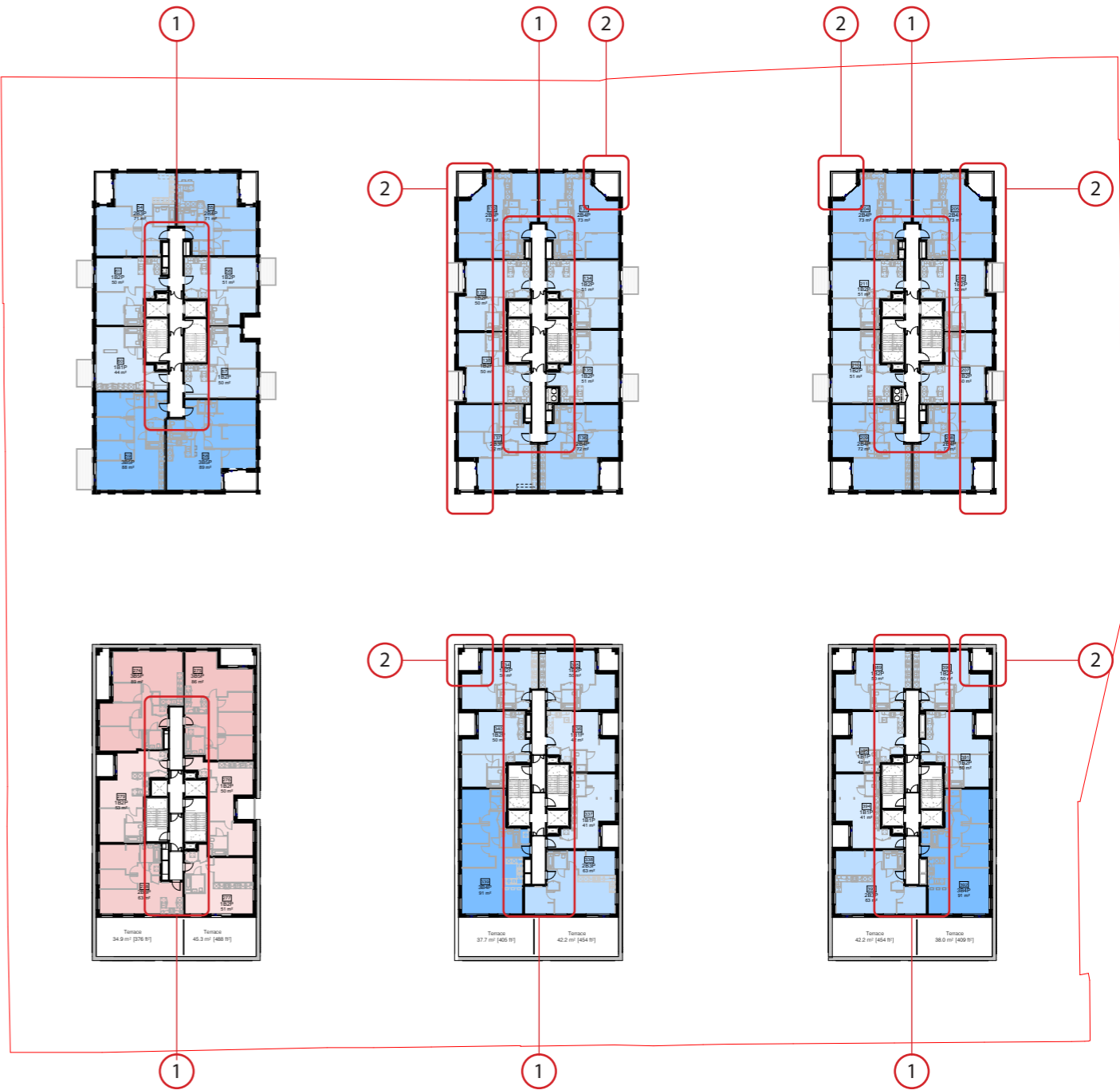
Summary of Changes

1. Second escape stair added to all cores to provide a secondary means of escape for all residents in the event of a fire. Adjacent homes, risers etc all adjusted to suit.
 2. Nominal changes to balconies and facade to ensure that internal flat layouts retain compliance with future fire regulations and ensure escape past hob distances are reduced where possible as advised by JGA Fire.
- Note - overall change in occupancy is required to allow for the additional stairs to be added. Generally this is done by a reduction of 1B2P homes to 1B1P homes. There is no proposed change to the number of family sized dwellings.

APPROVED -SEVENTH FLOOR PLAN PL007 REV P02



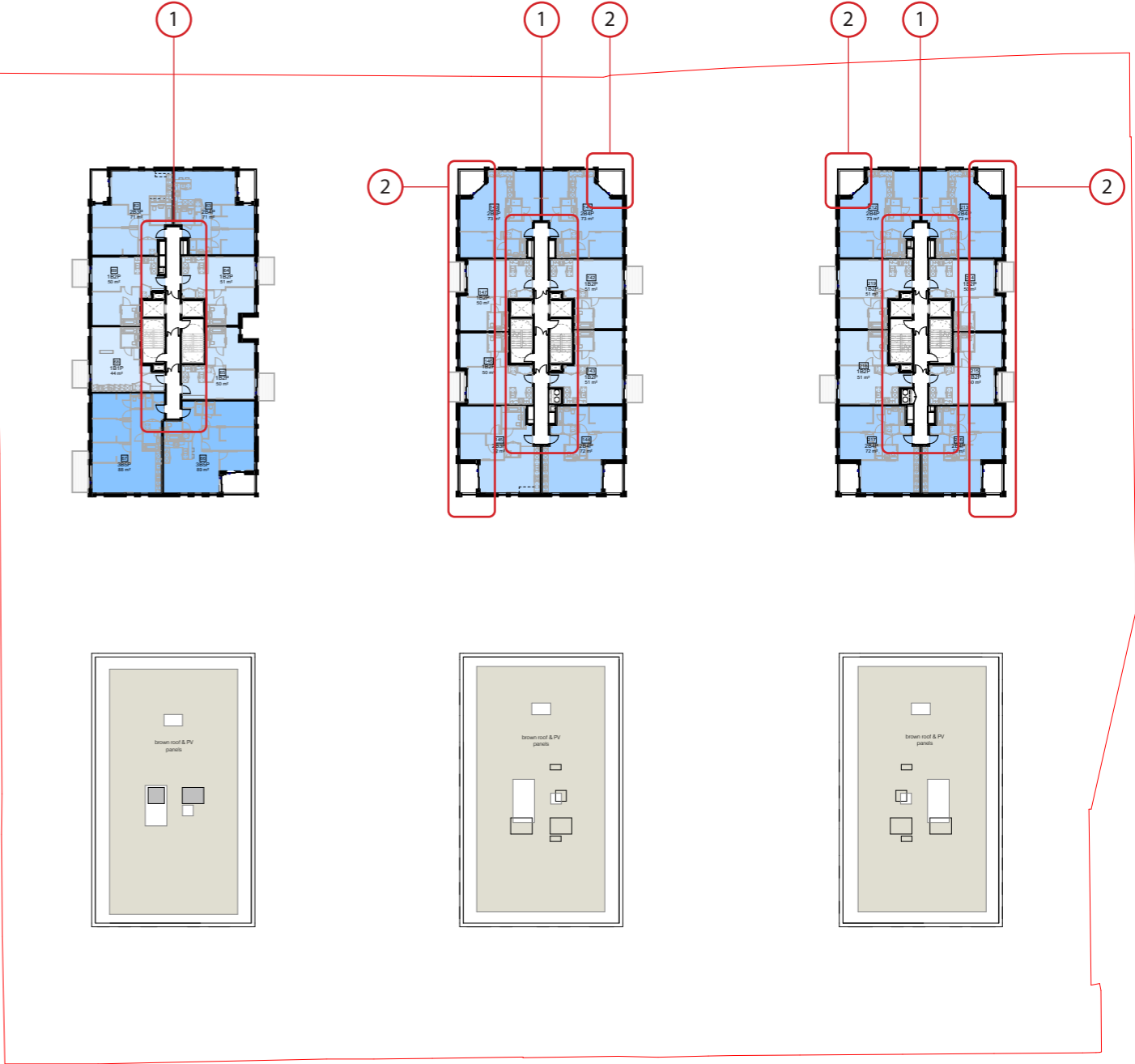
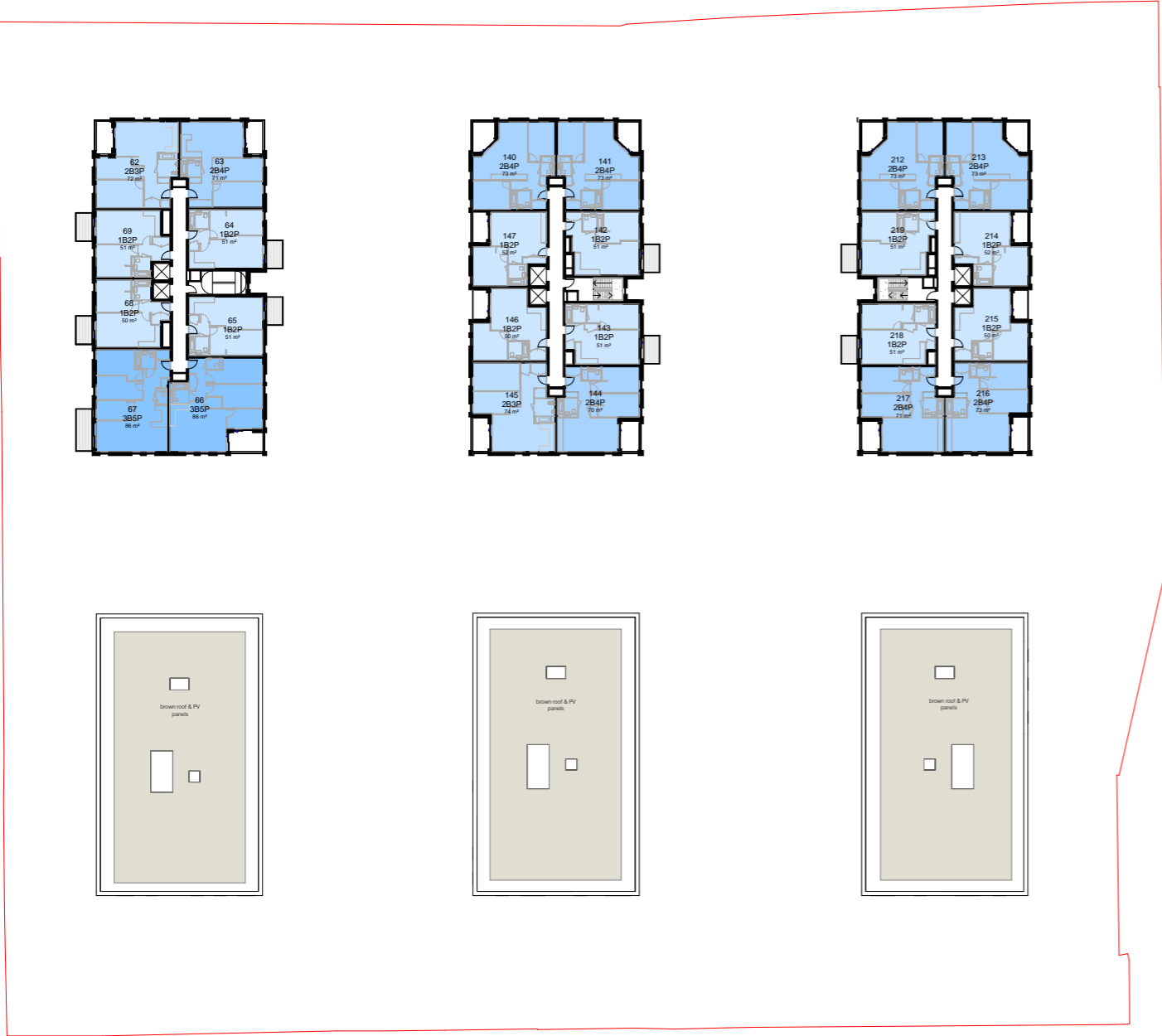
PROPOSED AMENDED LAYOUT



Summary of Changes

- 1. Second escape stair added to all cores to provide a secondary means of escape for all residents in the event of a fire. Adjacent homes, risers etc all adjusted to suit.
- 2. Nominal changes to balconies and facade to ensure that internal flat layouts retain compliance with future fire regulations and ensure escape past hob distances are reduced where possible as advised by JGA Fire.
- Note - overall change in occupancy is required to allow for the additional stairs to be added. Generally this is done by a reduction of 1B2P homes to 1B1P homes. There is no proposed change to the number of family sized dwellings.

APPROVED -EIGHTH FLOOR PLAN PL008 REV P02



Summary of Changes

- 1. Second escape stair added to all cores to provide a secondary means of escape for all residents in the event of a fire. Adjacent homes, risers etc all adjusted to suit.
- 2. Nominal changes to balconies and facade to ensure that internal flat layouts retain compliance with future fire regulations and ensure escape past hob distances are reduced where possible as advised by JGA Fire.
- Note - overall change in occupancy is required to allow for the additional stairs to be added. Generally this is done by a reduction of 1B2P homes to 1B1P homes. There is no proposed change to the number of family sized dwellings.

APPROVED - SOUTH ELEVATIONS PL100 REV P02



PROPOSED AMENDED LAYOUT



Summary of Changes

- 1. Flat layouts have been adjusted to ensure escape distances past cooking devices are acceptable. Windows adjusted to suit. The overall number and sizes of the windows have remained the same.
- 2. Height of acoustic louvre screen has been raised to ensure suitability with Air source heat pumps required. Heights all remain below the max heights as advised by Heathrow Airport radar maximums.

APPROVED - EAST ELEVATIONS PL101 REV P02



PROPOSED AMENDED LAYOUT



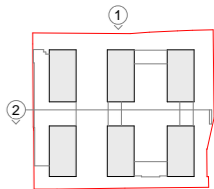
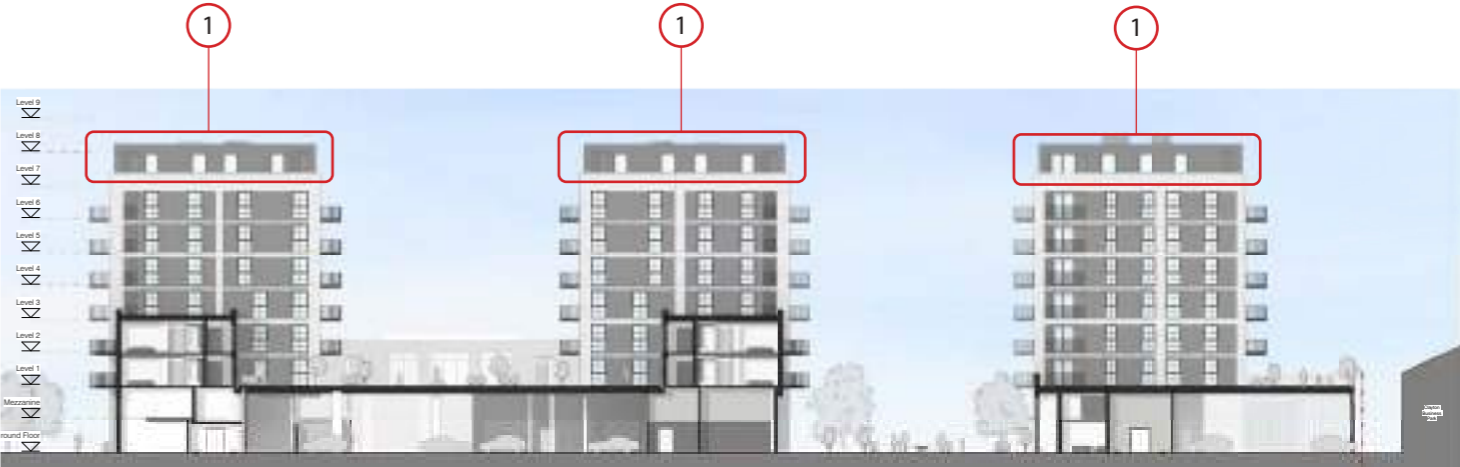
Summary of Changes

- 1. Flat layouts have been adjusted to ensure escape distances past cooking devices are acceptable. Windows adjusted to suit. The overall number and sizes of the windows have remained the same.
- 2. Height of acoustic louvre screen has been raised to ensure suitability with Air source heat pumps required. Heights all remain below the max heights as advised by Heathrow Airport radar maximums.

APPROVED - NORTH ELEVATIONS PL102 REV P01



PROPOSED AMENDED LAYOUT



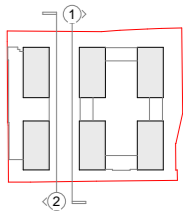
Summary of Changes

- 1. Flat layouts have been adjusted to ensure escape distances past cooking devices are acceptable. Windows adjusted to suit. The overall number and sizes of the windows have remained the same.
- Note - Kitchen layout has been adjusted in Canal facing homes to suit escape distances past a cooking device. The new flat layout requires the bottom portion of the windows to be obscured as the kitchen sits abutting it.
- 2. Height of acoustic louvre screen has been raised to ensure suitability with Air source heat pumps required. Heights all remain below the max heights as advised by Heathrow Airport radar maximums.

APPROVED - RESIDENTIAL PARK ELEVATIONS PL104
REV P01



PROPOSED AMENDED LAYOUT



Summary of Changes

- 1. Flat layouts have been adjusted to ensure escape distances past cooking devices are acceptable. Windows adjusted to suit. The overall number and sizes of the windows have remained the same.
- 2. Height of acoustic louvre screen has been raised to ensure suitability with Air source heat pumps required. Heights all remain below the max heights as advised by Heathrow Airport radar maximums.

SUMMARY OF AMENDMENTS

- Nominal impact to the facade on elevations to Buildings B&C.
- Massing changed but intent of dividing the massing is retained by relocating the “slot”.
- Revised internal layouts required to ensure compliant corridor escape distances.
- Revised internal layouts required to ensure escape routes via hobs/cooking devices are acceptable.

