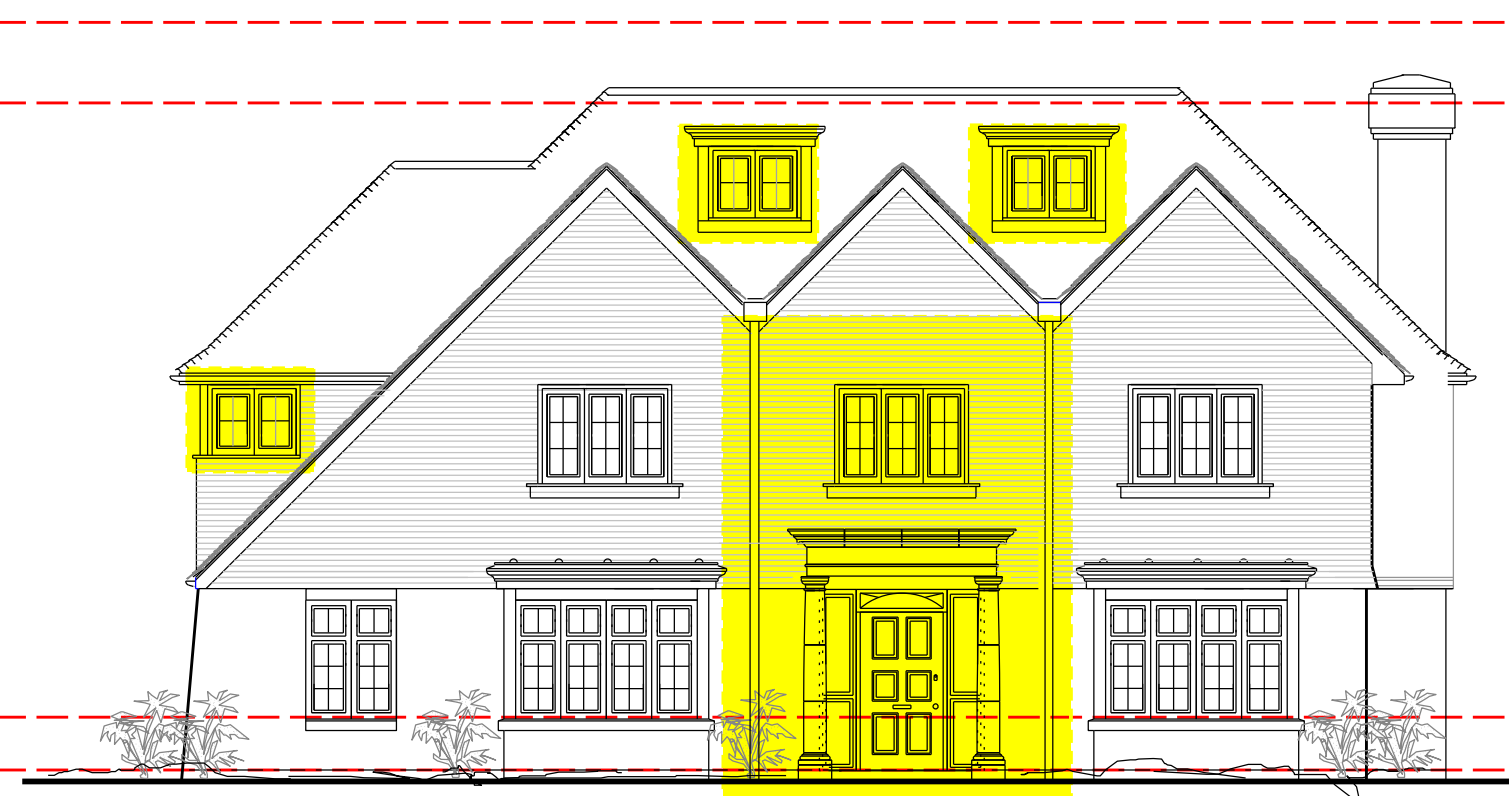




Front Elevation
Approved 73243/APP/2022/2535



New Front Elevation

Approved Ridge Height

Approved FFL 76.1m

Proposed FFL 75.4m

Changes proposed

Reduce finished floor level by 700mm
Increase in width 4250mm

Front Elevation

Front door repositioned
New central gabled element
New first floor corner window
2 new dormers
Corner bay omitted



RHS Elevation
Approved 73243/APP/2022/2535



Proposed RHS Elevation

Approved Ridge Height

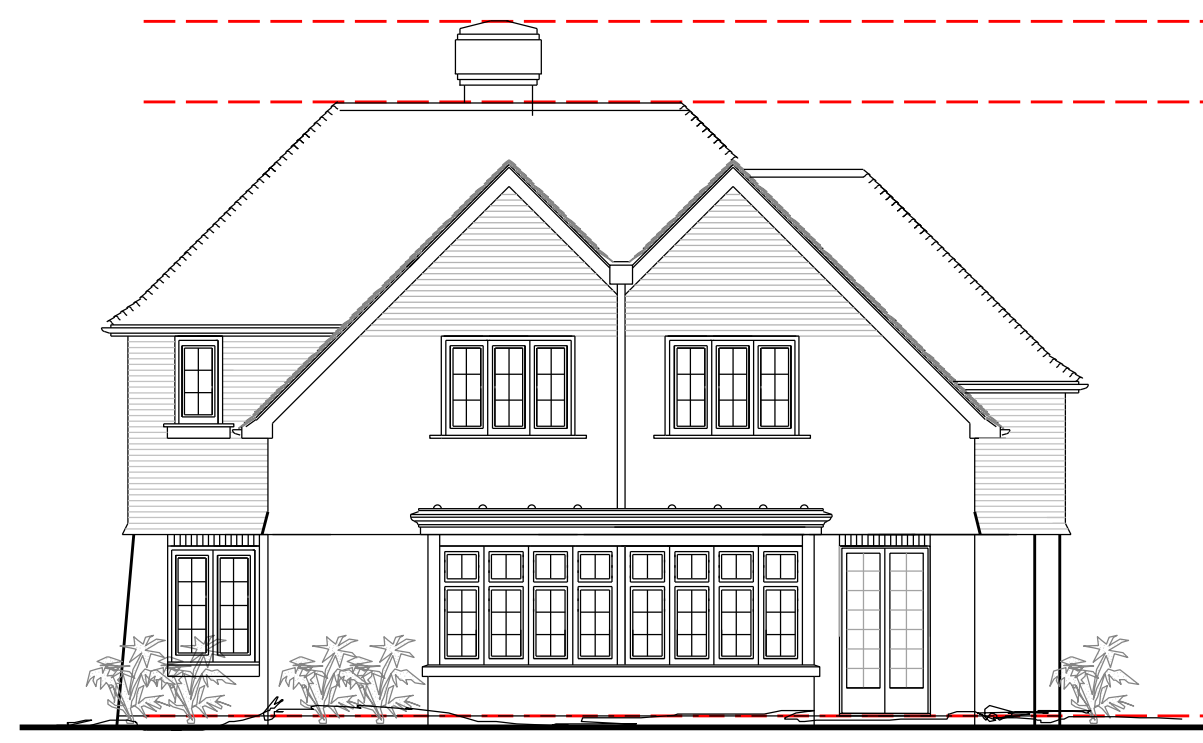
Approved FFL 76.1m

Proposed FFL 75.4m

Reduce finished floor level by 700mm
Reduction in depth of 800mm

RHS Elevation

Bay replaced with 2 ground floor windows
Small Ground floor window and first floor skylight omitted
New double height bay to rear.



Rear Elevation
Approved 73243/APP/2022/2535



Proposed Rear Elevation

Approved Ridge Height

Approved FFL 76.1m

Proposed FFL 75.4m

Reduce finished floor level by 700mm
Increase in width 4250mm

Rear Elevation

Additional Gabled Element
Sky lights added
New first floor corner window
Ground floor bay split into 2 and first floor bay element added



LHS Elevation
Approved 73243/APP/2022/2535



Proposed LHS Elevation

Approved Ridge Height

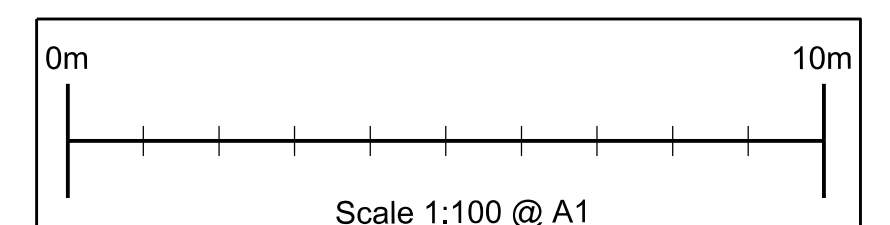
Approved FFL 76.1m

Proposed FFL 75.4m

Reduce finished floor level by 700mm
Reduction in depth of 800mm

LHS Elevation

Rear bay increased to double height
One Ground floor window repositioned
Additional skylights at first floor
Staircase window replaced with 2 corner windows, one serving bathroom
2 high level attic conservation style windows added



Notes/Revisions:

 design planning architecture	The Old Brewery Tap 3 Shirburn Street Watlington Oxfordshire OX49 5BU	Tel: 01491 613066 Fax: 01491 614017 Email: mail@dparchitects.co.uk Web: www.dparchitects.co.uk		Client Gavacan Homes	Status Planning
				Project RESIDENTIAL DEVELOPMENT	

Location Land Adj Green End, 17 Dene Road, Northwood, HA6 2BS	Dwg N°	Rev
Drawing Title Plots 3-6 Comparative Plans Sheet 2		
Drawn By ML	Scale 1:100 @ A1	Date 06.08.2025
25 GEDR C3-6 (2)		

dp