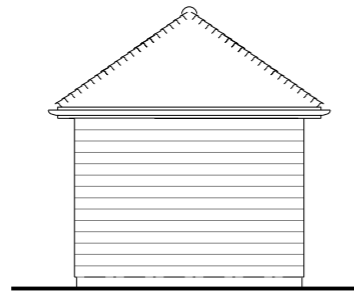
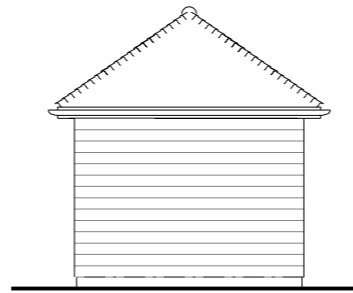


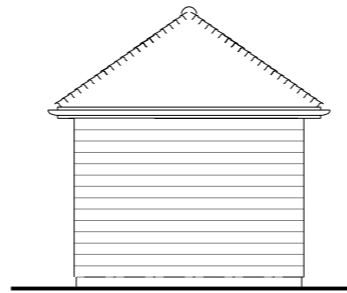
FRONT ELEVATION



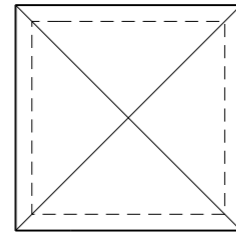
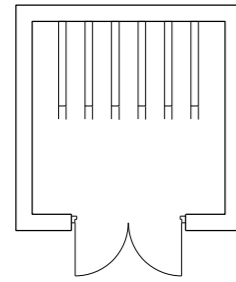
LHS ELEVATION



REAR ELEVATION

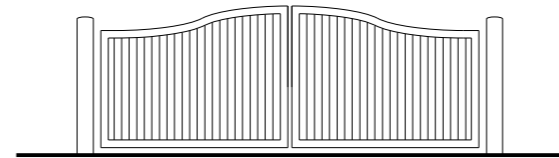


RHS ELEVATION

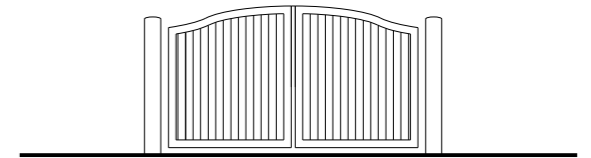


Plots 3-6 Bike Store

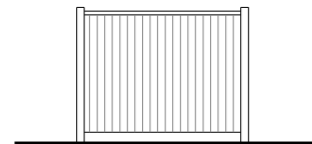
The Bike Storage Co - Semi Vertical Cycle Rack
For 6 cycles
TOTAL - 6.5 SQ M



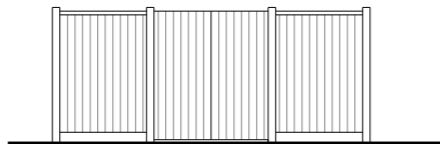
Timber gates large



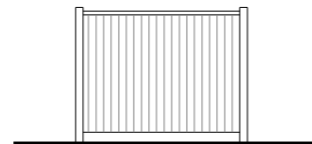
Timber gates small



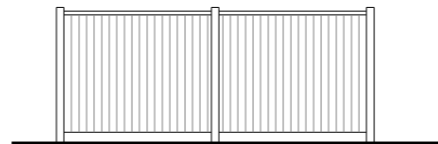
LHS ELEVATION



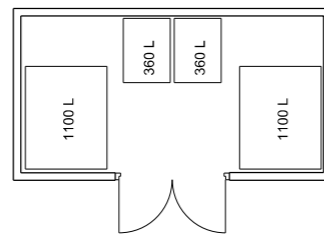
FRONT ELEVATION



RHS ELEVATION

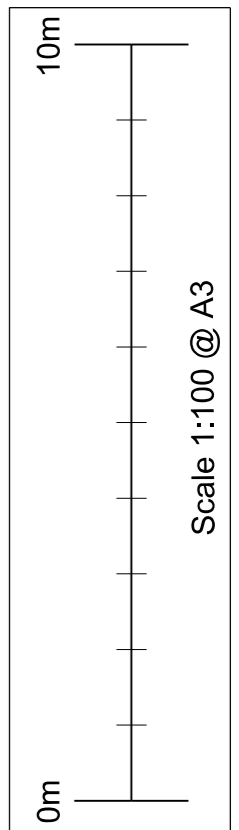


REAR ELEVATION



Refuse: 1 x 1100L bins
Mixed Recycling: 1 x 1100L + 1 x 360L bins
Food: 1 x 360L

Plots 3-6 Bin Store



Notes / Revisions



The Old Brewery Tap
3 Sharnburn Street
Watlington
Oxfordshire OX49 5BU

Tel: 01491 613066
Fax: 01491 614017
Email: mail@dparchitects.co.uk
Web: www.dparchitects.co.uk



Client	AJA TAYLOR & Co Ltd	Status	PLANNING
Project	RESIDENTIAL DEVELOPMENT		

Land Adj Green End, 17 Dene Road, Northwood, HA6 2BS			
Drawing Title	Dwg N	Rev	
Bin and Bike Stores and gates			
Drawn By	Scale	Date	22 GEDR SD1A
ML	1:100 @ A3	04.08.2022	

