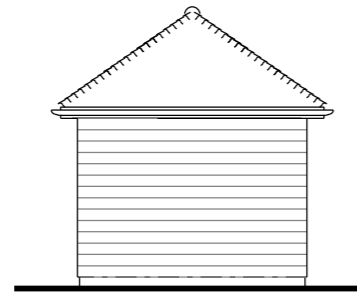
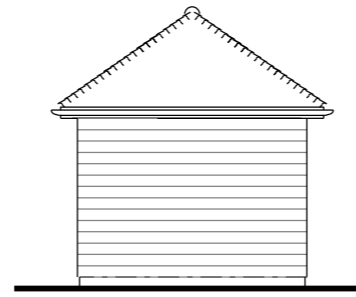


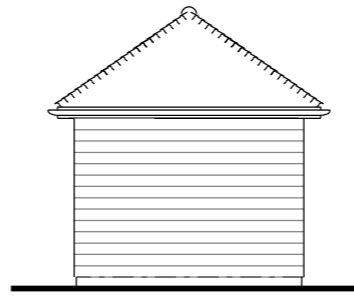
FRONT ELEVATION



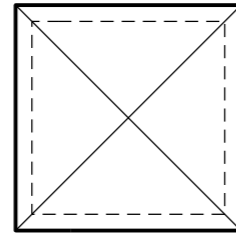
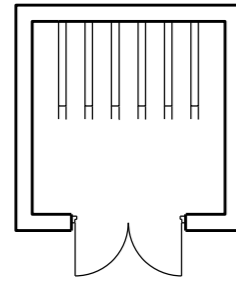
LHS ELEVATION



REAR ELEVATION

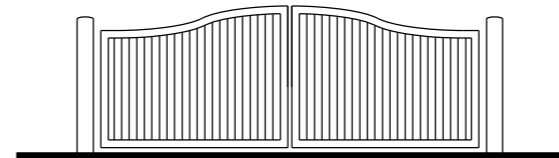


RHS ELEVATION

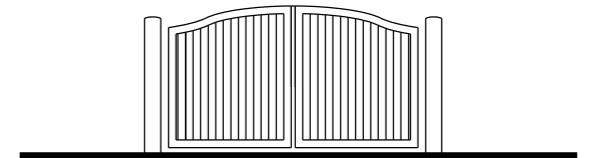


### Bike Store

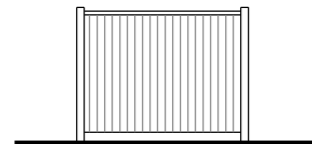
The Bike Storage Co - Semi Vertical Cycle Rack  
For 6 cycles  
TOTAL - 6.5 SQ M



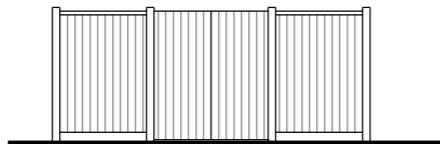
Timber gates large



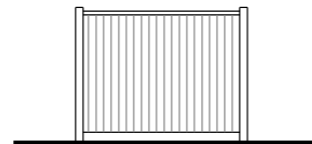
Timber gates small



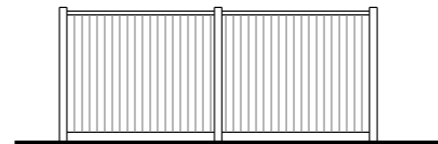
LHS ELEVATION



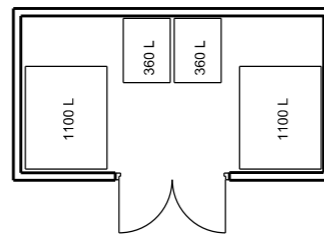
FRONT ELEVATION



RHS ELEVATION

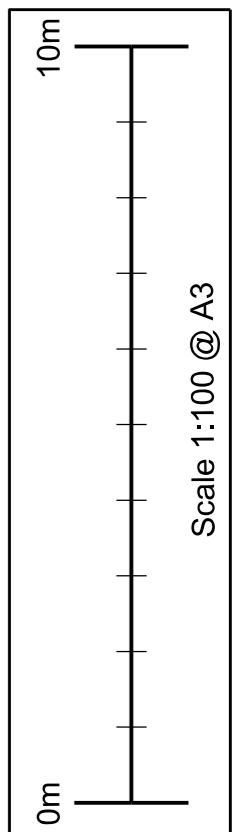


REAR ELEVATION



### Bin Store

Refuse: 1 x 1100L bins  
Mixed Recycling: 1 x 1100L + 1 x 360L bins  
Food: 1 x 360L



Notes / Revisions

**dp architects**  
design | planning | architecture

The Old Brewery Tap  
3 Sharnburn Street  
Watlington  
Oxfordshire OX49 5BU

Tel: 01491 613066  
Fax: 01491 614017  
Email: mail@dparchitects.co.uk  
Web: www.dparchitects.co.uk

Client	AJA TAYLOR & Co Ltd	Status	PLANNING
Project	RESIDENTIAL DEVELOPMENT		

Land Adj Green End, 17 Dene Road, Northwood, HA6 2BS			
Drawing Title	Dwg N	Rev	
Bin and Bike Stores and gates	22 GEDR SD1 -		
Drawn By	Scale	Date	
ML	1:100 @ A3	04.08.2022	