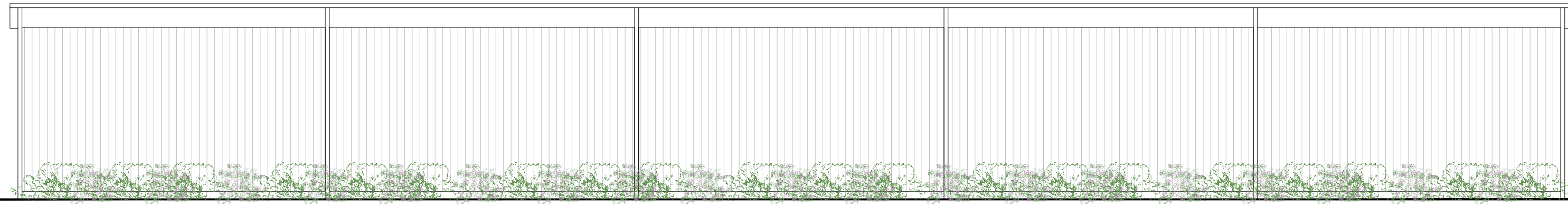
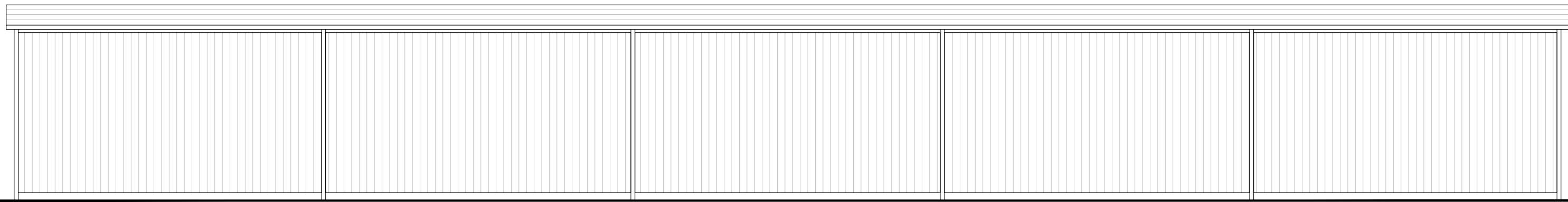


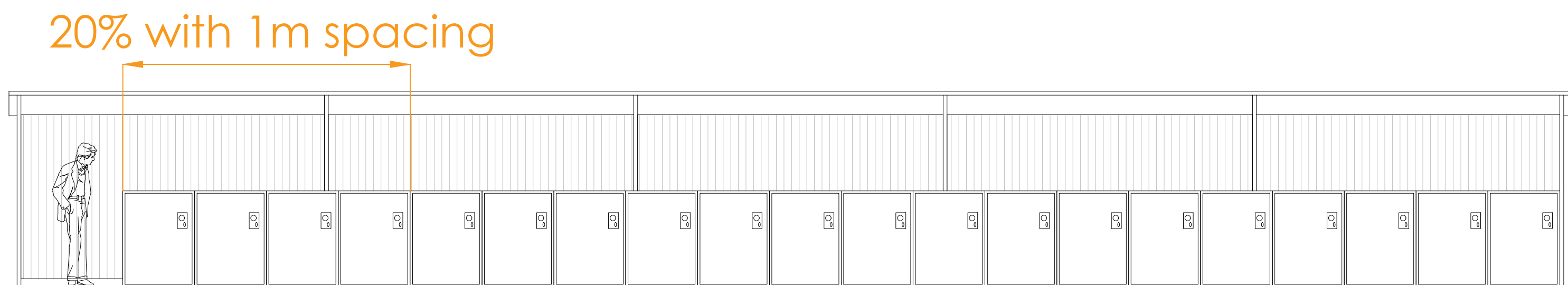
CONDITION 8



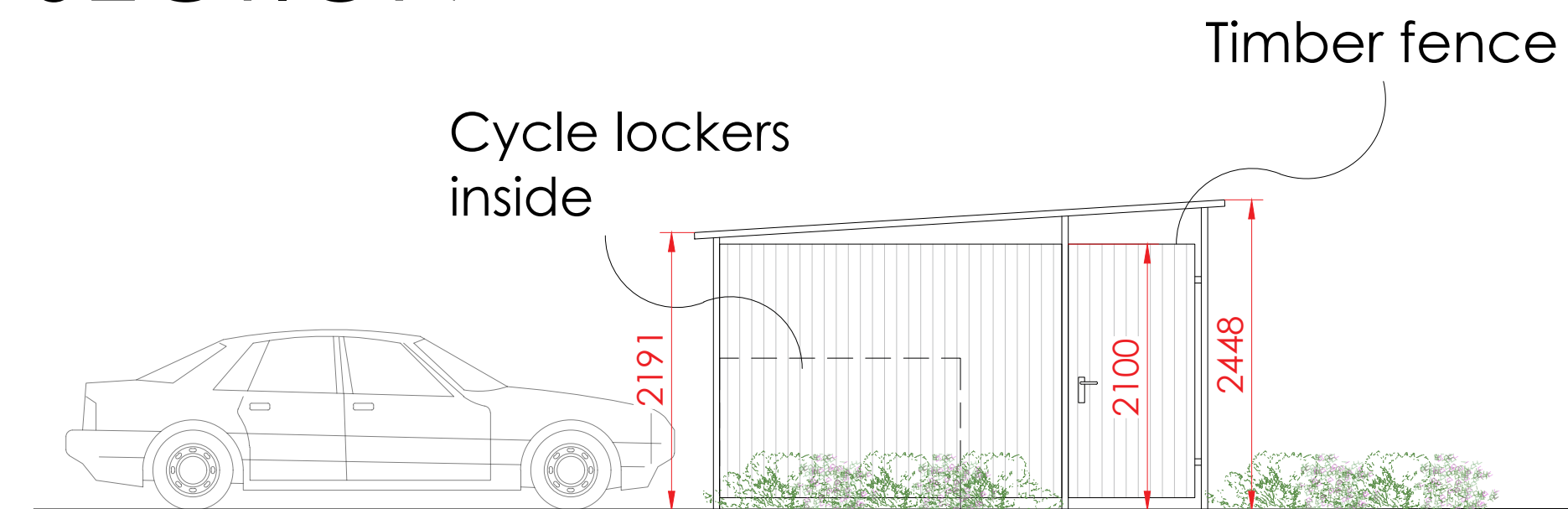
SIDE 1 ELEVATION



SIDE 2 ELEVATION

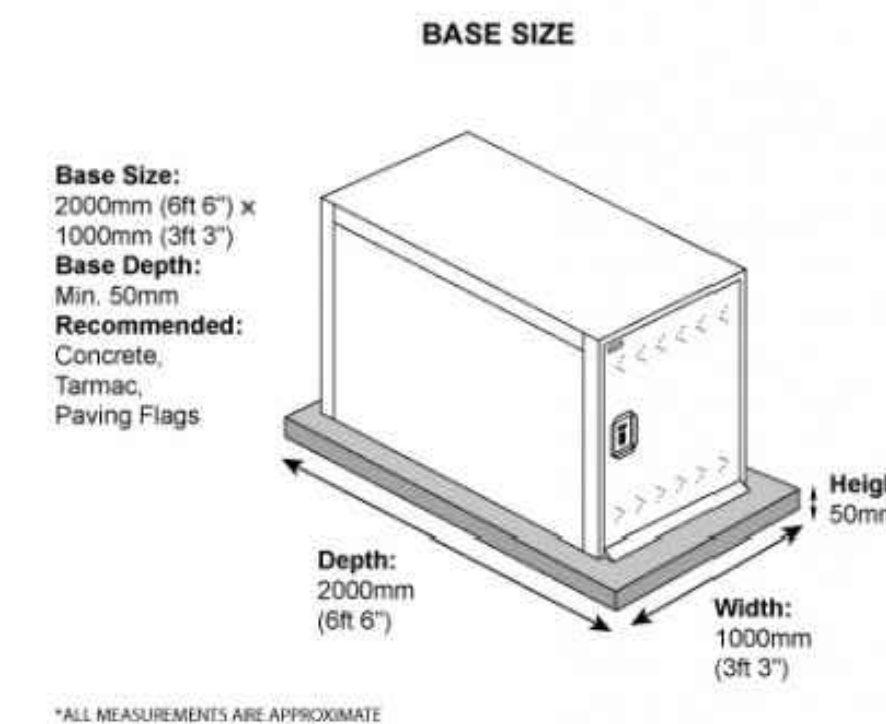
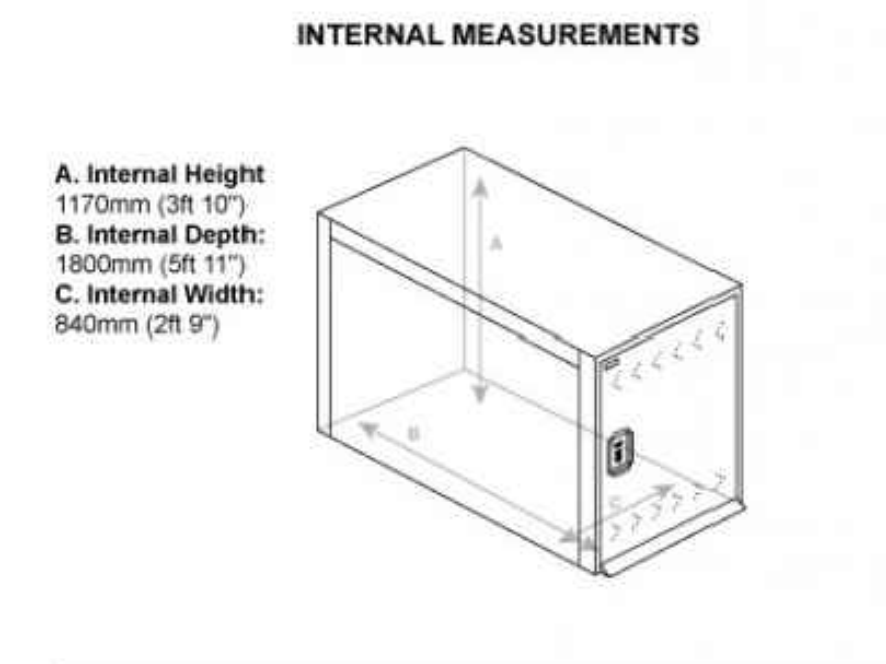
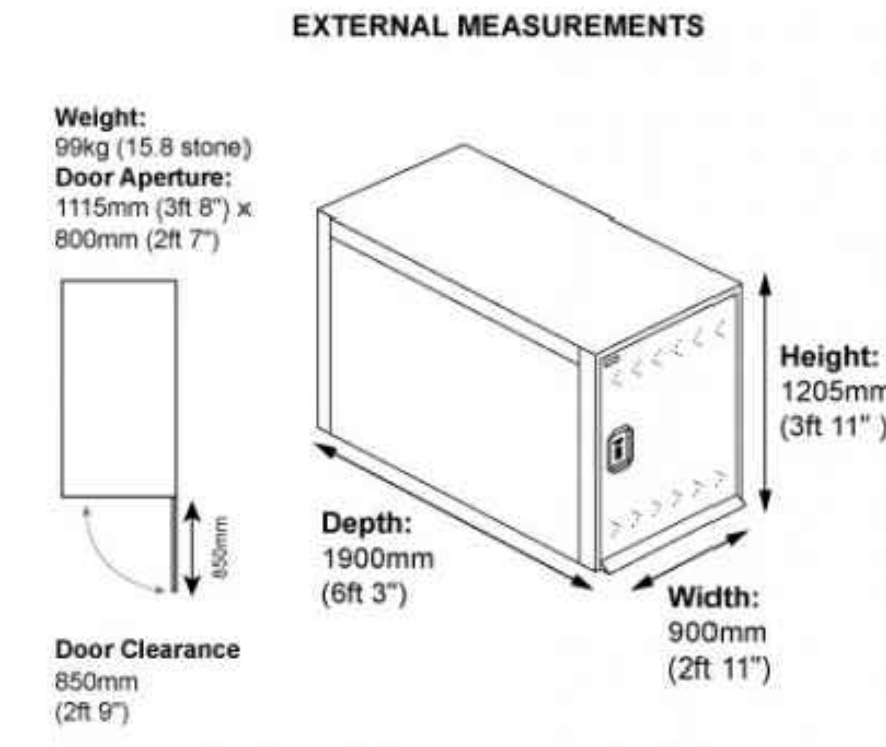


SECTION

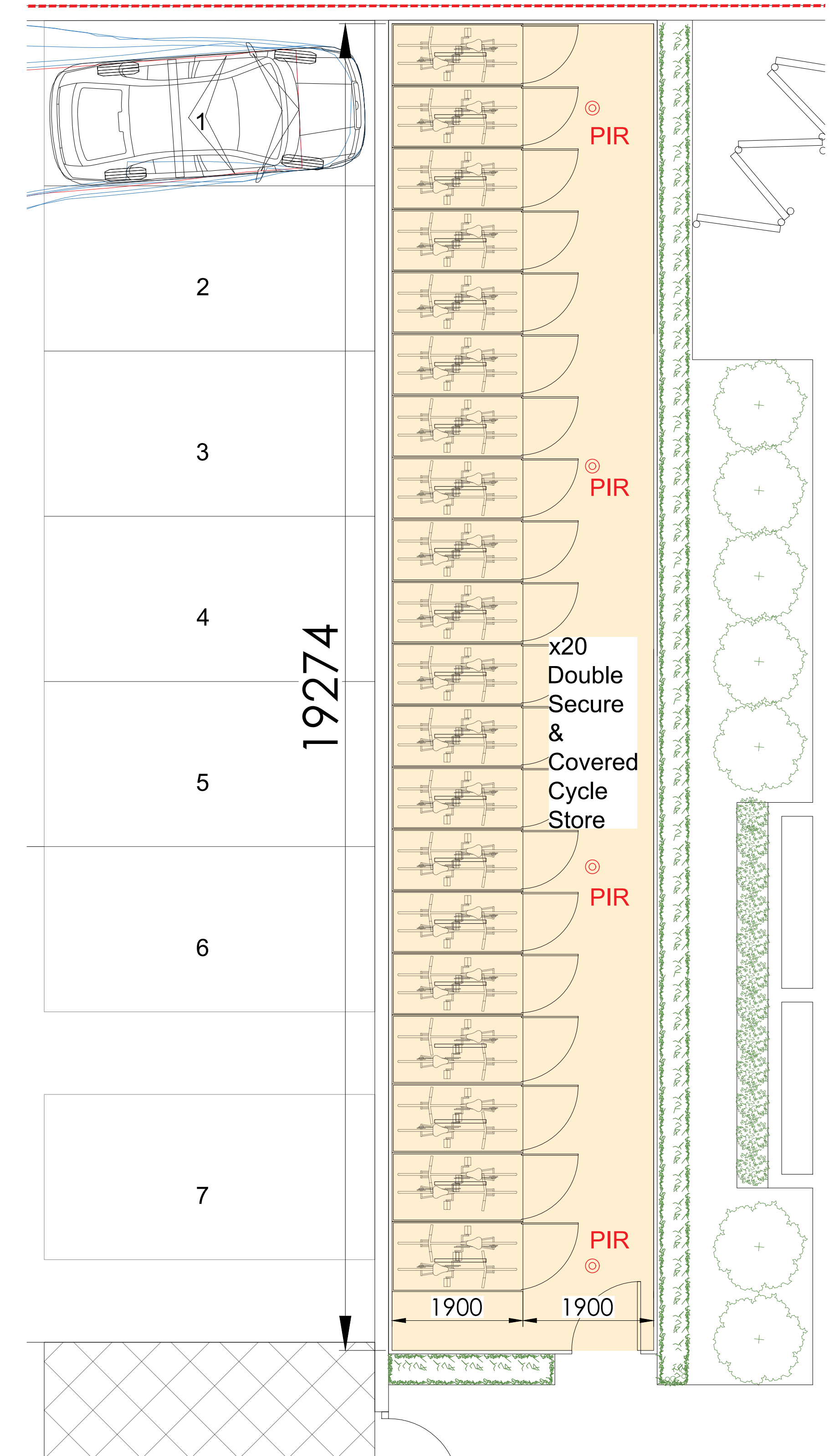


FRONT ELEVATION

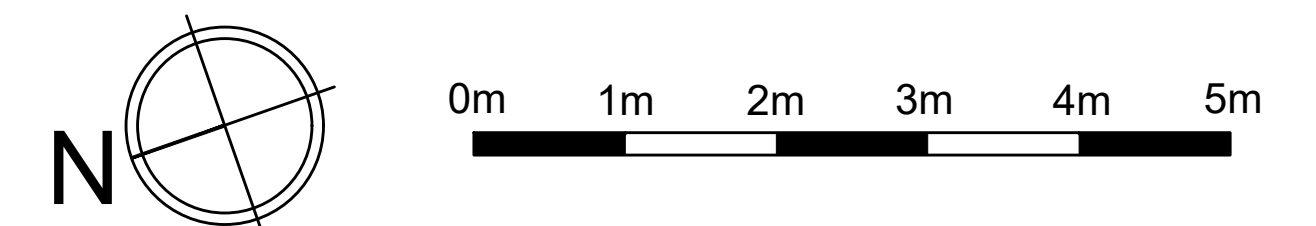
NOTES: There is a total of 20 double cycle lockers; 16 are 90mm wide and 4 are 1m wide. All cycles locker are located within the perimeter of the enclosed wooden shelter. The size of a cycle locker is: 1200mm high; 1900mm deep and 900/1000mm wide.



DOUBLE LOCKER



CYCLE STORAGE IN PLAN



PROJECT	DWG NO.	SCALE	DETAIL	08.11.2023							PROJECT NO.	P R Architecture Ltd. Chartered Architect 120, Pinner Road, Harrow, HA1 4JD. Tel: 0208 357 2304
LAND NORTH EAST OF 1040 UXBRIDGE RD, HAYES, UB4 0RJ	12	1:50 @ A1	CYCLE STORAGE	Submitted to the Council							23.31	
PLANNING												