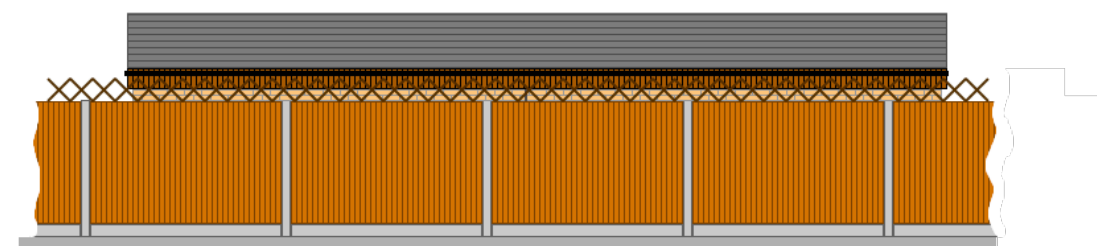


East Elevation
(Timber cycle sheds not shown for clarity)



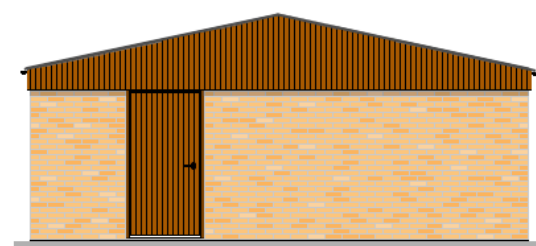
North Elevation
(Some timber gable cladding removed to show steel truss frame)



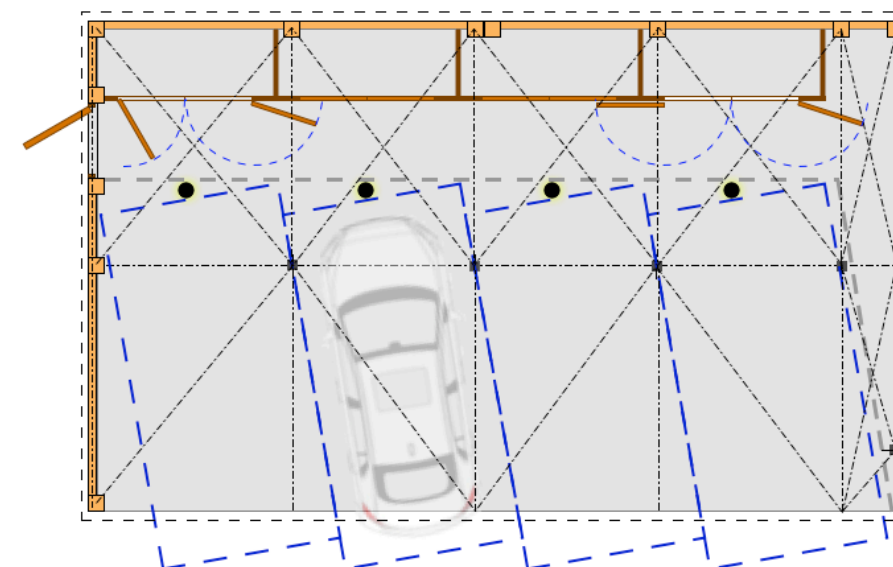
West Elevation
View from 1a garden



Roof plan



South Elevation



Plan Section

Notes:

1. Each parking bays 2.4m x 4.8m
2. Cycle sheds - G&T timber construction 0.9m x 2.3m x 2m internal, with double leaf legged and braced doors, rebated to meet stiles, 1m wide, hung on heavy-duty hook-band T Hinges, bolted and lockable with 5 lever mortice dead lock
3. Internal electric supply for EV and cycle charging.
4. Brick and galvanised steel cantilever canopy framework, with G&T timber facia, supporting fire-proof insulated pantile effect steel cladding and flashings, coloured Anthracite RAL7016.
5. Reinforced concrete raft foundation.
6. Illuminated steel bollards to segregate vehicle parking and pedestrain footpath.
7. Automatic motion sensing lighting and security survelynce systems.



Project: 3 new dwellings and proposed outbuilding
Location: Land adjoining 1a Nicholls Avenue UB8 3JL
Drawing: NA05-04a Carport elevations + plan
Scale: 1:100 @ A3 August 2024
Applicant: Ian Cook 07860 203 272