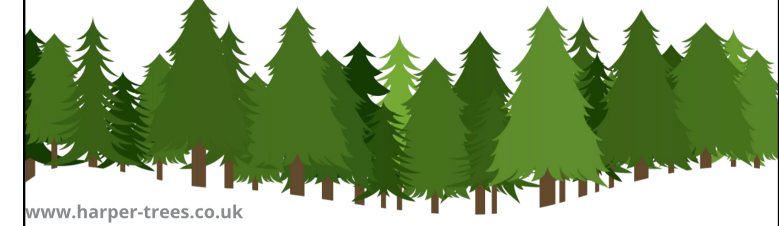


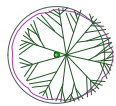
# Harper tree consulting



[www.harper-trees.co.uk](http://www.harper-trees.co.uk)

28 Rodbourne Close, Lymington, Hampshire, SO41 0LW.  
Email: [jonharper@harper-trees.co.uk](mailto:jonharper@harper-trees.co.uk)  
Tel: 07982 911104 or 01590 436272  
[www.harper-trees.co.uk](http://www.harper-trees.co.uk)  
[www.treesurveyshampshire.co.uk](http://www.treesurveyshampshire.co.uk)

Client: Mr Challuri	Date: October 09th 2020
	Ref: 2020106/LSP001
Site: 17 Northdown Close Ruislip	Scale @ A3: 1:100
	Title: Landscaping Plan (1)



Existing tree that are positioned off of the application site



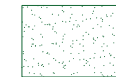
Cupressus sempervirens (Italian cypress) planted at a height of 2-2.5m from 10litre containers.



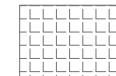
Prunus cerasafera (Cherry plum) planted as a standard select with a height of 2.5-3m with a stem girth of 10-12cms.



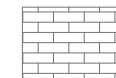
Prunus laurocerasus (Cherry laurel) planted at a height of 80-100cms with a frequency of 3 plants per metre.



New shade tolerant turf laid on a mixture of native soil and imported topsoil. Turf must be laid within 24 hours of delivery so attention must be drawn to the implementation schedule in this document.



Grass concrete pavers laid on a bed of crushed gravel mixed with sharp sand. The pavers will then be filled with imported topsoil and over seeded with a hard wearing blend of shade tolerant grass seed.



Grey concrete pavers with built in infiltration spaces laid on a bed of sharp sand with a granular infill.



Disabled access ramp with a drop of 1:12



High quality solar powered flush fit lighting with a water resistance rating of at least IP44.

## Top soil

All imported topsoil must comply with the British Standard BS3882:2015. This standard governs many of the characteristics of the soil including the maximum amount of extractable potassium and electrical conductivity. The use of sub standard soils can result in many post landscaping issues including declining health of planting that must be replace.

## Tree & Shrub Planting

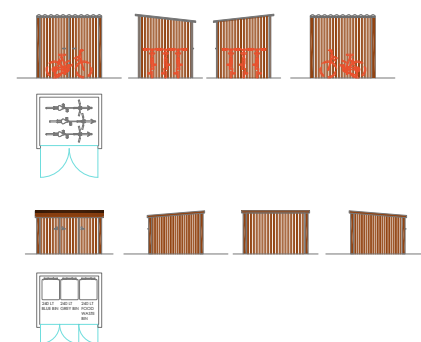
Stock shall be materially undamaged, sturdy, healthy and vigorous, of good shape and without elongated shoots, and free from pests and diseases, discolouration, weeds and physiological disorders. Plants shall have been grown in a suitable environment and hardened off. The root system shall be to the requirements of the National Plant Specification and balanced with branch system.

Deciduous trees and shrubs shall be planted only during the season November - March, and only when the soil is in a friable condition. Evergreens may be planted September/October or April/May. Carry out preparation and planting while soil and weather conditions are suitable and when soil is not so wet that to work it would result in a loss of structure. Do not undertake work during periods of heavy frost or strong winds.

Pits for planting standard select trees will be square, and 750x750mm by 700mm deep. The soil used to backfill planting pits shall consist of 20% peat free compost (one spade of compost to four spades of soil).

## Staking Trees

Standard and Feathered trees shall be supplied with one tree stake. The overall length of the stake shall be sufficient to ensure that they are firm when driven into the soil and that the top of the stake extends above ground level to approximately one third of the tree's height. Stakes are to be hammered into the ground before the tree is positioned in the pit. Stakes shall be whole sections of softwood timber 50 mm. to 75 mm. top diameter, peeled and pressure treated in accordance with BS 4072. Tree to be secured with one tree tie with a spacer shall be positioned approximately 50 mm. from the top of the stake to hold the tree, ensuring that tree and stake do not touch in any place.



Detail of timber bicycle and refuse storage facilities.

## Aftercare

Planting shall be tended for 60 months from the date of completion of all Works.

### (a) WEEDING

Throughout the aftercare period keep all shrub planting areas weed free. For woodland planting keep an area of 1 m. in diameter around each planting station in a weed free condition. This may be achieved by the use of an approved herbicide or by regular cultivation. A minimum of 3 visits for weed control will be required during the growing season. All injurious weeds, defined in the Weeds Act 1959, will be removed from the remainder of each transplant tree or shrub plot. The growth of herbaceous material between the weed free planting stations should be controlled by strimming twice per year.

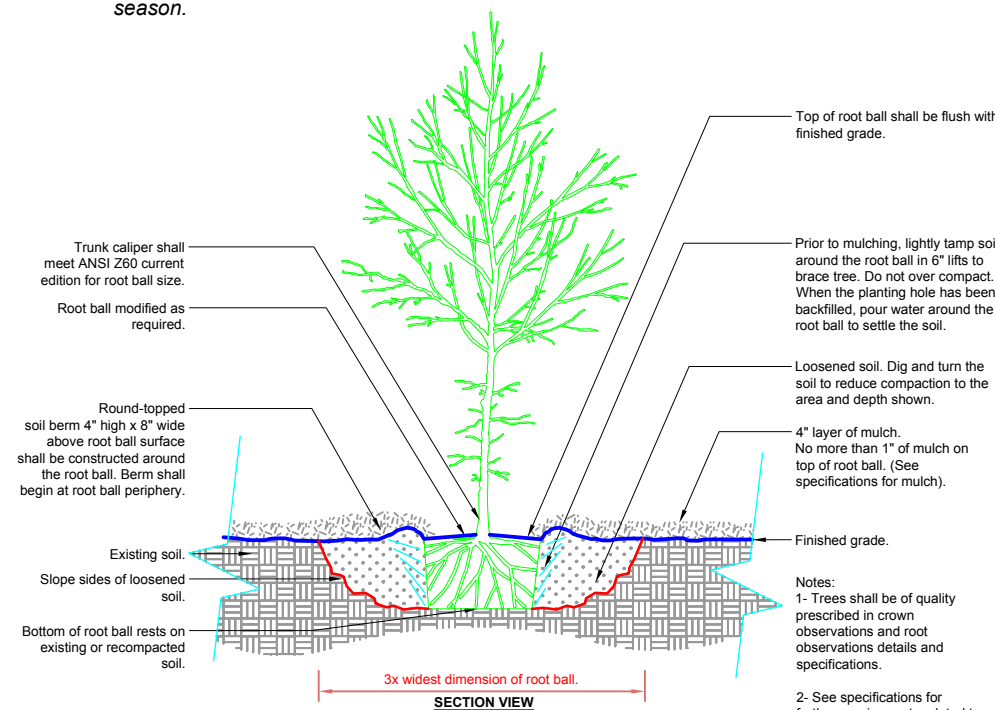
### (b) STAKES, TREES, SHRUBS AND TIES

All stakes, trees and shrubs shall be maintained in firm positions within the ground and with all ties securely fixed and adjusted to allow for the increase in stem girth.

### (c) REPLACEMENTS

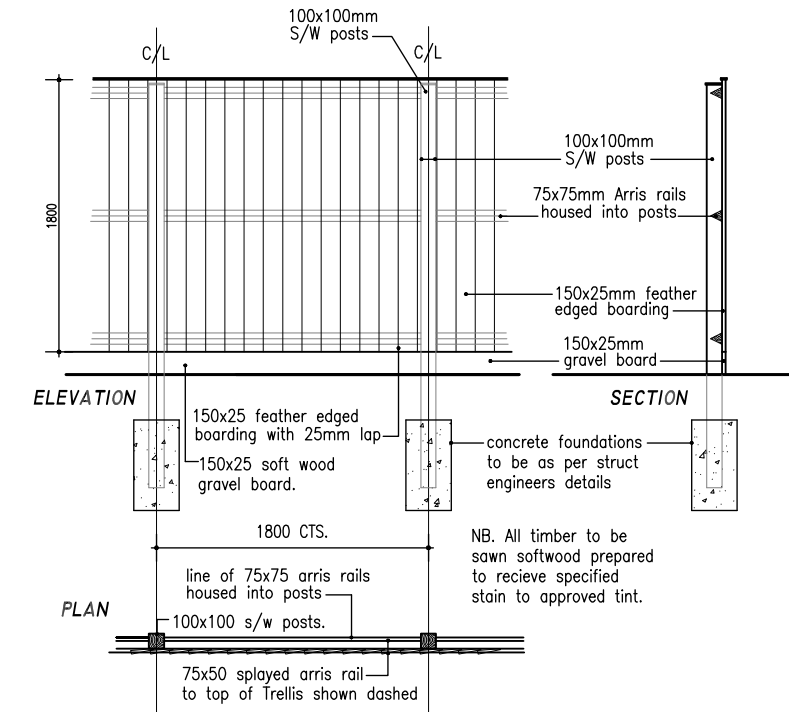
Plants that fail to thrive, are removed, uprooted or destroyed or die during the aftercare period will be replaced with equivalent plants as soon as possible during the following planting season. Replacements shall be of the same size and species as that originally specified unless otherwise agreed with the Planning Authority. Defects shall be made good by the end of the planting season of the year in which the defect is identified.

1. *Shrub areas- all dead stock will be replaced by the end of the next growing season to obtain 100% stocking.*
2. *Cell grown/root containers and transplant planting- throughout the aftercare period all dead stock is replaced at the end of the next growing season to obtain 90% stocking.*
3. *Standard and heavy standard trees- throughout the aftercare period all dead stock is replaced at the end of each growing season.*



## Boundary Treatment

The boundary treatment for the application site will be a 1.8m high timber fence as shown below.



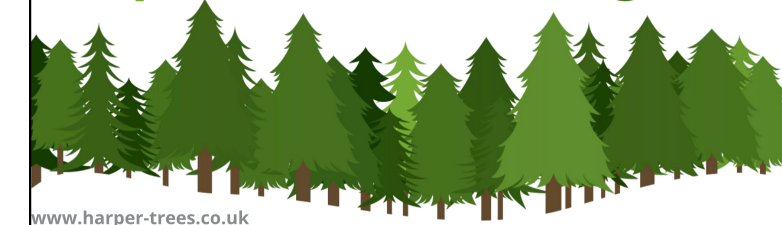
Please note that post holes must be lined with a damp proof membrane where they are within the root protection ares of retained trees. This is to protect roots from toxic leachate emitted by curing concrete.

## Schedule of Implementation

Once the construction phase has been complete, the landscaping will proceed as follows: -

1. Planting of trees and shrubs.
2. Installation of solar lighting.
3. Preparation of soil in turfed are and laying of turf.
4. Installation of grass concrete pavers (these are to be left unplanted until the end).
5. Laying of concrete paver in driveway.
6. Construction of bicycle and bin storage facilities.
7. Installation of disabled access ramps.
8. Planting of grass concrete pavers as specified.

## Harper tree consulting



www.harper-trees.co.uk

28 Rodbourne Close, Lymington, Hampshire, SO41 0LW.

Email: jonharper@harper-trees.co.uk

Tel: 07982 911104 or 01590 436272

www.harper-trees.co.uk

www.treesurveyshampshire.co.uk

Client:	Mr Challuri	Date:	October 09th 2020
		Ref:	2020106/LSP002
Site:	17 Northdown Close Ruislip	Scale @ A3:	1:100
		Title:	Landscaping Plan (2)