



Project Name	Hillingdon Court Park Pavilion
Client	Mr Maksim Seleznirov
	Green Papa/Maximum Construction
Version	V7 Design
Date	03/10/25

# CONTENTS

## A. Site Analysis

1. Analysis
2. Notes for Concept design
3. Environmental and sustainability statement and notes for BNG

## B. Masterplan

1. Masterplan with annotations
2. General Arrangement plan
3. Setting Out plan

## C. Technical drawings

### C1. Details of Soft Landscaping

- 1.a Planting plans - Trees and Shrubs and Example Perennial beds
- 1.b Written specification of planting and cultivation works to be undertaken
- 1.c Schedule of plants giving species, plant sizes, and proposed numbers/densities where appropriate

### C2. Details of Hard Landscaping to include initial material and finish suggestions

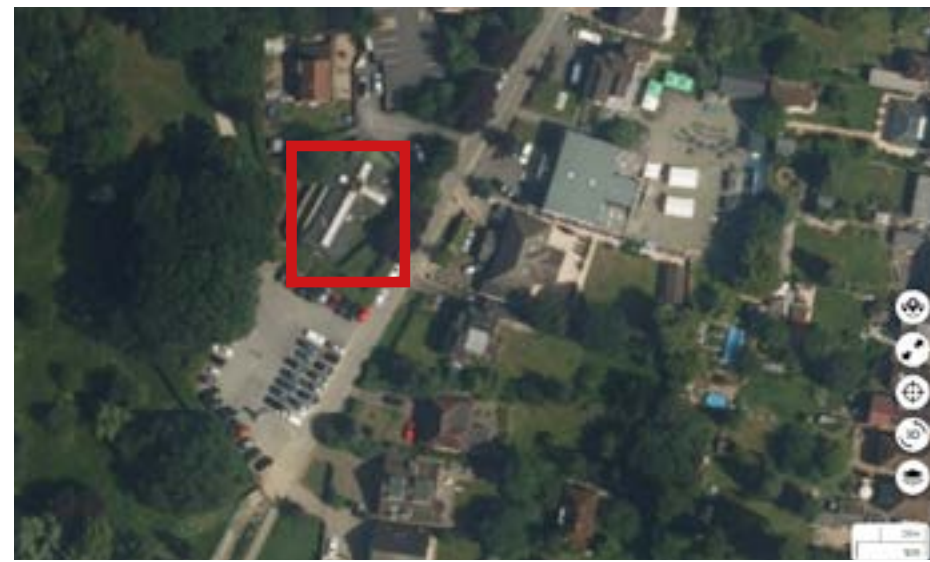
- 2.a Refuse Storage
- 2.b Cycle Storage
- 2.c Means of enclosure/boundary treatments
- 2.d Car Parking Layout
- 2.e Hard Surfacing Materials
- 2.f External Lighting

### C3 Coffee kiosk





# A.1. SITE ANALYSIS



## Location

The site is situated on the edge of Hillingdon Court Park.

The park is a few hectares large, with a small encircled woodland area, with tennis courts, a couple of pitches, an out door gym and children's play area.

The park has a fine spread of early/mid-19th century parkland oaks, with older trees, some quite massive, plus one large clump of oak creating a woodland area, and another smaller clump. A fairly recent plantation has mixed tree species including oak, silver birch, poplar, aspen, sycamore and other species. Near the tennis courts are ornamental rose gardens and a hedged garden with conifers, shrub beds and specimen trees.

A small stream runs through the park and Hillingdon has built a pond in the corner of the park most prone to flooding. This will hold up to 850 cubic metres of water in situ following rainfall.

This will flow into an adjoining ditch and protect homes in the north-east corner of the park against flooding.

Following large downpours, the water from Hillingdon Court Park will flow into nearby Elephant Park. This flood alleviation measure has also boosted local biodiversity.

The park is of Local Importance for Nature Conservation.

The western part of the site falls within the Green Belt.



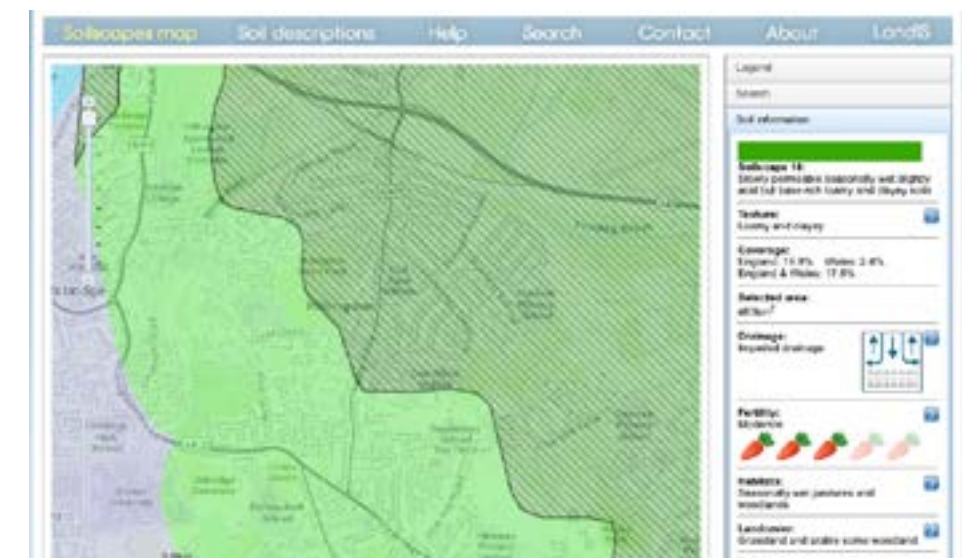
## Aspect, Soil and Flora

Both rear gardens are SW facing, with the front garden NE facing.

The soil conditions are (LandIS) Soilscape 18 - Slowly permeable seasonally wet slightly acid but base-rich loamy and clayey soils.

The site is edged on two sides by a mix of mature *Corylus Avellana* and *Prunus* (unspecified) as well as some *Ilex* shrubs. There are a couple of *Betulas* and *Ulmus* in the Front Garden and two *Salix* in the Rear Garden.

The rest of the site is covered in brambles, a few wild iris.



## A.2. SITE NOTES FOR CONCEPT DESIGN

### **The Architecture of the house**

The house will be built in an Arts and Crafts style (from drawings) in keeping with the character and appearance of the immediate street scene and the Hillingdon Court Park Area of Special Character, with Brickwork Chimney and Plinth and Oak finished posts to the front porch and Timber barge and fascia boards.

The gardens will be designed to be sympathetic to the Arts and Crafts Garden style. The aim of an Arts and Crafts garden is to link and create a unity between the house and garden.

The palette for planting will complement the building materials, helping the garden to sit comfortably and harmoniously with the house.

Arts and Crafts planting tended to be more formal around the house, herbaceous borders and climbers were held in check by strict geometric lines, defined by paved terraces, paths, walls and clipped hedges. As you head further out towards the edges of the garden, the design gets looser and more naturalistic.

Woodland gardens planted with trees, shrubs and bulbs are common in Arts and Crafts gardens at the far reaches of the garden. Climbing roses and other vines on the outside of the house can give the feel that the house is part of the garden and not just attached to it





## A.3. ENVIRONMENTAL AND SUSTAINABILITY STATEMENT AND NOTES FOR BNG

This design has been conceived to make a positive contribution to the environment.

**Hardscaping** chosen for the driveway and the terrace around the house is permeable and use of concrete has been minimised in the construction.

**Materials** used in the Bike Shed, Garden tool shed and any other outbuilding are from suppliers that source certified sustainable timber and materials, preferably from within the UK.

**Plants have been chosen to attract pollinators with a predominantly perennial mix bring biodiversity to the beds.**

**See Section C I Soft landscaping for detail**

- **Mixed hedging** approved by the RSPB for encouraging shelter, food and biodiversity on the borders of the site has been added to the existing native hedges which are species-rich, providing a huge variety of resources for wildlife of berries, seeds, and flowers. Insects rely on native hedging plants in order to survive. Mixed native hedges provide an entire ecosystem in which plants, animals, insects and microorganisms all co-exist together to form a balanced, thriving biodiversity. Colourful foliage throughout every season, offers continuous, vibrant year-round interest drawing on the landscape around the to sit comfortably and harmoniously within the local natural environment.
- **Trees and Shrubs** - existing trees identified to retain have been kept within the scheme and numerous new trees and large shrubs are to be planted chosen to support wildlife with berries and flowers as well as providing habitat at both ground level (shrubs) and in branches (trees).
  - New trees: 3 x *Malus domestica*, 4 x *Prunus ceracifera*, 3 x *Photinia fraseri*, 2 x *Prunus domestica*
  - New shrubs : Tall shrubs to include *Choisya ternata*, *Olearia macrodonata*
  - Medium Shrubs to include *Daphne bholua*, *Osmanthus x burkwoodii*, *Viburnum davidii*
  - Low shrubs to include *Pittisporum tenuifolium* ' Golf Ball' and 'Tom Thumb', *Euonymus fortunei*
- **Hedges**
  - External Hedge RSPB Approved Economy Bird Friendly Hedging (British Native Mix - Hedges Direct) planted at 3 shrubs per 2 meters
  - Internal Hedge *Thuja* or *Prunus laurocerasus* (Cherry laurel) inside boundary planted at 1 plant per 800mm

**Habitat - See General Arrangement for location**

3 x Bird boxes are to be situated in existing mature trees T1, T6 and T7 or T8 .

1 x Bat box to be installed - Suitable Bat box: Vincent Pro Bat Box made from the tried and tested design by the Vincent Wildlife Trust who has been pioneering mammal conservation for 40 years. Highly effective bat box proven with at least 7 species -

Siteing: 2m minimum above the ground - preferably in a partially sunny spot under eaves of Tool shed but not under artificial light and where rain can directly access box.

Log piles to be introduced at the SW corner of the garden for attracting wildlife into the site and to support a multitude of different insects, provide a refuge and hunting ground for small mammals, reptiles and amphibians, and shelter for over-wintering and hibernating wildlife.



B.I. MASTERPLAN

Bicycle shed and Bin storage

Thuja or Cherry Laurel Hedging

Garden Tool shed

Outdoor sauna

3 x Malus domestica

Wooden Featherboard fencing panels with trellis top-Jacksons

Turf Lawn with Brown steel edging - Everedge

Bed E - Perennials and Shrubs

Dining and sun terrace

Flowering shrubs to screen the terrace

Climbing roses along fencing

Coffee kiosk

Bed B - Perennials and Shrubs

3 x Prunus ceracifera underplanted with Spring bulbs

Thuja or Cherry Laurel Hedging (internal to boundary) with Ornamental iron fencing from Jacksons Fencing Standard style

RSPB Approved Economy Bird Friendly Hedging

Low level brick wall with coping

Wooden Featherboard fencing panels with trellis top-Jacksons

Driveway automated iron gate with low brick wall and brick piers

Resin bound permeable gravel - The Resin Mill - Autumn  
Fall of 1:75 sloping away from garage door

Bed A - Perennials and Shrubs

Clay pavers laid in stretcher bond with 2-3mm nominal joints filled with jointing sand - Vande Moortel or similar

RSPB Approved Economy Bird Friendly Hedging

Beds C & D- Perennials and Shrubs

3 x Malus domestica

Sheet Notes

Do not scale this drawing

All dimensions in millimetres

All dimensions indicative only

All dimensions must be checked on site & any discrepancies verified with the landscaper or garden designer

Drawing based on survey information by others

Drawing to be read with all other issued information

Refer to architects' information for all architectural elements

Refer to engineering information for all engineering elements

All footings, foundations & structural elements to engineer's design and specification

Any discrepancies between the drawings and site conditions to be brought to the attention of the garden designer for review

1

Masterplan - Hillingdon Court Park Pavilion

Scale: 1:200

0510 M

N

DateNo.ZoneRevision Notes

Project Title

Hillingdon Court Park Pavilion

Sheet Scale

1:200 @A3

Total Sheets

Drawn By

L. Munton

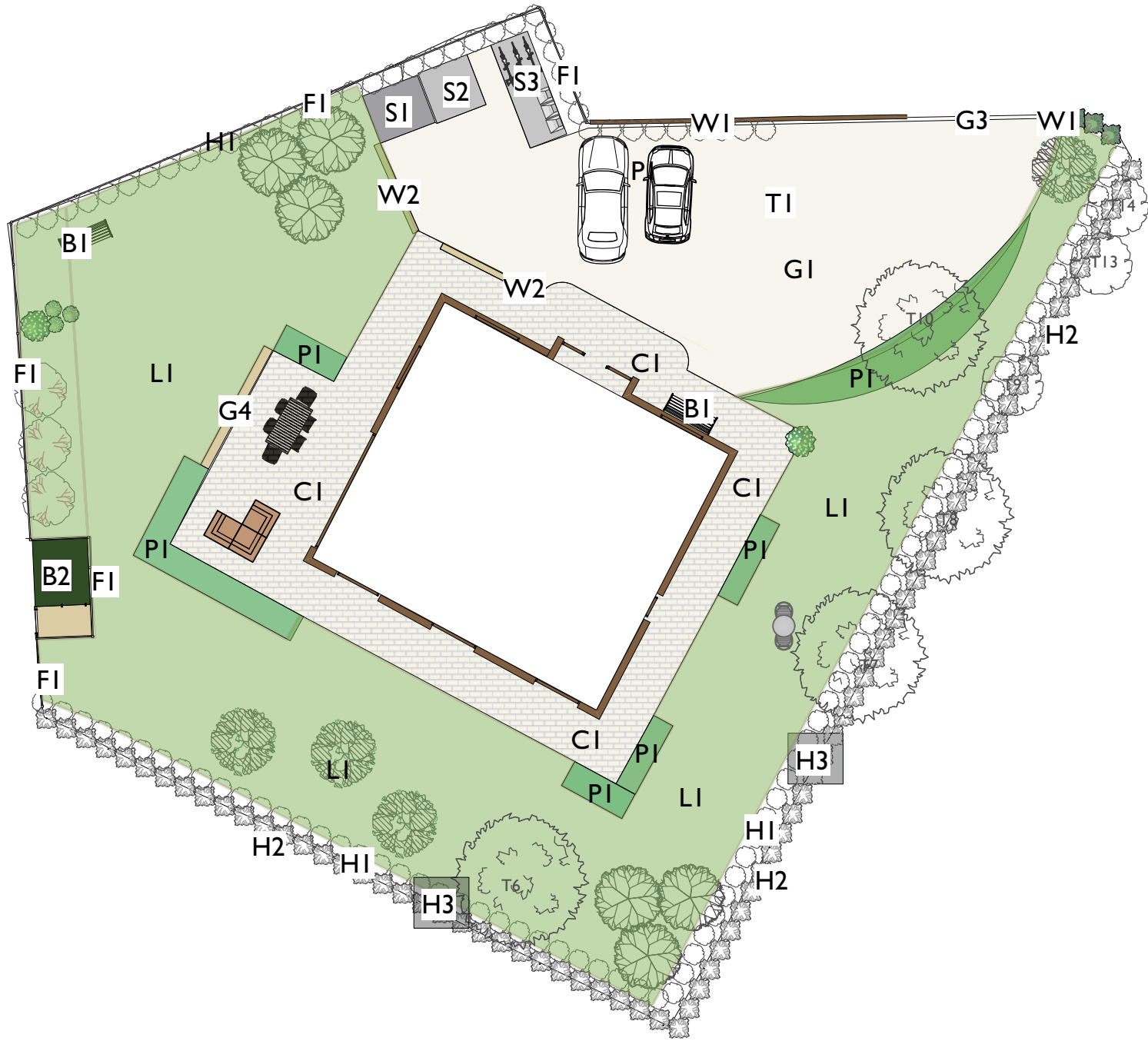
Reviewed By

File Name

Hillingdon V7 011025.vwx

Status code

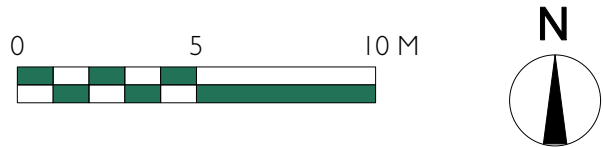
B.2. GENERAL ARRANGEMENT



2 General Arrangement - Hillingdon Court Park Pavilion  
Scale: 1:200

**Sheet Notes**

Do not scale this drawing  
All dimensions in millimetres  
All dimensions indicative only  
All dimensions must be checked on site  
& any discrepancies verified with the landscaper or garden designer  
Drawing based on survey information by others  
Drawing to be read with all other issued information  
Refer to architects' information for all architectural elements  
Refer to engineering information for all engineering elements  
All footings, foundations & structural elements to engineer's design and specification  
Any discrepancies between the drawings and site conditions to be brought to the attention of the garden designer for review

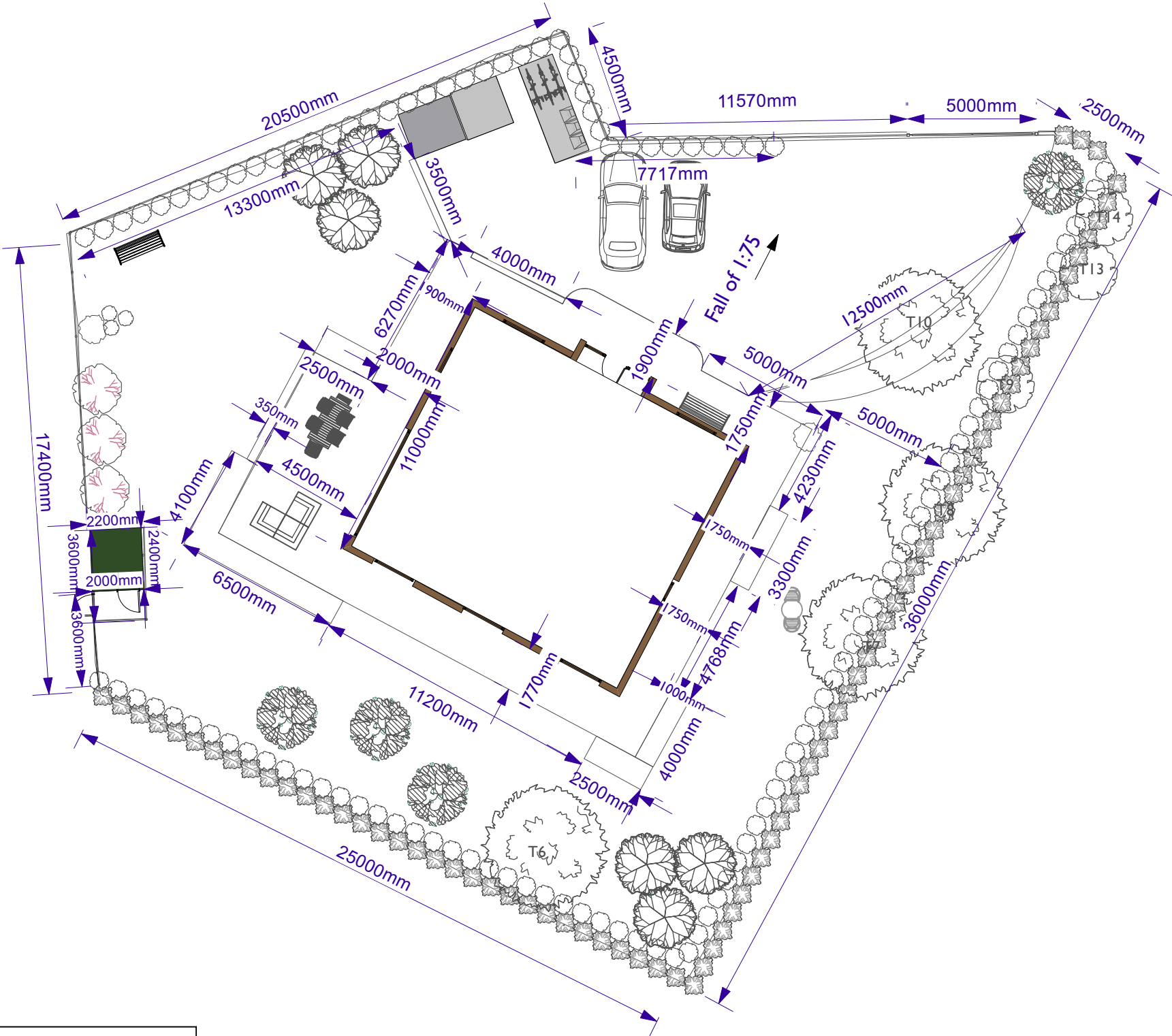


- LI** Lawn - Turf lawn with brown steel edging Everedge
- G1** Resin bound permeable gravel - The Resin Mill - Autumn Fall of 1:75 sloping away from garage door
- C1** Clay pavers laid in stretcher bond with 2-3mm nominal joints filled with jointing sand and min slope of 1-2%  
Paver edging supported by sand cement - Slot drains where required Vande Mortel SeptimA Olive
- W2** Low level brick wall ET Clay Titan Multi Brick - Grey with coping stones
- S1** Wooden Outdoor Sauna on concrete base - Urban Cedar 2200mm(L)x1800mm(W)x 2310mm(H)
- S2** Tool shed to match Bike and bin shed on concrete base Garden Trellis Company
- S3** Bicycle and Bin store on concrete base - Brighton Bike Sheds - Classic Bike Shed
- G3** Automated metal railing gate - To be decided
- PI** Planting beds with brown steel edging - Everedge
- FI** Wooden Featherboard fencing panels 1.80m H with trellis top - Jacksons  
Gravel boards for use with Slotted posts (including 2 Hedgehog friendly gravel boards)
- WI** Brick wall ET Clay Titan Multi Brick - Grey 1.8m across driveway with 2m capped piers to be determined by gate
- H1** Thuja occidentalis 'Brabant' Hedge
- H2** RSPB Approved Economy Bird Friendly Hedging
- H3** Ornamental fencing Jacksons Fencing Standard style
- BI** Bench seating - to be decided
- B2** Parkway Cafe kiosk 2400mm x 2000mm with access door in fence onto park  
Surrounding external fencing clad in Artificial green foliage (see images)
- G4** Sandstone step from terrace to grass (tbc)

Date	No.	Zone	Revision Notes
			
Project Title Hillingdon Court Park Pavilion			
Sheet Scale 1:200 @A3		Total Sheets	
Drawn By L. Munton		Reviewed By	
File Name Hillingdon V7 011025.vwx			
Status code Code - Description S0 WIP - INITIAL STATUS			

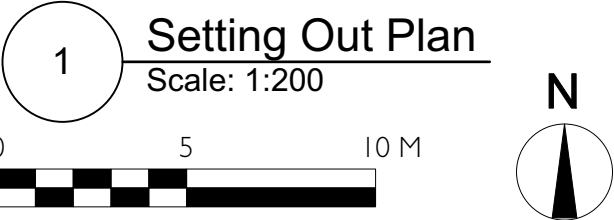


B.3. SETTING OUT PLAN



**Sheet Notes**

Do not scale this drawing  
All dimensions in millimetres  
All dimensions indicative only  
All dimensions must be checked on site  
& any discrepancies verified with the landscaper or garden designer  
Drawing based on survey information by others  
Drawing to be read with all other issued information  
Refer to architects' information for all architectural elements  
Refer to engineering information for all engineering elements  
All footings, foundations & structural elements to engineer's design and specification  
Any discrepancies between the drawings and site conditions to be brought to the attention of the garden designer for review



Date	No.	Zone	Revision Notes
			
Project Title Hillingdon Court Park Pavilion			
Sheet Scale 1:200 @A3		Total Sheets	
Drawn By		Reviewed By	
File Name Hillingdon V7 011025.vwx			

# C.I. SOFT LANDSCAPING - Planting Plan - Trees and Shrubs



Tall shrubs to include *Choisya ternata*, *Olearia macrodonata*, *Photinia*  
Medium Shrubs to include *Daphne bholua*, *Osmanthus x burkwoodii*, *Viburnum davidii*  
Low shrubs to include *Pittisporum tenuifolium* ' Golf Ball' and 'Tom Thumb', *Euonymus fortunei*

External Hedge RSPB Approved Economy Bird Friendly Hedging (British Native Mix - Hedges Direct)  
planted at 3 shrubs per 2 meters  
Internal Hedge *Thuja* or *Prunus laurocerasus* inside boundary planted at 1 plant per 800mm  
*Malus domestica*, *Prunus cerasifera* and *Magnolia grandiflora* underplanted with Spring bulbs

Date

No.

Zone

Revision Notes



LAUREN  
MUNTON  
GARDENS

Project Title

Hillingdon Court Park Pavilion

Sheet Scale

1:200 @A3

Total Sheets

Drawn By

L. Munton

Reviewed By

File Name

Hillingdon V7 011025.vwx

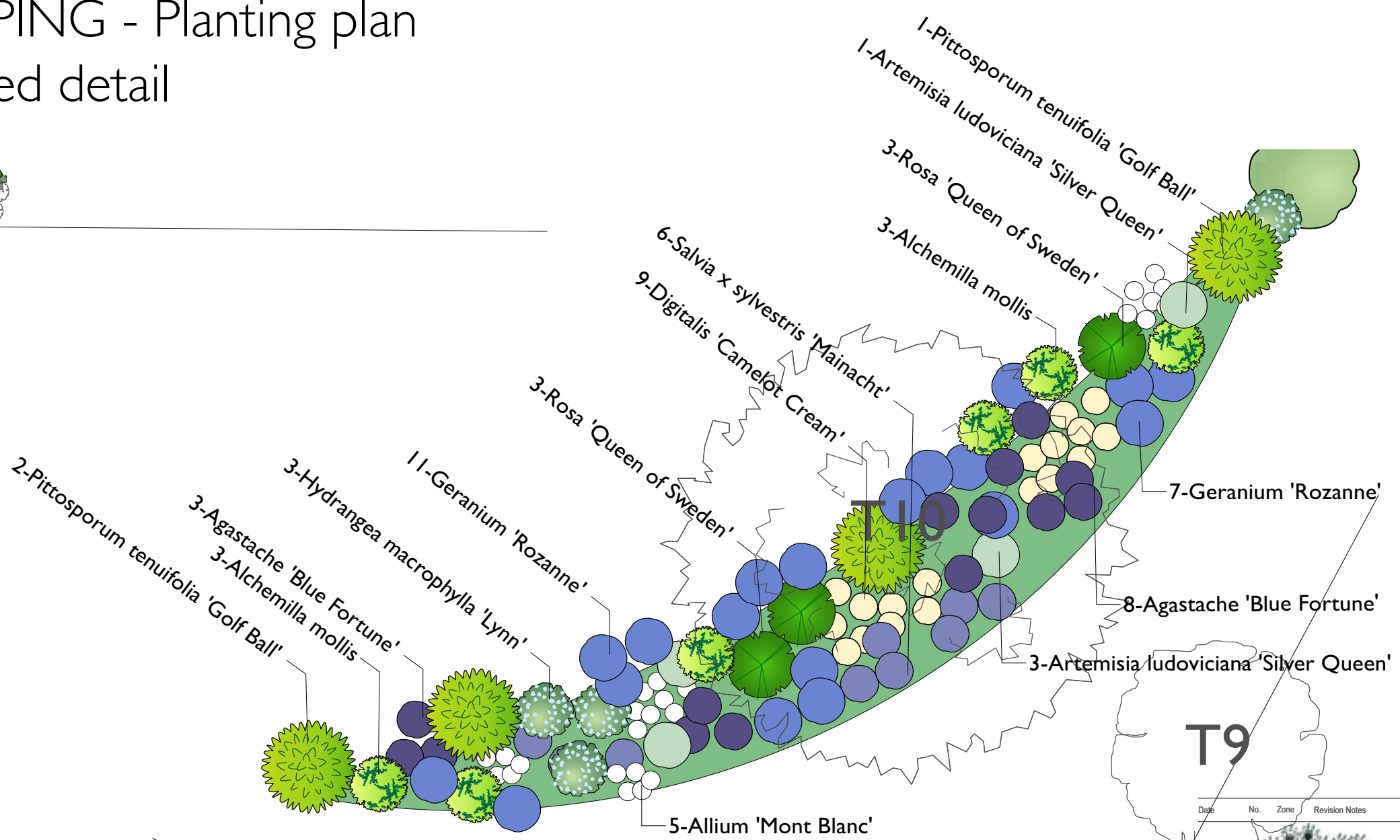
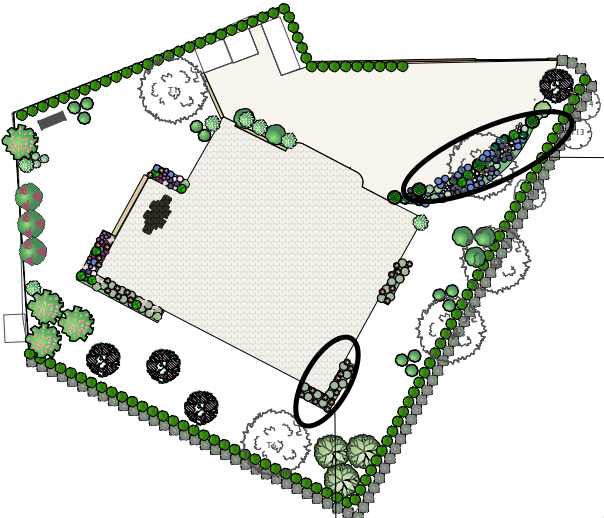
Status code

Code - Description

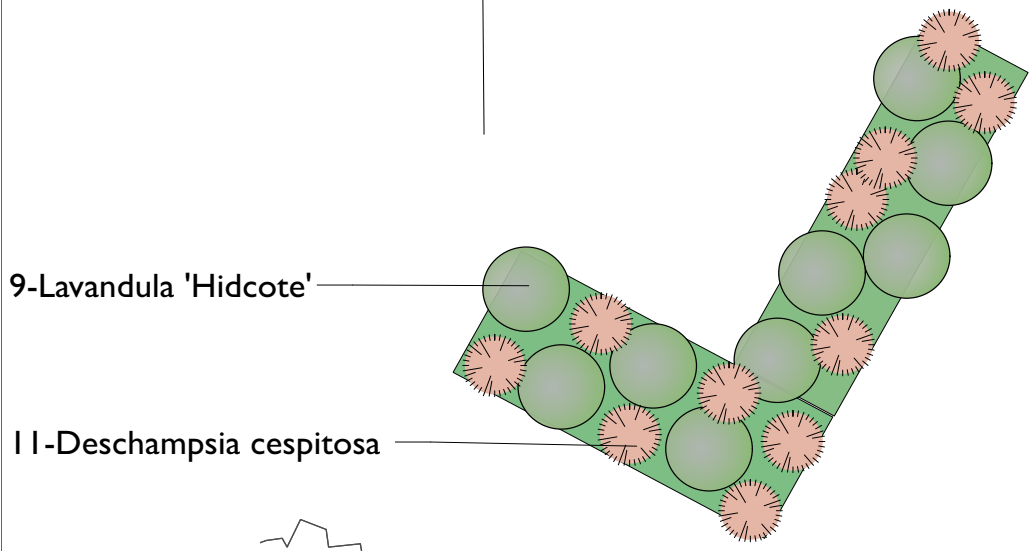
S0 WIP - INITIAL STATUS

# C.I. SOFT LANDSCAPING - Planting plan

## Example Planting bed detail



2 **Bed A**  
Scale: 1:50



4 **Bed C - Planting**  
Scale: 1:50

T9

Date	No.	Zone	Revision Notes

**LAUREN MUNTUN GARDENS**

Project Title  
Hillingdon Court Park Pavilion

Sheet Scale AS NOTED @A3	Total Sheets
Drawn By L. Muntun	Reviewed By
File Name Hillingdon V5 150824.vwx	
Status code S0 WIP - INITIAL STATUS	



# C.I. SOFT LANDSCAPING - Schedule of Plants

Planting Schedule Hillingdon

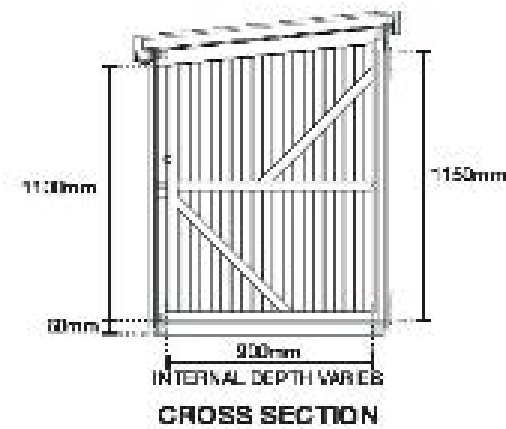
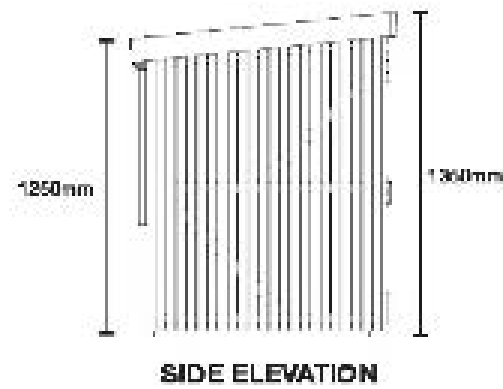
Category	Latin Name	Quantity	Scheduled Size
Trees	Prunus cerasifera	4	10L
Trees	Malus x domestica 'Granny Smith'	3	10L
Shrubs	Perovskia atriplicifolia 'Blue Spire'	3	10L
Shrubs	Hydrangea arborescens 'Annabelle'	1	10L
Shrubs	Medium Shrub 03	5	10L
Shrubs	Pittosporum tenuifolia 'Golf Ball'	4	10L
Shrubs	Photinia x fraseri	3	20L
Shrubs	Low Shrub 02	7	10L
Shrubs	Tall Shrub 02	4	20L
Shrub-Hedge	RSPB Mixed Native Hedging	80	Bare root
shrub	Hydrangea macrophylla 'Lynn' USPP 20019	7	10L
shrub	Hydrangea paniculata 'Jane' USPP 22330	11	10L
Roses	Rosa 'Queen of Sweden'	3	10L
Roses	Rosa 'Munstead Wood'	6	10L
Perennials	Digitalis 'Camelot Cream'	18	2L
Perennials	Artemisia ludoviciana 'Silver Queen'	4	2L
Perennials	Salvia x sylvestris 'Mainacht'	9	2L
Perennials	Alchemilla mollis	6	2L
Perennials	Geranium 'Dreamland'	20	p9
Perennials	Monarda bradburiana	4	p9
Perennials	Lavandula angustifolia 'Hidcote'	28	2L
Perennials	Geranium 'Rozanne'	23	p9
Perennials	Iris 'Afternoon in Rio'	11	p9
Perennials	Agastache 'Blue Fortune'	20	p9
Perennials	Heuchera micrantha 'Chocolate Ruffles' P.P.# 8965	12	2L
Grasses	Deschampsia cespitosa	32	2L
Conifers	Thuja occidentalis	116	20L
Bulbs	Allium 'Mont Blanc'	26	Bulb



## C.2.a &b. HARD LANDSCAPING - Refuse storage and Cycle storage

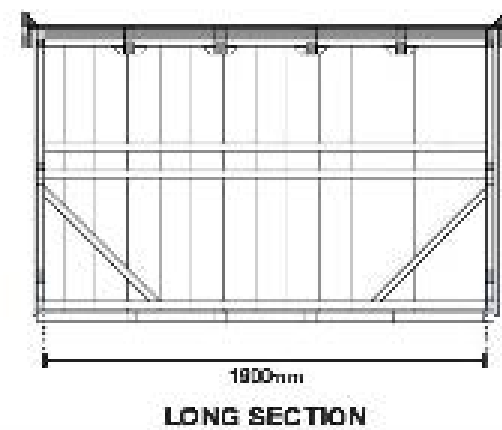
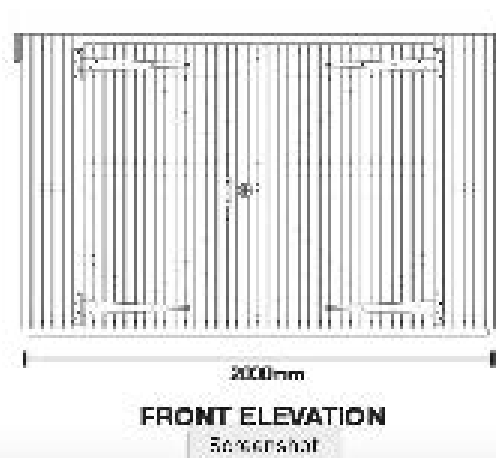


### Key Dimensions - 3 bike shed model



### Measurements Bike storage

2000mm W x 1000mm D x 1350mm H



### Measurements with Bike and Bin storage combined

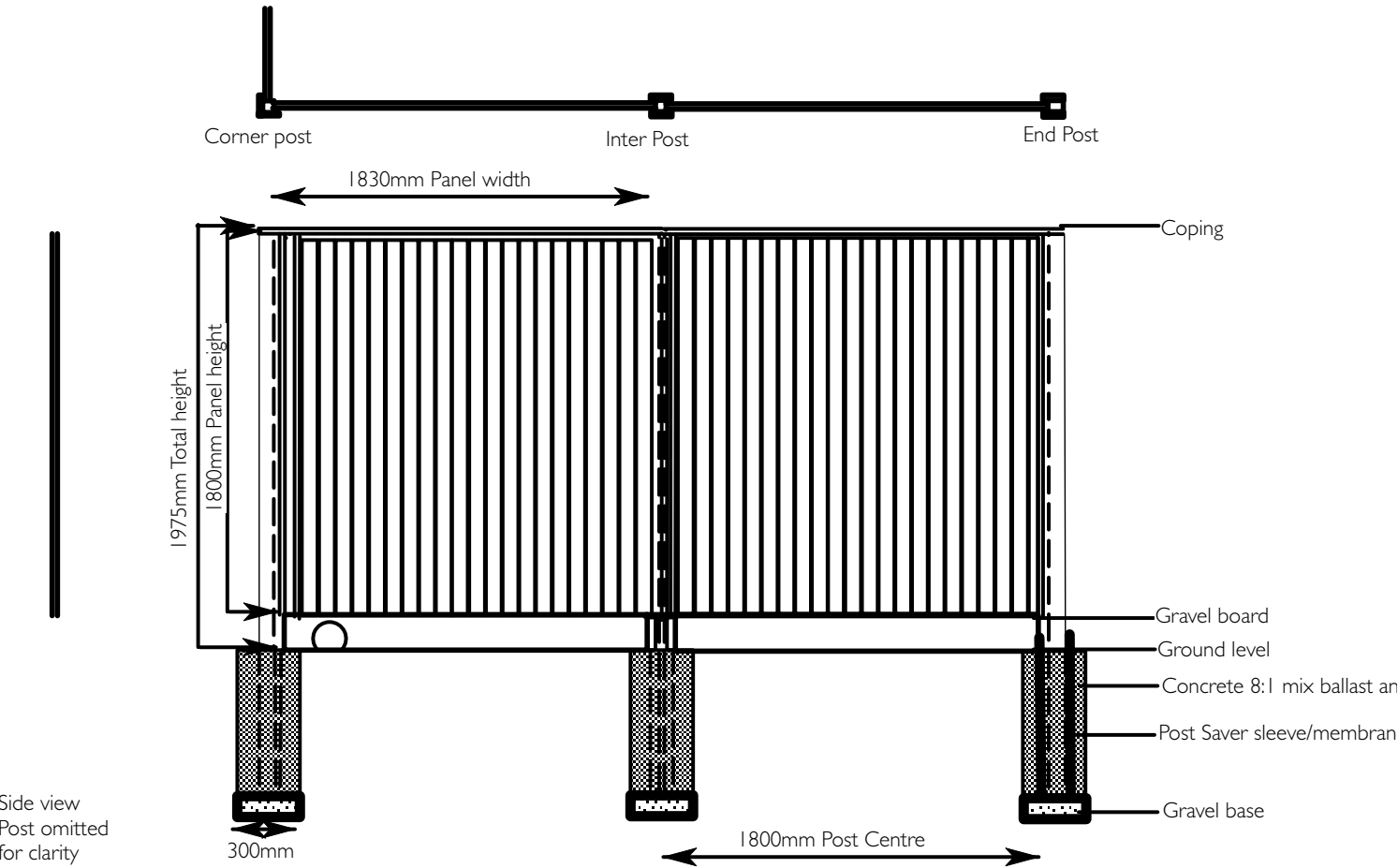
4000mm W x 1000mm D x 1350mm H



C.2.c. HARD LANDSCAPING - FENCING



Plan view (without coping strip for clarity)

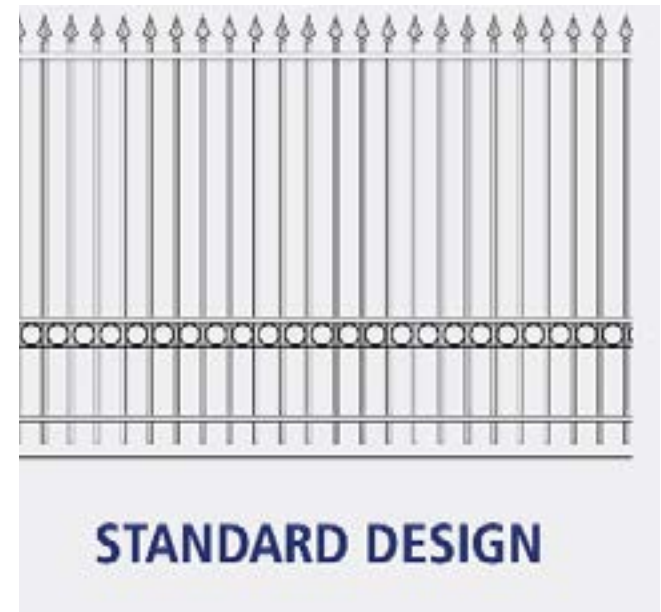


Wooden featherboard fencing panelswith trellis top (F1)



1 Jackson's Fencing (F1)  
A3 Scale: 1:50

Ornamental fencing (H3)

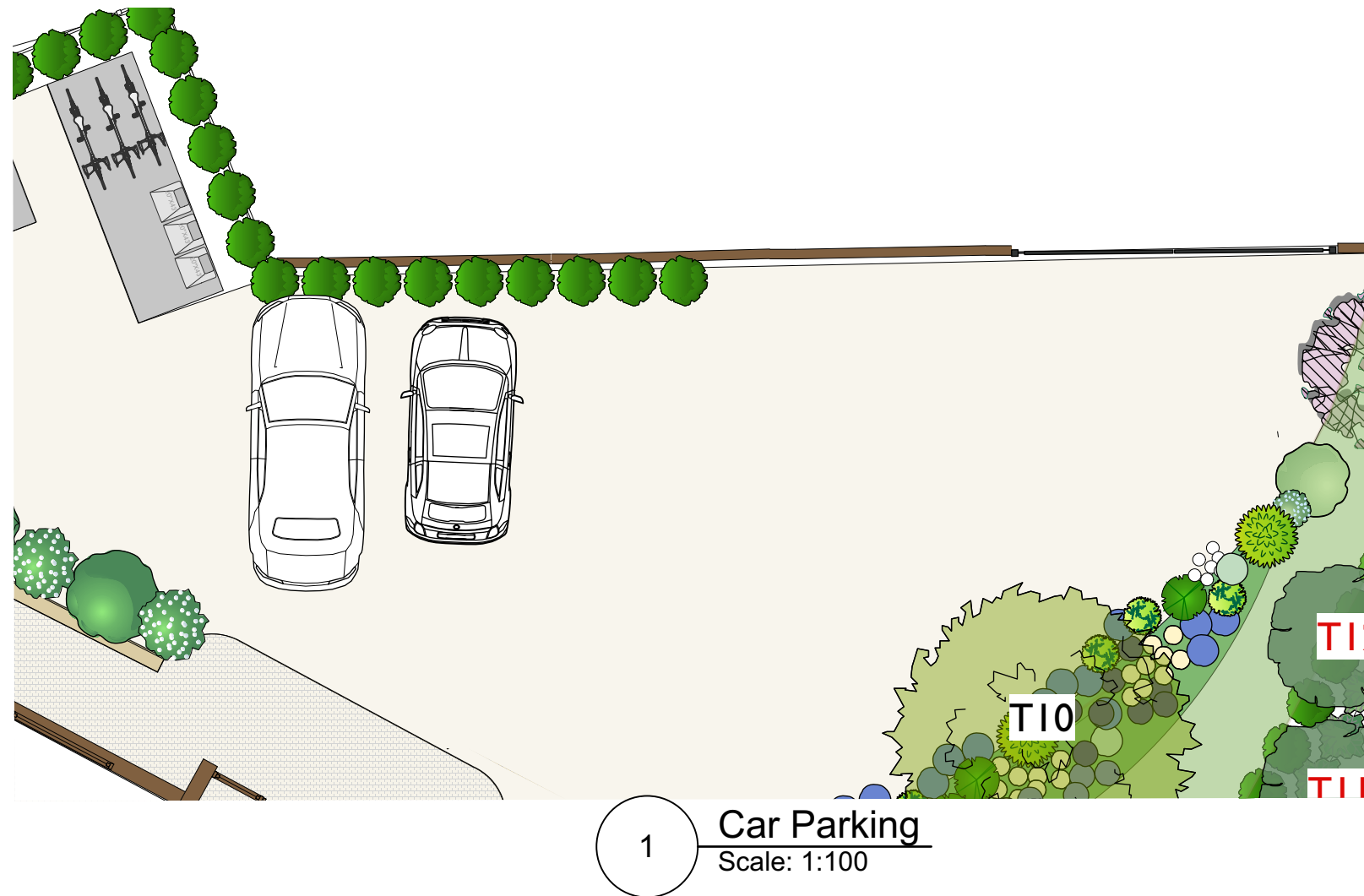


Sheet Notes

Do not scale this drawing  
All dimensions in millimetres  
All dimensions indicative only  
All dimensions must be checked on site  
& any discrepancies verified with the landscaper or garden designer  
Drawing based on survey information by others  
Drawing to be read with all other issued information  
Refer to architects' information for all architectural elements  
Refer to engineering information for all engineering elements  
All footings, foundations & structural elements to engineer's design and specification  
Any discrepancies between the drawings and site conditions to be brought to the attention of the garden designer for review



## C.2.d. HARD LANDSCAPING - Car Parking layout



## C2.e. HARD LANDSCAPING - Hard Surfacing Materials



Clay pavers laid in stretcher bond with 2-3mm nominal joints filled with jointing sand and min slope of 1-2% Vande Moortel SeptimA Olive  
Paver edging supported by sand cement - Slot drains where required



Bricks for driveway wall and piers  
ETClay Titan Multi brick - Grey  
<https://etbricks.co.uk/brick/titan-multi-brick/>



Driveway - Resin Bound gravel - The Resin Mill - Colour Cappuccino  
Fall of 1:75 sloping away from garage door



# 2.f. HARD LANDSCAPING - External lighting



1 Hunza Pure LED recessed path lights  
1-4 Quarters Copper - paths and  
parking lighting

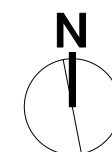
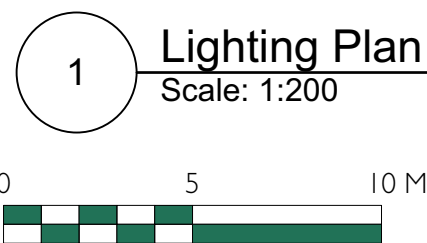
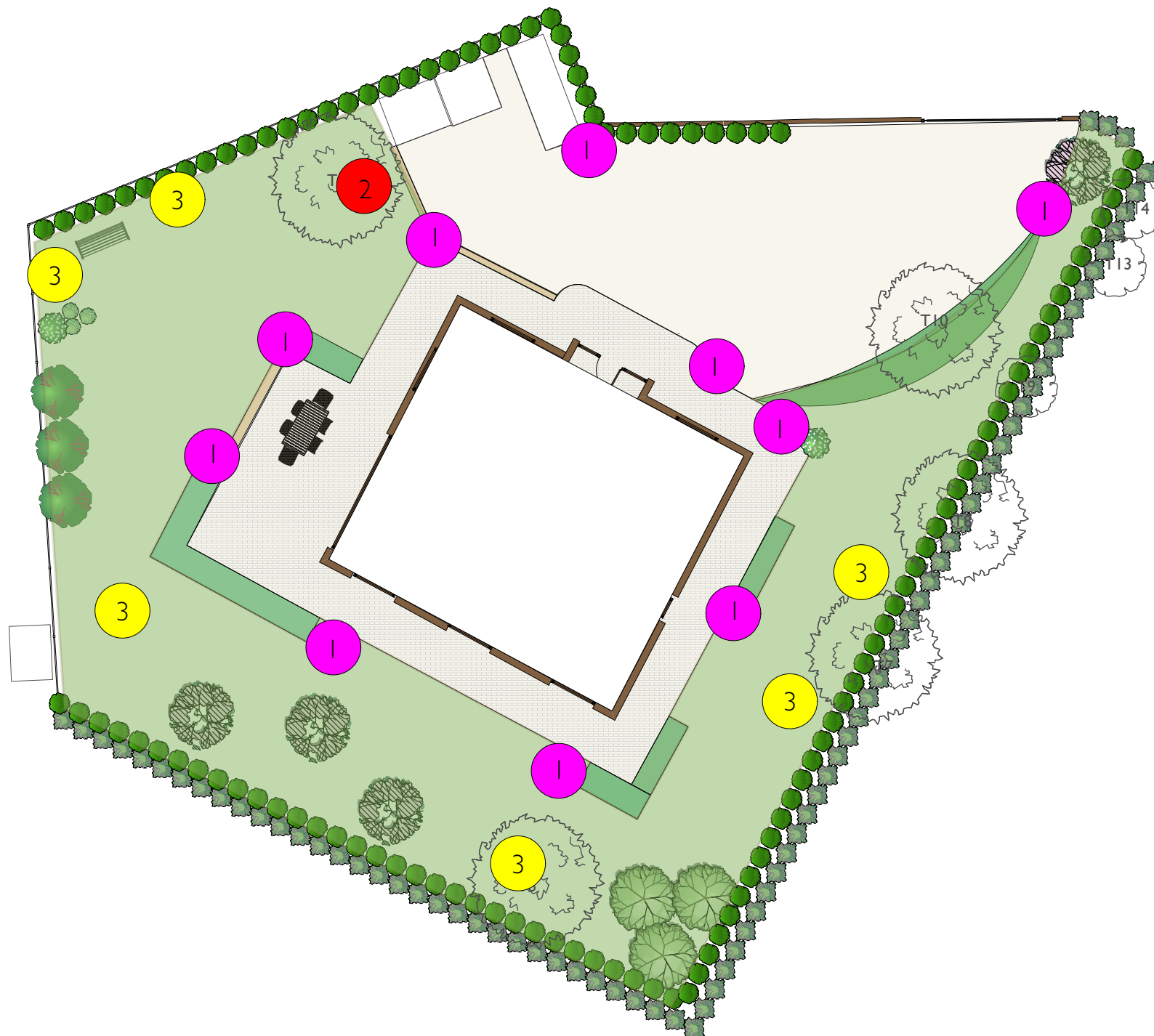



2 Hunza ST50 Pure LED Inground  
Uplighters - bronze - lighting large  
magnolia tree



3 LuxR M1 LED Spike Spotlights - Eco  
black (IP68) - lighting shrubs

- 1 Hunza Pure LED recessed path lights 1-4 Quarters Copper  
path and parking lighting
- 2 Hunza ST50 Pure LED Inground Uplighters - bronze -  
lighting large trees
- 3 LuxR M1 LED Spike Spotlights - Eco black (IP68) -  
lighting shrubs

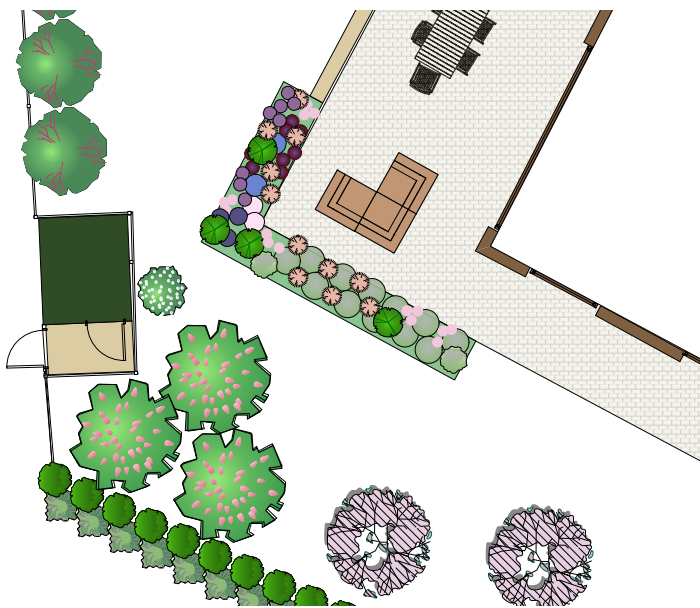


Date	No.	Zone	Revision Notes
<div></div>			
Project Title			
Hillingdon Court Park Pavilion			
Sheet Scale		Total Sheets	
1:200 @A3			
Drawn By		Reviewed By	
File Name			
Hillingdon V5 150824.vwx			



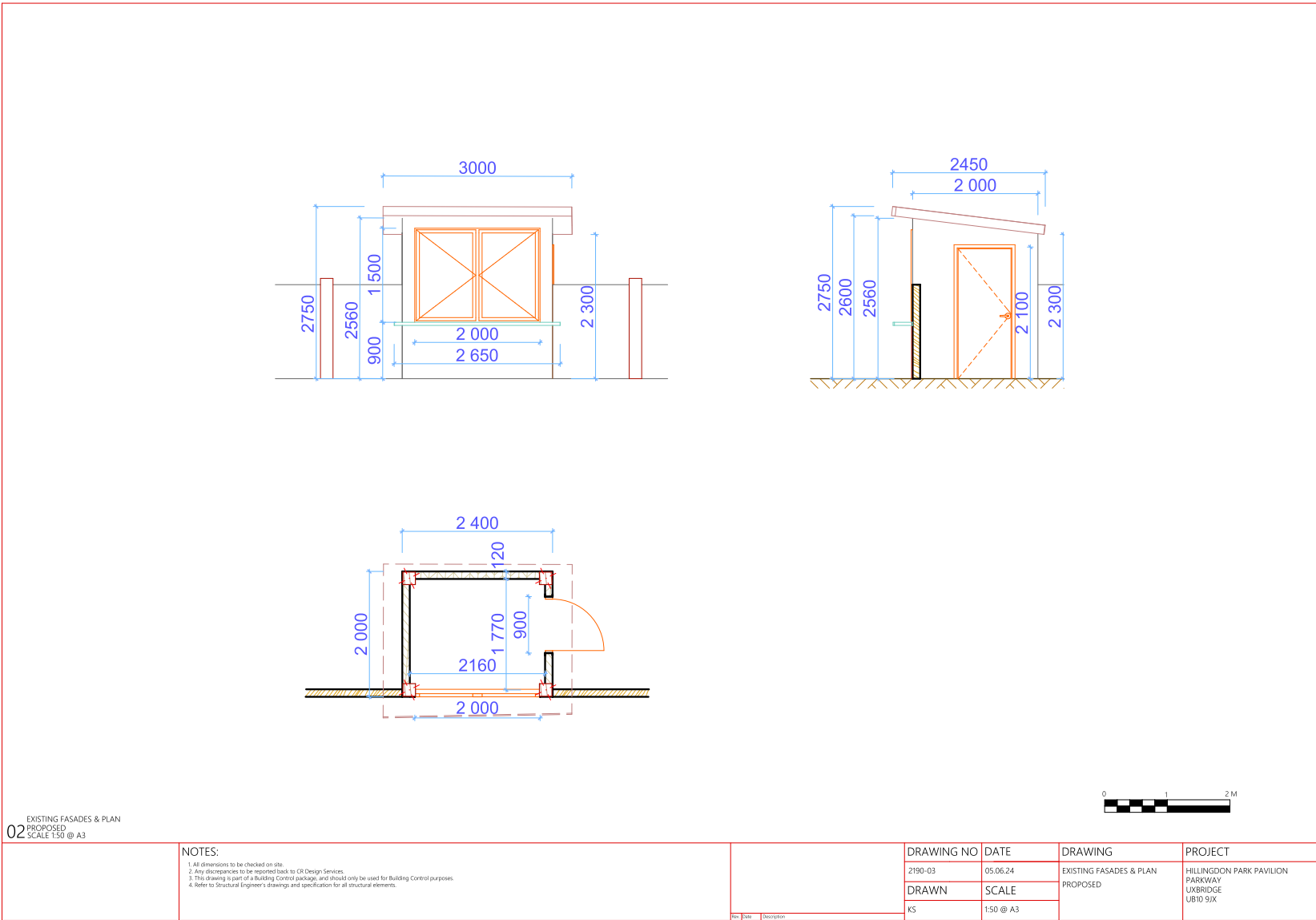
# 3. COFFEE KIOSK

## Location



Parkway Cafe Coffee Kiosk to be located on West border, with access door from the park side. The property fencing will be continued around the sides and back of the kiosk.

The fencing facing the park will be clad with artificial foliage for decoration. (tbc)



# REFERENCES AND SUPPLIERS

## Fencing

Jacksons Flat Top Weatherboard Fence Panels

1800mm (H) x 17000mm (17m) Length All panels are 1.83 wide

Gravel boards for use with Slotted Posts 1.83m x 140 x 28mm (including 2 Hedgehog friendly gravel boards

<https://www.jacksons-fencing.co.uk/fencing/traditional-fencing/featherboard>

## Ornamental fencing from Jacksons Fencing Standard style

[https://www.jacksons-security.co.uk/metal-railings/ornamental-fencing?sc\\_campaign=75F280A84FEE4F3EB634D35B379C3317](https://www.jacksons-security.co.uk/metal-railings/ornamental-fencing?sc_campaign=75F280A84FEE4F3EB634D35B379C3317)

## Bike and Bin Store

Brighton Bike Sheds

Classic bike shed for 3 bikes and 3 wheelie bins Scottish Larch

<https://www.brightonbikesheds.co.uk/product/classic-bike-shed/?cnf=vBXZ43>

## Outdoor Sauna

Urban Cedar Glass Rectangle Outdoor Sauna 7ft x 6ft

<https://www.urbancedarhottubs.co.uk/collections/urban-cedar-outdoor-sauna/products/urban-cedar-glass-rectangle-outdoor-sauna-7ftx6ft-best-seller>

## Garden Tool Shed

The Garden Trellis Company

<https://www.gardentrellis.co.uk/product/prestige-range/contemporary-shed>

## Resin Bound gravel

The Resin Mill - Colour Cappuccino

<https://theresinmill.co.uk/products/aggregates/resin-bound-gravel/cappuccino/>

## Clay Pavers

Vande Moortel SeptimA Olive

<https://www.vandemoortel-bricksandpavers.com/en/product/clay-pavers/septima/olive/>

## Bricks for driveway wall and piers

ETClay Titan Multi brick - Grey

<https://etbricks.co.uk/brick/titan-multi-brick/>

## Garden Lighting

LandscapePlus

<https://landscapeplus.com>

## Metal Electric Gates

<https://www.theelectricgateco.co.uk/metal-electric-gates.html>





Thank you

Contact details  
Lauren Muntongardens

Email: [hello@laurenmuntongardens.co.uk](mailto:hello@laurenmuntongardens.co.uk)  
Phone: 07776208214