



Project Name	Hillingdon Court Park Pavilion
Client	Green Papa
Version	V3.1 Design
Date	04/10/23

# CONTENTS

## A. Site Analysis

1. Analysis
2. Notes for Concept design

## B. Masterplan

1. Masterplan with annotations
2. General Arrangement plan
3. Setting Out plan

## C. Technical drawings

### I. Details of Soft Landscaping

- I.a Planting plans
- I.b Written specification of planting and cultivation works to be undertaken
- I.c Schedule of plants giving species, plant sizes, and proposed numbers/densities where appropriate

### 2. Details of Hard Landscaping to include initial material and finish suggestions

- 2.a Refuse Storage
- 2.b Cycle Storage
- 2.c Means of enclosure/boundary treatments
- 2.d Car Parking Layout
- 2.e Hard Surfacing Materials
- 2.f External Lighting





# A.I. SITE ANALYSIS



## Location

The site is situated on the edge of Hillingdon Court Park.

The park is a few hectares large, with a small encircled woodland area, with tennis courts, a couple of pitches, an out door gym and children’s play area.

The park has a fine spread of early/mid-19th century parkland oaks, with older trees, some quite massive, plus one large clump of oak creating a woodland area, and another smaller clump. A fairly recent plantation has mixed tree species including oak, silver birch, poplar, aspen, sycamore and other species. Near the tennis courts are ornamental rose gardens and a hedged garden with conifers, shrub beds and specimen trees.

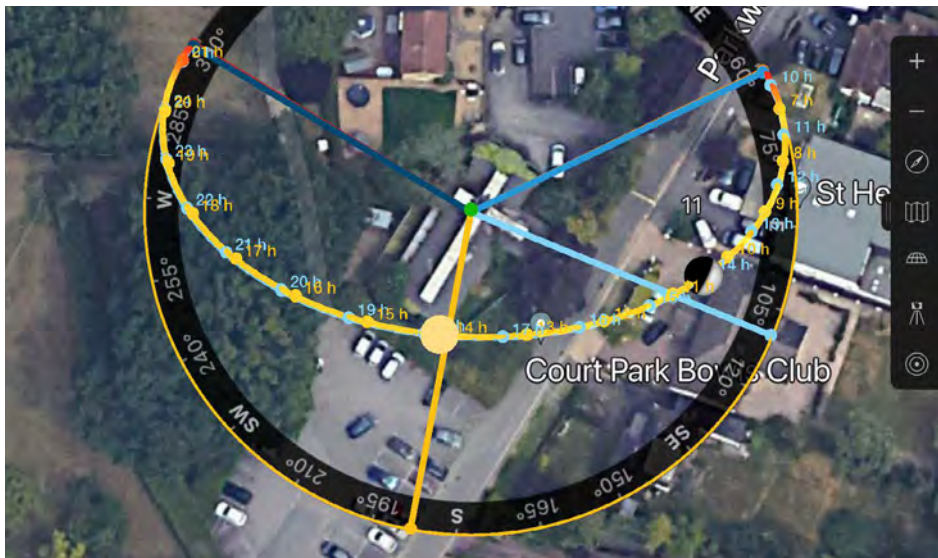
A small stream runs through the park and Hillingdon has built a pond in the corner of the park most prone to flooding. This will hold up to 850 cubic metres of water in situ following rainfall.

This will flow into an adjoining ditch and protect homes in the north-east corner of the park against flooding.

Following large downpours, the water from Hillingdon Court Park will flow into nearby Elephant Park. This flood alleviation measure has also boosted local biodiversity.

The park is of Local Importance for Nature Conservation.

The western part of the site falls within the Green Belt.



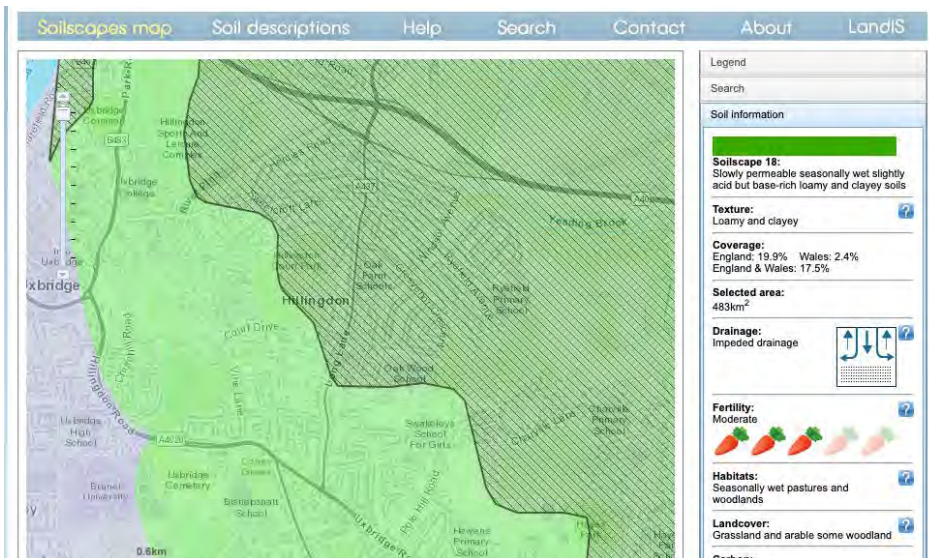
## Aspect, Soil and Flora

Both rear gardens are SW facing, with the front garden NE facing.

The soil conditions are (LandIS) Soilscape 18 - Slowly permeable seasonally wet slightly acid but base-rich loamy and clayey soils.

The site is edged on two sides by a mix of mature *Corylus Avellana* and *Prunus* (unspecified) as well as some *Ilex* shrubs. There are a couple of *Betulas* and *Ulmus* in the Front Garden and two *Salix* in the Rear Garden.

The rest of the site is covered in brambles, a few wild iris.





## A.2. SITE NOTES FOR CONCEPT DESIGN

### The Architecture of the house

The house will be built in an Arts and Crafts style (from drawings) in keeping with the character and appearance of the immediate street scene and the Hillingdon Court Park Area of Special Character, with Brickwork Chimney and Plinth and Oak finished posts to the front porch and Timber barge and fascia boards.

The gardens will be designed to be sympathetic to the Arts and Crafts Garden style. The aim of an Arts and Crafts garden is to link and create a unity between the house and garden.

The palette for planting will complement the building materials, helping the garden to sit comfortably and harmoniously with the house.

Arts and Crafts planting tended to be more formal around the house, herbaceous borders and climbers were held in check by strict geometric lines, defined by paved terraces, paths, walls and clipped hedges. As you head further out towards the edges of the garden, the design gets looser and more naturalistic.

Woodland gardens planted with trees, shrubs and bulbs are common in Arts and Crafts gardens at the far reaches of the garden. Climbing roses and other vines on the outside of the house can give the feel that the house is part of the garden and not just attached to it

### Environmental and Sustainability statement

The design has been conceived to make a positive contribution to the environment.

Hardscaping chosen for the driveway and the terrace around the house is permeable and use of concrete has been minimised in the construction.

Materials used in the Bike Shed, Garden tool shed and any other outbuilding are from suppliers that source certified sustainable timber and materials, preferably from within the UK.

Plants have been chosen to attract pollinators with a predominantly perennial mix bring biodiversity to the beds.

Mixed Native hedging on the borders of the site has been maintained and added to, as native hedges are species-rich, providing a huge variety of resources for wildlife of berries, seeds, and flowers. Insects rely on native hedging plants in order to survive. Mixed native hedges provide an entire ecosystem in which plants, animals, insects and microorganisms all co-exist together to form a balanced, thriving biodiversity.

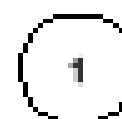
Colourful foliage throughout every season, offers continuous, vibrant year-round interest drawing on the landscape around the to sit comfortably and harmoniously within the local natural environment.



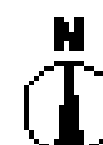


Bicycle shed and Bn storage  
 Cherry Laurel (*Prunus laurococcus*) hedging  
 Garden Tool shed  
 Outdoor sauna  
 Existing tree T1 *Salix caprea*  
 Wooden Featherboard fencing panels with trellis top-jacks  
 Self binding Gravel path to seating and sauna  
 Turf Lawn with Corten steel edging - Everedge  
 Bed E - Perennials and Shrubs  
 Climbing roses along fencing  
 Flowering shrubs to screen the terrace  
 Council Refuse Bin to be relocated away from property  
*Prunus cerasifera* underplanted with Spring bulbs  
 Full sun terrace  
 New Thuja hedging  
 Cherry Laurel (*Prunus laurococcus*) hedging with Green wire fencing between Thuja hedging and Laurel

Wooden Featherboard fencing panels with trellis top-jacks  
 Driveway automated iron gate with low brick wall and brick piers  
*Magnolia grandiflora* underplanted with bulbs and shrubs  
 Resin bound permeable gravel - The Resin Mill - Cappuccino  
 Fall of 1:75 sloping away from garage door  
 Bed A - Perennials and Shrubs  
 Clay pavers laid in stretcher bond with 2-3mm nominal joints filled with jointing sand - Vande Moortel or similar  
 Existing trees T7/T8 - *Prunus domestica*  
 Bed B - Lavender hedge in 3 sections  
 Dining terrace  
 Bed C & D - Perennials and Shrubs  
 Existing tree T6 - *Prunus cerasifera* underplanted with Spring bulbs



**Masterplan - Hillingdon Court Park Pavilion**  
 Scale 1:500

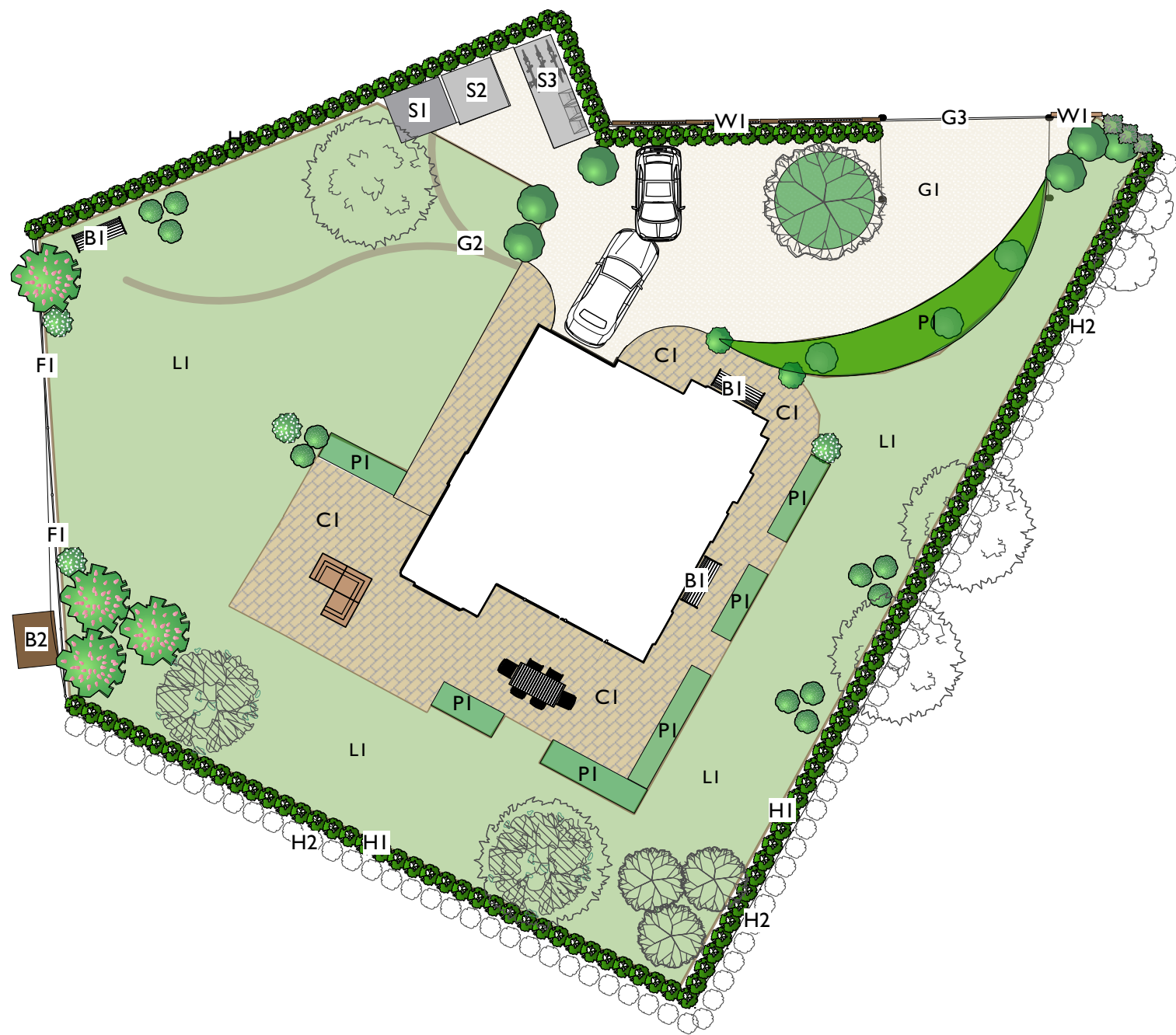


Hillingdon Court Park Pavilion

DATE	12/01/2024
BY	L. Munton
FOR	Client

10/01/2024 - 10/01/2024

B.2. GENERAL ARRANGEMENT



- LI Lawn - Turf lawn with steel edging
- G1 Resin bound permeable gravel - The Resin Mill - Cappucino  
Fall of 1:75 sloping away from garage door
- CI Clay pavers laid in stretcher bond with 2-3mm nominal joints  
filled with jointing sand and min slope of 1-2%  
Paver edging supported by sand cement - Slot drains where required  
Vande Mortel SeptimA Olive
- G2 Self binding Gravel pathway laid 750150mm of DTpI sub-base  
with steel edging - Breedons Golden Amber
- S1 Wooden Outdoor Sauna on concrete base -  
Urban Cedar 2200mm(L)x1800mm(W)x 2310mm(H)
- S2 Tool shed to match Bike and bin shed on concrete base  
Garden Trellis Company
- S3 Bicycle and Bin store on concrete base -  
Brighton Bike Sheds - Classic Bike Shed
- G3 Automated metal railing gate - To be decided
- PI Planting beds with corten steel edging - Everedge
- FI Wooden Featherboard fencing panels 1.80m H  
with trellis top - Jacksons  
Gravel boards for use with Slotted posts  
(including 2 Hedgehog friendly gravel boards)
- WI Brick wall Imperial Tumbled Reclamation Buff Handmade Brick 65mm  
1.8m across driveway with 2m capped piers to be determined by gate
- H1 Laurel Hedge - Prunus lusitanica (see Planting Plan)
- H2 Thuja occidentalis  
Hedge  
(see Planting Plan)
- BI Bench seating -  
to be decided
- B2 Council Refuse Bin  
to be relocated away from property

**Sheet Notes**

Do not scale this drawing  
All dimensions in millimetres  
All dimensions indicative only  
All dimensions must be checked on site  
& any discrepancies verified with the landscaper or garden designer  
Drawing based on survey information by others  
Drawing to be read with all other issued information  
Refer to architects' information for all architectural elements  
Refer to engineering information for all engineering elements  
All footings, foundations & structural elements to engineer's design and specification  
Any discrepancies between the drawings and site conditions to be brought to the  
attention of the garden designer for review

**2** General Arrangement - Hillingdon Court Park Pavilion  
Scale: 1:200

0 5 10 M

N

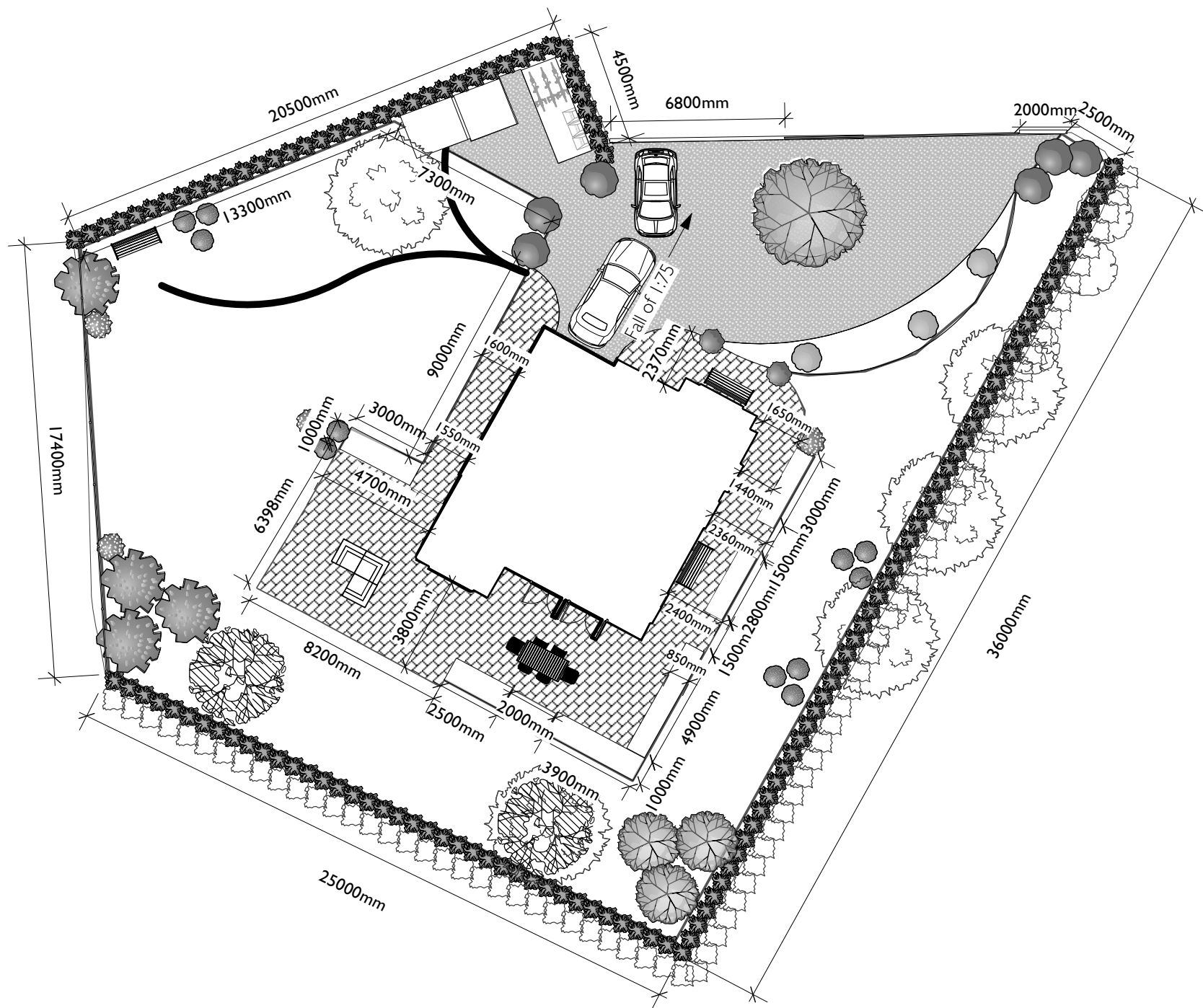
Date No. Zone Revision Notes

**LAUREN MUNTON GARDENS**

Project Title  
Hillingdon Court Park Pavilion

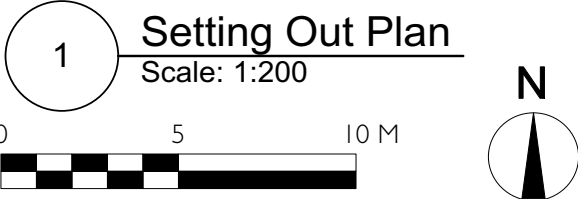
Sheet Scale 1:200 @A3	Total Sheets
Drawn By L. Munton	Reviewed By
File Name Hillingdon V3.1.vwx	
Status code S0 WIP - INITIAL STATUS	

B.3. SETTING OUT PLAN



Sheet Notes

Do not scale this drawing  
All dimensions in millimetres  
All dimensions indicative only  
All dimensions must be checked on site  
& any discrepancies verified with the landscaper or garden designer  
Drawing based on survey information by others  
Drawing to be read with all other issued information  
Refer to architects' information for all architectural elements  
Refer to engineering information for all engineering elements  
All footings, foundations & structural elements to engineer's design and specification  
Any discrepancies between the drawings and site conditions to be brought to the attention of the garden designer for review

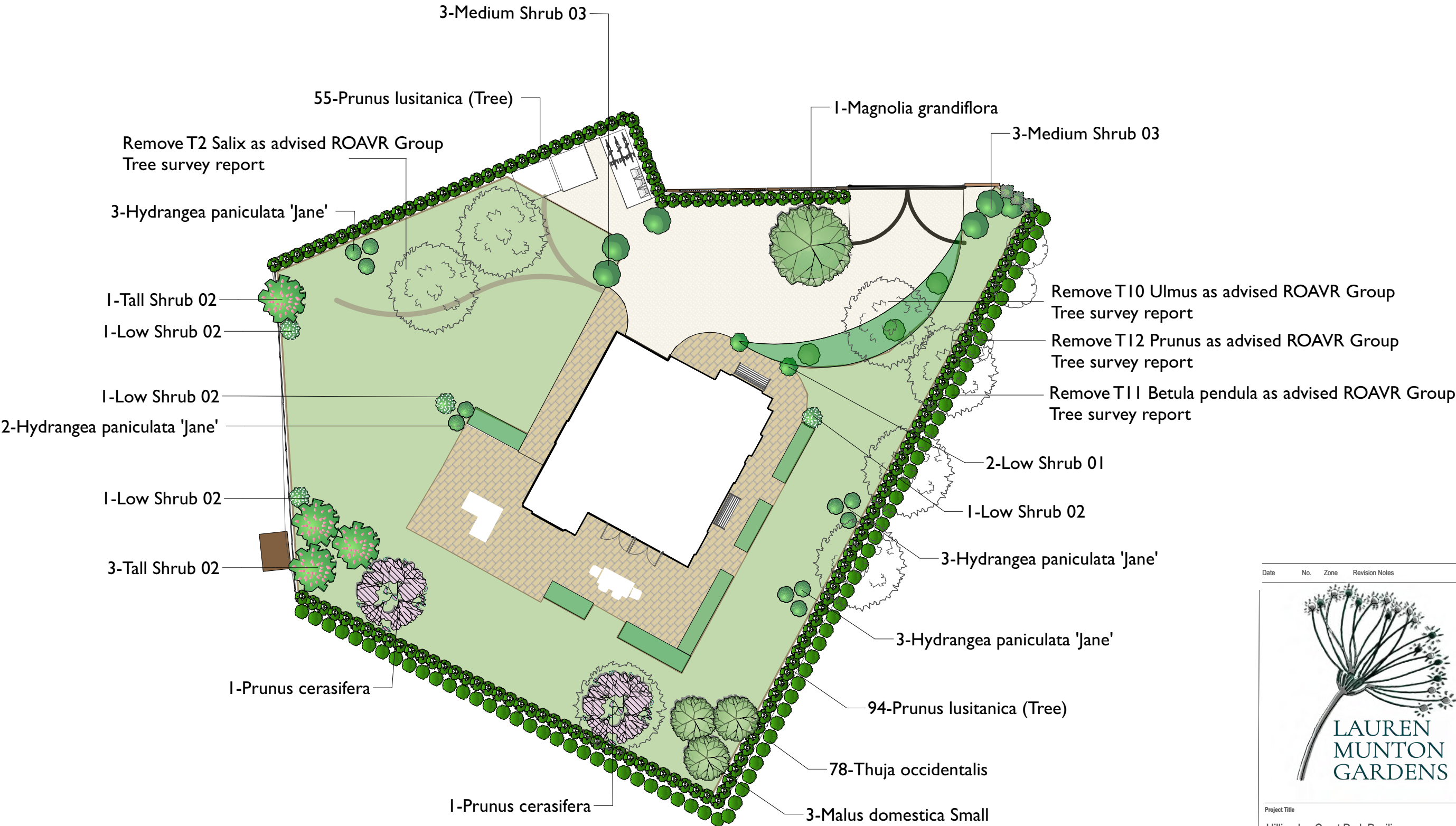


Setting Out Plan  
Scale: 1:200

Date	No.	Zone	Revision Notes
 <b>LAUREN MUNTION GARDENS</b>			
Project Title Hillingdon Court Park Pavilion			
Sheet Scale 1:200 @A3		Total Sheets	
Drawn By		Reviewed By	
File Name Hillingdon V2.vwx			
Status code Code - Description S0 WIP - INITIAL STATUS			



# C.I. SOFT LANDSCAPING - Planting Plan - Trees and Shrubs



Tall shrubs to include *Choisya ternata*, *Olearia macrodonata*  
Medium Shrubs to include *Daphne bholua*, *Osmanthus x burkwoodii*, *Viburnum davidii*  
Low shrubs to include *Pittisporum tenuifolium* 'Golf Ball' and 'Tom Thumb', *Euonymus fortunei*, *Hebe*  
Hedge 04: Laurel hedge - *Prunus Lusitana Angustifolia* - planted at 3 shrubs per 2 meters  
British Native whips interplanted in existing hedge to fill gaps - *Ilex*, *Corylus*, *Carpinus*.  
*Malus domestica*, *Prunus cerasifera* and *Magnolia grandiflora* underplanted with Spring bulbs

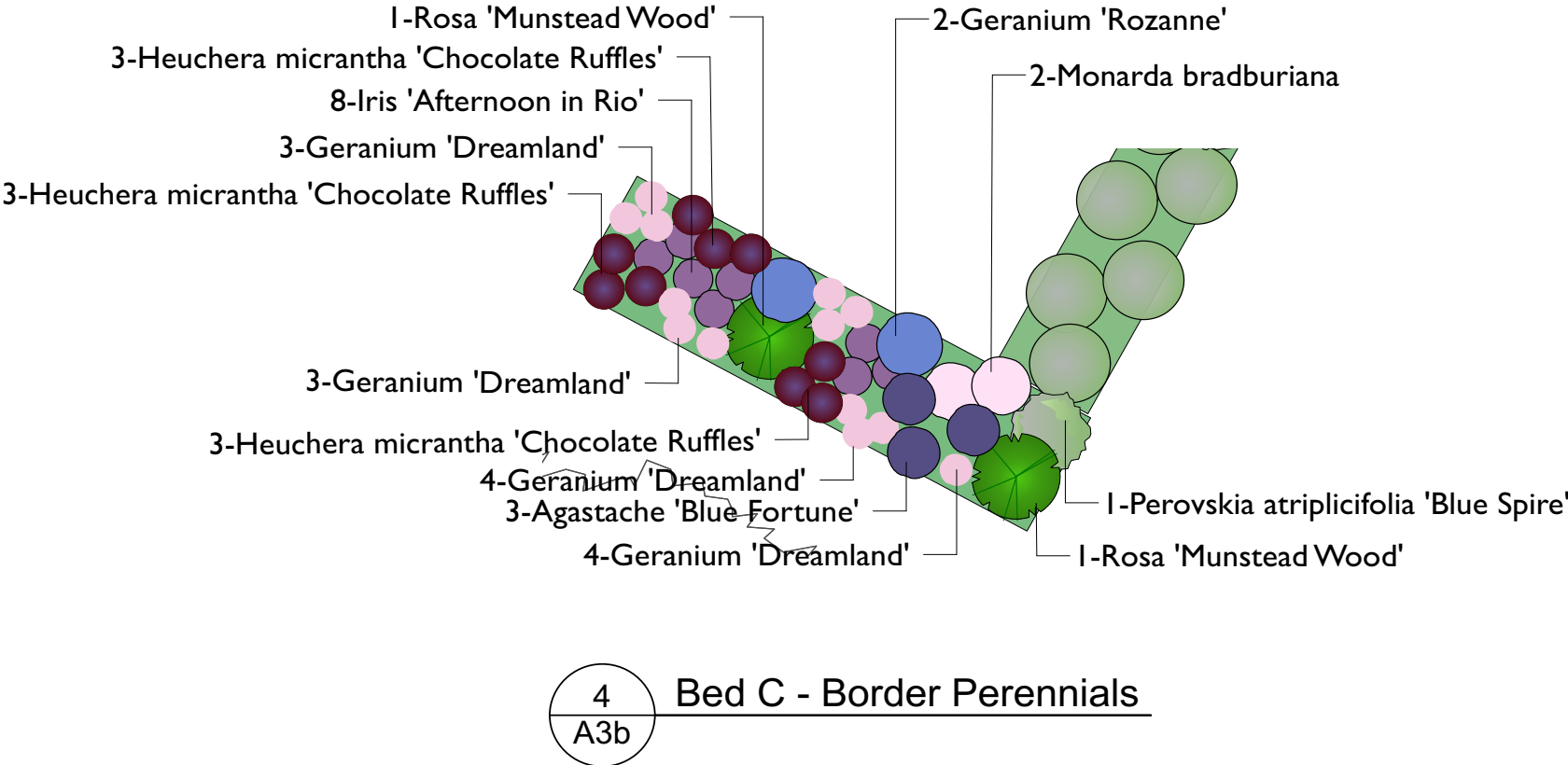
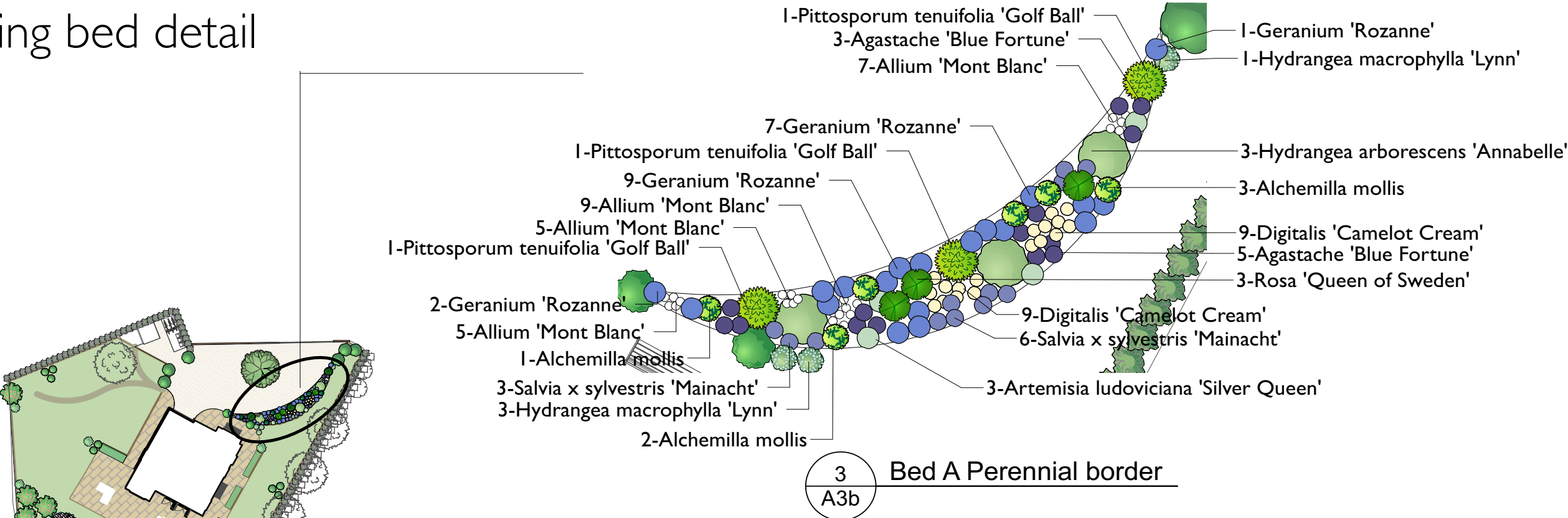
1  
A3a

Planting Plan Trees and Shrubs

Date	No.	Zone	Revision Notes
			
Project Title Hillingdon Court Park Pavilion			
Sheet Scale 1:200 @A3		Total Sheets	
Drawn By L. Muntun		Reviewed By	
File Name Hillingdon V3.1.vwx			
Status code S0 WIP - INITIAL STATUS			

# C.I. SOFT LANDSCAPING - Planting plan

## Planting bed detail



Date	No.	Zone	Revision Notes
Project Title Hillingdon Court Park Pavilion			
Sheet Scale 1:200 @A3		Total Sheets	
Drawn By L. Muntun		Reviewed By	
File Name Hillingdon V2.vwx			
Status code S0 WIP - INITIAL STATUS			

# C.I. SOFT LANDSCAPING - Schedule of Plants

Hillingdon Court Pavilion Plant schedule

Category	Latin Name	Scheduled Size	Quantity
Sample beds			
Bed A			
Bulbs	Allium 'Mont Blanc'	Bulb	26
Perennials	Agastache 'Blue Fortune'	p9	7
Perennials	Alchemilla mollis	p9	6
Perennials	Artemisia ludoviciana 'Silver Queen'	2l	4
Perennials	Digitalis 'Camelot Cream'	p9	18
Perennials	Geranium 'Rozanne'	p9	18
Perennials	Salvia x sylvestris 'Mainacht'	2L	12
Roses	Rosa 'Queen of Sweden'	6L	3
Shrubs	Pittosporum tenuifolia 'Golf Ball'	2L	3
Shrubs	Hydrangea arborescens 'Annabelle'	12L	3
shrub	Hydrangea macrophylla 'Lynn' USPP 20019	12L	4
Bed B			
Perennials	Lavandula angustifolia 'Hidcote'	p9	36
Bed C			
Perennials	Agastache 'Blue Fortune'	p9	3
Perennials	Heuchera micrantha 'Chocolate Ruffles' P.P.# 8965	p9	9
Perennials	Iris 'Afternoon in Rio'	p9	8
Perennials	Geranium 'Dreamland'	p9	13
Perennials	Geranium 'Rozanne'	p9	2
Perennials	Monarda bradburiana	p9	2
Roses	Rosa 'Munstead Wood'	6L	2
Shrubs	Perovskia atriplicifolia 'Blue Spire'	2L	3

Category	Latin Name	Scheduled Size	Quantity
Trees and Shrubs			
Trees	Magnolia grandiflora	30L	1
Trees	Malus x domestica 'Granny Smith'	9L	3
Trees	Prunus cerasifera	12L	1
shrub	Hydrangea paniculata 'Jane'	12L	11
Shrubs	Low Shrubs: Pittisporum tenuifolium ' Golf Ball' , 'Tom Thumb', Euonymus fortunei, Hebe	2L	6
Shrubs	Medium Shrub: Daphne bholua, Osmanthus x burkwoodii, Viburnum davidii	2L	6
Shrubs	Tall Shrubs: Choisya ternata, Olearia macrodonata	10L	4
Shrub-Hedge	Thuja Occidentalis	180cm rootball	78
Shrub-Hedge	Hedge - Prunus Lusitana Angustifolia	60/80cm rootball	149

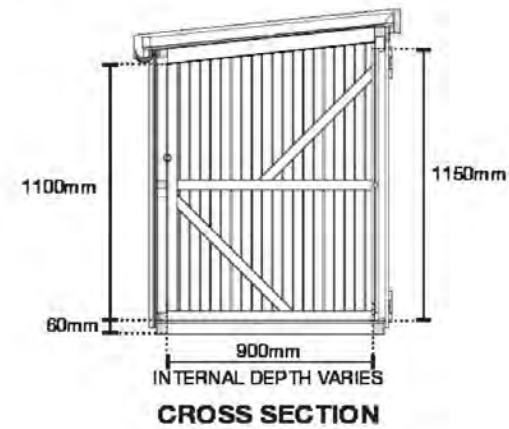




## C.2.a &b. HARD LANDSCAPING - Refuse storage and Cycle storage

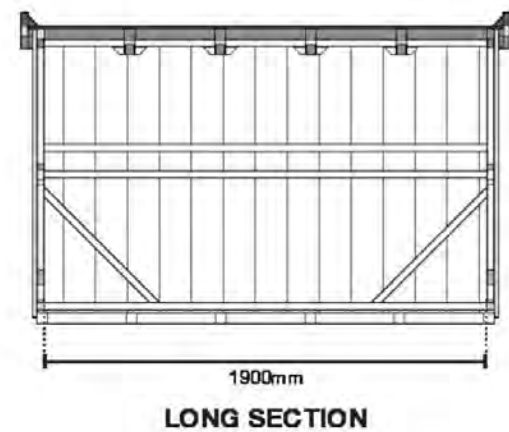
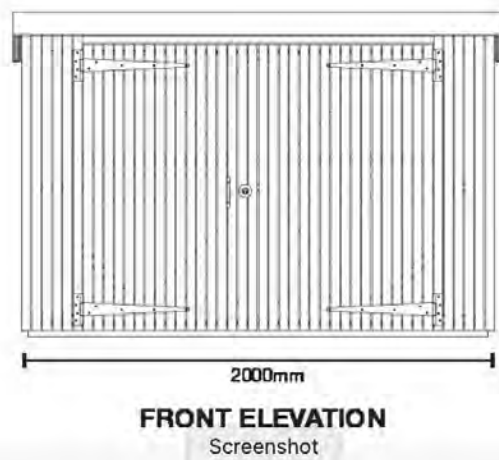


### Key Dimensions - 3 bike shed model



### Measurements Bike storage

2000mm W x 1000mm D x 1350mm H



### Measurements with Bike and Bin storage combined

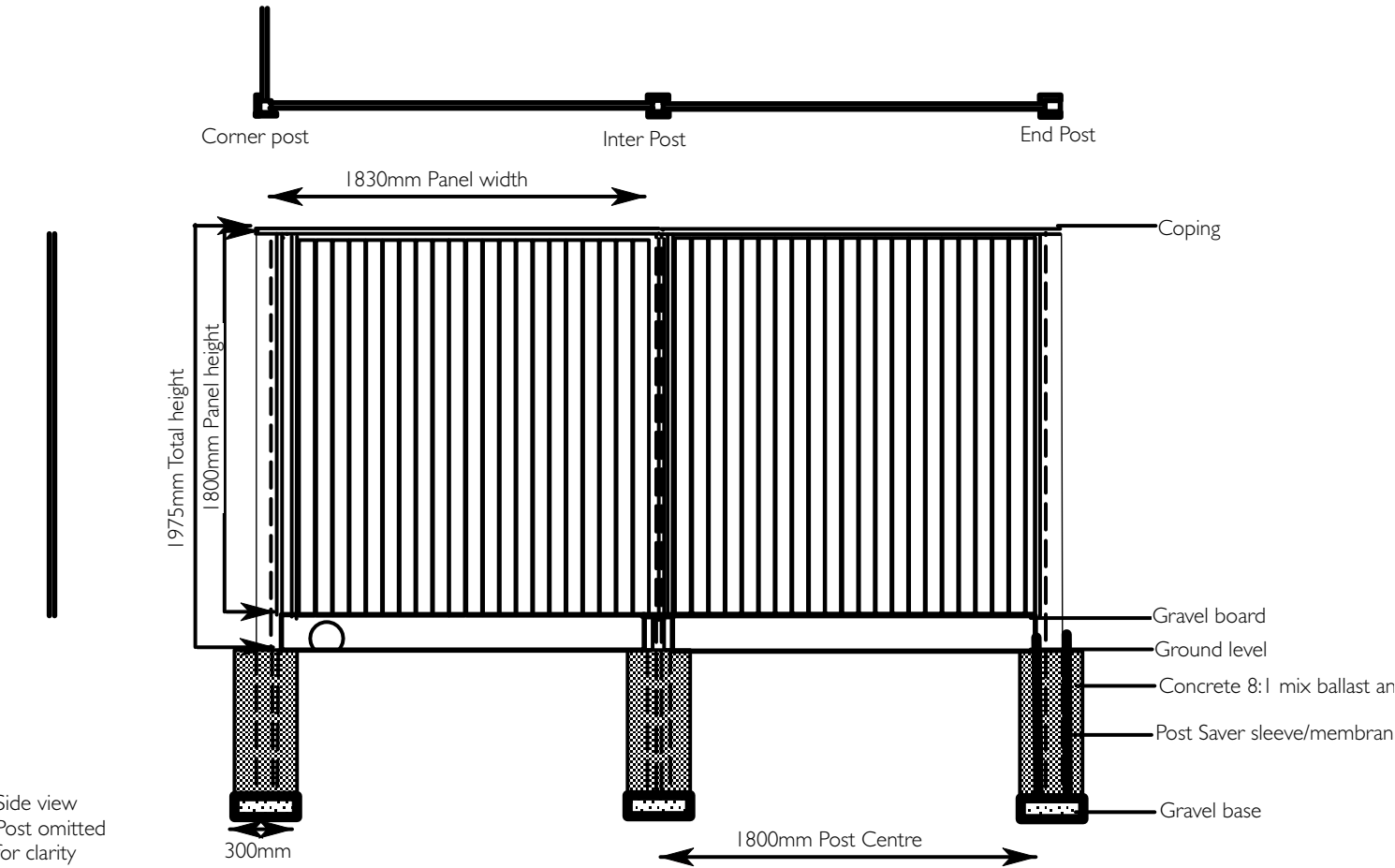
4000mm W x 1000mm D x 1350mm H



C.2.c. HARD LANDSCAPING - FENCING



Plan view (without coping strip for clarity)



1

A3

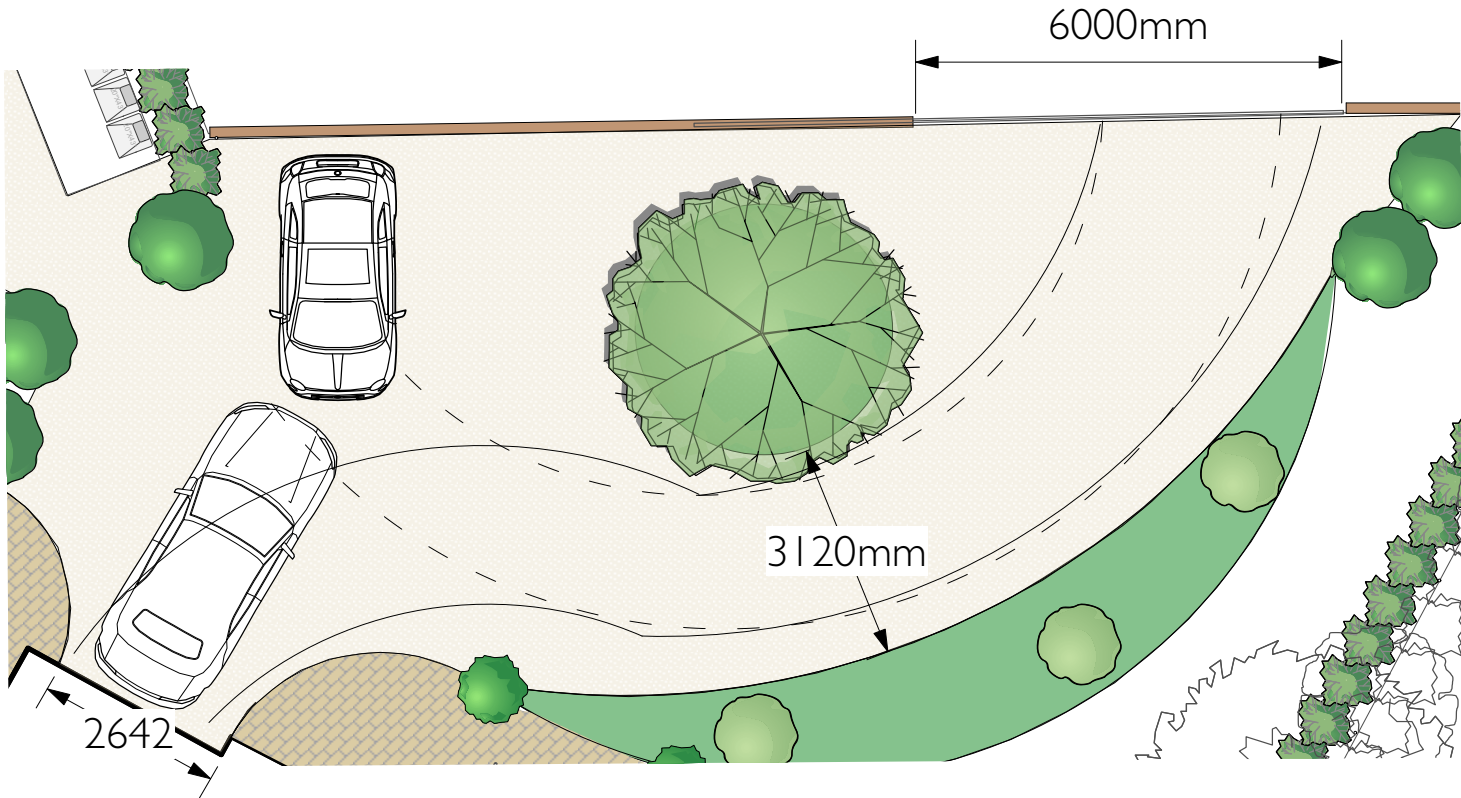
Jackson's Fencing

Scale: 1:50

Sheet Notes

Do not scale this drawing  
All dimensions in millimetres  
All dimensions indicative only  
All dimensions must be checked on site  
& any discrepancies verified with the landscaper or garden designer  
Drawing based on survey information by others  
Drawing to be read with all other issued information  
Refer to architects' information for all architectural elements  
Refer to engineering information for all engineering elements  
All footings, foundations & structural elements to engineer's design and specification  
Any discrepancies between the drawings and site conditions to be brought to the attention of the garden designer for review

C.2.d. HARD LANDSCAPING - Car Parking layout



1 Car parking layout  
Scale: 1:100

Date	No.	Zone	Revision Notes
 LAUREN MUNTION GARDENS			
Project Title Hillingdon Court Park Pavilion			
Sheet Scale 1:100 @A3		Total Sheets	
Drawn By		Reviewed By	
File Name Hillingdon V2.vwx			
Status code S0 WIP - INITIAL STATUS			



## 2.e. HARD LANDSCAPING - Hard Surfacing Materials



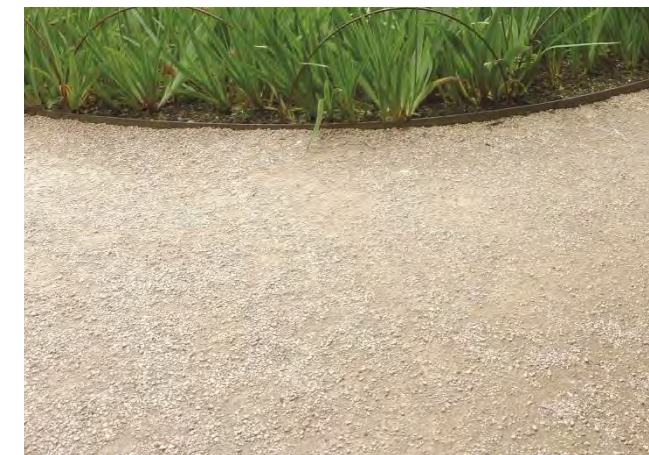
Clay pavers laid in stretcher bond with 2-3mm nominal joints filled with jointing sand and min slope of 1-2% Vande Moortel SeptimA Olive  
Paver edging supported by sand cement - Slot drains where required



Bricks for driveway wall and piers  
Imperial Tumbled Reclamation Buff Handmade Brick 65mm or similar



Driveway - Resin Bound gravel - The Resin Mill - Colour Cappuccino  
Fall of 1:75 sloping away from garage door



Self binding Gravel pathway laid 750|50mm of DTpI sub-base with steel edging - Breedons Golden Amber



2.f. HARD LANDSCAPING - External lighting



1 Hunza Pure LED recessed path lights  
1-4 Quarters Copper - paths and  
parking lighting

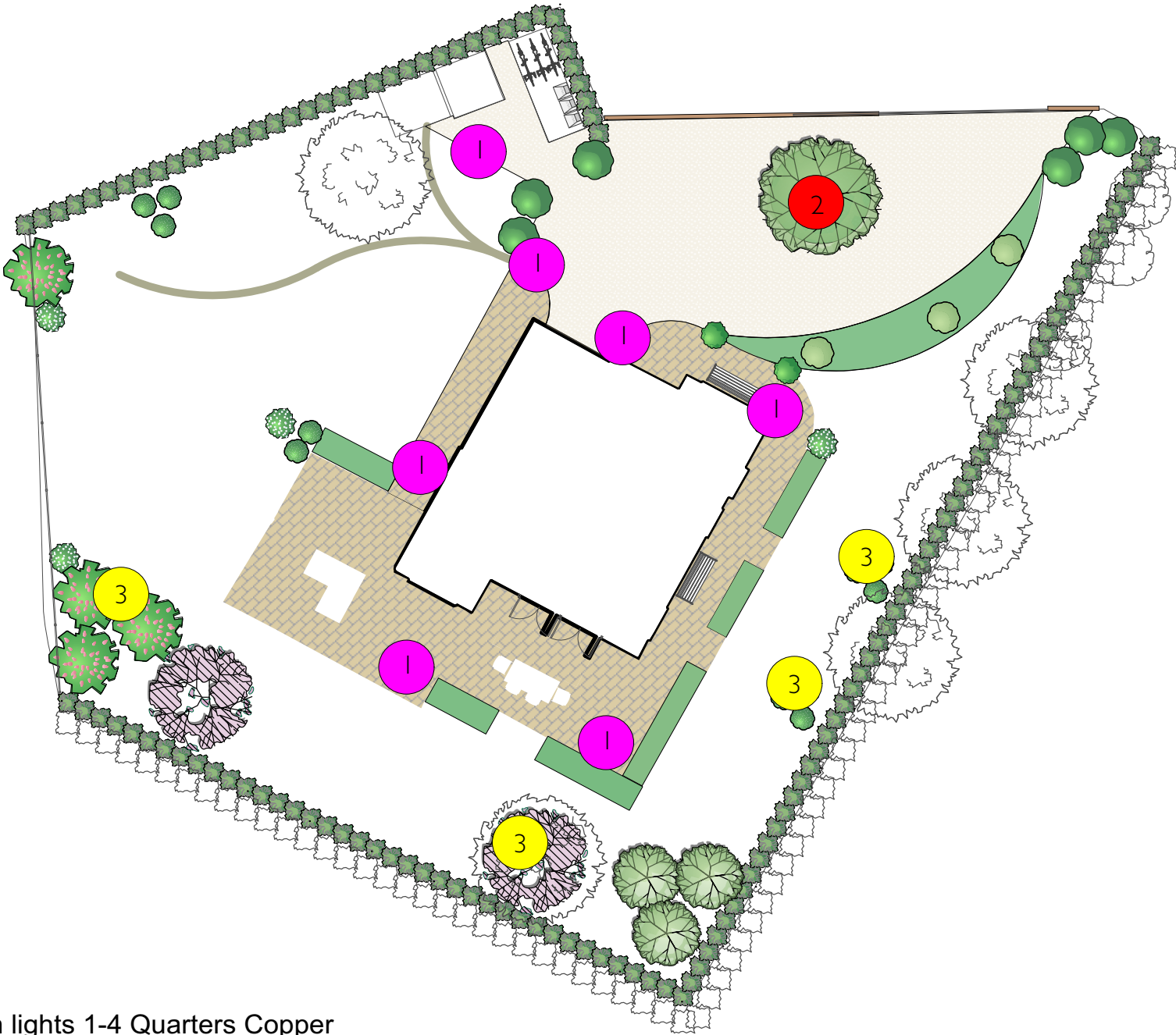


2 Hunza ST50 Pure LED Inground  
Uplighters - bronze - lighting large  
magnolia tree

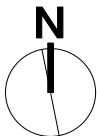


3 LuxR M1 LED Spike Spotlights - Eco  
black (IP68) - lighting shrubs

- 1 Hunza Pure LED recessed path lights 1-4 Quarters Copper  
path and parking lighting
- 2 Hunza ST50 Pure LED Inground Uplighters - bronze -  
lighting large trees
- 3 LuxR M1 LED Spike Spotlights - Eco black (IP68) -  
lighting shrubs



1 **Lighting Plan**  
Scale: 1:200



Date No. Zone Revision Notes



Project Title  
Hillingdon Court Park Pavilion

Sheet Scale  
1:200 @A3

Total Sheets

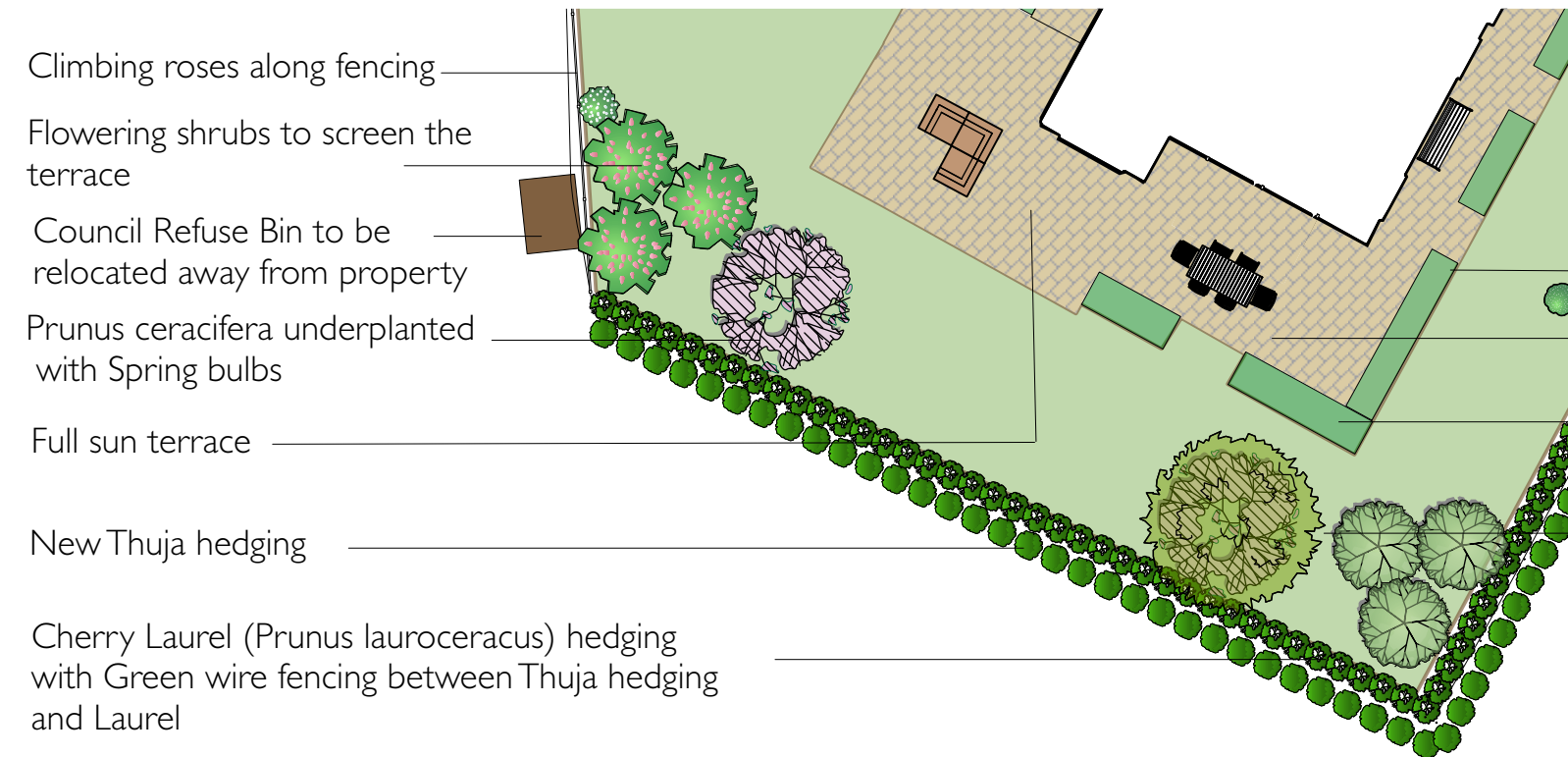
Drawn By

Reviewed By

File Name  
Hillingdon V2.vwx

Status code  
S0 WIP - INITIAL STATUS

### 3. COUNCIL BIN RELOCATION



Council Bin to be relocated from edge of property to other side of tarmac path





# REFERENCES AND SUPPLIERS



## Fencing

Jacksons Flat Top Weatherboard Fence Panels

1800mm (H) x 17000mm (17m) Length All panels are 1.83 wide

Gravel boards for use with Slotted Posts 1.83m x 140 x 28mm (including 2 Hedgehog friendly gravel boards

<https://www.jacksons-fencing.co.uk/fencing/traditional-fencing/featherboard>

## Bike and Bin Store

Brighton Bike Sheds

Classic bike shed for 3 bikes and 3 wheelie bins Scottish Larch

<https://www.brightonbikesheds.co.uk/product/classic-bike-shed/?cnf=vBXZ43>

## Outdoor Sauna

Urban Cedar Glass Rectangle Outdoor Sauna 7ft x 6ft

<https://www.urbancedarhottubs.co.uk/collections/urban-cedar-outdoor-sauna/products/urban-cedar-glass-rectangle-outdoor-sauna-7ftx6ft-best-seller>

## Garden Tool Shed

The Garden Trellis Company

<https://www.gardentrellis.co.uk/product/prestige-range/contemporary-shed>

## Resin Bound gravel

The Resin Mill - Colour Cappuccino

<https://theresinmill.co.uk/products/aggregates/resin-bound-gravel/cappuccino/>

## Clay Pavers

Vande Moortel SeptimA Olive

<https://www.vandemoortel-bricksandpavers.com/en/product/clay-pavers/septima/olive/>

## Self binding Gravel

<https://www.breedon-special-aggregates.co.uk/breedon-golden-amber-gravel/>

## Garden Lighting

LandscapePlus

<https://landscapeplus.com>

## Metal Electric Gates

<https://www.theelectricgateco.co.uk/metal-electric-gates.html>



Thank you

Contact details  
Lauren Muntongardens  
28 Spencer Rise  
London NW5 1AP

Email: [hello@laurenmuntongardens.co.uk](mailto:hello@laurenmuntongardens.co.uk)  
Phone: 07776208214