

## 6.5 HS2 Landscape Proposals

The adjacent illustrative plan shows the proposed site layout and landscape design within the context of the proposed final landscape proposals for the HS2 site to the south and west. The extensive areas of woodland planting that are proposed will contain the south and west of the site, restricting views in from these directions. With views from the east and north already occluded by existing woodland, the site will be visually and physically contained by woodland on almost all sides.



Figure 21: Illustrative layout in proposed HS2 context



## 6.6 Open Space Comparison

The diagrams on this page illustrate the existing and proposed open space and landscape. Existing trees and woodland have been retained where possible. These have also been supplemented with additional tree planting throughout the site. The existing amenity grass has low ecological value and has largely been replaced with extensive areas of species rich wildflower and shrub planting. SuDS features have been designed to maximise the biodiversity across the proposed site and an additional wildlife pond will contribute to habitat creation while helping to manage overland flow.



Figure 22: Existing Landscape Areas



Figure 23: Proposed Landscape Areas



6.7 Design details

The western portion of the site is where the most formal landscape areas are located. The building located in the west of the site includes office space and therefore requires breakout and amenity landscape for those users. Seating opportunities are provided adjacent to the SuDS features and within the areas of amenity lawn. Hedgerows are used to contain the parking spaces and rows of parking are broken up with tree and shrub planting.

The SuDS feature is planted with wildflower and marginal planting that promotes biodiversity.



Figure 24: Formal landscape to west portion of site



## 6.8 Proposed Topography

The adjacent diagram illustrates the proposed topography. The approach to topography has been to work with the existing levels as much as possible, stepping down from west to east to create the platforms required for the yard spaces and buildings. Existing levels have not been changed within the root protection areas of retained trees. The illustrative site sections on the following pages show the extent of level change and how the buildings sit within the proposed landscape.



Figure 25: Proposed topography

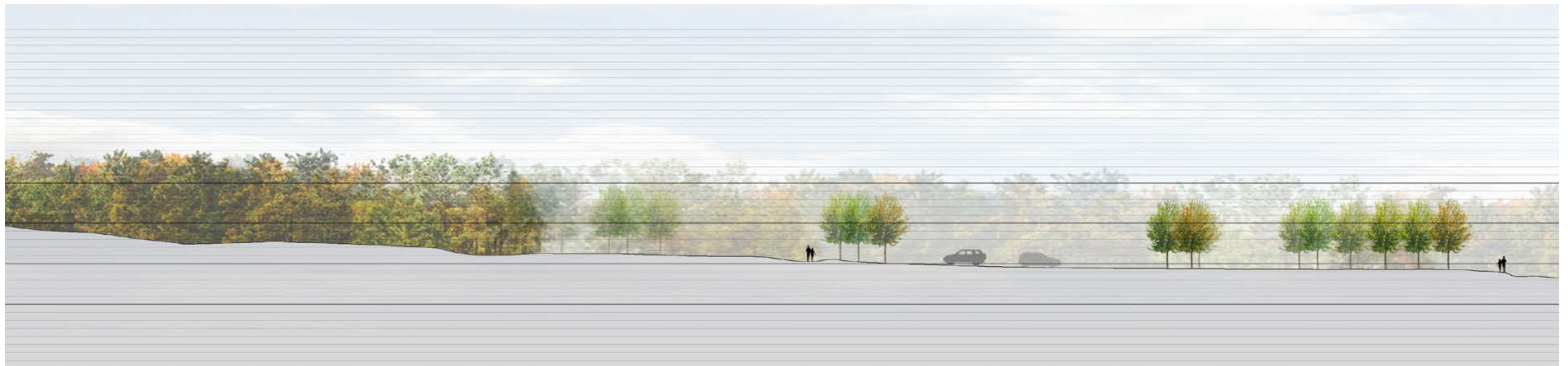


Figure 26: Section A-A

6.9 Site Sections



Figure 27: Section B-B

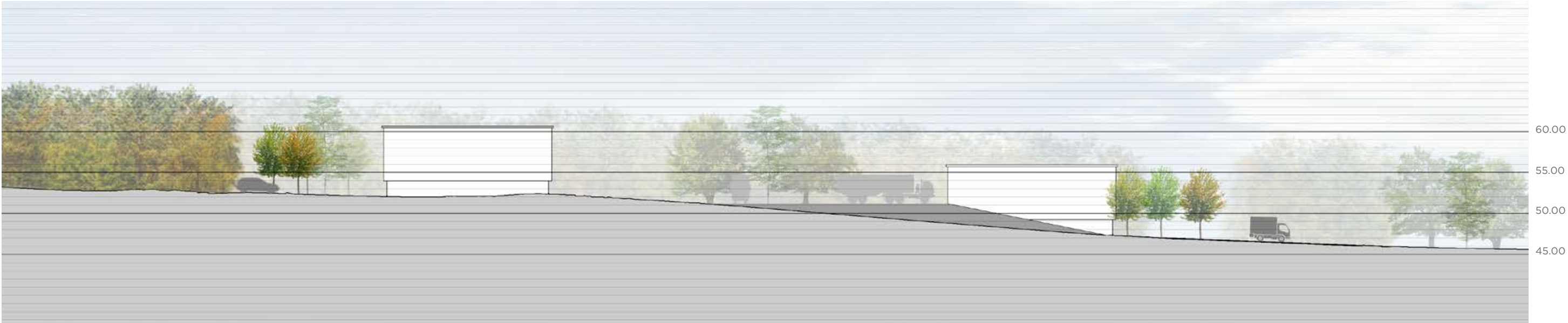


Figure 28: Section E-E

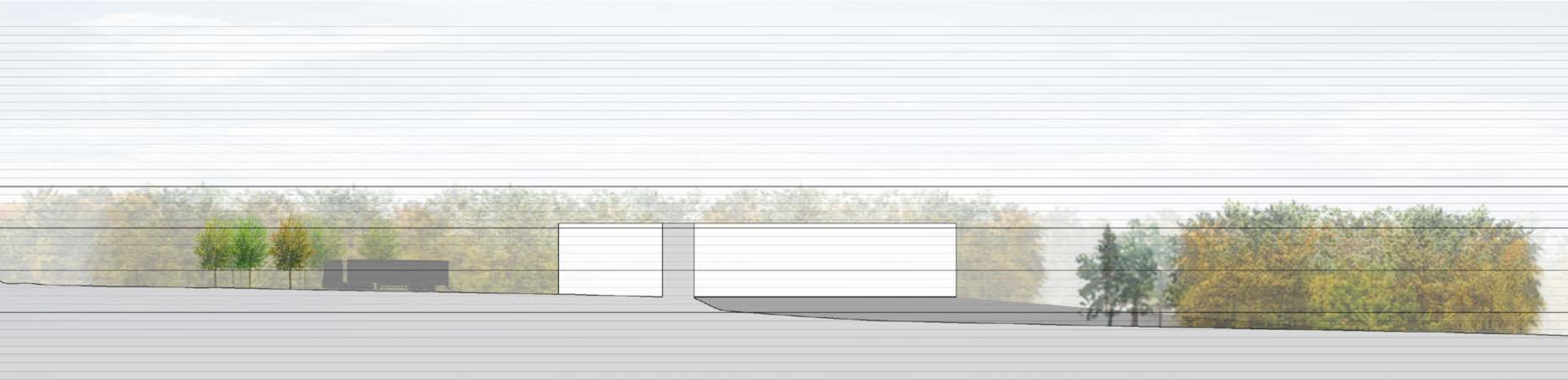




Figure 29: Section C-C



Figure 30: Section Key Plan



65.00  
60.00  
55.00  
50.00  
45.00



6.10 Soft landscape:  
Trees and Hedges

The function of this tree planting is to soften the impact of the proposed development, create an appropriate edge to the development and give separation from the HS2 development. It also provides a connected green structure, linking with the existing planting in the surrounding landscape context.

Parkland and Street Trees

Planting a variety of different types such as pear, rowan, hazlenut and birch will provide seasonal interest, offering longer periods for a combination of food, water and shelter opportunities for birds, small malmms, and invertebrates.

Boundary Woodland and Trees

Trees and foraging habitat lost from the existing site will be replaced and enhanced with the addition of proposed landscape features and woodland. New woodland planting is proposed to wrap around the site boundary to the south, west and north, linking in with the existing woodland.



Alnus glutinosa



Prunus avium



Betula pendula



Sorbus aucuparia



Carpinus betula



Tilia cordata





Quercus robur



Mixed woodland



Hedge



**Figure 31: Trees plan**  
Former MSD Facility, Breakspear Road South, Ickenham | Detailed Planning Application | Landscape Report



6.11 Soft landscape: Grasses

The soft landscape proposals are to create a wildlife corridor, using native species to create a band of wood and scrub planting with a grassland edge with the aim of promoting pollination and increasing biodiversity

Amenity Grass

Small areas of grass with picnic tables have been proposed allowing for use by office workers and visitors. Smaller areas of bulbs have been proposed around existing trees and the existing watercourse, offering colour and interest in late winter, early spring.

Wildflower Grass Mix

Where amenity grassland is not required we have allowed for a meadow cut and a species-rich meadow mix. The open meadow grassland will offer aesthetic and practical benefits. Using suitable wildflower mixes, we have designed areas of longer grassland adjacent to woodland edges to promote habitat creation as well as



Figure 32: Grass and Meadow Planting

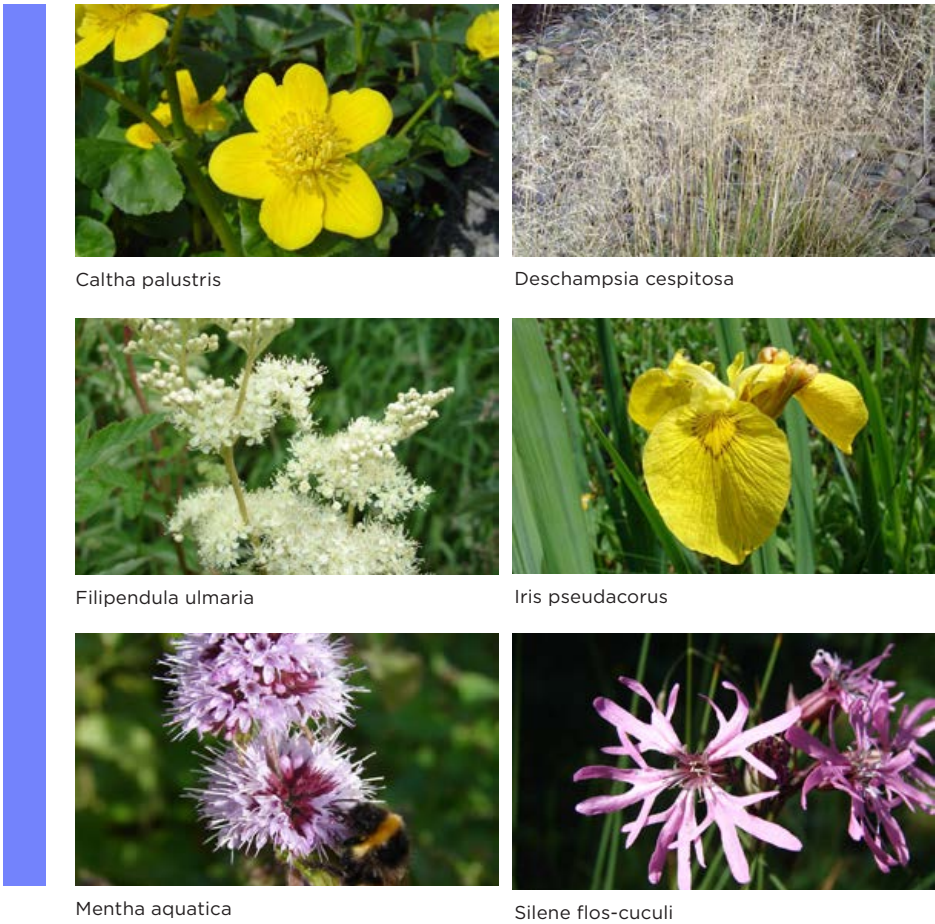


6.12 Soft landscape: SUDs

Wetland Meadow Seed Mix



Marginal Aquatics Mix



Former MSD Facility, Breakspear Road South, Ickenham | Detailed Planning Application | Landscape Report

Figure 33: SUDs Planting



6.13 Soft landscape:  
Shrubs and Groundcover

Shrub mixes have been selected that include predominantly native species with a variety of fruits and berries to provide food and shelter for foraging small mammals, birds, and invertebrates. A species-rich woodland mix for the woodland areas will provide a structured woodland with canopy, shrub and ground layers.

Some ornamental species are proposed adjacent to the office building and proposed car park where a more formal setting is preferred. These will provide seasonal interest.

The proposed locations for species-rich shrub mixes form a green network, improving the wuality and value of the local landscape and creating opportunities for connected habitats.

Shrub Mix 01



Hydrangea macrophylla 'Lanarth White'



Ligustrum vulgare



Pulmonaria officinalis 'Sissinghurst White'



Sarcococca confusa



Viburnum tinus



Vinca minor

Shrub Mix 02



Astilbe chinensis var. Pumilla



Astantia major 'Claret'



Dryopteris affinis



Eupatorium purpureum



Lavandula angustifolia



Rosmarinus officinalis




Origanum 'Herren Hausen'




Stipa tenuissima 'Ponytails'




Understorey Mix




Buxus sempervirens




Colchicum autumnale



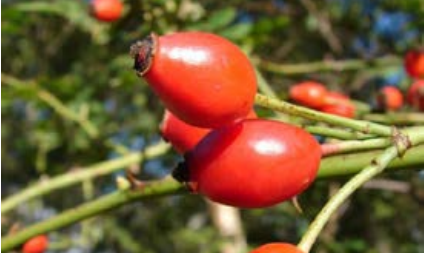
Hyacinthoides non-scripta




Ligustrum vulgare




Narcissus pseudonarcissus




Rosa canina



Ruscus aculeatus



Salix lanata




Viburnum opulus



Figure 34: Shrubs and Groundcover Plan  
Former MSD Facility, Breakspear Road South, Ickenham | Detailed Planning Application | Landscape Report




6.14 Hard Landscape: Surfacing




**P1: Permeable Paving**

Tobermore Hydropave Tegula




**P2: Footways**

Asphalt paths




**P3: Footpaths**

Self-binding gravel




**P4: Roadway**

STONE MASTIC ASPHALT




**P5: Gravel Trim to Building Edge**

Gravel



**P6: Parking**

BITUMINOUS CARRIAGEWAY CONSTRUCTION



**Service Yard**

To engineers specification



Figure 35: Surface finishes plan



## 6.15 Hard Landscape: Furniture



Picnic Benches



Benches



Cycle stands



Bins



**Figure 36: Street furniture plan**  
Former MSD Facility, Breakspear Road South, Ickenham | Detailed Planning Application | Landscape Report



6.16 Hard Landscape: Boundaries

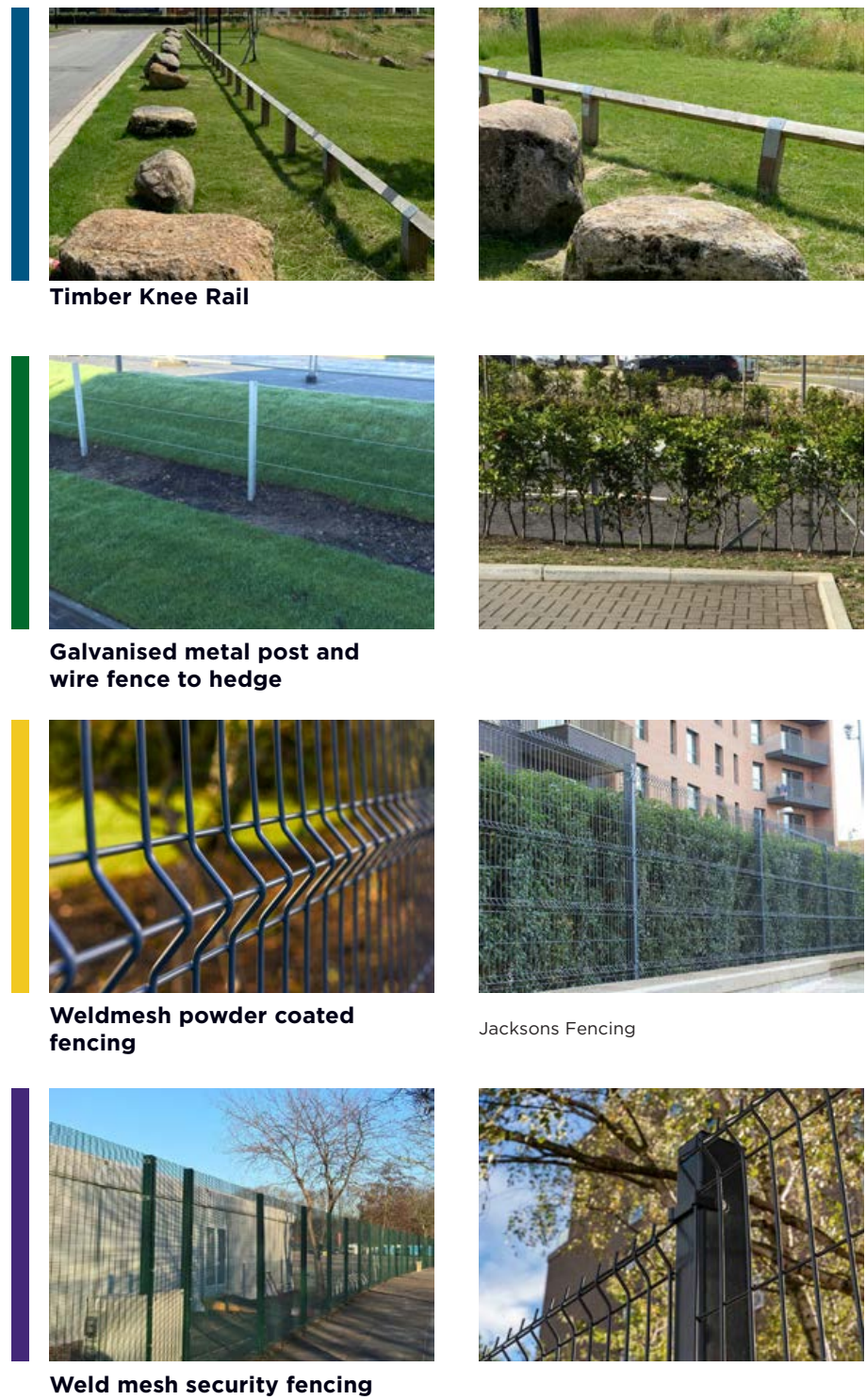


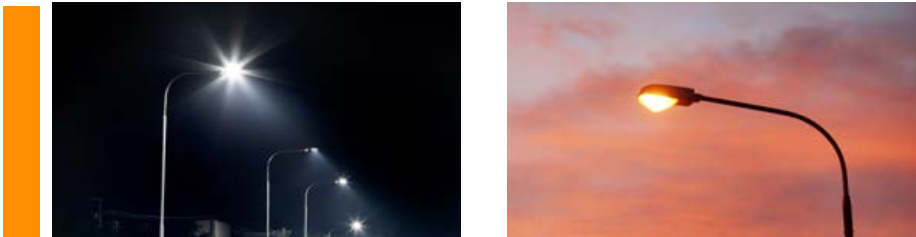
Figure 37: Boundary treatment plan



6.17 Hard Landscape: Lighting

An indicative lighting approach is illustrated on the adjacent diagram. The overall aim is to light the main access road and associated footpaths through the use of columns, light the car park with smaller columns, the remote footpath link is lit with bollard lighting and the service yards are lit with either wall mounted lighting on the proposed buildings or pole mounted lights.

Detailed lighting proposals will be developed post planning submission. These will take into account any recommendations from the project ecologist in relation to the specification of this lighting and mitigating the impact on the existing ecology.



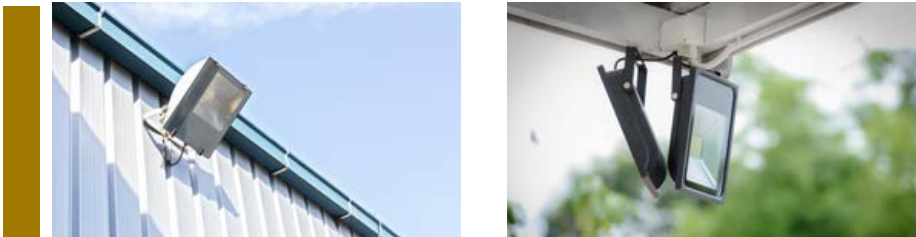
Street lighting columns Credit to: yiorgosgr Credit to: Milan Noga reco



Lighting columns to Car Park Credit to: Milan Noga reco



Bollard lighting Credit to: Esch Credit to: Rattanachat



Wall mounted lights/security lights Credit to: aerogondo Credit to: Chayanin Wongpracha

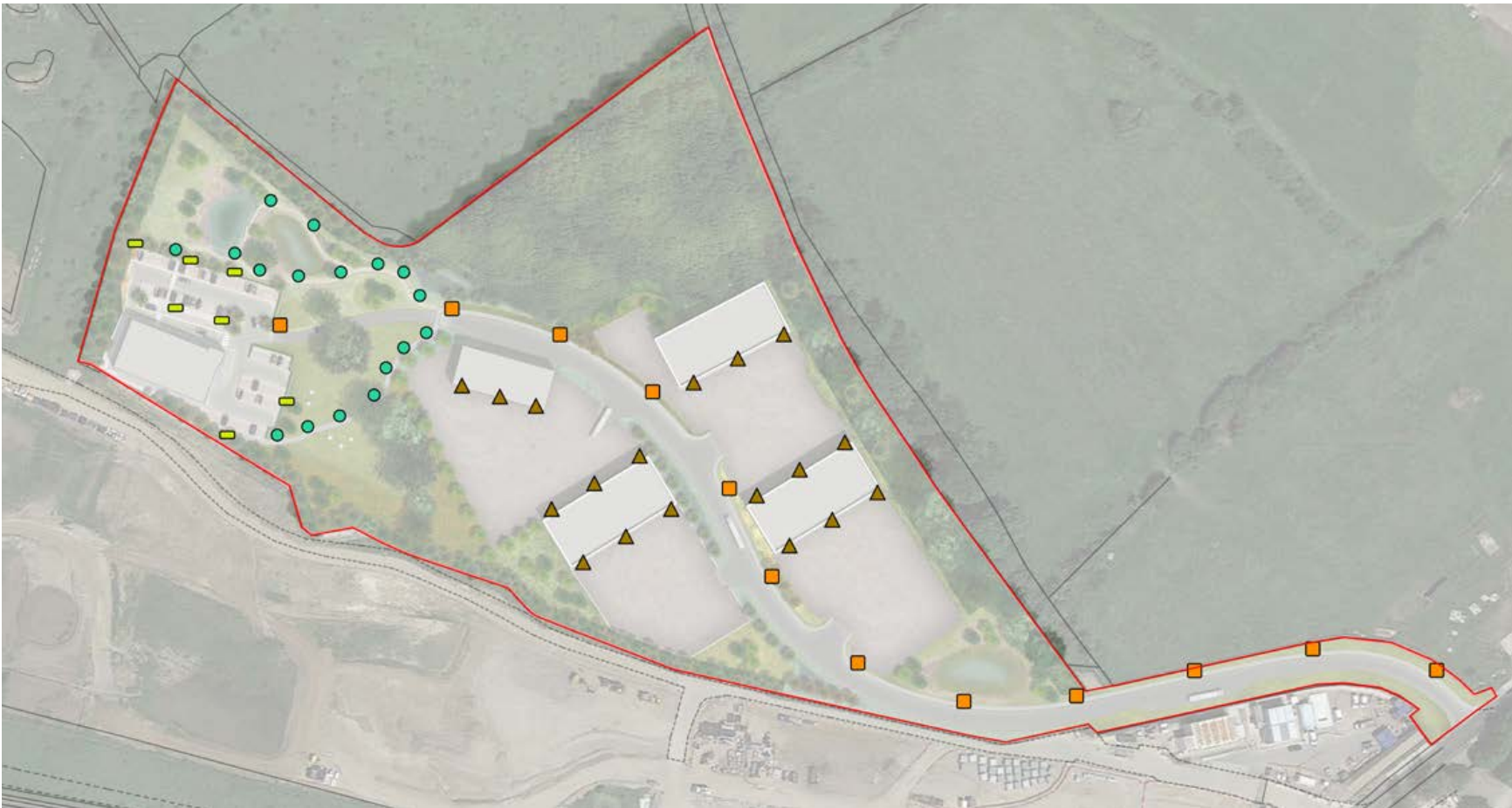


Figure 38: Indicative lighting approach plans  
Former MSD Facility, Breakspear Road South, Ickenham | Detailed Planning Application | Landscape Report



**optimised environments ltd.**

**Edinburgh**

Quartermile Two | 2 Lister Square | Edinburgh | EH3 9GL  
t 0131 221 5920 | w [optimisedenvironments.com](https://www.optimisedenvironments.com)

**London**

107 - 111 Fleet Street | London | EC4A 2AB  
t 0203 984 4022

**Manchester**

86 Princess Street | Manchester | M1 6NG  
t 0161 696 7550

Optimised Environments Ltd. Registered in Scotland SC359690.  
Registered address: Quartermile Two | 2 Lister Square | Edinburgh | EH3 9GL