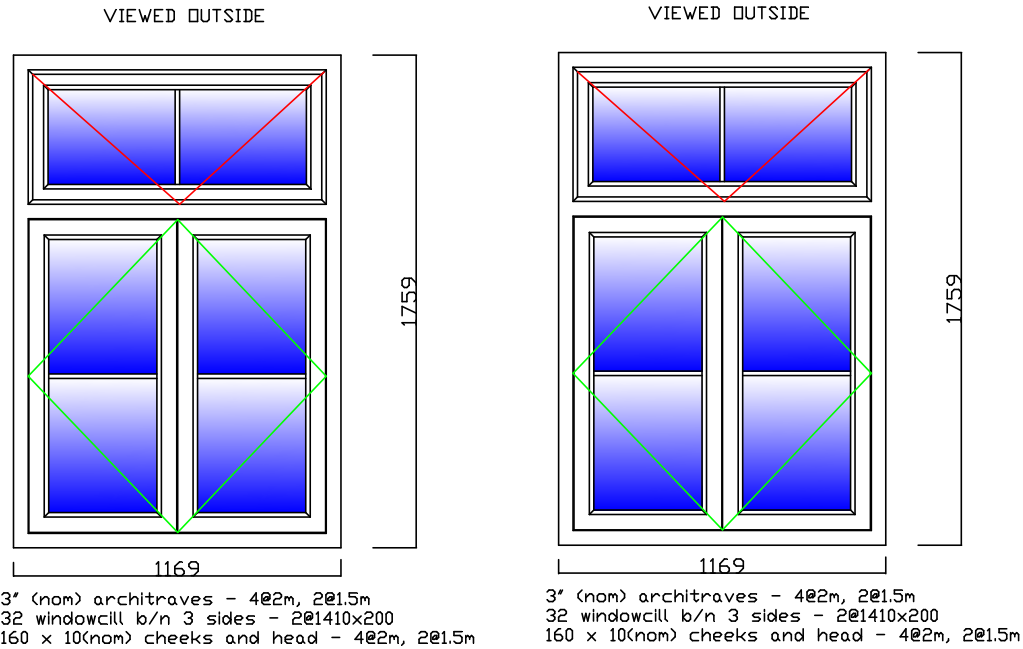


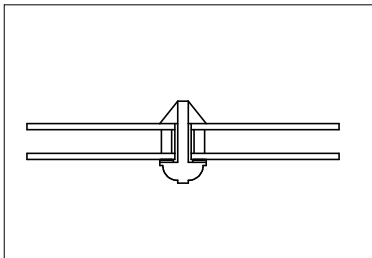
Vertical bead on top pane and horizontal beads on bottom
two panes are plant on to match width of beading on
existing windows

See cross section of beadings below



Flush Casement IPA Accoya Windows
Mortise and tenon jointed

Cross section of structural beading
Putty bead chamfer outside
Ovolo inside



Cross section of Plant on beading
Putty bead chamfer outside
Ovolo inside

