

LOCATION PLAN
SCALE 1:1250

| | UNIT 1 | UNIT 2 | UNIT 3 | TOTAL |
|--------------------------|--------------------|--------------------|--------------------|---------------------|
| GROUND FLOOR | 245 m ² | 252 m ² | 275 m ² | 772 m ² |
| FIRST FLOOR MEZANINNE | 205 m ² | 226 m ² | 244 m ² | 675 m ² |
| GRAND TOTAL | 450 m ² | 478 m ² | 519 m ² | 1447 m ² |

PARKING: MINIMUM OF 17 PARKING SPACES
PROPOSED 17 PARKING SPACES
28 CYCLE PARKING SPACES
PLANNING POLICY :
'2 spaces plus 1 space per 100 sq.m for all floorspace in excess of 235 sq.m'
'1 space per 50 sq. m. for cycle parking'

EXISTING BUILDING
TOTAL AREA 126 m²

| | | | |
|-----|----------|-----------------------------------|-------|
| Rev | Date | Description | Init. |
| G | 07.02.24 | AMENDED TO SUIT TRANSPORT | KP |
| F | 01.02.24 | AMENDED TO SUIT TRANSPORT | KP |
| E | 25.01.24 | AMENDED TO PLANNING | KP |
| D | 18.01.24 | AMENDED TO PLANNING | KP |
| C | 06.12.23 | AMENDED TO PLANNING | KP |
| B | 16.06.22 | AMENDED TO SUIT PLANNING COMMENTS | KP |
| A | 20.05.22 | AMENDED TO SUIT PLANNING COMMENTS | KP |

Client

MR BALBIR SINGH

Project Title
PROPOSED REDEVELOPMENT OF THE SITE

GETHCELN HOUSE, DAWLEY ROAD, UB3 1EH

Drawing Title

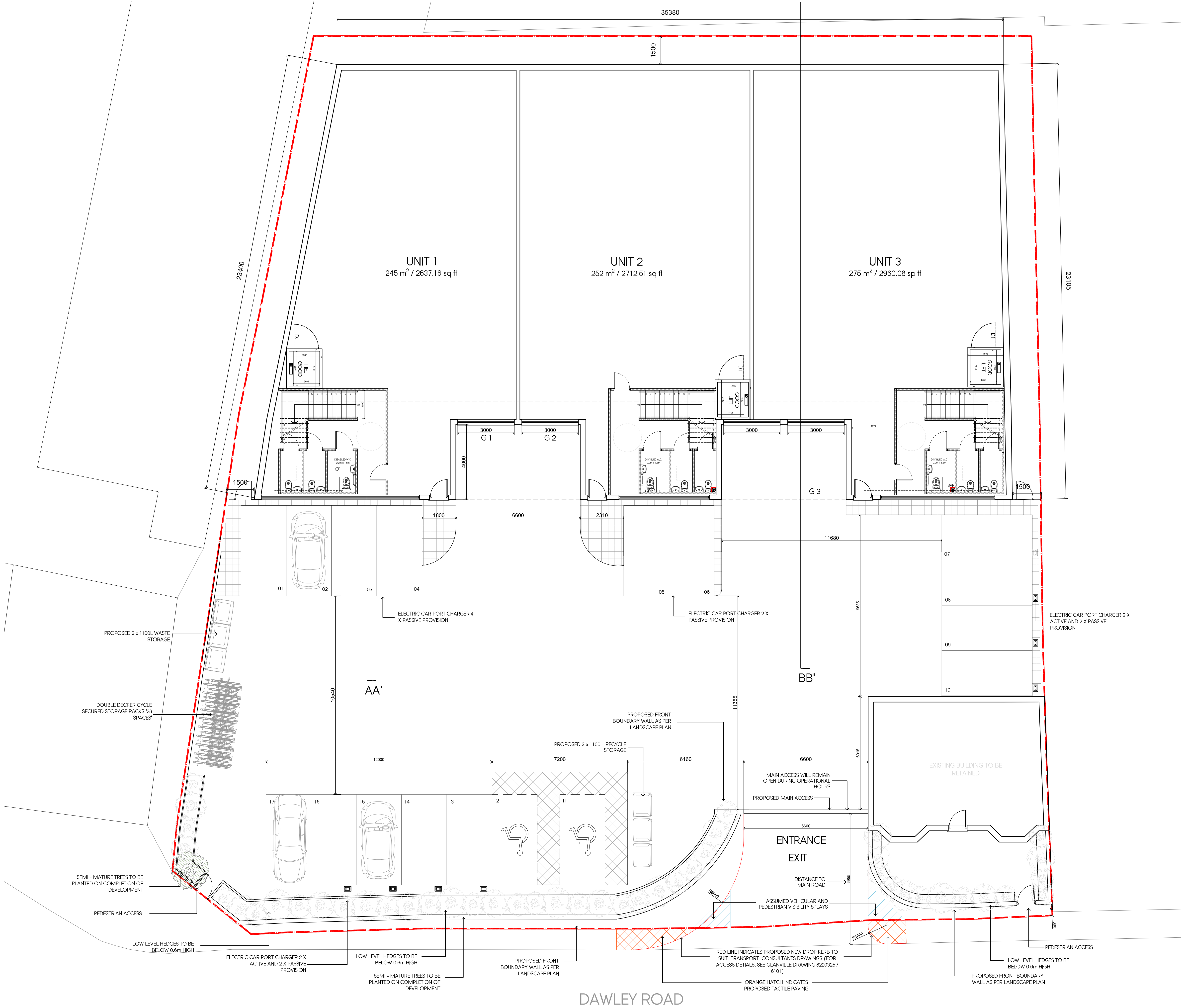
PROPOSED BLOCK PLAN

| | | |
|-------------|--------------|-------------|
| Cad File | Sheet Size | Scale |
| P002 | A1 | 1:100 |
| Drawn by | Drawing Date | Approved by |
| KP | MAR 2021 | NJ |
| Project No. | Drawing No. | Revision |
| 1627 | P103 | G |

Jutla Architects

2-4 High Street Ruitlip
Middlesex HA4 7AR
T 01922 840077 F 01922 840078
info@jutla-architects.com
jutla-architects.com

This drawing is property of Jutla Architects Ltd © and must not be copied or otherwise reproduced. All dimensions must be checked on site before commencing work. No dimensions to be scaled from this drawing. This drawing was produced using AutoCad 2016.



DAWLEY ROAD

PROPOSED BLOCK PLAN