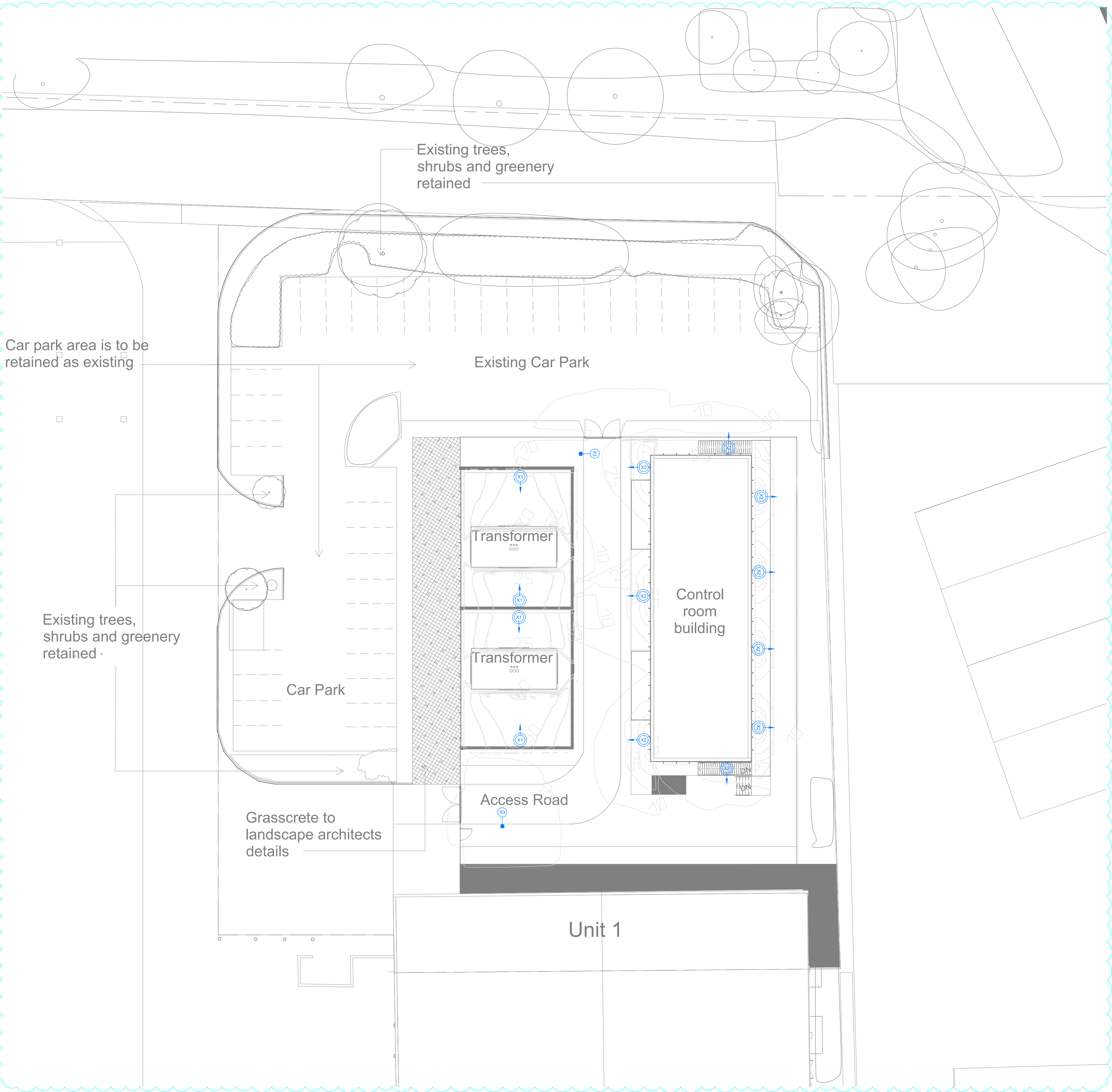


A1
1
2
3
4
5
6
7
8
9
10
11

A B C D E F G H I J K L M N



Luminaire Legend:			
	Symbol	Label	Description
		X1	Floodlight luminaire with an asymmetric (AY) optic mounted on the blast wall 8m AGL
		X2	Floodlight luminaire with an asymmetric (AY) optic mounted on building facade wall 6m AGL
		X3	Single streetlight on column with (FW) forward throw optic mounted 6m

Area/Location	Illumination Levels (Lux) FFL
Service Yard - General	20 - 50
Main Entrance	10
Pedestrian Walkways	50
Pedestrian Crossings	100

- General Notes:**
- This drawing indicates concept stage design information for external lighting. It is intended to convey design intent and should be read in conjunction with the external lighting statement.
 - This drawing is for indicative information only and is to be read with all other planning documentation.
 - All dimensions are in millimeters unless otherwise stated.
 - Do not scale from this drawing
 - Due consideration should be made when interpreting this design intent.
 - Final design and calculations to be carried out by a qualified lighting engineer/designer at the next stage.

P03	12/12/24	TM	AC	ST
Issued For Information				
P02	05/12/24	TM	AC	ST
Issued For Information				
P01	23/08/24	TM	AC	JA
Issued for Information				
Rev	Date	By	Chkd	Appd

ARUP

Central Square, Forth Street
Newcastle upon Tyne NE1 3PL
Tel +44(0)191 261 6080 Fax +44(0)191 261 7879
www.arup.com

Client
HDCI Hayes Bridge Limited

Project Title
Bullsbrook Road Substation

Drawing Title
Lighting Layout

Scale at A1	1:200
Role	Electrical
Suitability	S2 - Suitable for Information
Arup Job No	303079
Name	LOND PSS2-ARUP-SS-SS-XX-DR-E-63200
Rev	P03