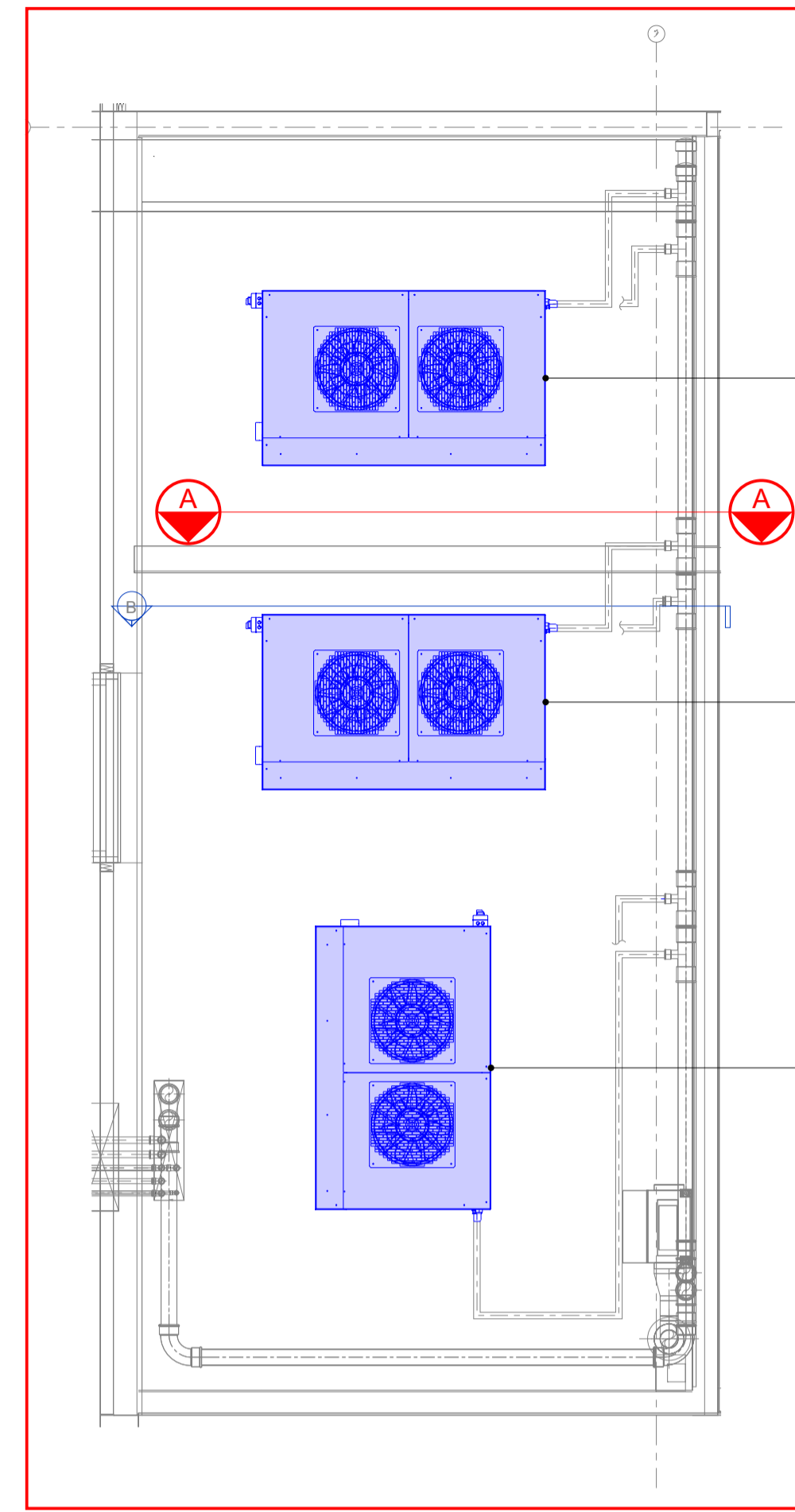


HEAT PUMP ENCLOSURE DETAIL - 1:50
EXISTING

EXISTING AIR SOURCE
HEAT PUMP
(4-MAX 06115 BY MAXA)

EXISTING AIR SOURCE
HEAT PUMP
(4-MAX 06115 BY MAXA)

EXISTING AIR SOURCE
HEAT PUMP
(4-MAX 06115 BY MAXA)

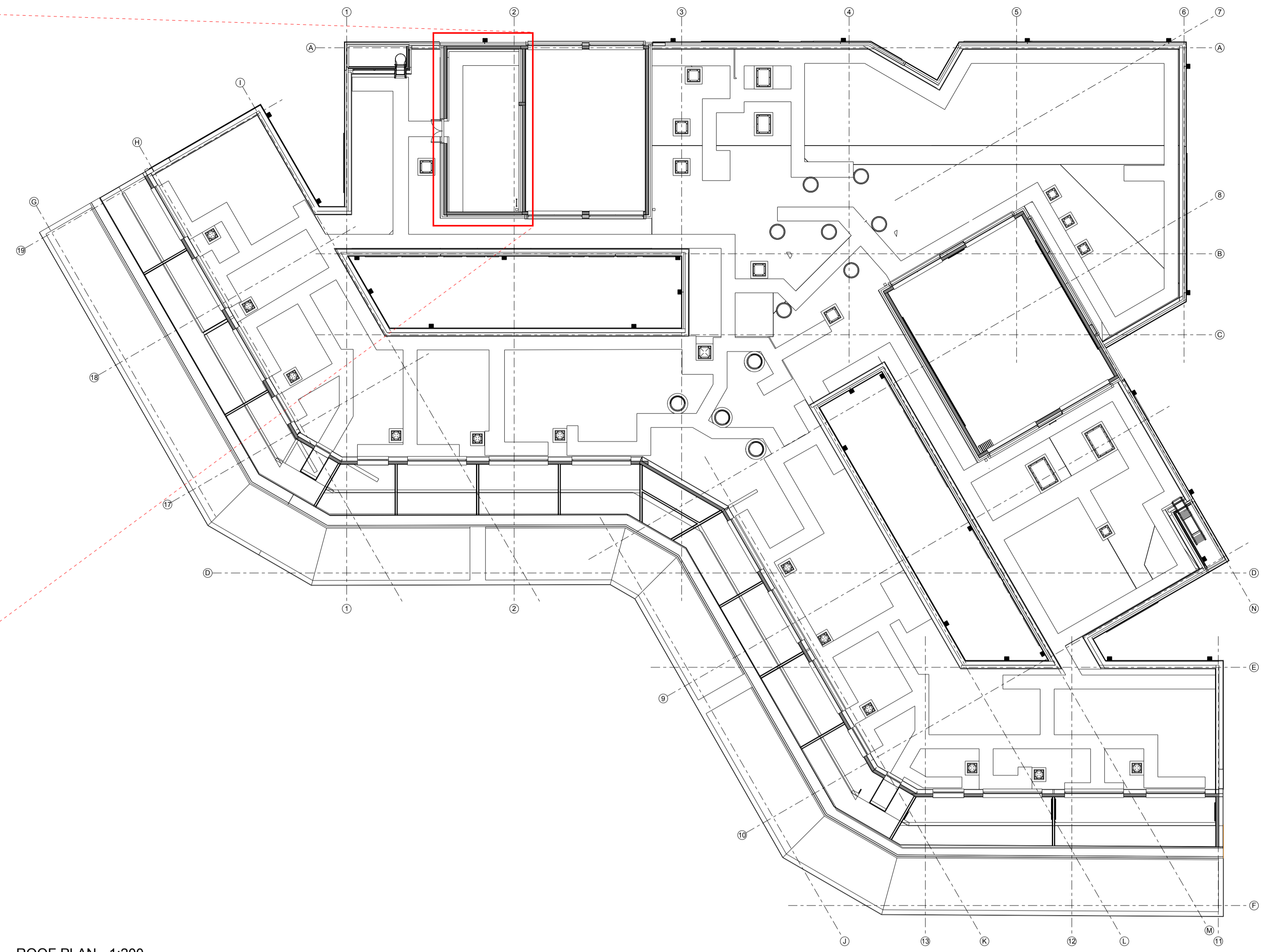


HEAT PUMP ENCLOSURE DETAIL - 1:50
PROPOSED

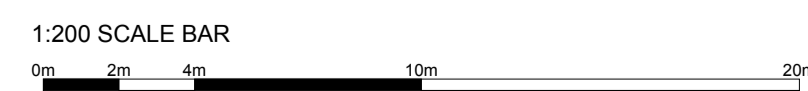
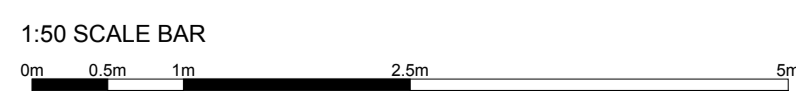
PROPOSED AIR SOURCE
HEAT PUMP
(ELM LN 75/60 BY CLADE)

PROPOSED AIR SOURCE
HEAT PUMP
(ELM LN 75/60 BY CLADE)

PROPOSED AIR SOURCE
HEAT PUMP
(ELM LN 75/60 BY CLADE)



ROOF PLAN - 1:200



CLIENT
VINCI FACILITIES

PROJECT
GRAND UNION VILLAGE SCHOOL,
BALLINGER WAY, NORTHOLT, UB5 6GG

DRAWING TITLE
GA DRAWING - ROOF PLAN

| JOB NO | DRG NO | REV | SCALE @ A1 | DATE |
|-----------------|--------|-----|------------|----------|
| WHPG 26-0102 | 02 | - | AS | 23 03 26 |

This drawing is the property and copyright of WHP Group Ltd, Stocksmoor, Huddersfield, Tel: 01762 63755. Email: tom.edwards@wiltonhorfield.co.uk and must not be amended or reproduced without written consent. Use only figured dimensions, do not scale and report any anomalies.