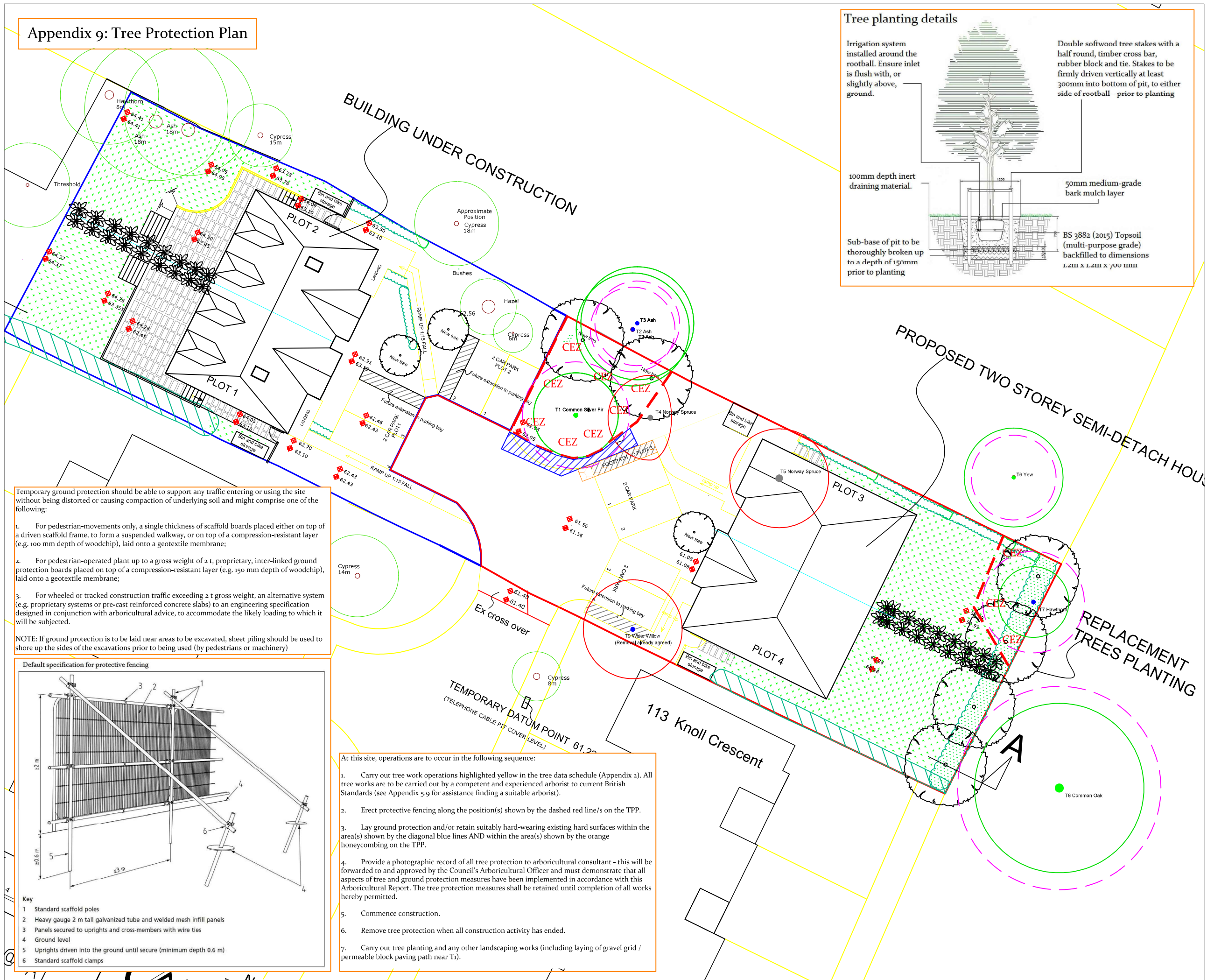
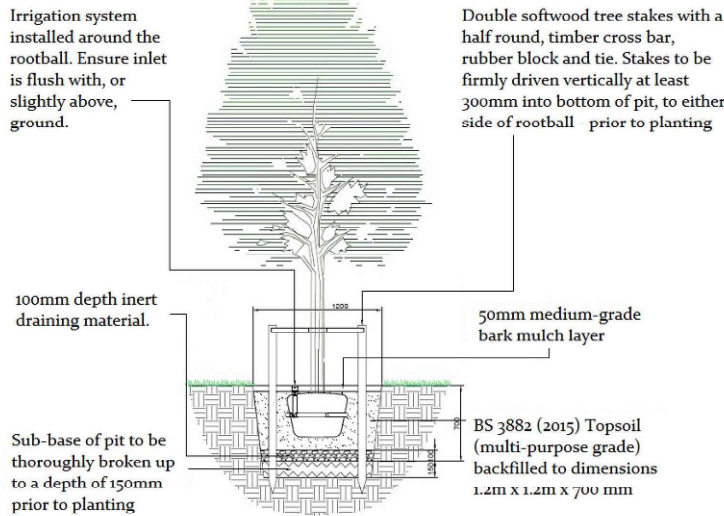


Appendix 9: Tree Protection Plan



Tree planting details



Plan Legend

- Tree/s to be retained
- Tree/s to be removed
- Centre colours
 - Category A Tree
 - Category B Tree
 - Category C Tree
 - Category U Tree
- Root Protection Area (RPA)
If amended, the original is a dotted blue circle
- Protective fencing
- CEZ
Construction & storage exclusion zone
- Ground protection
- Ground protection during construction. 'No-dig', permeable, load-spreading surfaces afterwards
- Suggested locations for new tree plantings

Scale: 1:250 @ A3
0 5m 10m

Site Address: Land adj 68 Knoll Cres
Northwood, HA6 1HW

Client: Meg Developments Ltd
Drawing No: TH/A3/3344B/TPP

Job Ref: TH 3344B Date: 20/09/2022

Trevor Heaps
Arboricultural Consultancy Ltd



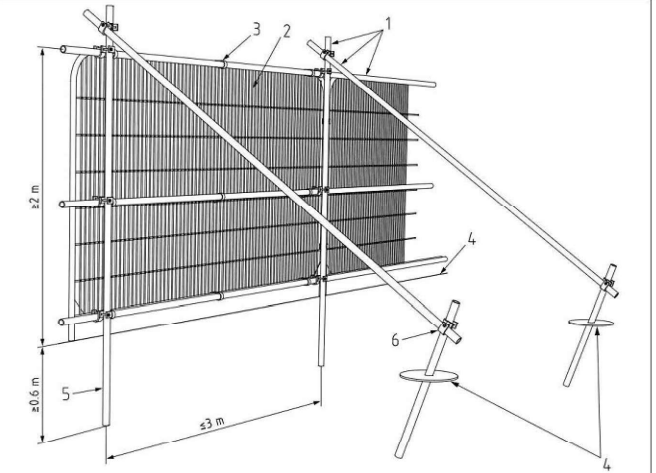
07957 763 533
trevor@trevorheaps.co.uk
www.trevorheaps.co.uk

Temporary ground protection should be able to support any traffic entering or using the site without being distorted or causing compaction of underlying soil and might comprise one of the following:

- For pedestrian-movements only, a single thickness of scaffold boards placed either on top of a driven scaffold frame, to form a suspended walkway, or on top of a compression-resistant layer (e.g. 100 mm depth of woodchip), laid onto a geotextile membrane;
- For pedestrian-operated plant up to a gross weight of 2 t, proprietary, inter-linked ground protection boards placed on top of a compression-resistant layer (e.g. 150 mm depth of woodchip), laid onto a geotextile membrane;
- For wheeled or tracked construction traffic exceeding 2 t gross weight, an alternative system (e.g. proprietary systems or pre-cast reinforced concrete slabs) to an engineering specification designed in conjunction with arboricultural advice, to accommodate the likely loading to which it will be subjected.

NOTE: If ground protection is to be laid near areas to be excavated, sheet piling should be used to shore up the sides of the excavations prior to being used (by pedestrians or machinery)

Default specification for protective fencing



- Key
- Standard scaffold poles
 - Heavy gauge 2 m tall galvanized tube and welded mesh infill panels
 - Panels secured to uprights and cross-members with wire ties
 - Ground level
 - Uprights driven into the ground until secure (minimum depth 0.6 m)
 - Standard scaffold clamps

At this site, operations are to occur in the following sequence:

- Carry out tree work operations highlighted yellow in the tree data schedule (Appendix 2). All tree works are to be carried out by a competent and experienced arborist to current British Standards (see Appendix 5.9 for assistance finding a suitable arborist).
- Erect protective fencing along the position(s) shown by the dashed red line/s on the TPP.
- Lay ground protection and/or retain suitably hard-wearing existing hard surfaces within the area(s) shown by the diagonal blue lines AND within the area(s) shown by the orange honeycombing on the TPP.
- Provide a photographic record of all tree protection to arboricultural consultant - this will be forwarded to and approved by the Council's Arboricultural Officer and must demonstrate that all aspects of tree and ground protection measures have been implemented in accordance with this Arboricultural Report. The tree protection measures shall be retained until completion of all works hereby permitted.
- Commence construction.
- Remove tree protection when all construction activity has ended.
- Carry out tree planting and any other landscaping works (including laying of gravel grid / permeable block paving path near T1).