

Gutters & Rainwater Pipes (see attached Specifications)

Name of the product: Alligator Aluminium

Colour : RAL 9005



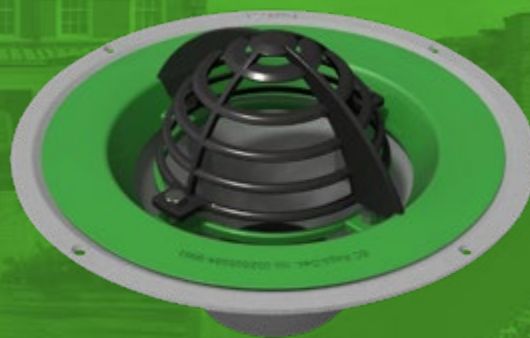
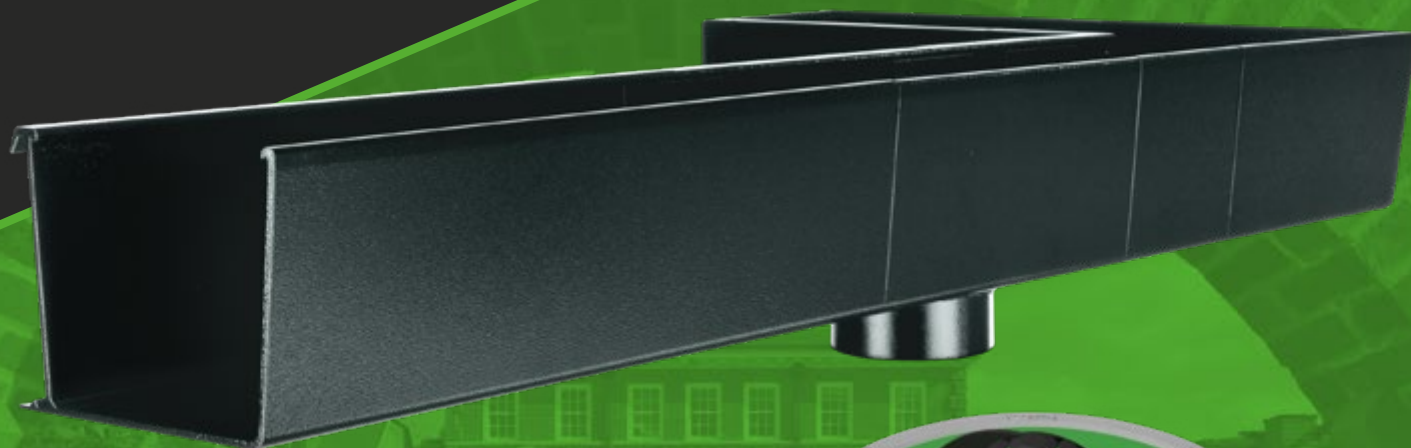
aligator

ALIGATOR GUTTER SYSTEMS

- Contemporary and sleek solution for modern building design
- Patented Aligator Snap-Fit joint system, proven to reduce installation times by up to 40% compared to traditional bolted systems
- Aligator Classic profile is a domestic size ogee style gutter system with external unions and brackets. The Deepflow, Ogee No.46, Boxer and Giant profiles are with internal joints and concealed brackets.

PRODUCT BROCHURE

The ultimate guide to aluminium gutters and downpipes systems; fascia, soffit and coping; and drainage outlets.



About Aliaxis

Aliaxis is a global leader in advanced piping systems for building, infrastructure, industrial and agriculture applications.

We provide communities around the world with sustainable innovative solutions for water and energy, leading the industry in a way that anticipates the rapidly evolving needs of its customers and of society.



With a global workforce of over 14,000 employees, Aliaxis offers specific solutions that meet our customers' most demanding needs across the globe.

We are operating in over 40 countries, combining local solutions with global innovation and operational excellence. Aliaxis is privately owned, with its global headquarters in Brussels, Belgium.

ALIAXIS IN THE UK

We are experts in fluid management solutions.

We are passionate about creating sustainable systems for water, gas and energy, leading our industry in a way that anticipates the rapidly evolving needs of our customers, ensuring peace of mind for future generations.

Our innovative portfolio of fluid management solutions for building services, infrastructure networks and industrial applications include ranges from the brands you know and love, such as: Alutec, Durapipe, GPS, Hunter Plastics, Marley Plumbing and Drainage, Multikwik, and Philmac.





Why Aluminium?

Aluminium - long lasting, low maintenance, sustainable

Made from marine grade aluminium, Alutec's products offer the very best in terms of durability, lasting for many years with minimal maintenance.

THE PROPERTIES OF ALUMINIUM - A SUSTAINABLE MATERIAL

- Low whole life costs compared to other materials
- Infinitely recyclable – 75% of all the aluminium produced since 1888 is still in use today
- Green energy – hydroelectric or geo-thermal power accounts for 60% of processing requirements

LIGHTWEIGHT, STRONG AND LONG-LASTING

Aluminium is a very light metal, about 65% lighter than steel or cast iron. It has a very high strength to weight ratio and excellent corrosion resistance.

Highly corrosion resistant Aluminium naturally generates a protective oxide coating. Should the surface be damaged, the aluminium simply oxidises again to protect itself. Add a polyester powder coating to provide an attractive and durable finish. This contrasts with steel, where galvanising only offers limited protection and cast iron, which requires regular repainting.

INFINITELY RECYCLABLE

When the old Wembley Stadium (built in 1923) was demolished, 96% of the aluminium was recovered for recycling. Aluminium can be recycled again and again without loss of quality. The re-melting of aluminium requires little energy; it saves up to 95% of the energy required for primary aluminium production.

RESPONSIBLE SOURCING

Aluminium is the World's third most abundant element. 97% of all bauxite mines in the World operate rehabilitation projects and two thirds of the employees are from the local community. The amount of electrical energy required to produce aluminium has dropped by 70% since the 1880's and 60% of that electricity is provided from renewable green energy.

Colour Options

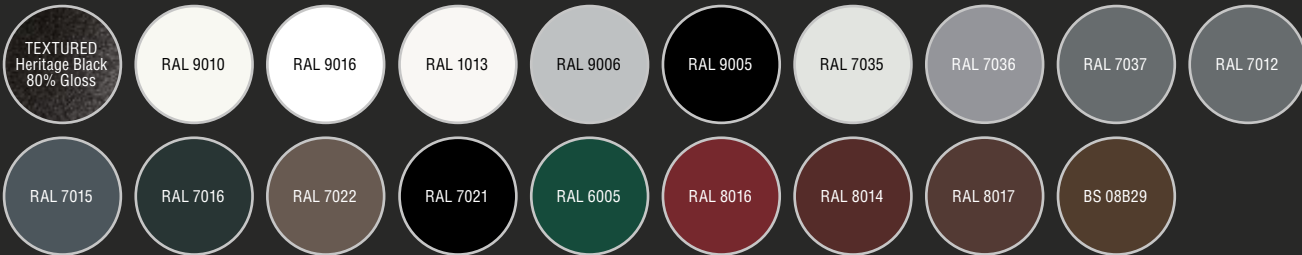


All Alutec systems are available with an architectural grade polyester powder coat (PPC) paint finish.

Architectural grade PPC paint finishes are designed for exterior use and maintain their colour and gloss level for longer. Paint's life expectancy is enhanced further by Alutec's choice of aluminium.

We only use the highest quality marine grade aluminium, greatly increasing durability. The colour range includes Heritage Black, which has a textured surface to accurately replicate the appearance of traditional cast iron gutters and downpipes.

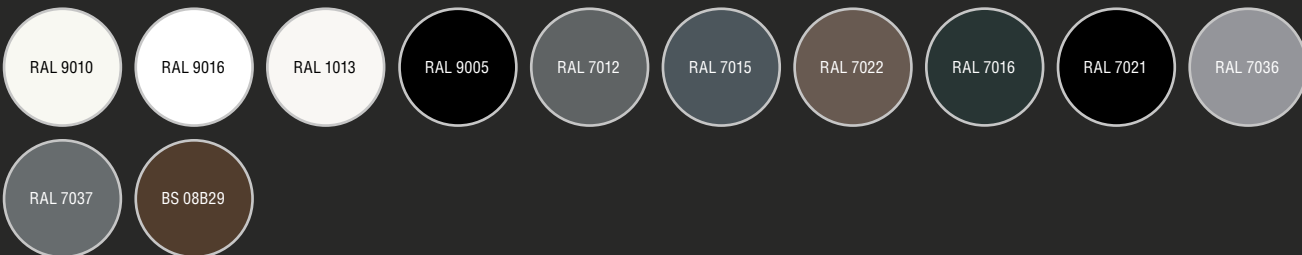
STANDARD COLOURS FOR RAINWATER AND COPING SYSTEMS



Additional colours, finishes and gloss levels are available, price on application. This chart is a representation of the actual colours, for exact match please ask for sample plates. Mill finish is also available on request.

The standard range of RAL colours are with 30% gloss level (unless otherwise stated).

STANDARD COLOURS FOR FASCIA AND SOFFIT SYSTEMS



PVDF paint system to a 30-40% gloss level.

We are able to supply our Fascia and Soffit in non-standard colours, using aluminium sheet. Please call 01234 321996 for further information or email projects@marleyalutec.co.uk

Rainwater Solutions - Gutter Systems

Alutec's marine grade aluminium gutter systems are available in a wide variety of aesthetics to suit all styles of property, offering functional life expectancy of 50 years or more with minimal maintenance, only periodic aesthetic cleaning required. The colour range is 19 standard colours with architectural grade polyester powder coat (PPC) paint finish, including Heritage Black which has a textured surface to accurately replicate the appearance of traditional cast iron.



evolve

EVOLVE GUTTER SYSTEMS

- Our range of Evolve aluminium guttering systems combine all the benefits of marine grade aluminium with installation as easy as PVC guttering
- Unique patented JuraJoint system for quick, simple and secure jointing
- Evolve Range is available in four distinctive profiles – Half Round, Deepflow, Box and Ogee



traditional

TRADITIONAL GUTTER SYSTEMS

- Manufactured to BS 8530, a complete replica of cast iron gutter systems, ideal for listed buildings and conservation areas
- 65% lighter than equivalent cast iron systems, making it easier and safer to handle and install
- Offering three bolted gutter profiles – Half Round, Victorian Ogee and Moulded Ogee



aligator

ALIGATOR GUTTER SYSTEMS

- Contemporary and sleek solution for modern building design
- Patented Aligator Snap-Fit joint system, proven to reduce installation times by up to 40% compared to traditional bolted systems
- Aligator Classic profile is a domestic size ogee style gutter system with external unions and brackets. The Deepflow, Ogee No.46, Boxer and Giant profiles are with internal joints and concealed brackets.

Gutter System Profiles

A choice of different profiles to suit all types of applications and aesthetic requirements.

GUTTER SYSTEM PROFILE	 evolve		 traditional		 aligator	
Half Round		123x51mm		100mm 113mm 125mm		
Deepflow		128x75mm				130x80mm
Ogee		130x95mm	 Victorian	100mm 113mm 125mm	 Classic	120x75mm
			 Moulded	100mm 125mm 150mm	 No. 46	155x100mm
Box		130x85mm			 Boxer	120x80mm 135x100mm 160x100mm
Giant						200x150mm

Gutter / Downpipe Selector Chart

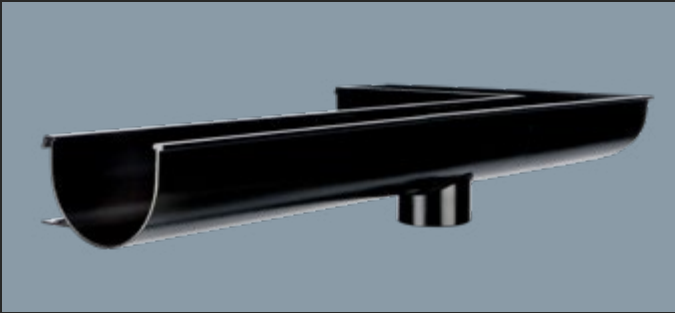


Use the table below to choose the right gutter and downpipe combination.

				DOWNPIPE SIZE					
				63mm Ø	76mm Ø	102mm Ø	72x72mm	102x76mm	102x102mm
GUTTER SYSTEMS	evolve	Half Round		✓	✓				
		Deepflow			✓				
		Box			✓		✓		
		Ogee			✓		✓		
	traditional	Half Round*		✓	✓	✓	✓	✓	
		Victorian Ogee*		✓	✓		✓	✓	
		Moulded Ogee*		✓	✓	✓	✓	✓	✓
	aligator	Classic		✓	✓		✓		
		Deepflow		✓	✓	✓	✓	✓	✓
		Ogee No. 46		✓	✓	✓	✓	✓	✓
		Boxer*		✓	✓	✓	✓	✓	✓
		Giant			✓	✓	✓	✓	✓

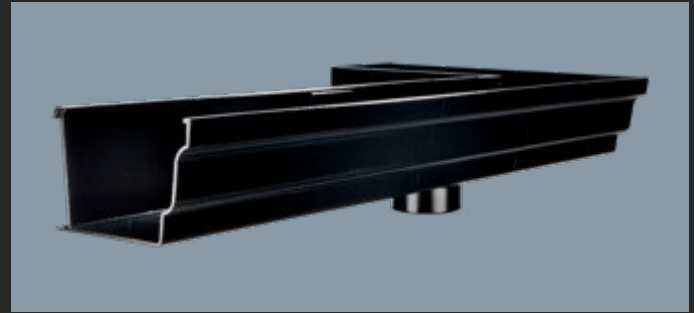
*Compatibility depends on gutter size chosen.

Aligator Gutter Profiles Overview



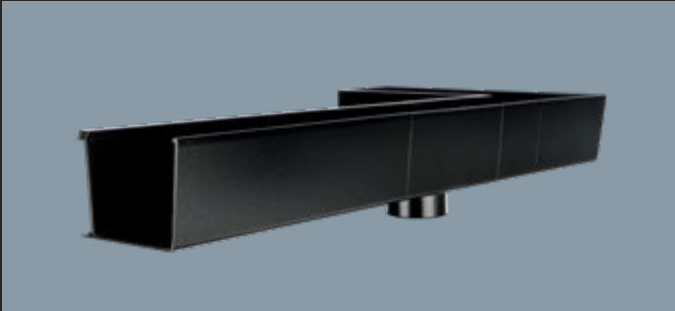
aligator DEEPFLOW

- Internal joints and concealed brackets for a completely smooth finish
- Flow rate of up to 4.4 l/s and 209m² per downpipe
- Compatible with 63mm, 76mm, 102mm, 72x72mm, 102x102mm and 102x76mm downpipes



aligator OGEE NO. 46

- Internal joints and concealed brackets for a completely smooth finish
- Flow rate of up to 7.6 l/s and 361m² per downpipe
- Compatible with 63mm, 76mm, 102mm, 72x72mm, 102x102mm and 102x76mm downpipes



aligator BOXER

- Internal joints and concealed brackets for a completely smooth finish
- Available in three sizes and ideal for small to large properties
- Flow rate of up to 7.4 l/s and 352m² per downpipe
- Compatible with 63mm, 76mm, 102mm, 72x72mm, 102x102mm and 102x76mm downpipes



aligator GIANT

- Commercial size profile with external unions and concealed supports
- Flow rate of up to 10.7 l/s and 512m² per downpipe
- Compatible with 76mm, 102mm, 72x72mm, 102x102mm and 102x76mm downpipes



aligator CLASSIC

- Domestic size ogee style profile with external unions and brackets
- Flow rate of up to 4.1 l/s and 196m² per downpipe
- Compatible with 63mm, 76mm and 72x72mm downpipes
- Only 2 days lead time for Heritage Black products

Private residence



Killin, Stirling



SNAPSHOT

The now four-bedroom residential property in the village of Killin, was extensively redeveloped and extended from the original one-bedroom home, much of which was demolished to create the new property. The design included aluminium panel for the fascia and soffits to provide a high quality, long lasting finish for the exterior of the property. The specification also included aluminium rainwater systems due to the material's longer lifespan when compared with PVCu systems.

THE SOLUTION

Demonstrating its versatility and ease of installation, Alutec's Evoke aluminium composite fascia and soffit system has been supplied where it was cut and formed on-site from standard sheets to meet the requirements of the project. Aligator Deepflow gutter system was also chosen for its strength, durability and simple installation process. Both the Evoke and Aligator systems were supplied in RAL 7016 Anthracite Grey to match other elements of the property such as the aluminium framed windows.

AT A GLANCE

Products:

- Evoke Fascia and Soffit System
- Aligator Deepflow Gutter System
- Flushfit Downpipe System

Colour:



Market sector:

Private Housing

Contractor:

Ian Brydie Construction

"Seamless aluminium gutters had been specified and on previous builds we have worked with a specialist subcontractor to fabricate it. However, we realised that with the Alutec Snap-fit solution we could achieve a seamless look but with a system that we could install ourselves. We presented this option to the client and they were keen for it to be used, especially given its strength and longevity."

Ian Brydie,
the owner of Ian Brydie Construction



Rainwater Solutions - Hopper Heads

The widest range of marine grade aluminium hoppers on the market, offering a functional life expectancy of 50 years or more with minimal maintenance, only periodic aesthetic cleaning is required. The colour range is 19 standard colours with architectural grade polyester powder coat (PPC) paint finish, including Heritage Black which has a textured surface to accurately replicate the appearance of traditional cast iron. Bespoke hoppers are available on request.



STANDARD HOPPERS

- Available in size 250x180x180mm
- Compatible with downpipe sizes 63mm, 76mm, 102mm, 72x72mm, 102x102mm and 102x76mm
- Ideal for small properties



CONTEMPORARY HOPPERS

- Available in three different options – standard, large and extended
- Compatible with downpipe sizes 63mm, 76mm, 102mm, 72x72mm, 102x102mm and 102x76mm
- Sleek and modern solution for rainwater disposal with highest flow rates on the market



ORNAMENTAL HOPPERS

- Available in size 410x190x185mm
- Compatible with downpipe sizes 63mm, 76mm, 102mm, 72x72mm, 102x102mm and 102x76mm
- Ideal for replacement of old cast iron system or reflect traditional styling on new building



FLUTED HOPPERS

- Available in size 285x21x225mm
- Compatible with downpipe sizes 63mm, 76mm and 72x72mm
- Complete the cast iron look on your property