

GROUND FLOOR LAYOUT

- Low Shrubs Planting to include**
Lavandula angustifolia, Viburnum davidii Shrub, Rosa simpliciifolia, Scilla peruviana, Echinos ritro, E. Potentilla fruticosa N, Rubus idaeus, Alliums ursinum, Scilla peruviana, Anemone nemorosa N
- Tall Shrubs Planting to include**
Cotoneaster Horizontalis, Mahonia media (Charity), Cytisus scoparius, Honeysuckle Periclymenum, Rosmarinus officinalis, Rudbeckia Herbstonne, Sambucus nigra
- Climber: Clematis Vitalba, Pyracantha coccinea (Orange Glow)**
- GRASS**
Proposed seeding/turfing:
All planting areas for seeding/turfing, 100mm min. depth; 150mm preferred of clean top soil. Top soil: Good quality in accordance with BS3882:1994.
General purpose grade or better. Depths required: all planting areas 400mm, top soiled areas to be 30mm higher than footpaths and patios. Top soil to be evenly graded and free from subsoil, contamination and debris.

Plants and Planting:
All plant material to be supplied should comply with requirements specified in BS3936:1992.
All landscape works to be in accordance with British Standard BS428:1989 Code of Practice for General Landscape Operations.
To be planted within the first planting and seeding seasons following the completion of the development of the occupation of the building, whichever is the earlier period.
The position of services, paths, parking areas and so forth, may affect and slightly alter the exact position of planting.

SPECIFICATION NOTES
-All planting and landscape operations should comply with the requirements specified in BS 3936 (1992)
-Nursery Stock Part One and BS 4428 (1989) Code of Practice for General Landscape Operations
-Existing levels to be preserved around existing trees and during construction to BS 5837:2012
-any necessary tree works to be carried out by an approved tree surgeon to BS 3998:2010
-All topsoiling work to comply with BS 3882:2007
-Trees to be anchored with Platipus Anchors or similar underground guy system
-All planting areas to receive 50mm of premium grade bark mulch
-Planting beds to receive minimum 300mm of topsoil
-Lawn areas to receive minimum 200mm of topsoil

Proposed seeding/turfing:
All planting areas for seeding/turfing, 100mm min. depth; 150mm preferred of clean top soil.
Top soil: Good quality in accordance with BS3882:1994
General purpose grade or better. Depths required: all planting areas 400mm, top soiled areas to be 30mm higher than footpaths and patios. Top soil to be evenly graded and free from subsoil, contamination and debris.

Plants and Planting:
All plant material to be supplied should comply with requirements specified in BS3936:1992.
All landscape works to be in accordance with British Standard BS428:1989 Code of Practice for General Landscape Operations.
To be planted within the first planting and seeding seasons following the completion of the development of the occupation of the building, whichever is the earlier period.
The position of services, paths, parking areas and so forth, may affect and slightly alter the exact position of planting.

- Marshalls Brindle Porous block pavours**
on Granular Fill over Terram
Permeable membrane.
- Marshalls Indian Sandstone, Grey Multi**

General specification
Imported topsoil to be general purpose to BS3882.
Tree pits to be 750x750x700mm.
shrubs planting areas 350mm depth of soil.
Lawn area - 150mm depth of soil.
All planting areas to be cultivated with incorporation of organic compost and slow release fertilizer.
On Completion, ornamental planting beds to be mulched with 50mm depth ornamental grade forest bark.
All trees to be double staked with 2 No. rubber trees ties per tree.
Works to be maintained for 24 months after practical completion.

Notes:
Proposed Shrub Planting
Shrub planting to be planted at a rate as shown in the plant schedule, to be planted in the first available planting season following the occupation of the building or the completion of the development (whichever is sooner), in a minimum 450mm depth of clean topsoil, with a minimum of 50mm approved bark mulch applied.

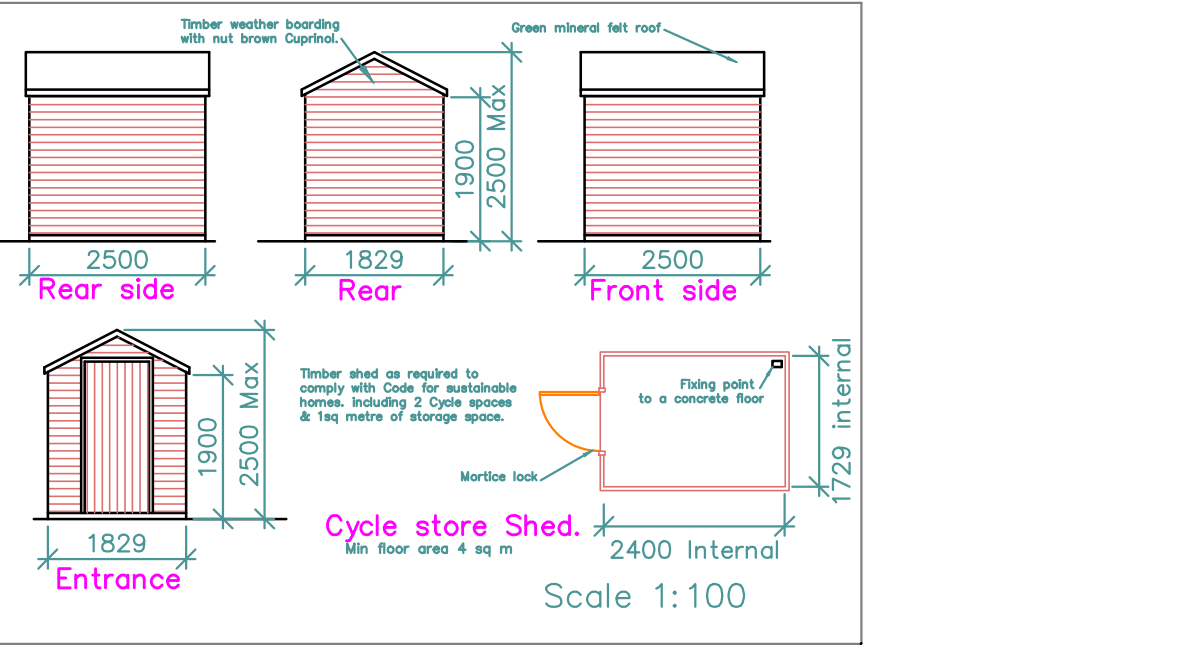
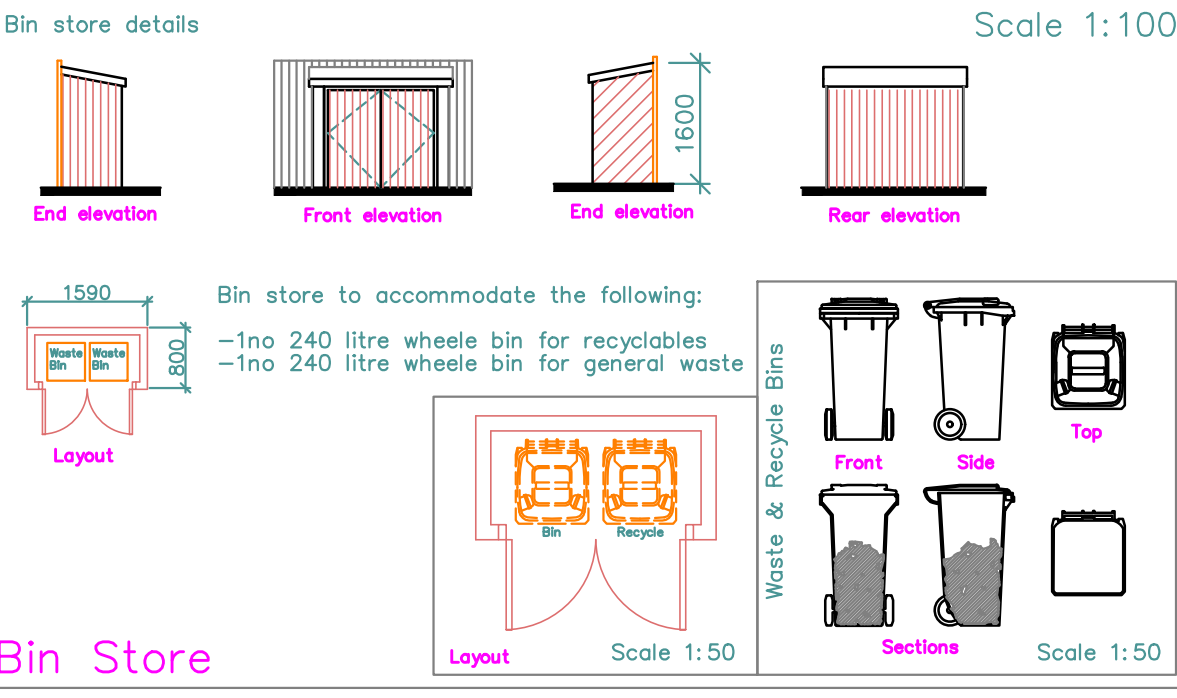
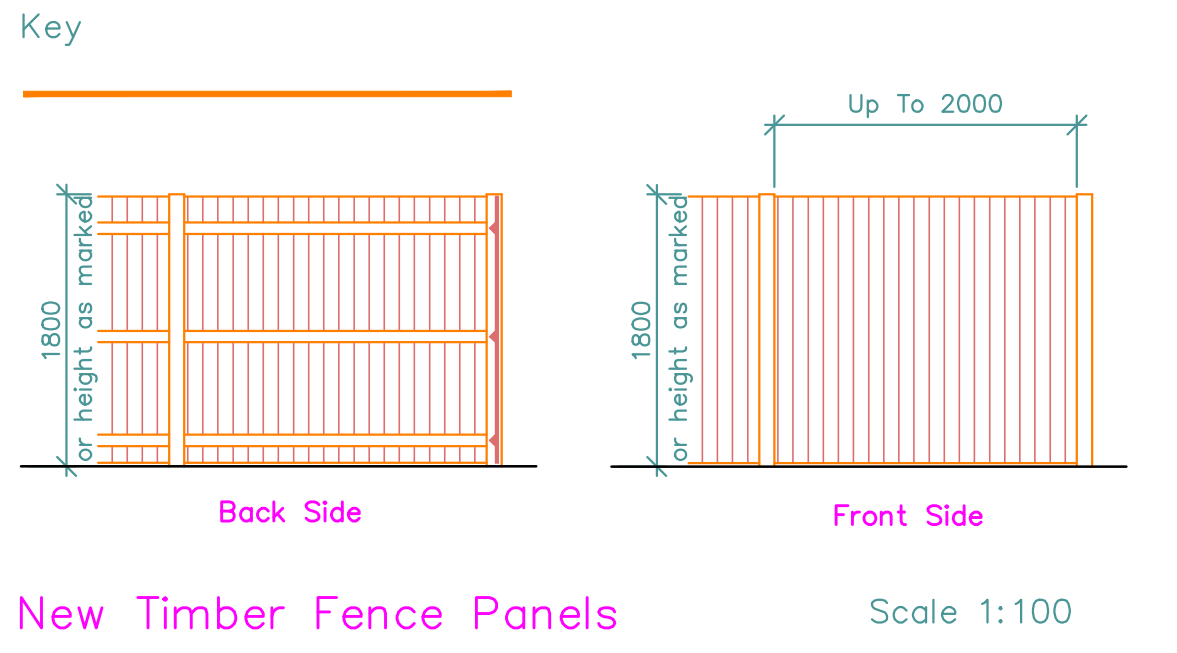
Proposed Hedgerow Planting
Hedgerow planting to be planted in double staggered row at a rate as shown in the plant schedule, to be planted in the first available planting season following the occupation of the building or the completion of the development (whichever is sooner), in a minimum 300mm depth of clean topsoil, with a minimum of 50mm approved bark mulch applied.

Proposed Seeding / Turfing
Seeding / turfing to be carried out in the first available seeding / turfing season following the occupation of the building or the completion of the development (whichever is sooner), in a minimum 150mm depth of clean topsoil.

Landscape Implementation Guidelines.
All hard and soft landscaping shall be carried out in accordance with the approved landscape scheme and shall be completed within the first planting and seeding seasons following the completion of the development or the occupation of the buildings, whichever is the earlier period.
All planting and landscape operations should comply with the requirements specified in BS 3936 (1992) Nursery Stock Part One and BS 4428 (1989) Code of Practice for General Landscape Operations (excluding hard surfaces) Any plant species shown on the approved landscape scheme which within a period of 5 years from the completion of the development dies, is removed or in the opinion of the LPA becomes seriously damaged or diseased shall be replaced in the same place in the next planting season with identical species unless the LPA gives written consent to any variation.

General Maintenance Notes.
- All planted areas to be forked through regularly to keep soil loose and aerated.
- All litter and debris to be removed from landscaped areas and carted off site.
- Plants re-firmed and straightened as required.
- Plants shall be pruned to promote healthy growth and to remove dead and diseased wood.
- Watering as required to maintain healthy growth.

Additional Notes.
- Existing levels to be preserved around existing trees and vegetation to be retained.
- Existing trees and vegetation to be retained are to be protected during construction to BS 5837:2012
- Any necessary tree works to be carried out by an approved tree surgeon to BS 3998.
- Trees, hedges and shrubs shown to be retained on the approved plan shall not be damaged, uprooted, felled, lopped or topped without the prior written consent of the local planning authority.



- Do not scale from this drawing.
 - All dimensions to be checked on site before ordering materials or commencing work.
 - In case of discrepancies in drawings, calculations or details refer to TOWER ASSOCIATES LTD for clarification: Unilateral decisions by contractors will not be accepted.
 - For any information not covered by this drawings refer to TOWER ASSOCIATES LTD for clarification: Unilateral decisions by contractors will not be accepted.
 - The contractor must ensure that work is being carried out to the latest revisions of all the working drawings.
 - It is the contractors responsibility to inform the Local Authority before work commence on site, and at all prescribed stages of work. All to the District Surveyors satisfaction.
 - If work commences on site before full plans approval has been given, TOWER ASSOCIATES LTD accept no responsibility for additional work or materials that the District Surveyor may require.
 - This drawing and all copies produced there from remain the copyright and property of TOWER ASSOCIATES . It may be reproduced by TOWER ASSOCIATES LTD. All copies must be returned to TOWER ASSOCIATES LTD if demanded.
- By using this drawing the user and his or her employer signify their agreement of the above terms and conditions.

REV.	DATE	DESCRIPTION
JDB		70 Haig Road, Uxbridge, Middlesex, UB8 3EG
TITLE		
PROPOSED LANDSCAPE LAYOUTS		
DRG. No. 3272-L-02 REV. -		
SCALE: 1:100		© Copyright 2022 DRN. BY JV
		DATE May 22
		CHECKED PDN
		DATE May 22
TOWERS ASSOCIATES LTD		
Harefield Oil Terminal, Harvil Rd, Harefield, MIDDXX. UB9 6JL.		
TEL. 01895 812822		