

Planting Schedule

Trees

Species Name	Girth	Height	Density	Specification	No.
Acer campestre 'Streetwise'	12-14cm	350-425cm	Counted	Heavy Standard : Clear Stem min. 200	RB1 -

Shrubs

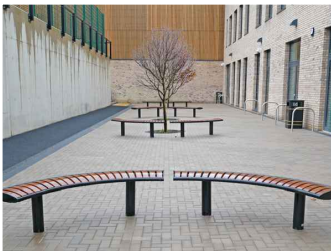
Species Name	Height	Pot Size	Specification	Density	No.
Ceanothus 'Blue Mound'	60-80cm	5-7.5L	Bushy	4/m ²	8 -
Euonymus fortunei 'Emerald Gaiety'	30-40cm	3L	Bushy	6/m ²	17 -
Hebe 'Midsummer Beauty'	40-60cm	5-7.5L	Bushy	4/m ²	12 -
Lavandula angustifolia 'Hidcote'	30-40cm	3L	Bushy	4/m ²	7 -
Pittosporum tenuifolium 'Tom Thumb'	30-40cm	3L	Bushy	4/m ²	16 -
Salvia officinalis 'Purpurascens'	30-40cm	3L	Bushy	4/m ²	7 -
Viburnum tinus 'Eve Price'	30-40cm	3L	Bushy	4/m ²	12 -



Proposed 1.8m high automated double leaf ornamental gate



Proposed Quintet Bin Store, 1200 x 3550 x 804 mm. (H/W/D)



Zenith Curved Bench from Furnitubes or similar and approved.



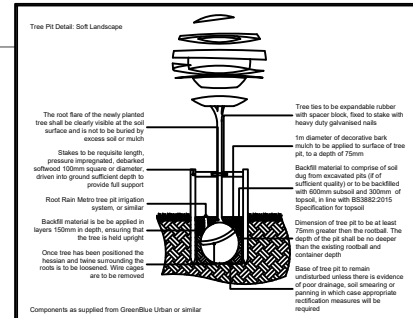
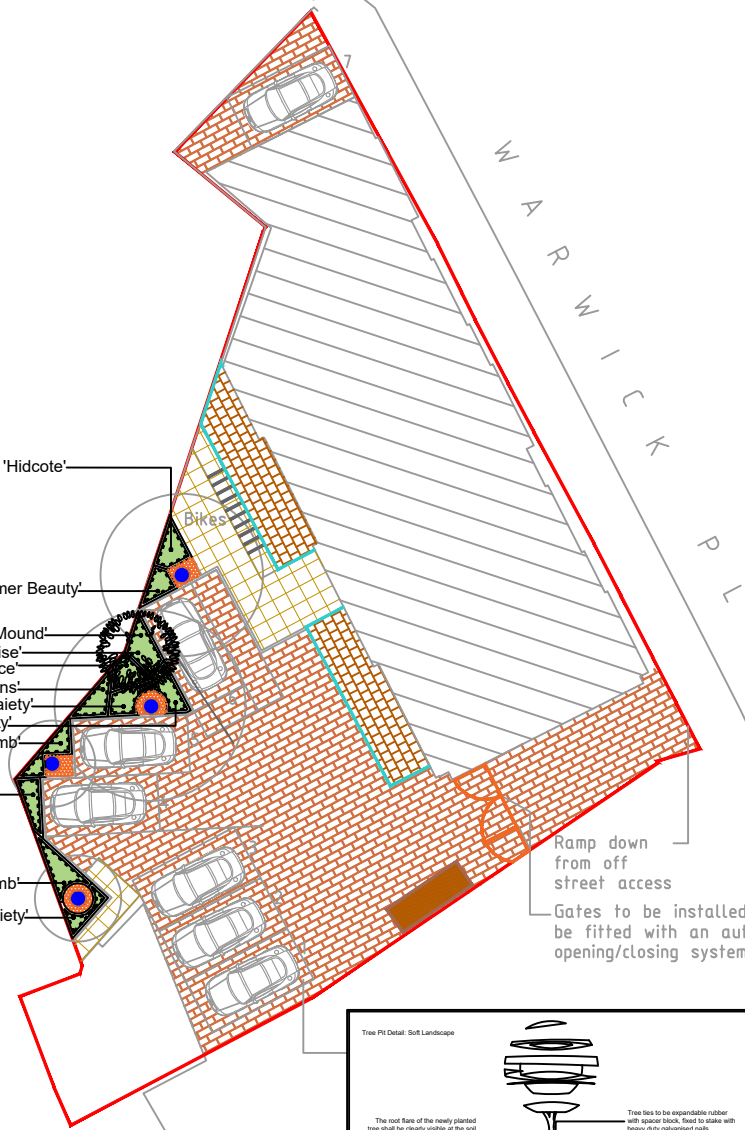
Sheffield cycle stand in stainless steel, from Broxap street furniture or similar and approved.

- 7No Lavandula angustifolia 'Hidcote'
- 5No Hebe 'Midsummer Beauty'
- 8No Ceanothus 'Blue Mound'
- 1No Acer campestre 'Streetwise'
- 6No Viburnum tinus 'Eve Price'
- 7No Salvia officinalis 'Purpurascens'
- 10No Euonymus fortunei 'Emerald Gaiety'
- 7No Hebe 'Midsummer Beauty'
- 8No Pittosporum tenuifolium 'Tom Thumb'
- 6No Viburnum tinus 'Eve Price'
- 8No Pittosporum tenuifolium 'Tom Thumb'
- 7No Euonymus fortunei 'Emerald Gaiety'

'Planting to commence upon completion of the hard landscaping areas'

Trees to be planted between November and April

Containerized shrubs can be planted year round



- Legend**
- Proposed tree planting within soft landscape. See detail on sheet
 - Proposed shrub planting to receive 75mm bark mulch after planting operations
 - Alpha paving in burnt oak laid in staggered pattern, with white blocks to demarcate parking spaces, from Street Landscaping or equivalent. Laid in line with engineer's details.
 - Bronze paving in apricot can be laid in various patterns, from Street Landscaping or equivalent. Laid in line with engineer's details.
 - Standard flag paving laid in full to terraced areas. From Brett Landscaping or equivalent. Laid in line with engineer's details.
 - Proposed areas of aggregate chippings for top dressing. Laid over a weed proof membrane
 - 1.8m High Closeboard Fence
 - Zenith curved bench from Furnitubes or equivalent
 - Proposed Sheffield cycle stand
 - Proposed Quintet Bin Store, from wheelite bin storage direct or equivalent
 - Proposed 1.8m high double leaf automated ornamental gate, with attached pocket door gate from Jacksons Security or equivalent
 - Electric charging points. Will be provided to 4 parking bays.

No.	Date	Details	By	Checked
1	13.04.26	Client comments	JO	
2	10.04.26	Client comments	JO	
3	27.03.26	Layout change	JO	
4	07.02.22	Change to parking layout	JO	
5	14.08.22	Client Comments	JO	
6	12.04.22	Client Comments	JO	
7		Details	JO	

ACD ENVIRONMENTAL

HEAD OFFICE
Rodbourse Dale Business Centre, Grange Lane,
Malmesbury, SN16 0ES
Tel 01666 823446

4 & 5 The Old Mill, Fry's Yard, Bridge Street,
Codicoyne, G12 7HP
Tel 01483 423714

Suite 6, Crescent House, Yonge Close,
Epsom, Surrey, Surrey, Surrey, Surrey, Surrey,
Tel 02382 026300
www.acdenvironmental.co.uk
email: melli@acdenvironmental.co.uk

SHIELD SYSTEMS

scheme: 122-123 High Street,
Uxbridge
client: Shield Berks Ltd
drawing: Landscape Proposals
date: June 2026
scale: 1:100@A1
drawing no: PRI23547 - 14
drawn: JO checked: DKM

Copyright of ACD Environmental Ltd. All rights reserved in Chapter IV of the Copyright, Design and Patents Act 1988 have been generally asserted 2015. Copyright of this plan is reserved by ACD Environmental Ltd. All rights reserved.

Components as supplied from GreenBlue Urban or similar