

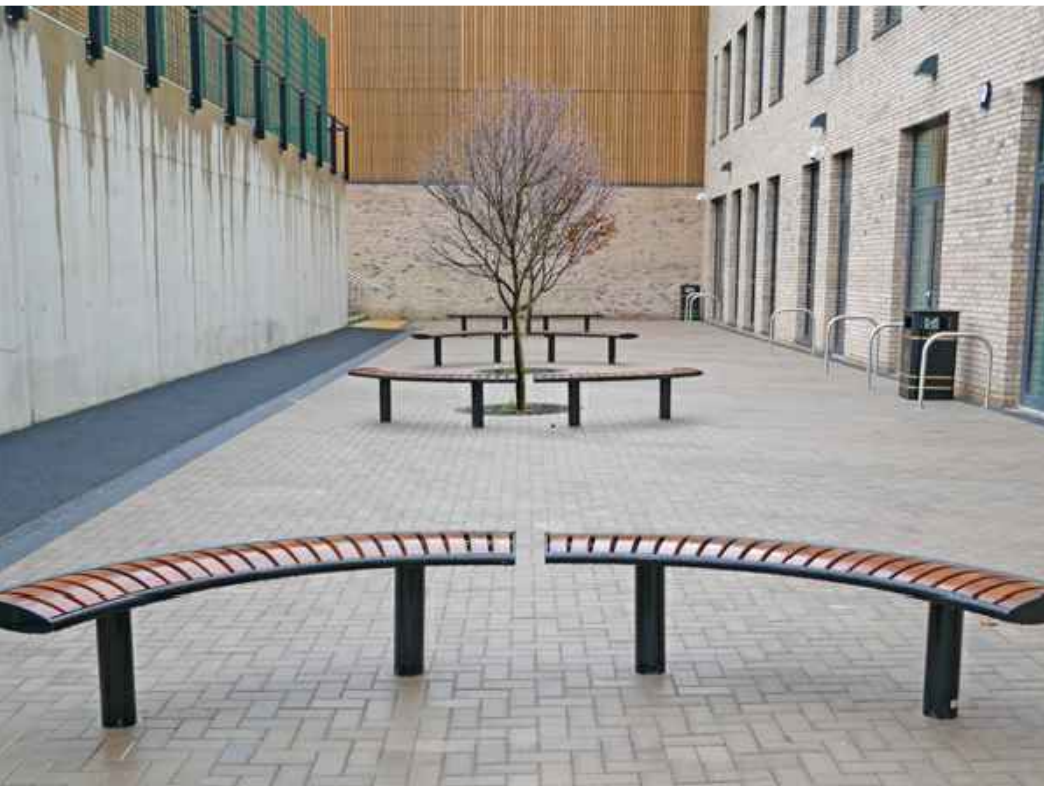
Planting Schedule

Trees					
Species Name	Girth	Height	Density	Specification	No.
Magnolia grandiflora 'Exmouth'		80-100cm	Counted	Standard: RB: C	2 -
Acer campestre 'Streetwise'	12-14cm	350-425cm	Counted	Heavy Standard :Clear Stem min. 200 :RB	1 -

Shrubs					
Species Name	Height	Pot Size	Specification	Density	No.
Carpinus betulus	40-60cm	5L	Bushy	0.5Ctr Double Staggered at 0.4m offset	94 -
Ceanothus 'Blue Mound'	60-80cm	5-7.5L	Bushy	4/m <sup>2</sup>	12 -
Escallonia 'Apple Blossom'	40-60cm	3L	Bushy	4/m <sup>2</sup>	5 -
Euonymus fortunei 'Emerald Gaiety'	30-40cm	3L	Bushy	6/m <sup>2</sup>	12 -
Hebe 'Midsummer Beauty'	40-60cm	5-7.5L	Bushy	4/m <sup>2</sup>	8 -
Lavandula angustifolia 'Hidcote'	30-40cm	3L	Bushy	4/m <sup>2</sup>	14 -
Pittosporum tenuifolium 'Tom Thumb'	30-40cm	3L	Bushy	4/m <sup>2</sup>	7 -
Salvia officinalis 'Purpurascens'	30-40cm	3L	Bushy	4/m <sup>2</sup>	6 -
Viburnum tinus 'Eve Price'	30-40cm	3L	Bushy	4/m <sup>2</sup>	15 -



Proposed 1.8m high automated double leaf ornamental gate



Zenith Curved Bench from Furnitubes or similar and approved.



Proposed Quintet Bin Store, 1200 x 3550 x 804 mm. (H/W/D)



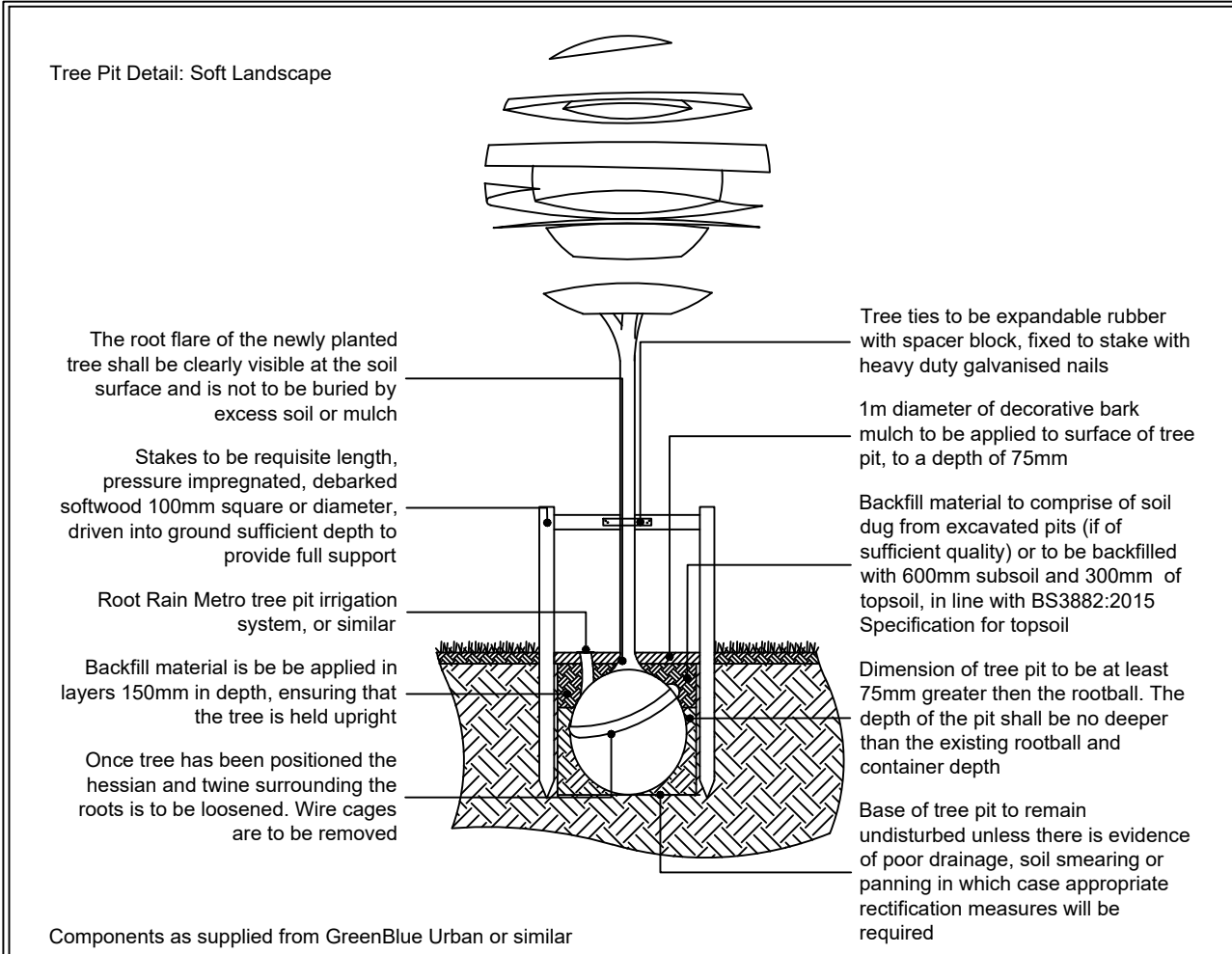
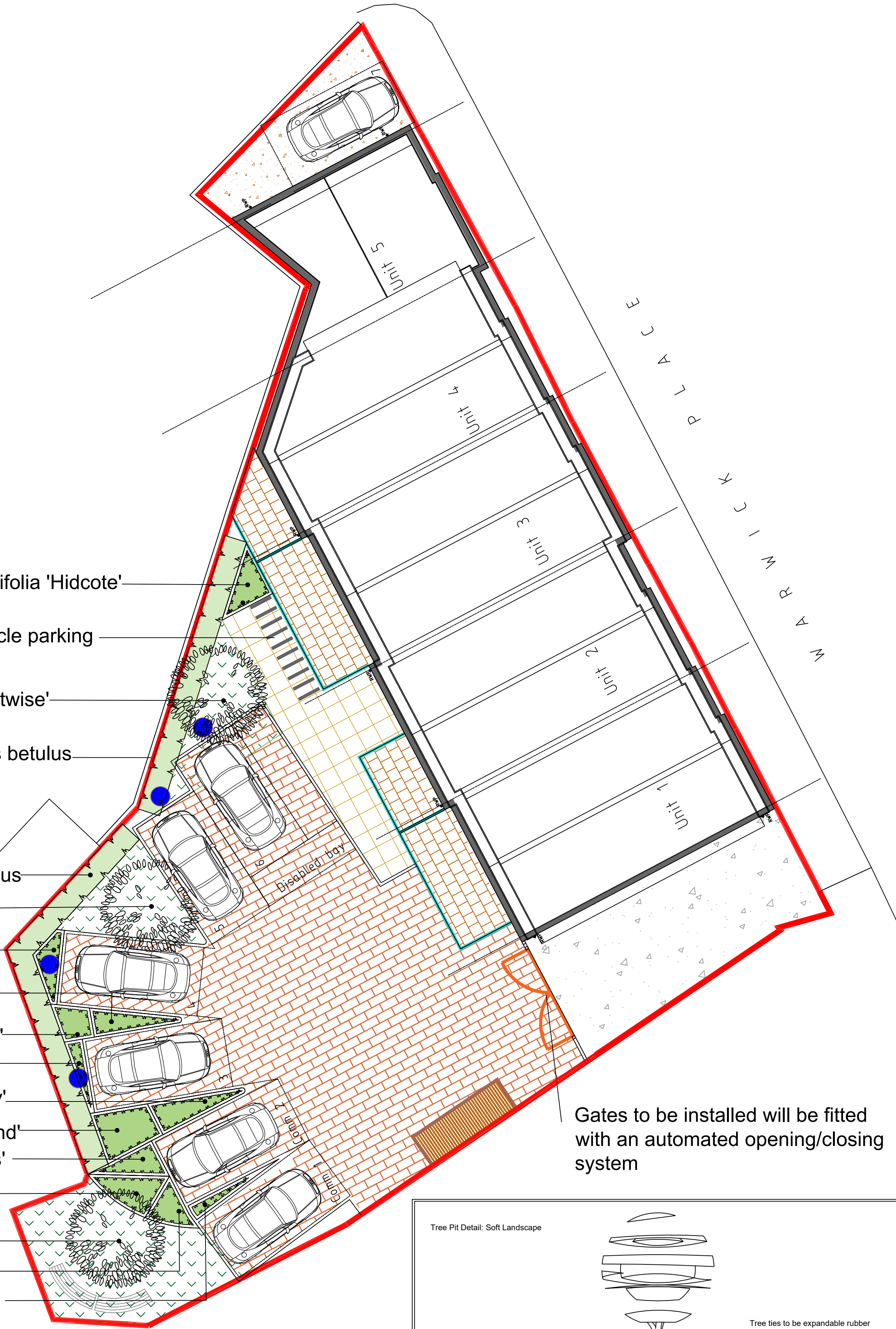
Sheffield cycle stand in stainless steel. From Broxap street furniture or similar and approved.

- 8No Lavandula angustifolia 'Hidcote'
- Cycle parking
- 1No Acer campestre 'Streetwise'
- 39No Carpinus betulus
- 55No Carpinus betulus
- 1No Magnolia grandiflora 'Exmouth'
- 6No Viburnum tinus 'Eve Price'
- 7No Pittosporum tenuifolium 'Tom Thumb'
- 5No Escallonia 'Apple Blossom'
- 6No Euonymus fortunei 'Emerald Gaiety'
- 8No Hebe 'Midsummer Beauty'
- 12No Ceanothus 'Blue Mound'
- 6No Salvia officinalis 'Purpurascens'
- 9No Viburnum tinus 'Eve Price'
- 1No Magnolia grandiflora 'Exmouth'
- 6No Lavandula angustifolia 'Hidcote'
- 6No Euonymus fortunei 'Emerald Gaiety'

**'Planting to commence upon completion of the hard landscaping areas'**

**Trees to be planted between November and April**

**Containerized shrubs can be planted year round**



Legend

- Proposed tree planting within soft landscape. See detail on sheet
- Proposed Carpinus (hornbeam) hedge planting to be planted in a double staggered row 300mm apart and at 400mm centres in each row. To be maintained at 1m height
- Proposed shrub planting to receive 75mm bark mulch after planting operations
- Proposed Flowering Lawn, to be seeded with EL1 flowering lawn mixture as supplied by Emorsgate Seed and sown at 4 grams per msq, or similar and approved
- Tarmac to road and footpaths. Laid in line with engineer's details
- Alpha paving in burnt oak laid in staggered pattern, with white blocks to demarcate parking spaces, from Brett Landscaping or similar and approved. Laid in line with engineer's details.
- Bronte paving in apricot can be laid in various patterns, from Brett Landscaping or similar and approved. Laid in line with engineer's details.
- Stamford flag paving laid in buff to terraced areas. From Brett Landscaping or similar and approved. Laid in line with engineer's details.
- Proposed Resin Bound Naturelle Gravel to driveway/parking bay with metal stud to demarcate parking spaces, as supplied from Resindrives or similar and approved.
- 1.8m High Closeboard Fence
- Zenith curved bench from Furnitubes or similar and approved
- Proposed Sheffield cycle stand
- Proposed Quintet Bin Store, from wheeline bin storage direct or similar and approved
- Proposed 1.8m high double leaf automated ornamental gate, from Jacksons Security or similar and approved.
- Electric charging points. Will be provided to 4 parking bays

0 1 2 3 4 5m

Rev	Date	Details	Drawn
C	27.07.22	Change to parking layout	PD
B	14.06.22	Client Comments	JO
A	12.04.22	Client Comments	JO



HEAD OFFICE  
Rodbourn Rail Business Centre, Grange Lane,  
Malmesbury, SN16 0ES  
Tel: 01666 825646

4 & 5 The Old Mill, Fry's Yard, Bridge Street,  
Godalming, GU7 1HP  
Tel: 01483 425714

Suite 6, Crescent House, Yonge Close,  
Eastleigh, SO50 9SX  
Tel: 02382 026300

email: mail@acdenv.co.uk  
www.acdenvironmental.co.uk



scheme: 122-123 High Street,  
Uxbridge

client: Shield Berks Ltd  
drawing: Landscape Proposals

date: January 2022

scale: 1:100@A1

drawing no: PRI23547 - 11

drawn: JO checked: DKM

Copyright of ACD Environmental Ltd. All rights described in Chapter IV of the Copyright, Designs and Patents Act 1988 have been generally asserted. 201. Copyright of this plan remains with ACD until all fees have been paid in full.