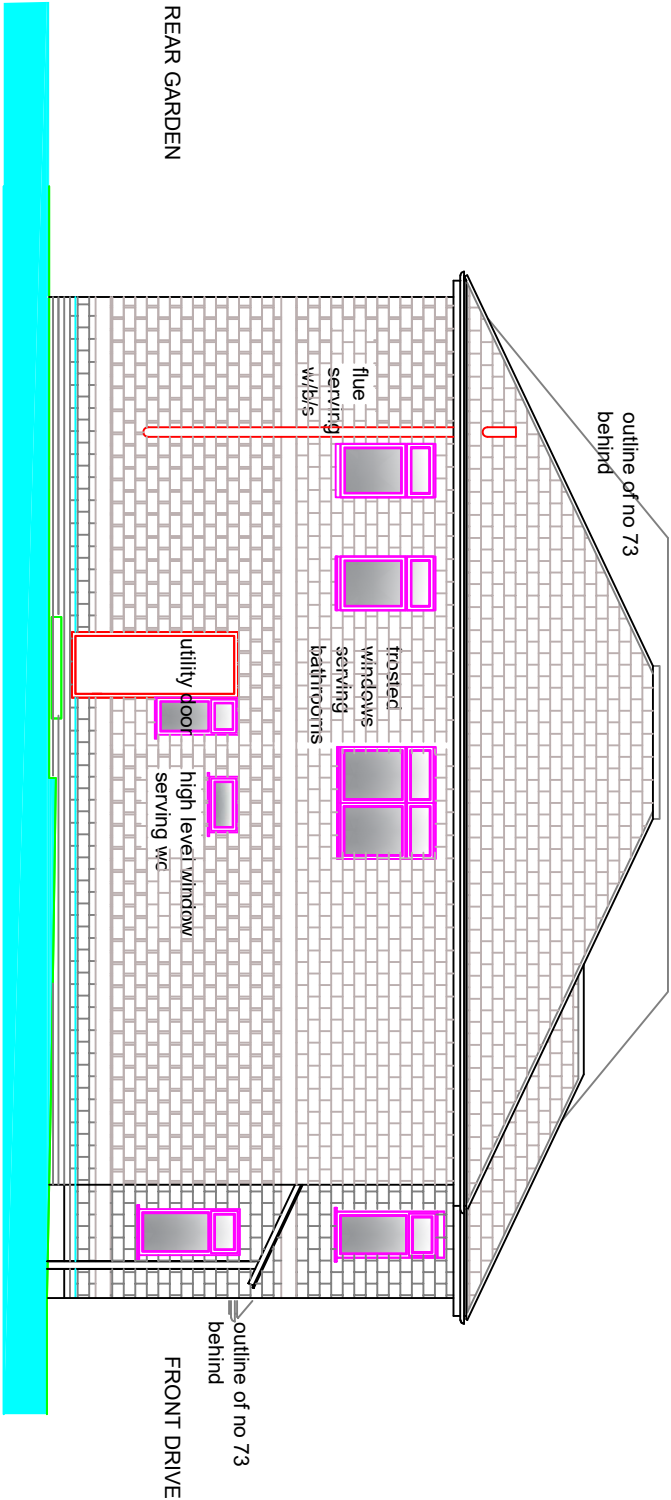


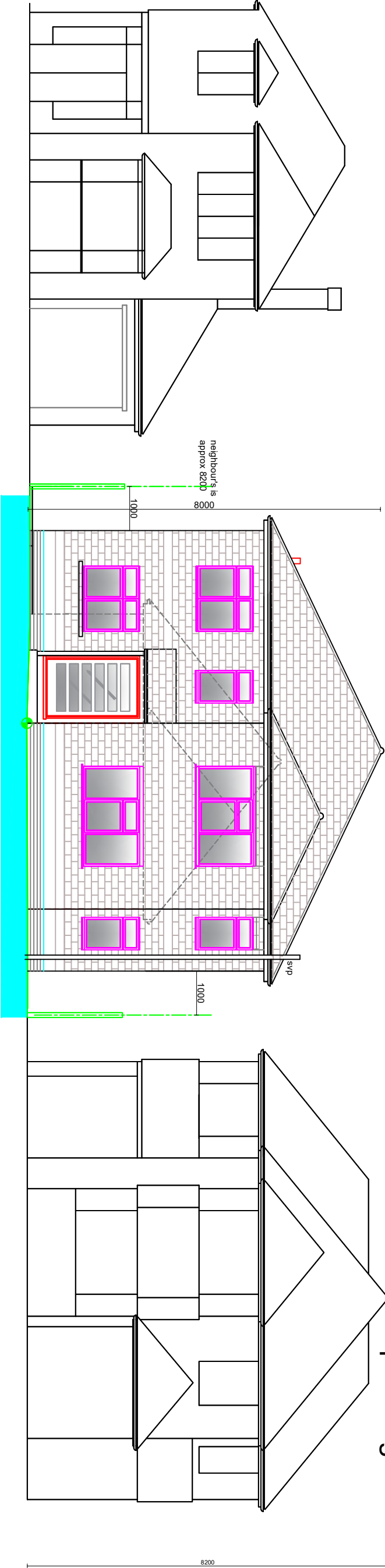
A3 PAPER

REVISIONS

- A 14/10/24 white render reference removed
- B 13/02/25 updated to meet planning guidance
- C 06/05/25 corner niche removed further to planning granted to no 69
- D 14/08/25 single storey side extension removed further to planning direction



N<sup>o</sup>71 (N<sup>o</sup>73)  
NORTH SIDE ELEVATIONS WITH NO 73 SHADOWED BEHIND



N<sup>o</sup>69 N<sup>o</sup>71 N<sup>o</sup>73  
FRONT ELEVATIONS OF PROPERTIES STREET VIEW

024/406/017D