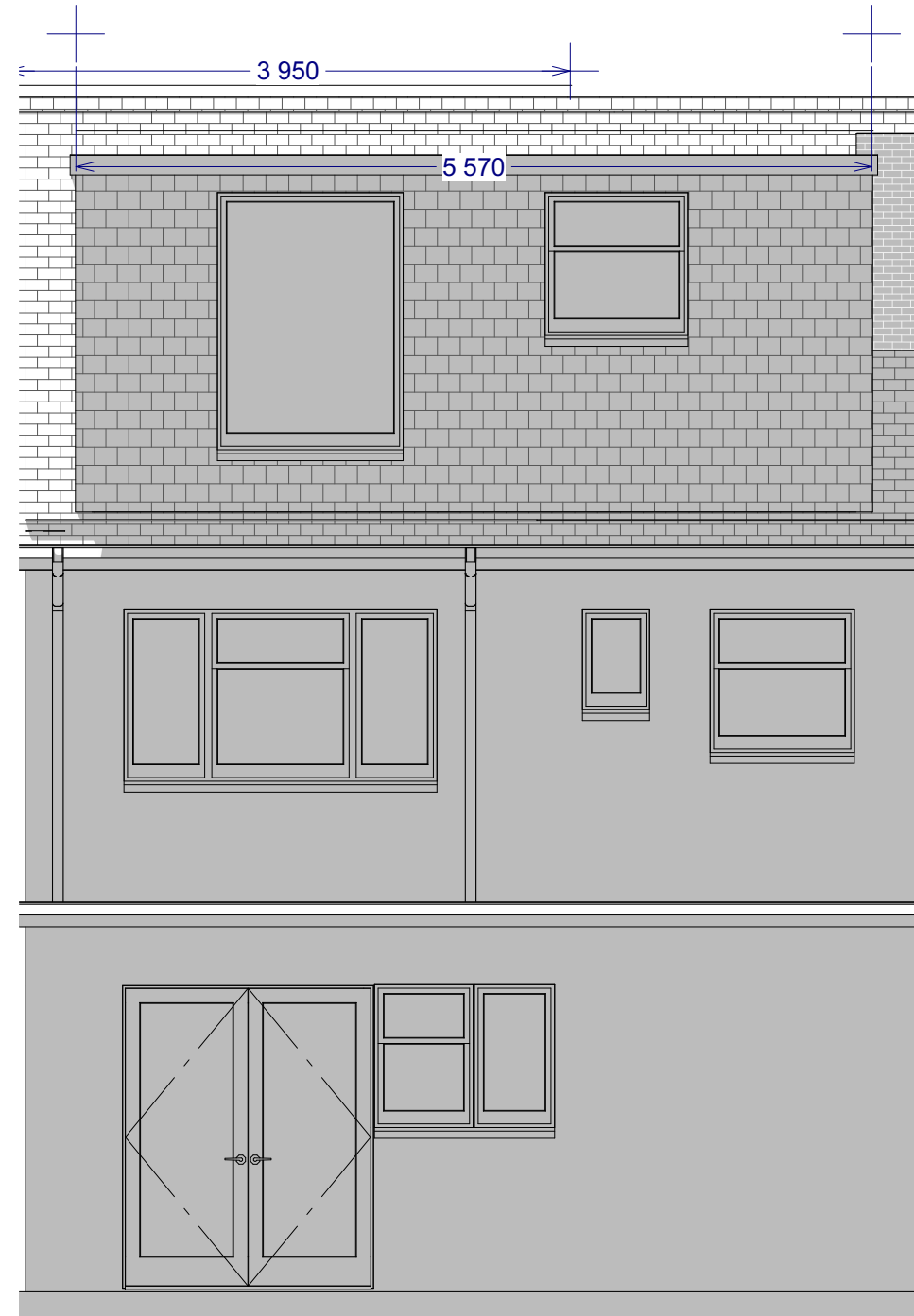


Exterior Elevation Right



Exterior Elevation Back

Hip to gable volume calculator			
length for hip to gable end (L)	height for hip to gable (H)	formula	area of base
7.89	3.15	$\frac{1}{2} \times L \times H$	12.42675
formula hip to gable = $\frac{1}{3}$ (base x gable extension length)			
12.42675	area of base		
gable extension for hip to gable formula (length of ridge)		$\frac{1}{3} \times \text{area of base} \times \text{gable extension}$	
3.95			
16.36025131	volume (m3)		
<div><div><div>height for hip to gable formula</div><div>length for hip to gable formula</div><div>depth for volume for rear dormer</div></div><div><div>gable extension for hip to gable formula</div><div>length of dormer</div></div></div>			
Flat Roof Dormer Volume Calculator			
depth for volume for rear dormer	length of dormer	height of dormer	$\frac{1}{2} \times \text{depth} \times \text{length} \times \text{height}$
3.34	5.57	2.5	23.25475
Total Volume Increase	33.61500131 m3		

HIP TO GABLE VOLUME CALCULATION

Sheet #

7

Drawn By:

KS

Date:

05/11/2025

Scale:

1:50 @A3

106 West End Road