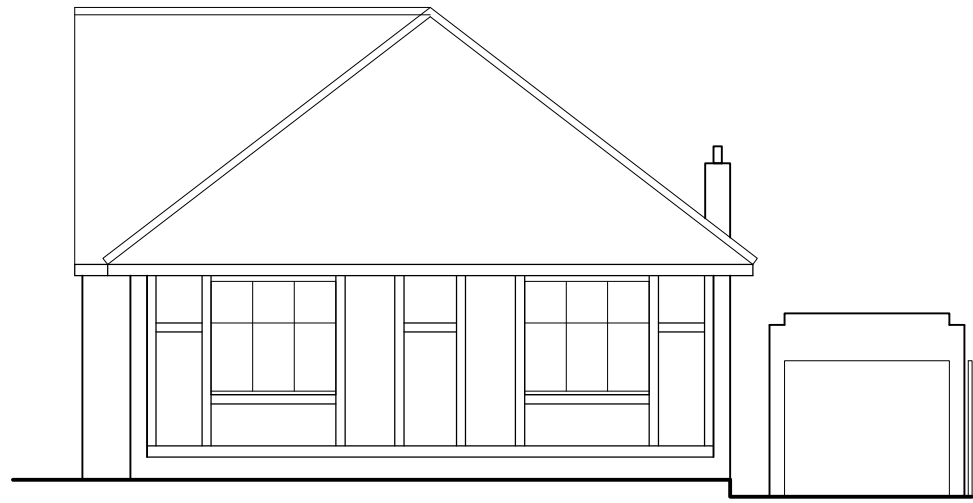
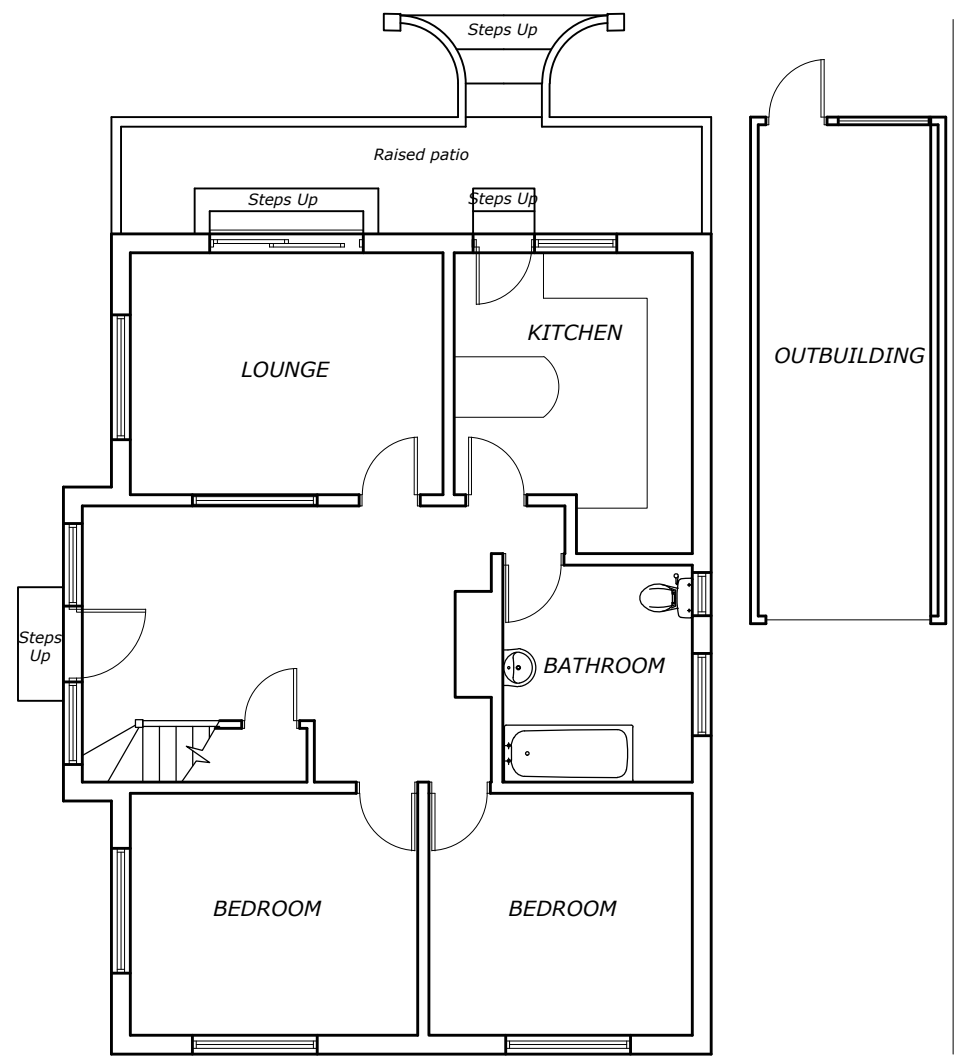


Rev. A - Proposed steps out from rear  
adjusted to be same as existing. 14-8-24



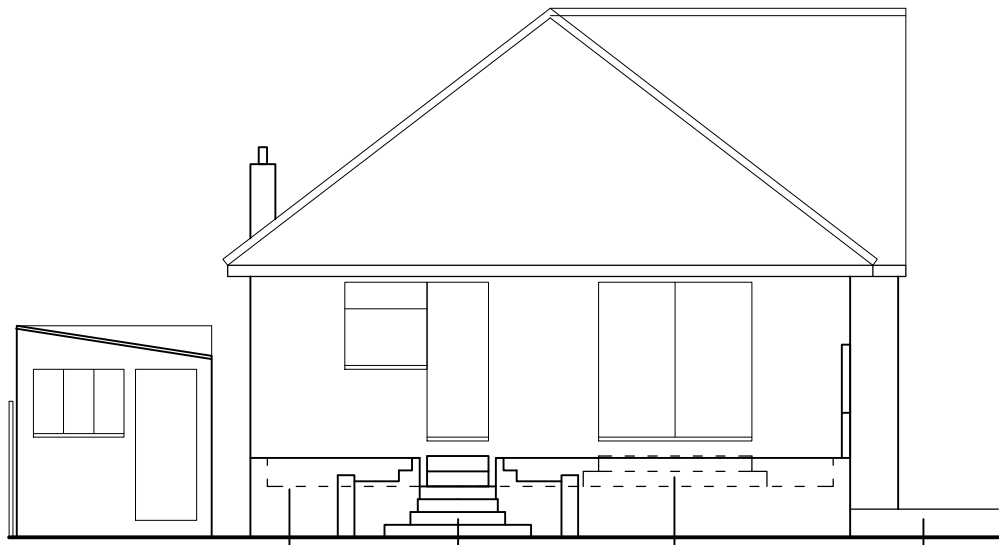
FRONT



SIDE

Steps up to raised patio level

Raised patio level



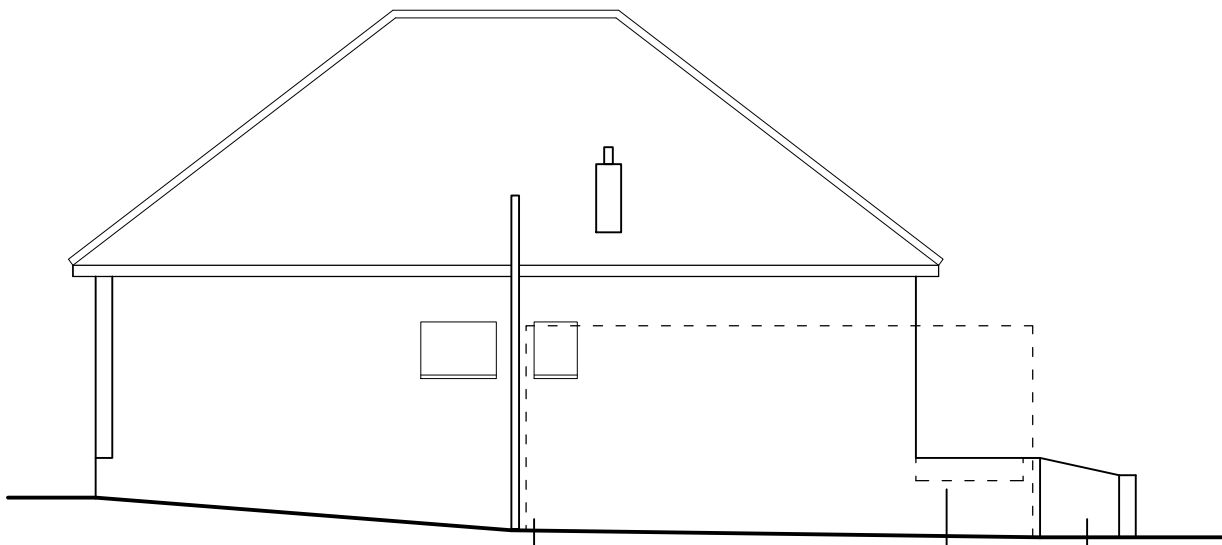
REAR

Raised patio level

Steps up to raised patio level

Steps up from raised patio level into house

Rising ground levels



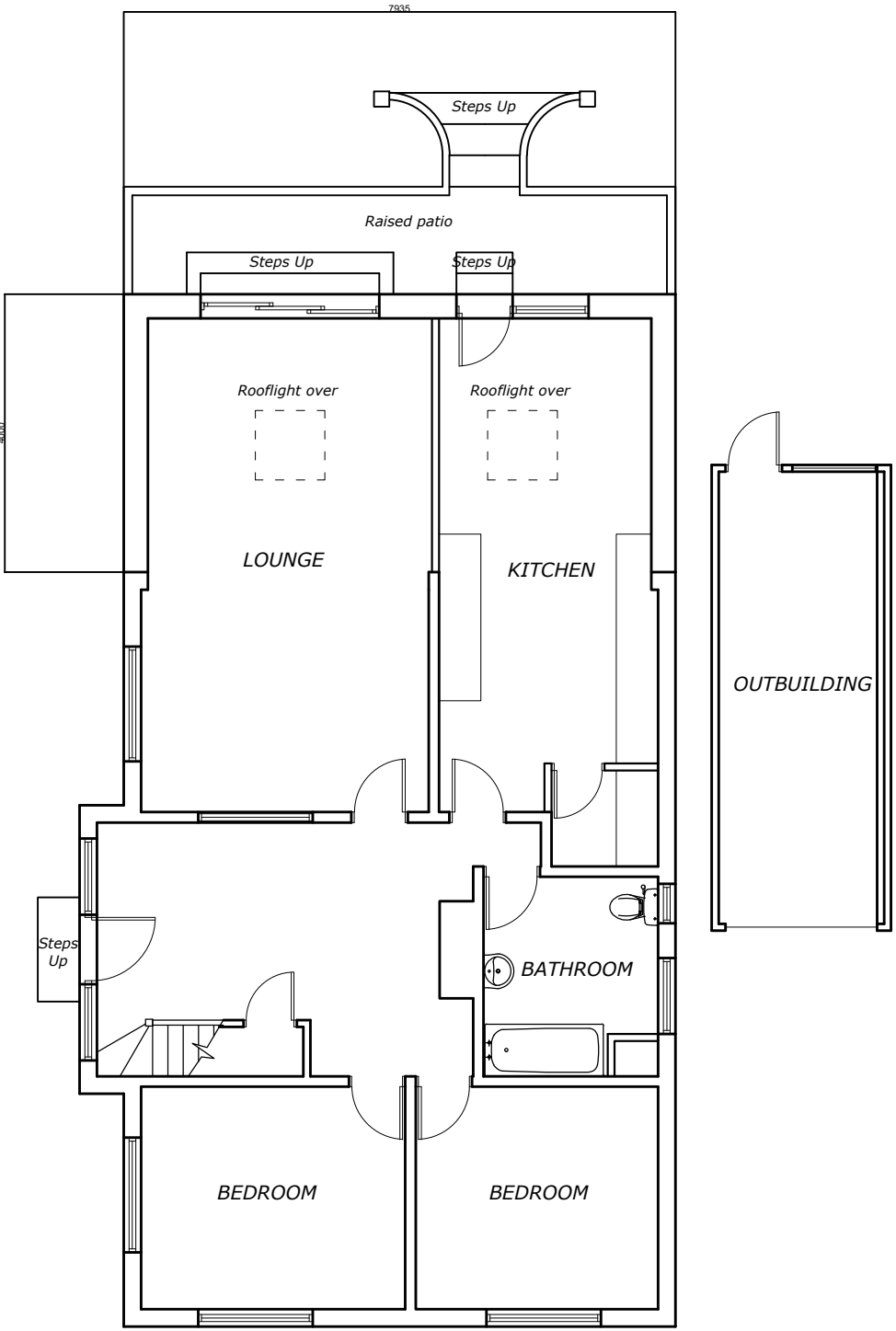
SIDE

Existing outbuilding shown dotted for clarity

Raised patio level

Steps up to raised patio level

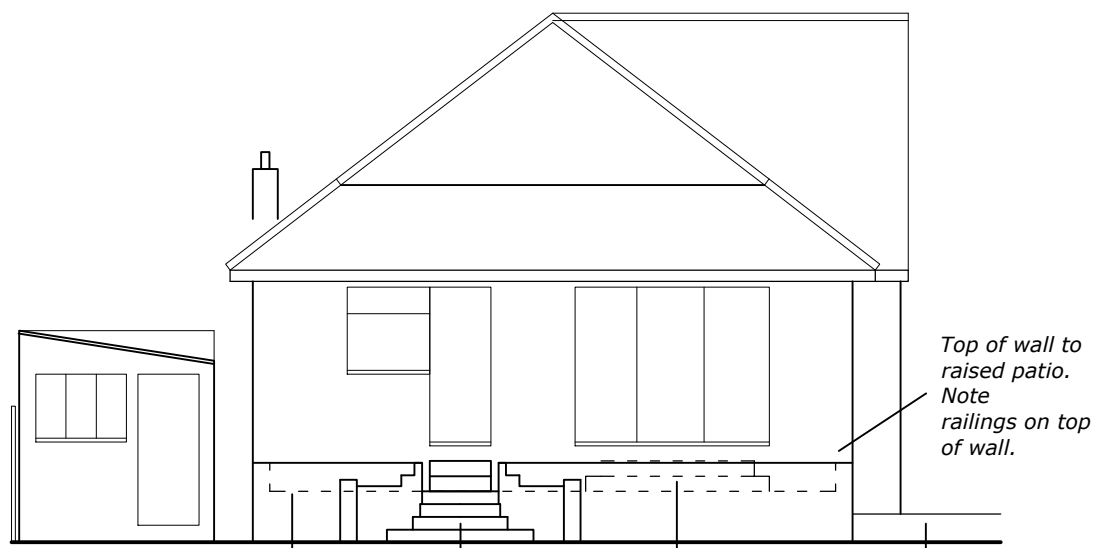
Existing Plan and Elevations



SIDE

Steps up to raised patio level

Raised patio level



REAR

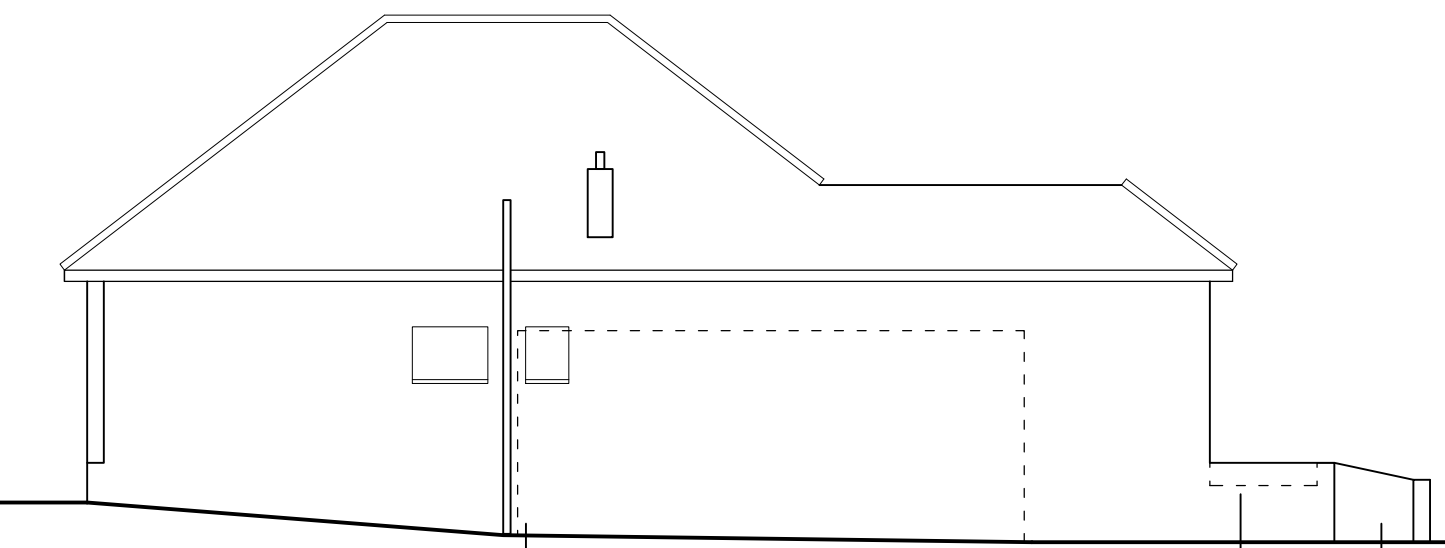
Raised patio level

Steps up to raised patio level

Steps up from raised patio level into house

Rising ground levels

Top of wall to raised patio. Note railings on top of wall.



SIDE

Existing outbuilding shown dotted for clarity

Raised patio level

Proposed Plan and Elevations

Existing & Proposed Plans and Elevations

0 5m 10m

No.5 St. Edmunds Avenue, Ruislip

**W J Macleod**  
ARCHITECT  
70b High Street Northwood Middlesex HA6 1BL  
phone 01923 840600

Drawing Number	24 / 3556 / 2	Revision	A
Date	6 / 6 / 24		
Scale	1:100@A1		