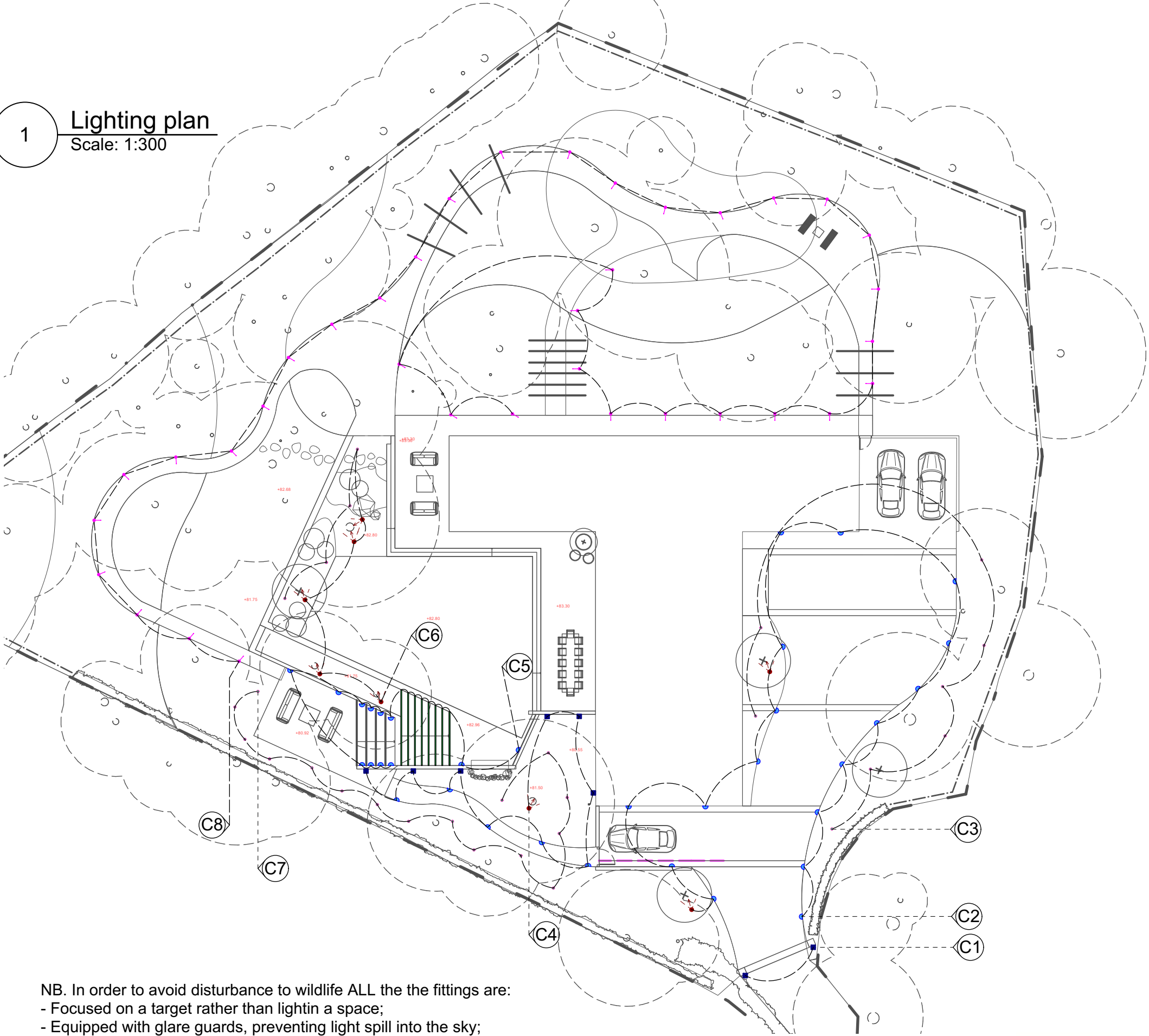


1

Lighting plan
Scale: 1:300



NB. In order to avoid disturbance to wildlife ALL the the fittings are:

- Focused on a target rather than lightin a space;
- Equipped with glare guards, preventing light spill into the sky;
- Equipped with sensors and timers to prevent lights being on when not in use;
- Using warm white colour as it's more natural.



LDF8322: Collingwood LED strip light

Lighting plan key & circuits description

C1 Circuit one
Pier lights

MONO II 2no. Delta Mono II LED 930 wall light, wall surface light, lomen output 610lm, 8W, grey aluminium, w/white

C2 Circuit two
Entry lights

LOGIC F1 17no. Delta LED Logic path marker light, ground mounted, lumen output 3lm, grey aluminium, w/white

LGC1063 2no. Collingwood LED spike spot, spotlight 2.2w, lumen output 290lm, s/steel, w/white

C3 Circuit three
Path light

LGC1011 7no. Collingwood mini spike spotlight, ground spike, 1W, lumen output 75lm, s/steel, w/white

C4 Circuit four
Tree lights

MONO II 6no. Delta Mono II LED 930 wall light, wall surface light, lomen output 610lm, 8W, grey aluminium, w/white

LGC1063 1no. Collingwood LED spike spot, spotlight 2.2w, lumen output 290lm, s/steel, w/white

LOGIC F1 5no. Delta LED Logic path marker light, ground mounted, lumen output 3lm, grey aluminium, w/white

C5 Circuit five
Step lights

LOGIC F1 12no. Delta LED Logic path marker light, ground mounted, lumen output 3lm, grey aluminium, w/white

LSC82 33lm. Collingwood LED strip light, step light, 4.8W, lumen output 380lm, plastic on aluminuim frame, w/white

C6 Circuit six
Step lights

LGC1063 5no. Collingwood LED spike spot, spotlight 2.2w, lumen output 290lm, s/steel, w/white

LGC1011 4no. Collingwood mini spike spotlight, ground spike, 1W, lumen output 75lm, s/steel, w/white

C6 Circuit six
Step lights

LGC1011 16no. Collingwood mini spike spotlight, ground spike, 1W, lumen output 75lm, s/steel, w/white

C6 Circuit six
Step lights

LGC1011 36no. Collingwood mini spike spotlight, ground spike, 1W, lumen output 75lm, s/steel, w/white



LGC1011: Collingwood LED mini spike Spotlights - s/steel



MONO II :Delta Mono II LED 930 wall light



LGC1063 : Collingwood LED spike spot - 2.2W s/steel



LOGIC F1: Delta LED Logic 2W Path marker - Alluminium



ROSEBANK

Studio G23, The Light Box, 111 Power Road,
Chiswick W4 5PY
+44 (0)203 876 5299
info@rosebanklandscaping.co.uk

Project	Nicholas way
Client	Maroo
Drg title	Lighting plan
Drg No.	
Scale	1:300@A3
Status	Issue Date 26/05/2023
Drawn	ML Checked

Unless otherwise specified all DIMs in mm. All DIMs must be checked on site.
Do not scale from this drawing