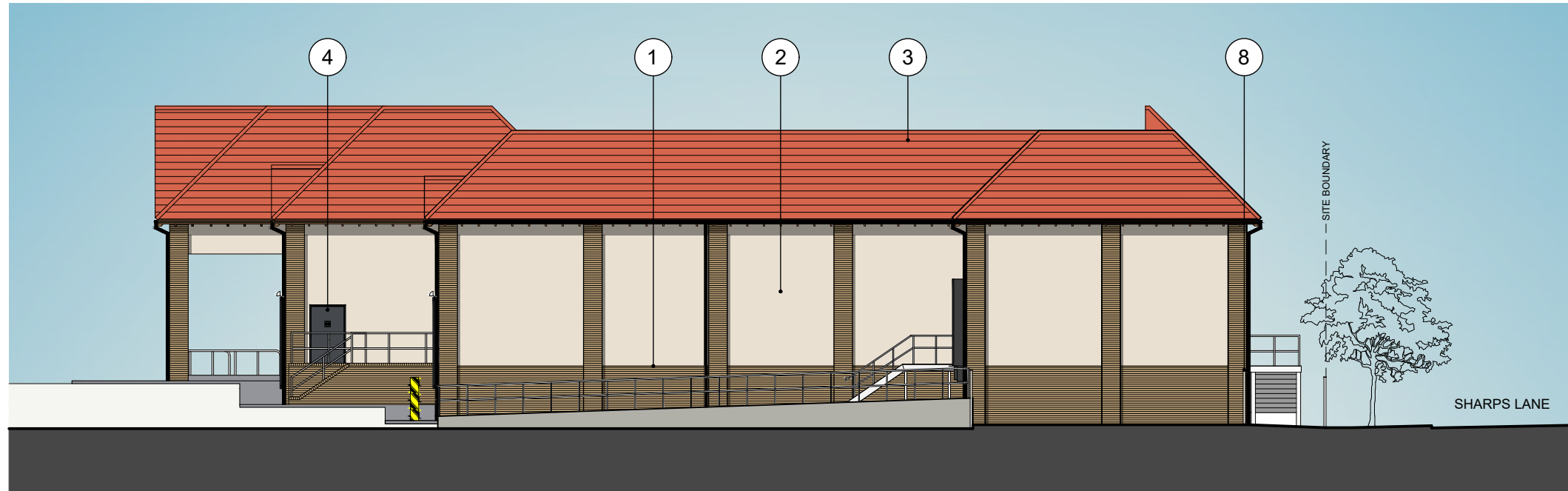
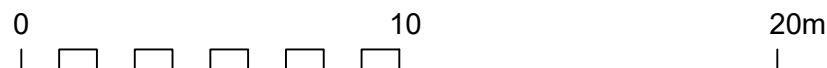


Rev	Date	Reference	Drawn / Chk'd
P01	2025/01/10	P01 FIRST ISSUE.	AA AA



Materials - Key to Codes

1	External Walls Red facing brickwork.
2	External Walls Painted render finish. Colour: Ivory.
3	Roof Covering Red clay plain roof tiles.
4	External Doors Steel doors and frames, powder coated internally and externally. Colour: Graphite Grey, RAL 7024 to 30% gloss finish.
5	Sectional Door Delivery area insulated sectional door; 2600mm (W) x 2600mm (H). External colour: Graphite Grey, RAL 7024.
6	Dock Shelter Model DSL, 3250mm x 3250mm x 500mm projection and 900mm head curtain, with galvanised steel collapsible linkarm frame. Front curtains polyester mono-filament 3mm PVC coated to both sides. Colour: Black, with safety marker stripes.
7	Shopfront Glazing and Entrance Lobby Structural aluminium glazing sections by Schueco. All glazing panels to be double-glazed, 8.8 / 16 / min 8mm glass unit. Laminated inner pane. Voids argon filled. Toughened outer pane with Sunguard SNT0/SSHT on surface 2. Entrance pod, automatic doors, shopfront glazing and window profiles powder coated Graphite Grey, RAL 7024 on both faces, gloss finish.
8	Fencing Close-boarded timber gate and fence. 2m height.



Client

Lidl Great Britain Ltd

Project

Lidl
Ickenham Road, Ruislip

Title

North Elevation as Proposed

Drawing Ref.

4478-0406

Revision

P01

Scale - unless otherwise stated

1:200

Status

@ A3

S0

Issued For

Preliminary



KLH architects

The Old Steelyard, Poplar Lane
Sproughton, Ipswich, IP8 3HL
t.01473 689532
klh@klharchitects.com
www.klharchitects.com