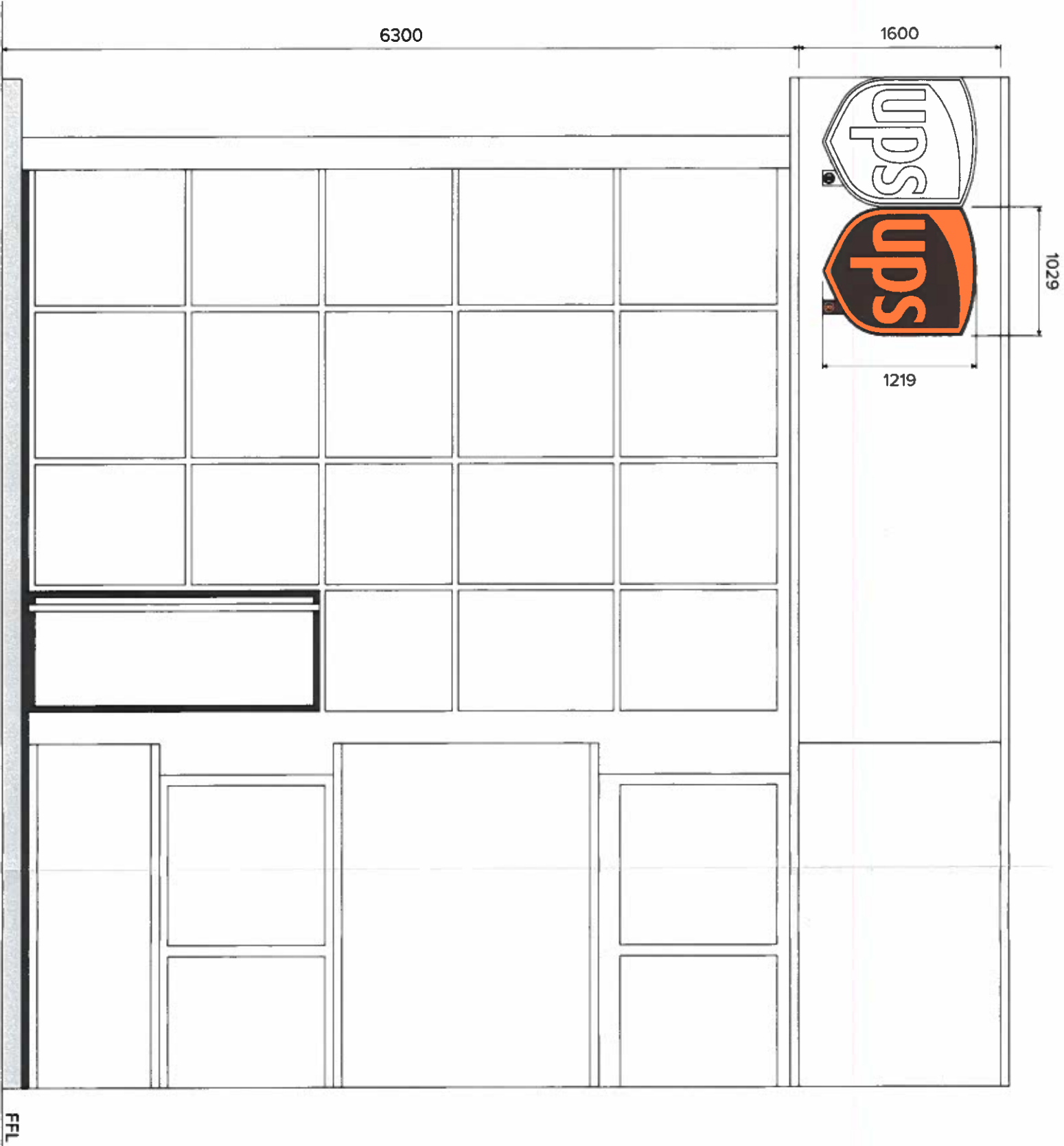


ITEM:
EX1 Shield Sign

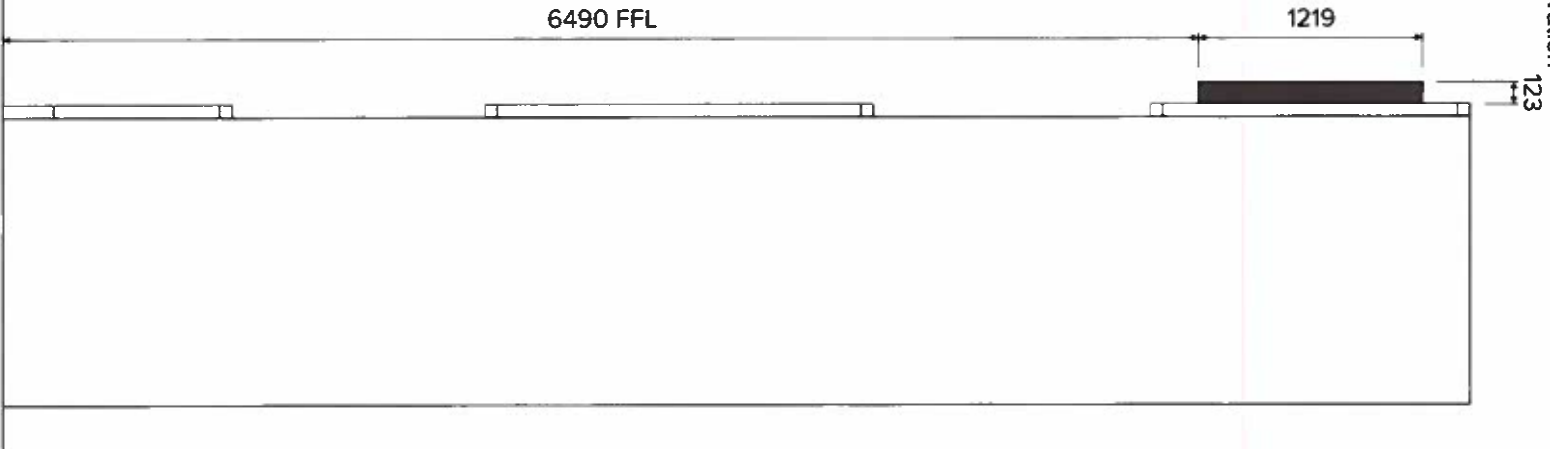
East Elevation

@1:40



North Elevation

@1:40



- UPS BROWN**
Pantone: 476c
CMYK: 32/70/100/83
RAL: 8014 satin
- UPS YELLOW**
Pantone: 7548c
CMYK: 0/27/100/0
Vinyl: Hexis E3123B matt
- WHITE**
CMYK: 0/0/0/0
RAL: 9016 satin
Acrylic: GreenCast 74073
Vinyl: IP 5701 gloss opaque



PEARCE
SIGNS

DWG	DATE	BY
014741-R00	28.09.23	SR

ACTIONS
N/A

PROJECT
UPS UK Ltd.
UPS - West Drayton, GBR
Brand Book / Engineering - External Signage

NOTES
N/A

THIS DRAWING / DESIGN IS THE PROPERTY OF
PEARCE SIGNS LTD.

ALL DIMENSIONS ARE IN MILLIMETRES (MM) AND
ALL DIMENSIONS ARE TO BE TAKEN TO THE CENTRE
UNLESS OTHERWISE SPECIFIED. ALL
WRITTEN SIZES ARE SHOWN AS WIDTH x HEIGHT x
DEPTH (WxHxD) AND ARE SCALED @A3

ALL COLOURS ON SCREEN OR PRINTED ARE
INDICATIVE AND MAY NOT BE AN EXACT MATCH OF
THE FINAL PRODUCT COLOUR.

ALL CONSTRUCTION RELATED PRODUCTS ARE TO
QUALITY REQUIREMENT EN ISO 9001:2015 AND ISO
9001:2015. ALL FILED WELDS SHALL BE A
MINIMUM LEG LENGTH OF 5MM UNLESS
OTHERWISE SPECIFIED BY A WELDING SYMBOL IN
ACCORDANCE WITH EN 22553.