



PROJECT:

UPS UK Ltd. - West Drayton, GBR

Brand Book / Engineering - External Signage

SITE ADDRESS:

UPS Stockley Close (L&D SPL-UK)

363 Stockley Close

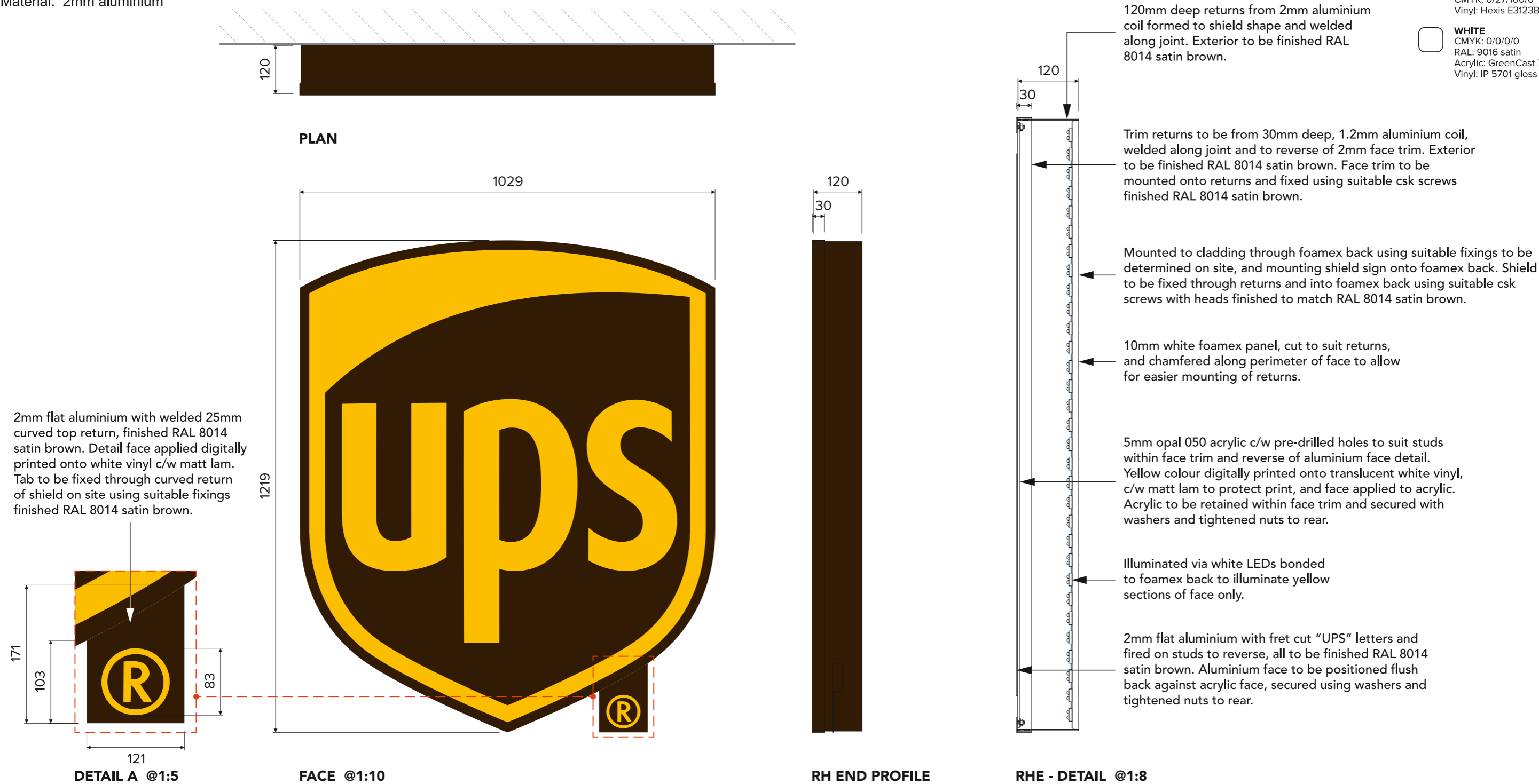
West Drayton

UB7 9BL

ITEM:
EX1 Shield Sign

Qty: 1
Material: 2mm aluminium

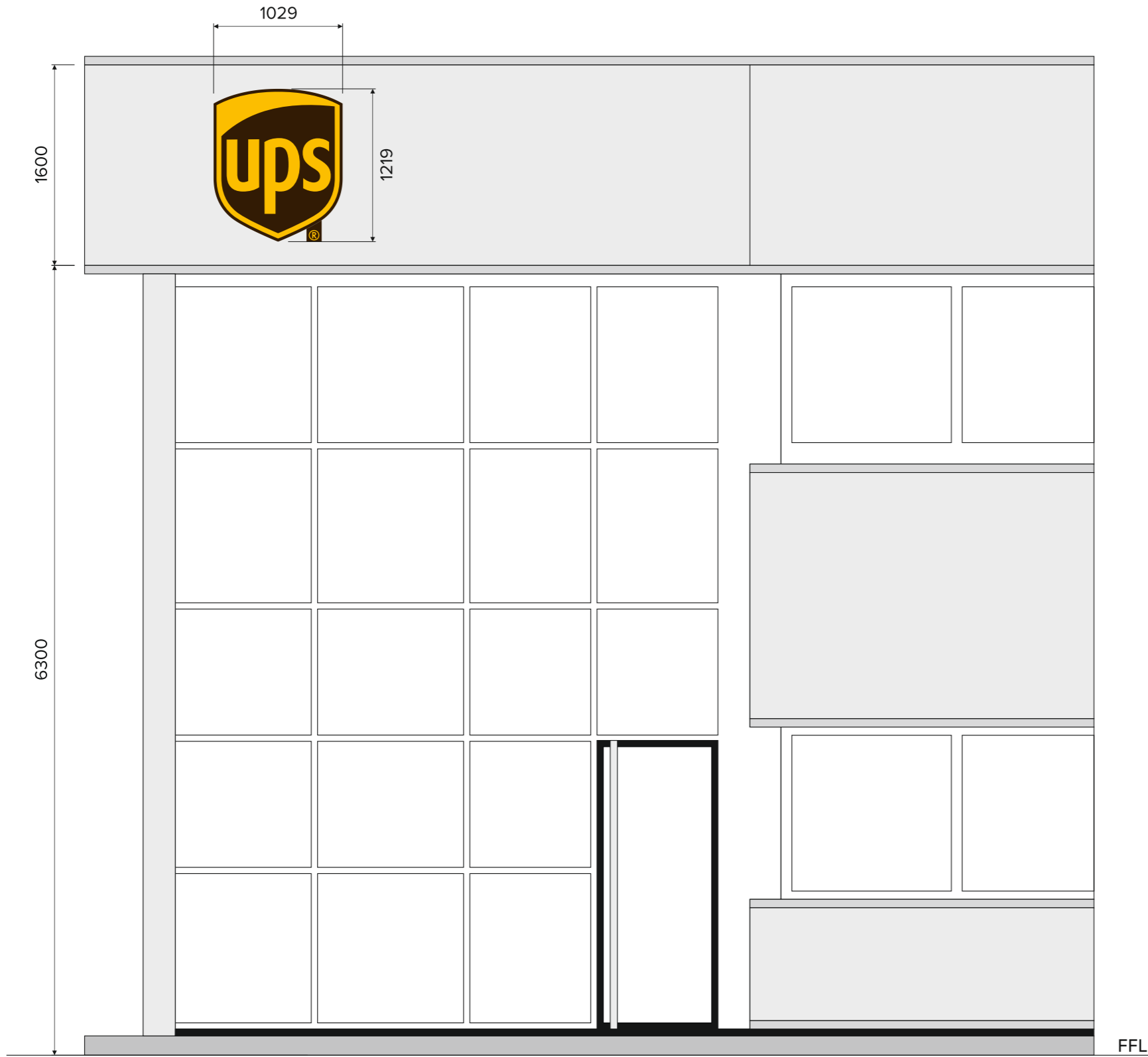
- UPS BROWN**
Pantone: 476c
CMYK: 32/70/100/83
RAL: 8014 satin
- UPS YELLOW**
Pantone: 7548c
CMYK: 0/27/100/0
Vinyl: Hexis E3123B matt
- WHITE**
CMYK: 0/0/0/0
RAL: 9016 satin
Acrylic: GreenCast 74073
Vinyl: IP 5701 gloss opaque



ITEM:
EX1 Shield Sign

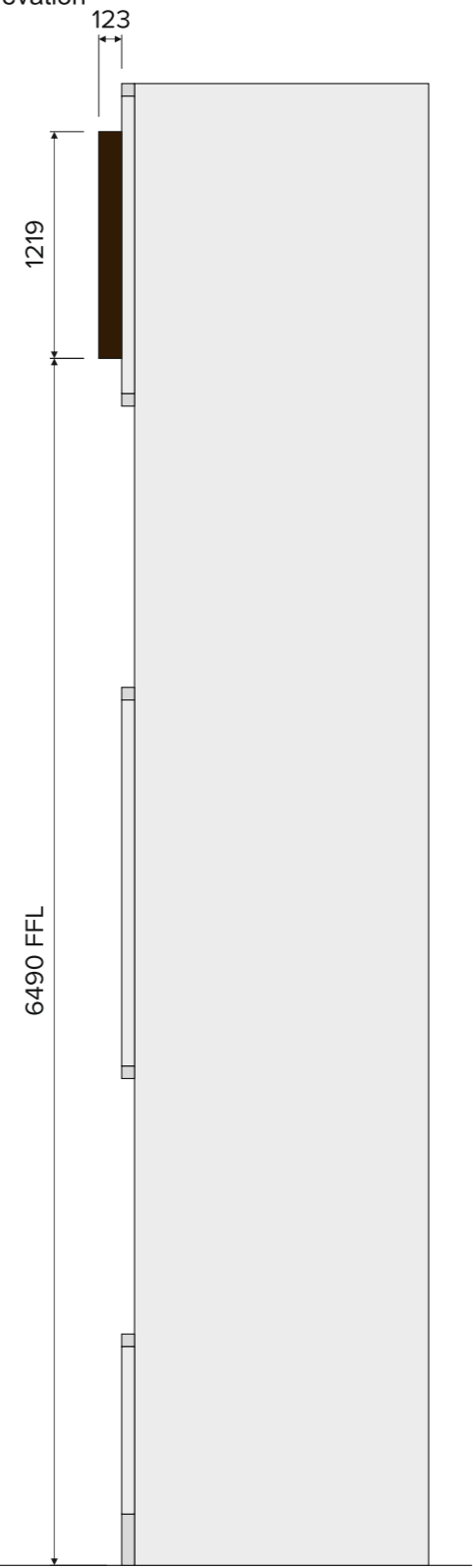
West Elevation

@1:40



North Elevation

@1:40



- UPS BROWN**
Pantone: 476c
CMYK: 32/70/100/83
RAL: 8014 satin
- UPS YELLOW**
Pantone: 7548c
CMYK: 0/27/100/0
Vinyl: Hexis E3123B matt
- WHITE**
CMYK: 0/0/0/0
RAL: 9016 satin
Acrylic: GreenCast 74073
Vinyl: IP 5701 gloss opaque



DWG	DATE	BY
014741-R01	13.12.23	SR
PROJECT UPS UK Ltd. UPS - West Drayton, GBR Brand Book / Engineering - External Signage		

ACTIONS
N/A

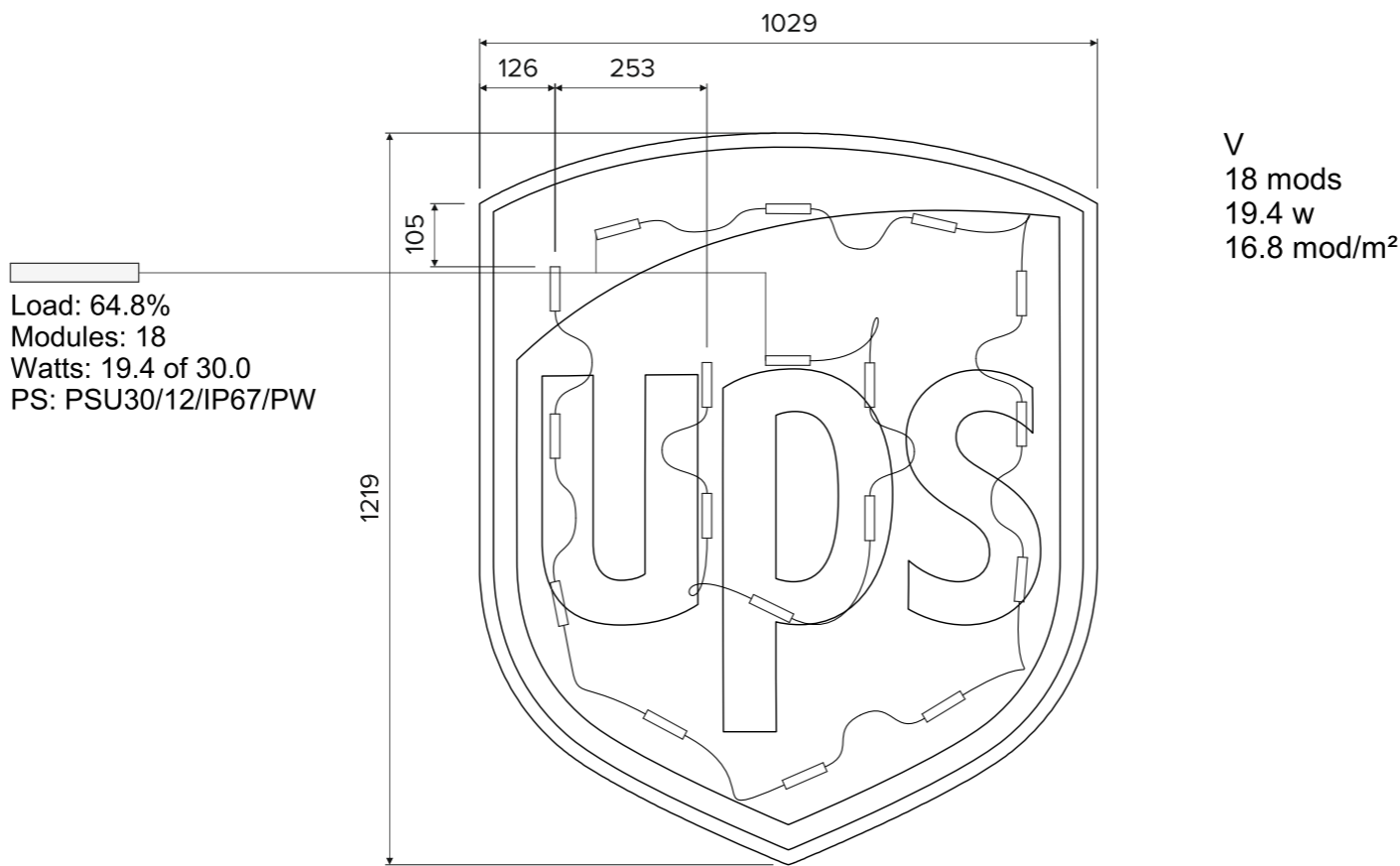
NOTES
N/A

© THIS DRAWING / DESIGN IS THE PROPERTY OF PEARCE SIGNS LTD.

ALL DIMENSIONS ARE IN MILLIMETRES (mm) AND WITHIN ± 3mm UNLESS OTHERWISE SPECIFIED. ALL WRITTEN SIZES ARE SHOWN AS WIDTH x HEIGHT x DEPTH (WxHxD) AND ARE SCALED @A3.

ALL COLOURS (ON SCREEN OR PRINTED) ARE INDICATIVE AND MAY NOT BE AN EXACT MATCH OF THE FINAL PRODUCT COLOUR.

ALL CONSTRUCTION RELATED PRODUCTS ARE TO QUALITY REQUIREMENT EN 1090 EXC 2 AND ISO 5817 LEVEL C. ALL FILLET WELDS WILL BE A MINIMUM LEG LENGTH OF 5MM UNLESS OTHERWISE SPECIFIED BY A WELDING SYMBOL IN ACCORDANCE WITH EN 22553.



18 Modules: Oshino - Nova 3 module 6500K 12V - Nova3
18 Total Modules
19.4 Watts
1 Power Supply: Oshino - PSU30/12/IP67/PW
1.074 m²
3.815 perim m

FACE @1:12.5

DWG	DATE	BY	ACTIONS	
014741-R01	13.12.23	SR	N/A	
PROJECT UPS UK Ltd. UPS - West Drayton, GBR Brand Book / Engineering - External Signage			NOTES N/A	

© THIS DRAWING / DESIGN IS THE PROPERTY OF PEARCE SIGNS LTD.

ALL DIMENSIONS ARE IN MILLIMETRES (mm) AND WITHIN ± 3mm UNLESS OTHERWISE SPECIFIED. ALL WRITTEN SIZES ARE SHOWN AS WIDTH x HEIGHT x DEPTH (WxHxD) AND ARE SCALED @A3.

ALL COLOURS (ON SCREEN OR PRINTED) ARE INDICATIVE AND MAY NOT BE AN EXACT MATCH OF THE FINAL PRODUCT COLOUR.

ALL CONSTRUCTION RELATED PRODUCTS ARE TO QUALITY REQUIREMENT EN 1090 EXC 2 AND ISO 5817 LEVEL C. ALL FILLET WELDS WILL BE A MINIMUM LEG LENGTH OF 5MM UNLESS OTHERWISE SPECIFIED BY A WELDING SYMBOL IN ACCORDANCE WITH EN 22553.