

Discharge of Condition 6 – Materials and External Surfaces

Planning Reference: 61059/APP/2022/3392

Site Address: 72 Sweetcroft Lane, Hillingdon

In accordance with the requirements of **Condition 6**, details of all **materials and external surfaces** are hereby submitted for approval. The submitted information includes **make, product/type, colour, and photographic/image references** for all externally visible materials. The development shall be constructed strictly in accordance with the approved details and the approved materials shall be retained thereafter, unless otherwise agreed in writing by the Local Planning Authority. **The proposed materials are considered appropriate in appearance, colour, and texture and will preserve the character and appearance of the surrounding area.**

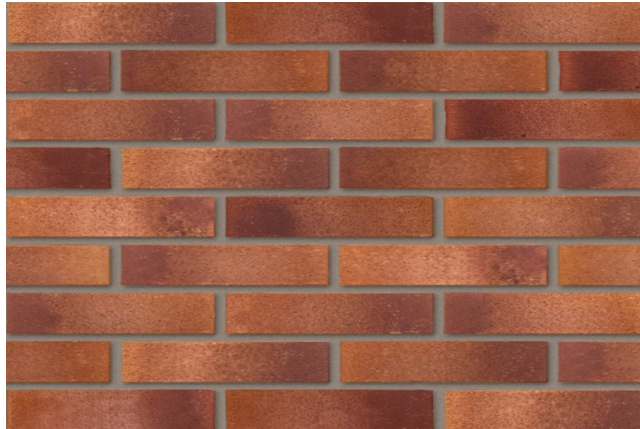
Materials Schedule – External Finishes

Element	Material / Product	Colour / Finish
Roof covering	Marley plain concrete roof tiles	Smooth grey
External walls	Wienerberger Mulberry Red facing brick (65mm)	Red / multi
Window cills	Bath stone	Cream / light buff
Window heads	Bath stone	Cream / light buff
Quoins	Bath stone	Cream / light buff
String course	Bath stone	Cream / light buff
Portico	Bath stone	Cream / light buff
Windows	uPVC windows	Anthracite grey (RAL 7016 or similar)
Rear garden patio	Porcelain paving tiles	Grey
Front drive	Tegula concrete block pavements (permeable)	Grey

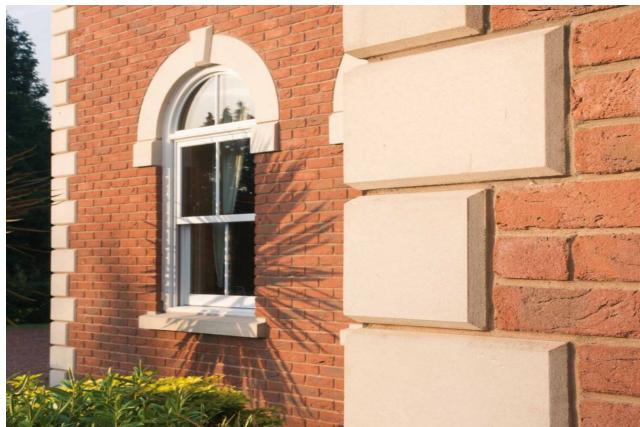
Photographic / Image References (for identification only)



Roof covering: Marley plain concrete roof tiles, smooth grey



External walls: Wienerberger Mulberry Red facing brick, 65mm



Architectural detailing: Bath stone window surrounds, quins, string course and portico



Windows: uPVC windows with anthracite grey external finish



Rear garden patio: Grey porcelain paving tiles



Front drive: Grey tegula block paviours (permeable construction)