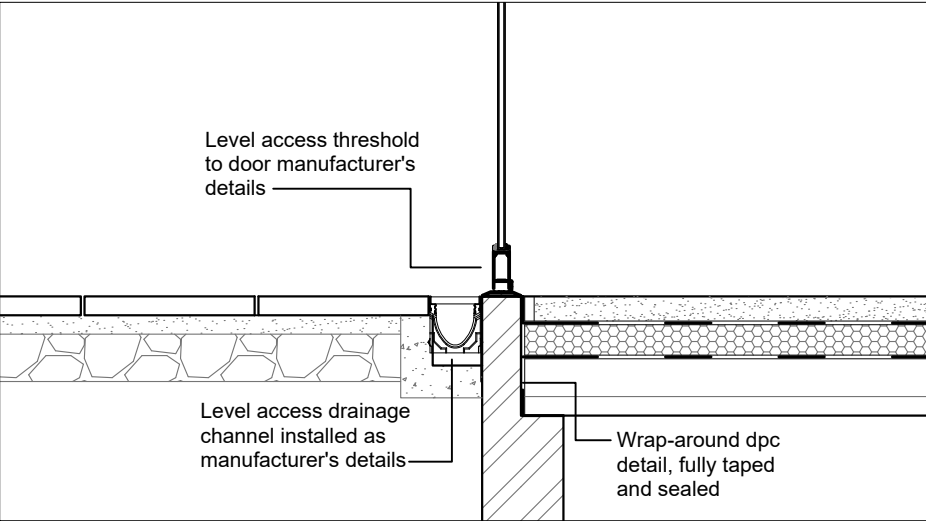
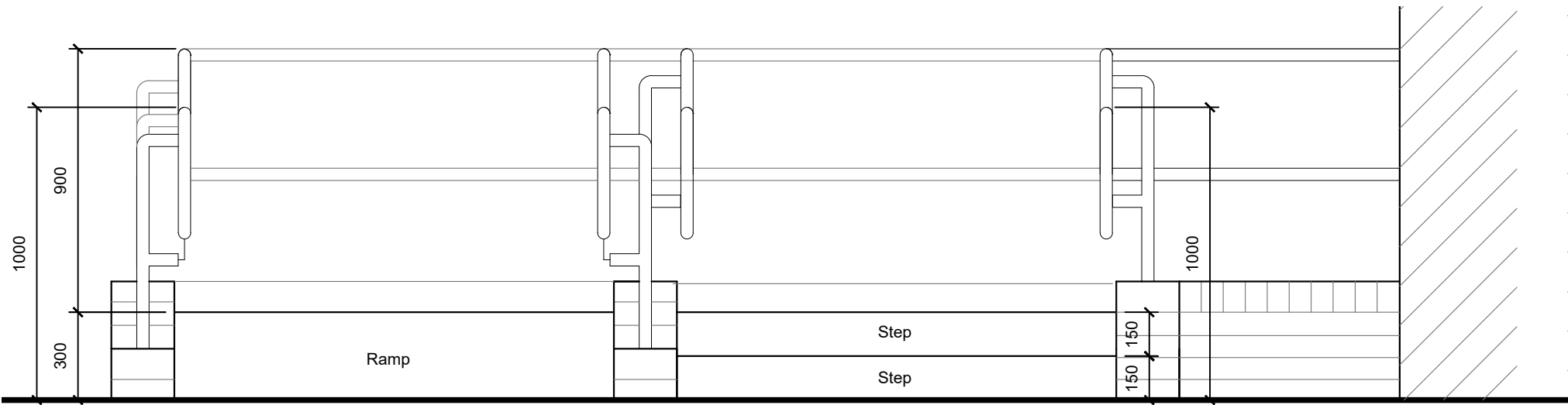


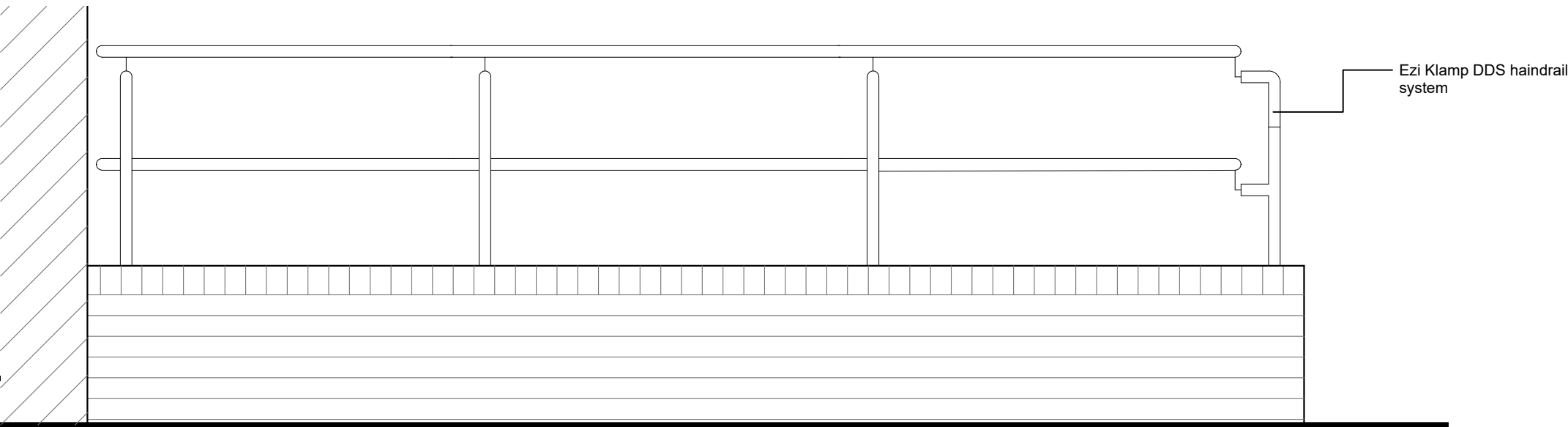
EXTERNAL ACCESS RAMP (SIDE ELEVATION)



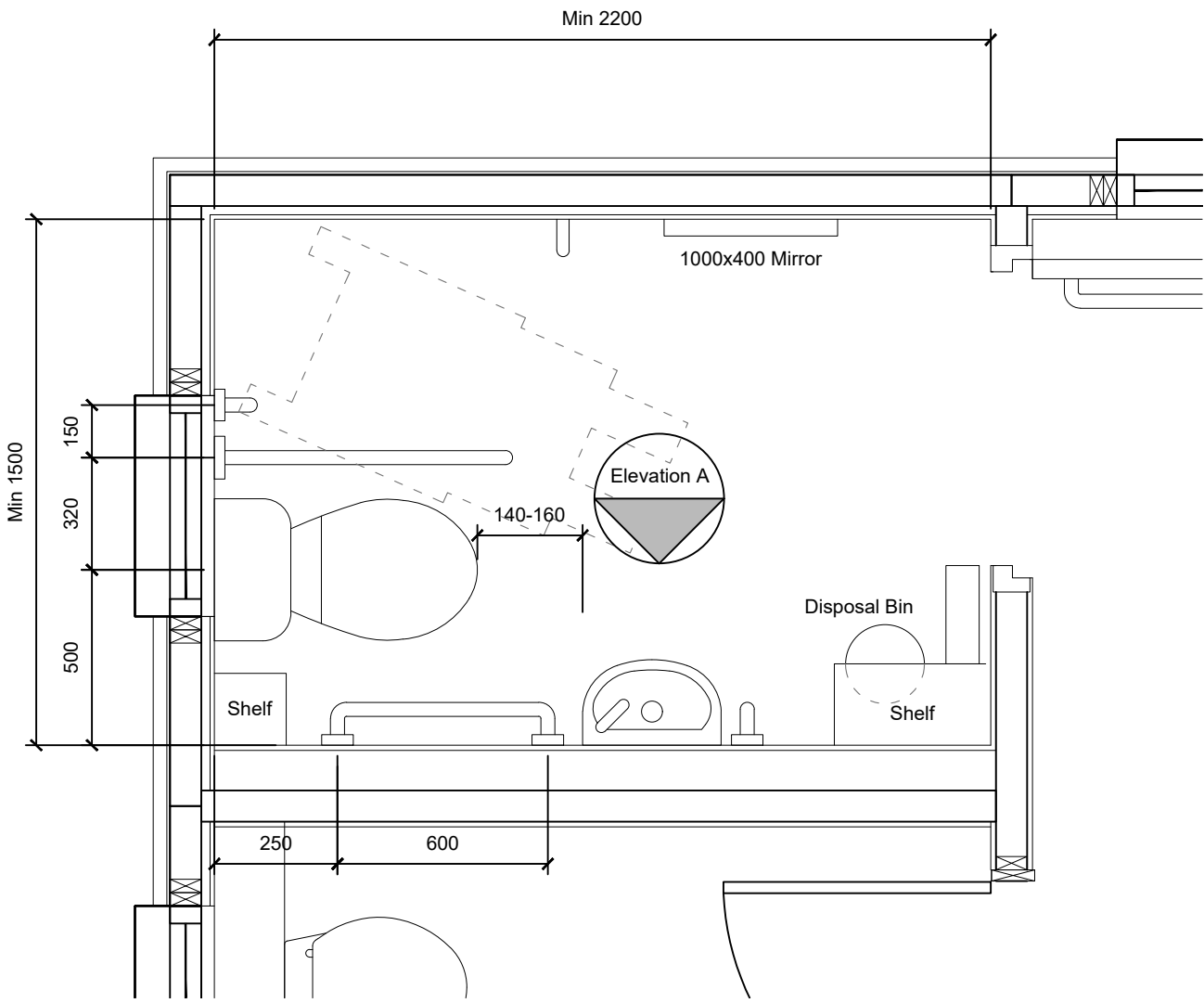
LEVEL ACCESS DOOR
DETAIL



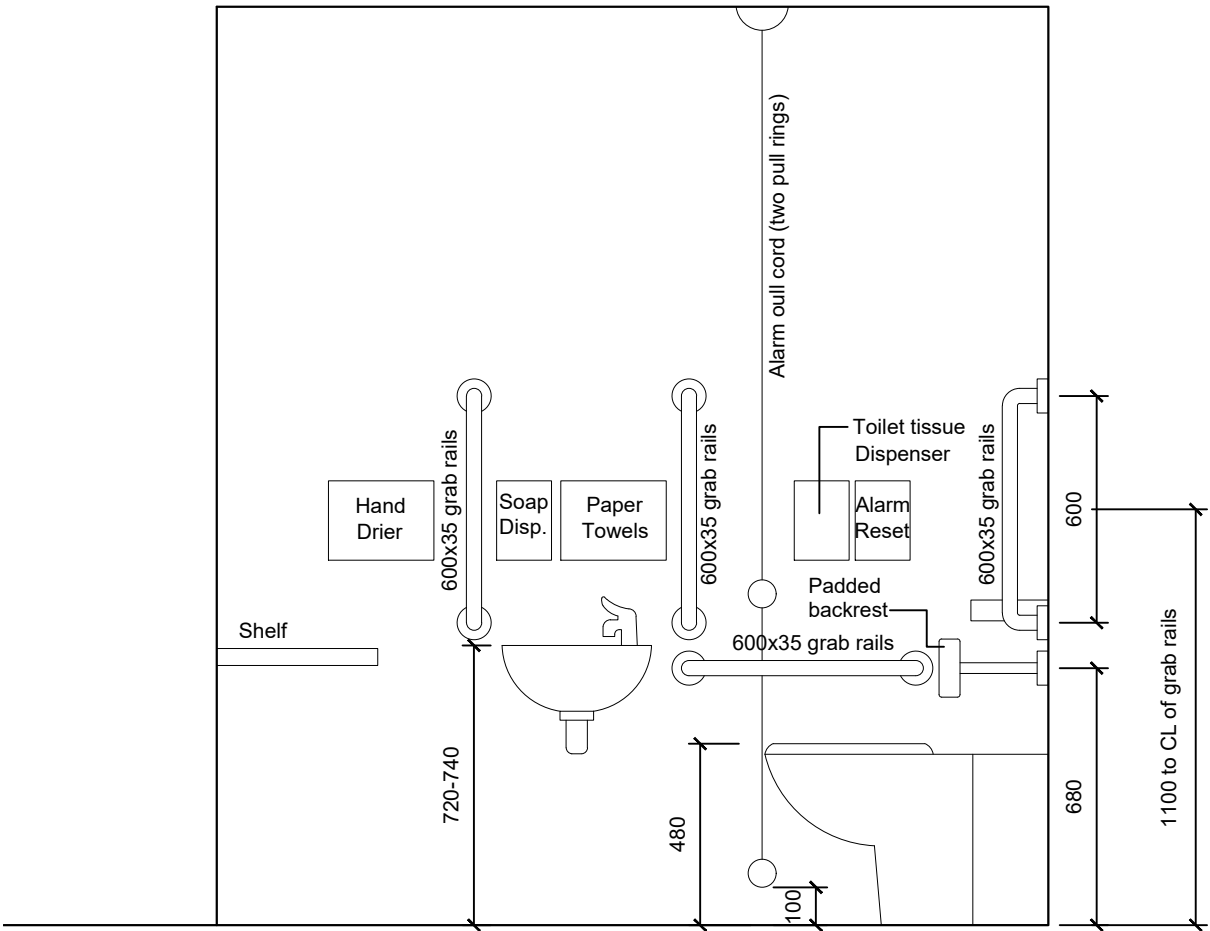
EXTERNAL ACCESS RAMP AND STAIRS (FRONT ELEVATION)



EXTERNAL ACCESS RAMP (REAR ELEVATION)



WHEELCHAIR ACCESSIBLE WC



ELEVATION A

WHEELCHAIR ACCESSIBLE WC

Doc M installation pack to manufacturer's details, complete with the following:

1. WC Pan to BS EN 997:2012 with lever/paddle flush to cistern to rhs of cistern
2. Basin with lever mixer tap with terminal fittings complying with Guidance Note G18.5 of the Guidance Document relating to Schedule 2 for Water Fittings, of the Water Supply (Water Fittings) Regulations 1999, SI 1999/ 1148
3. Grab rails as indicated, including rear of door
4. An emergency pull cord which isa easily identifiable and reachable from the WC and from the floor close to the WC
5. Emergency assistance alarm system having
 - i) Visual and audible indicators to confirm that and emergency has been received
 - ii) A reset control reachable from a wheelchair and the WC
 - iii) A signal that is distinguishable visuallyand audibly from any fire alarm system
6. Lighting controlled by PIR motion sensors

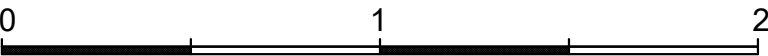
T R Harris Design & Surveying Services
559 Rayners lane, Pinner, Middlesex HA5 5HP
www.trharrisdesign.co.uk Tel: 020 868 5048

PROJECT

2nd & 9th Scout Group
18 St Catherines Road
RUISLIP
HA4 7RU

TITLE

ACCESSIBILITY



SCALE BAR 1:20

SCALE	1:20 @ A2	DRAWING NO.
DATE	October 2023	23/18SCR/03