

Materials - key to codes

- External Wall Render**
  - Low level plinth with fair face float finished waterproof mineral render in 2no. layers to 20mm thickness. Render to be painted to comply with BS 6150. Colour: Grey, RAL 7035.
  - High level with fair face float finished mineral render in 2no. layers to 20mm thickness. Render to be painted to comply with BS 6150. Colour: Gentian Blue, RAL 5010.
  - High level with fair face float finished mineral render in 2no. layers to 20mm thickness. Render to be painted to comply with BS 6150. Colour: Squirrel Grey, RAL 7000.
- External Wall Cladding**

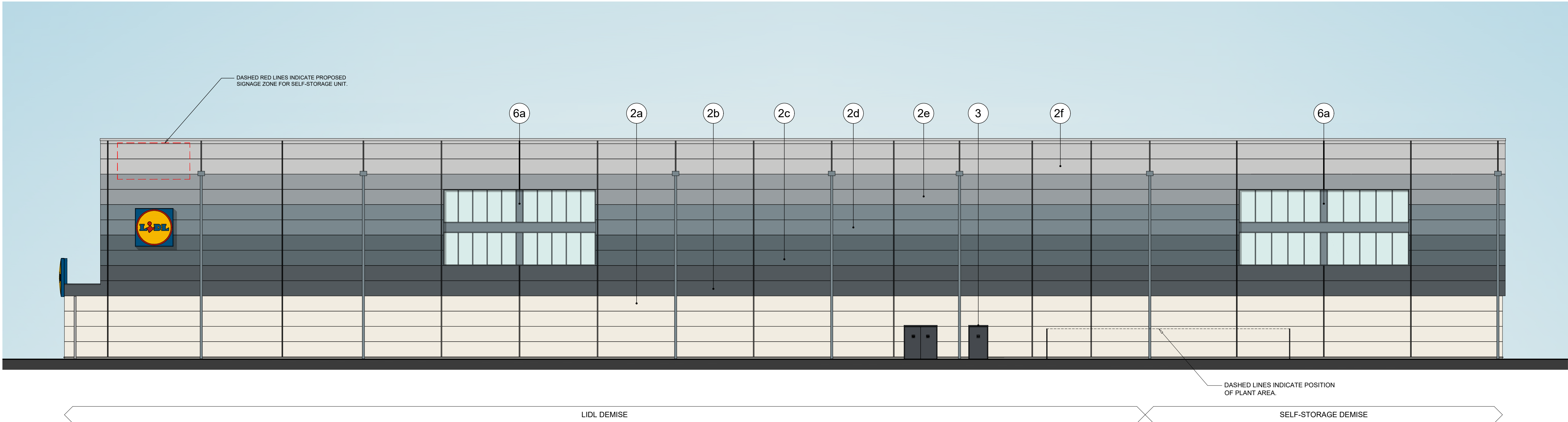
Metal rainscreen wall cladding to Lidl Specification.

  - Low level colour: White, RAL 9010.
  - Mid level 01 colour: Iron Grey, RAL 7011.
  - Mid level 02 colour: Blue Grey, RAL 7031.
  - Mid level 03 colour: Squirrel Grey, RAL 7000.
  - Mid level 04 colour: Window Grey, RAL 7040.
  - High level colour: Telegrey 4, RAL 7047.
- External doors**

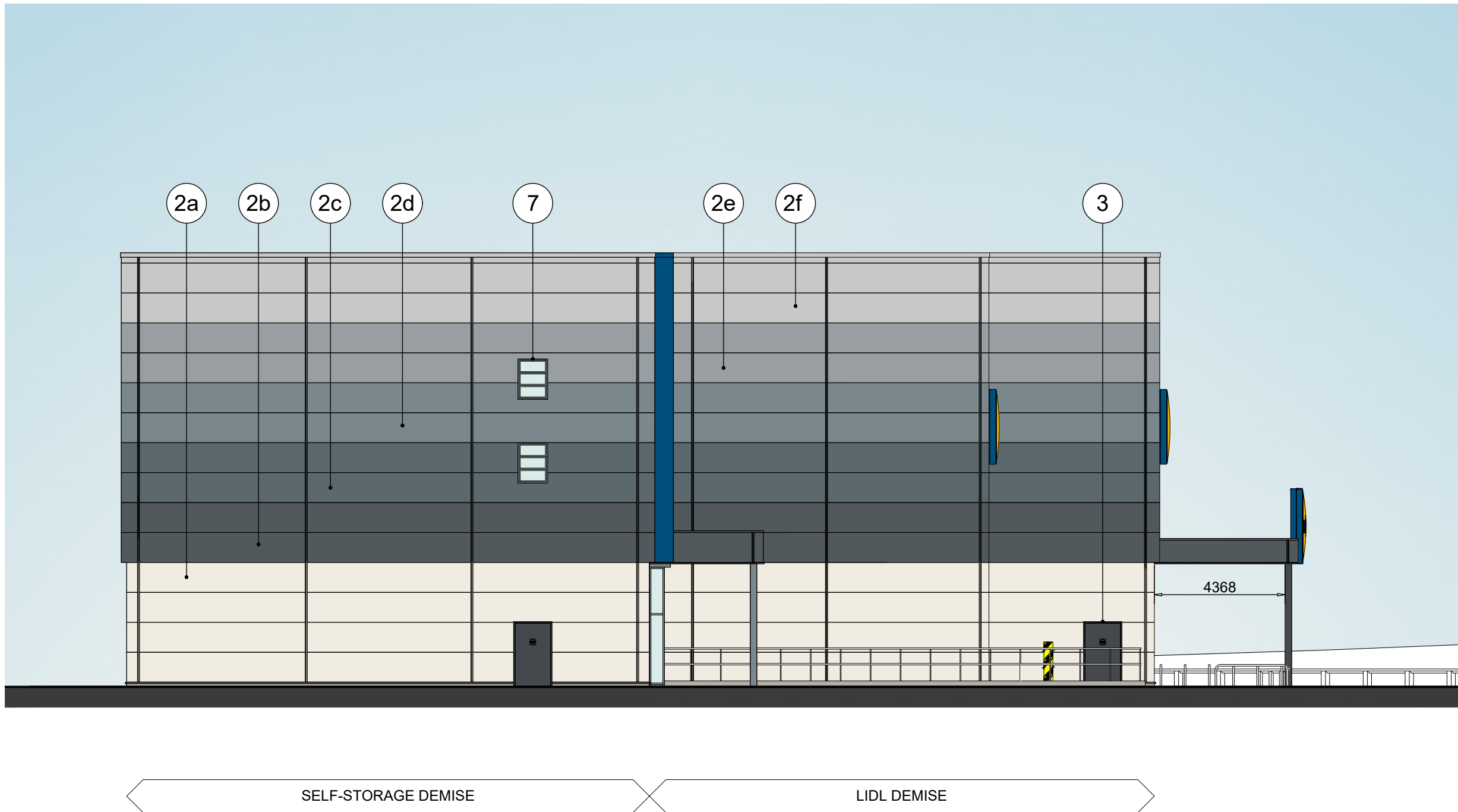
Steel doors and frames, powder coated internally and externally.  
External colour: Graphite Grey, RAL 7024 to 30% gloss finish.
- Sectional doors**
  - Delivery area insulated sectional door: 2600mm (W) x 2600mm (H).  
External colour: Graphite Grey, RAL 7024.
  - Delivery area insulated sectional door: 3800mm (W) x 4000mm (H).  
External colour: Gentian Blue, RAL 5010.
- Dock Shelter**

Model DSL, 3250mm x 3250mm x 500mm projection and 900mm head curtain, with galvanised steel collapsible linkarm frame. Front curtains polyester mono-flameant 3mm PVC coated to both sides. Colour: Black, with safety marker stripes.
- Shopfront Glazing and Entrance Lobby**
  - Structural aluminium glazing sections by Schueco. All glazing panels to be double-glazed, 8.8 / 16 / mm 8mm glass unit. Laminated inner pane. Voids argon filled. Toughened outer pane with Sunguard SN70/35HT on surface 2. Entrance pod, automatic doors, shopfront glazing and window profiles powder coated Graphite Grey, RAL 7024 on both faces, gloss finish.
  - Structural aluminium glazing sections by Schueco. All glazing panels to be double-glazed, 8.8 / 16 / mm 8mm glass unit. Laminated inner pane. Voids argon filled. Toughened outer pane with Sunguard SN70/35HT on surface 2. Entrance pod, automatic doors, shopfront glazing and window profiles powder coated Squirrel Grey, RAL 7000 on both faces, gloss finish.
- Glazed Louvre Windows**

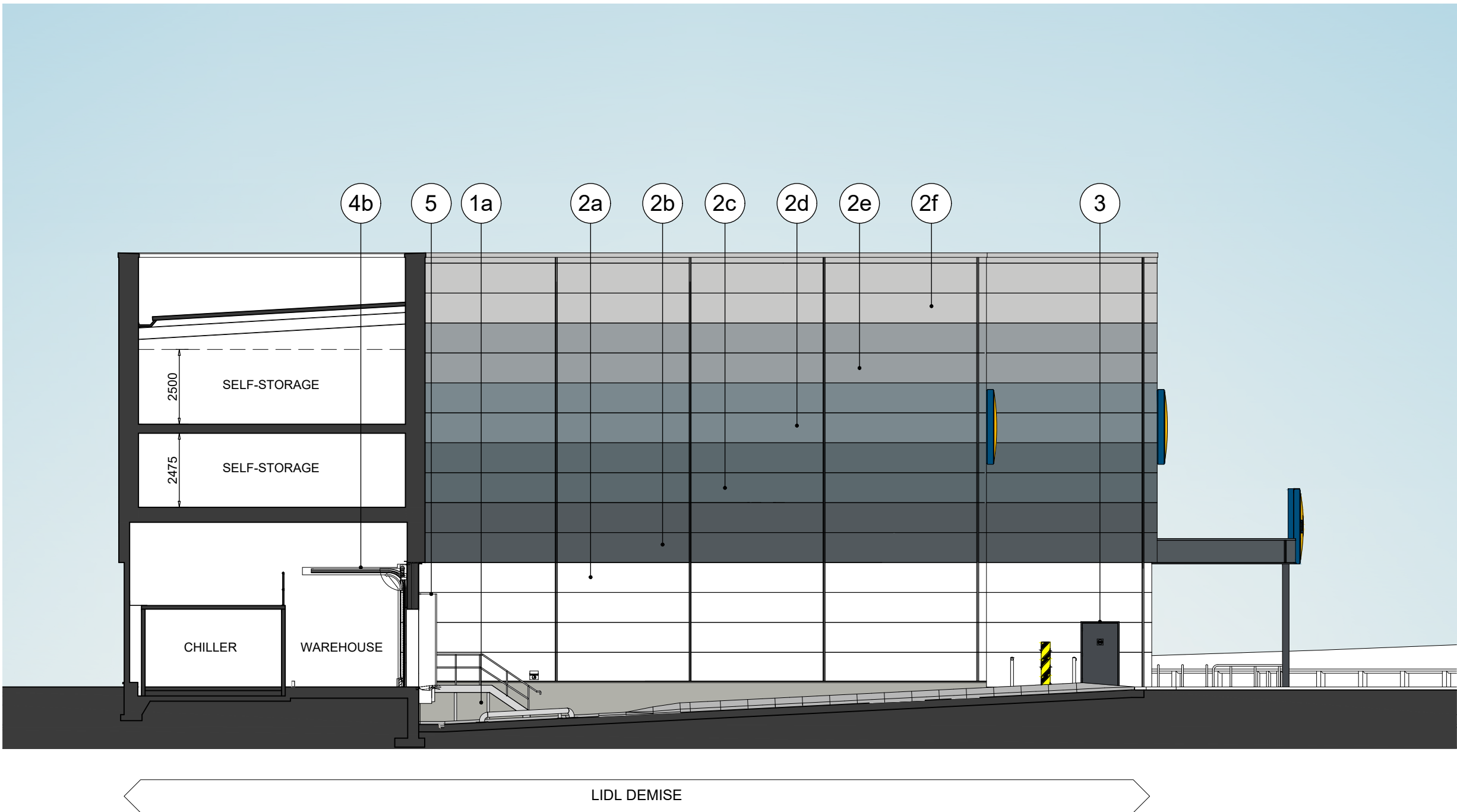
Aluminium glazing sections to EN 12101-2. Double-glazed manually operated opening louvre blades for use by the Fire Service. Each window to achieve minimum 1m² free opening area. Window profiles powder coated Squirrel Grey, RAL 7000 on both faces, gloss finish.



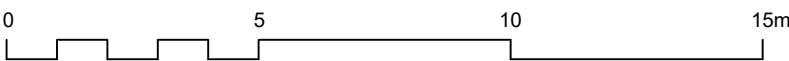
EAST ELEVATION



NORTH ELEVATION



DELIVERY BAY: NORTH SECTION - ELEVATION



Client  
Lidl Great Britain Ltd

Project  
Lidl  
Western Avenue, Hillingdon Circus

Title  
Elevations as Proposed - Option B  
Sheet 02 of 02

Drawing Ref.	Revision
5717-0403	P03
Scale - unless otherwise stated 1:150 @ A1	Status S0 Issued For Preliminary